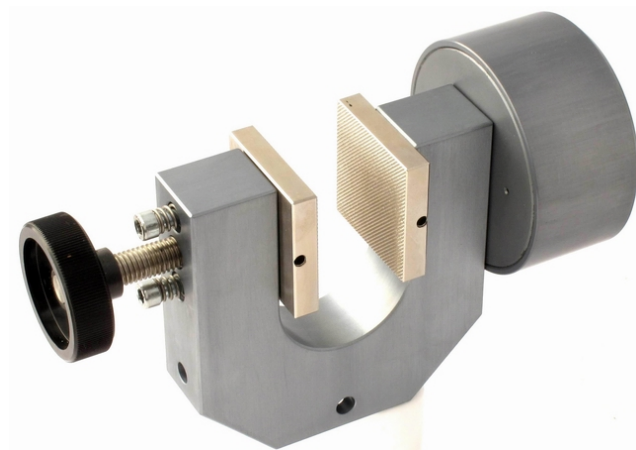


Pneumatic grip 3.5 kN

TH108 grips are supplied in pairs, but can also be ordered as a single grip (0.5 pair).

Grips and jaws need to be ordered separately.

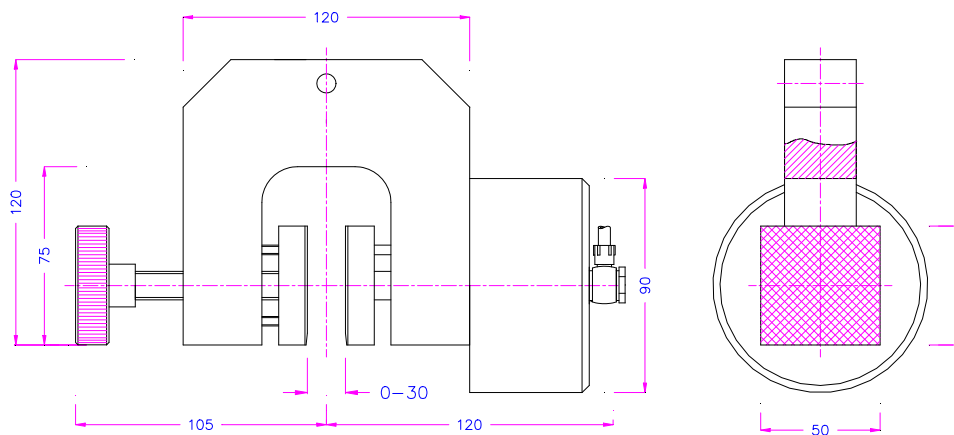


| Item No. | TH108 |
|----------------------|--|
| Clamping force | 3.5 kN/7 bar |
| Temperature range | 0 to + 70°C Other temperature ranges on request |
| Body | Aluminum, anodized |
| Pneumatic connection | 1/8" |
| Weight per grip | 1.3 kg each grip (without jaws) |
| Scope of delivery | 1 pair of grips (without jaws) |

Jaws for TH108 Scope of delivery 1 set = 4 jaws

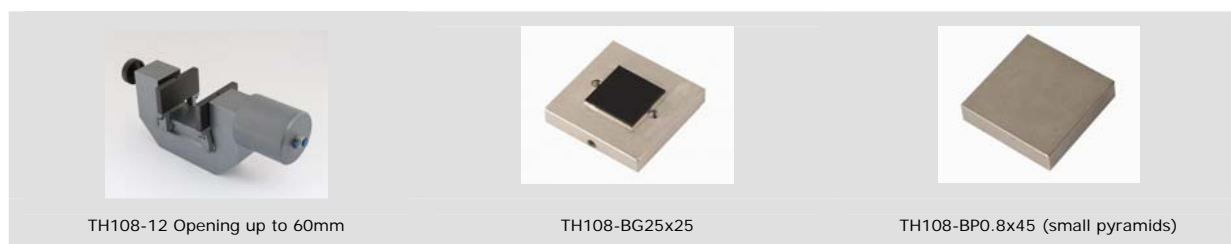
| Item No. | Jaw surface | Clamping surface H x W | Opening | Weight / pair |
|-------------|-------------------------|------------------------|-----------|---------------|
| TH108-B50 | Blank (smooth) jaws | 50x50mm | 0-34 mm | 0.38kg |
| TH108-BG50 | Rubber jaws | 50x50mm | 0-32 mm | 0.38kg |
| TH108-BV4 | V-jaws | Clamping height 50mm | 4-30 mm Ø | 0.45kg |
| TH108-BP50 | Pyramid (serrated) jaws | 50x50mm | 0-34 mm | 0.36kg |
| TH108-BW50 | Wave jaws | 50x50mm | 0-34 mm | 0.34kg |
| TH108-BD50 | Diamond jaws | 50x50mm | 0-34 mm | 0.38kg |
| TH108-B100 | Blank (smooth) jaws | 50x100mm | 0-34 mm | 0.76kg |
| TH108-BG100 | Rubber jaws | 50x100mm | 0-32 mm | 0.78kg |
| TH108-BP100 | Pyramid (serrated) jaws | 50x100mm | 0-34 mm | 0.72kg |
| TH108-BW100 | Wave jaws | 50x100mm | 0-34 mm | 0.69kg |
| TH108-BD100 | Diamond jaws | 50x100mm | 0-34 mm | 0.76kg |

Jaws with differing dimensions and surfaces available on request.



TH108

Other versions and customer-built solutions.

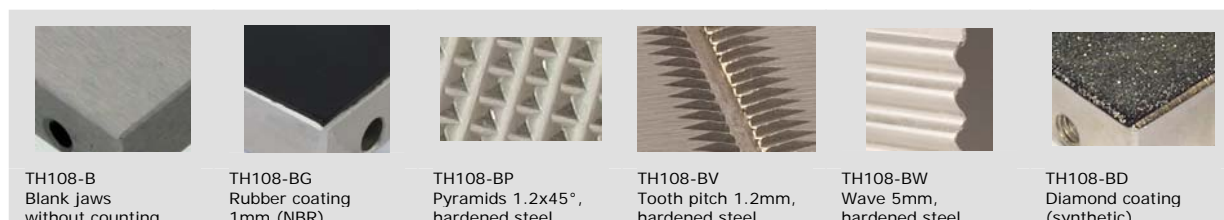


TH108-12 Opening up to 60mm

TH108-BG25x25

TH108-BP0.8x45 (small pyramids)

Jaws surfaces



TH108-B
Blank jaws
without counting

TH108-BG
Rubber coating
1mm (NBR)

TH108-BP
Pyramids 1.2x45°,
hardened steel

TH108-BV
Tooth pitch 1.2mm,
hardened steel

TH108-BW
Wave 5mm,
hardened steel

TH108-BD
Diamond coating
(synthetic)

Accessories:



TH205-1 Foot pedals

None locking: The jaws of the grip open by pressing the foot pedal and close after removing the foot from the pedal.

Scope of delivery: 1 pair of foot switches including tubes and fittings



TH205-2 Foot pedals

With locking function: The jaws of the grip open by pressing the foot pedal and remain opened after removing the foot from the pedal. The jaws close by pressing the pedal one more time.

Scope of delivery: 1 pair of foot switches including tubes and fittings



TH205-.+PR Pressure regulator

Optional for TH205-1 or TH205-2

To adjust air pressure: 1-10 bar



TH205-3 Hand switches

With locking function: The jaws of the grip close by pulling the handle and remain closed. The jaws open by pushing the handle back.

Scope of delivery: 1 unit of hand switches including tubes and fittings

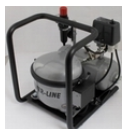


TH205-4 Hand switches

With locking function (see TH205-3)

The hand switches are directly mounted at the grips. 3/2 directional valve

Scope of supply: 2 hand switches including tubes and fittings



TH216 Compressor for laboratories, oil-lubricated

Max pressure 16 bar, 230V, noise level: 38dB(A)/1m

Displacement 5 l/min, tank size 3.1 litre (0.82 gallon)

Dimensions: 340x290x340 mm (L x W x H); weight 16 kg

Different voltages available on request