

[MASTER] C:\th\G16-ISO-EN-ASTM-DIN



TH113-2.jpg



TH121-2-Stauchdruckversuch-zusammen.TH16-4.jpg



TH290-30-Af60--.jpg



TH44-2---o-Ring.jpg



TH62.jpg



THS145-20-3.jpg



THS174-125-Durchzugsvorrichtung.jpg



THS174-150-DIN54307.jpg



THS174.jpg



THS265-CW6x33----85x175.jpg



THS265-P8-8kN press with counterplatten.jpg



THS290-1.JPG



THS290-10-Scheerklemhalterung3.jpg



THS323-9118 Reissverschluss zipper.jpg

www.grip.de G16 ASTM DIN ISO fixtures
[2]



THS325-2-01-wood.jpg



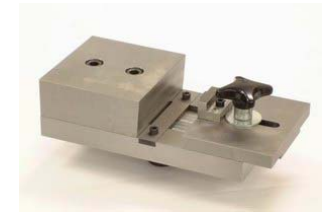
THS450.jpg



THS453-44p5-P25p4.jpg



THS474-C307-Af159--AT.jpg



THS534.jpg



THS543-140- ISO6872..jpg



THS543-140.jpg



THS548.jpg



THS581.jpg



THS625-1--DIN-EN582ASTM C633.jpg



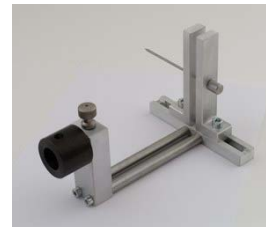
THS63-Zahnbuerste-2.jpg



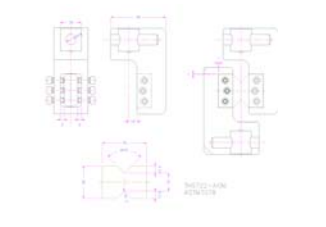
THS706-ASTM-13-9-07.jpg



THS716-10-spike-tester_NFG07145.jpg



THS716-20-EN12310_needle_nagel.jpg



THS722-Af36---ASTM7078-V-notched-rail

www.grip.de G16 ASTM DIN ISO fixtures
[3]



THS757-20.jpg

[MASTER] C:\th\G16-ISO-EN-ASTM-DINISO

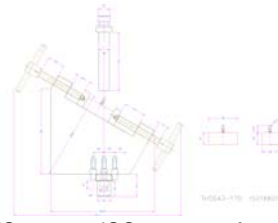


THS543-140- ISO6872..jpg

[MASTER] C:\th\G16-ISO-EN-ASTM-DIN\ISO\ISO14801

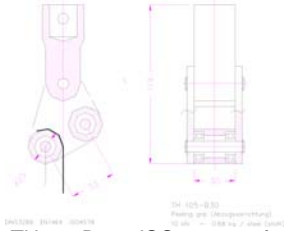


THS543-170 ISO14801.jpg



THS543-170 ISO14801.wmf

[MASTER] C:\th\G16-ISO-EN-ASTM-DIN\ISO\ISO4578 - see G14 - TH105-B30



TH105-B30 - ISO4578.wmf

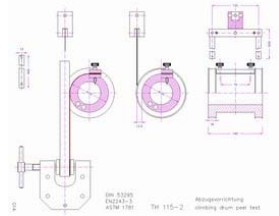


TH105..jpg

[MASTER] C:\th\G16-ISO-EN-ASTM-DIN\special



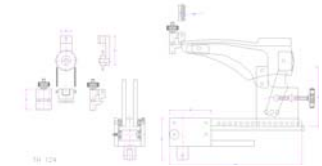
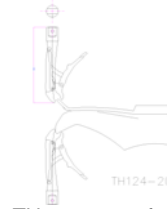
TH115-2-- see G14.jpg



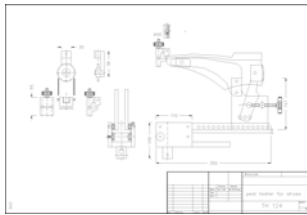
TH115.jpg



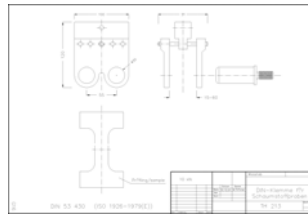
TH121-2-Stauchdruckversuch-zusammen.TH124-20.wmf



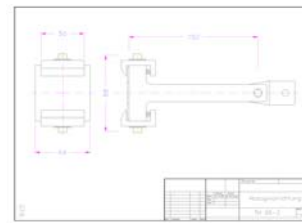
TH124-shoe--wrpp.wmf



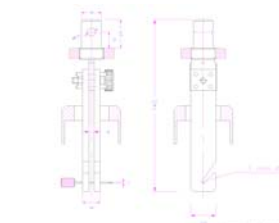
TH124-shoe-tester.wmf



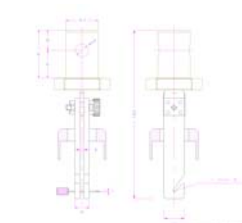
TH213-schaumstoff.wmf



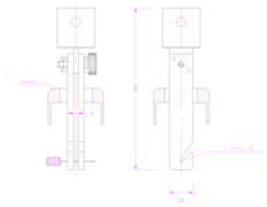
TH95-2.wmf



THS111-Am16-DIN53506.wmf



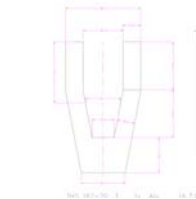
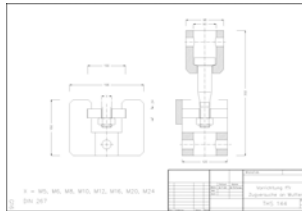
THS111-Am317.wmf



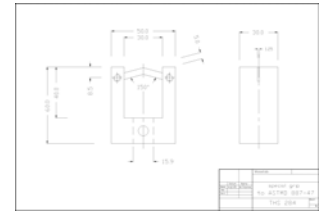
THS111-DIN53506.wmf



THS111_DIN53506_EN12773_Footwear_THS144--DIN267.wmf



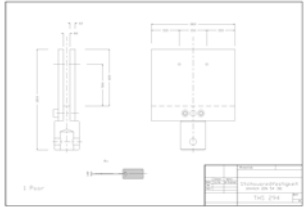
THS162-20-3.wmf



THS284--ASTMD887-47.wmf

www.grip.de G16 ASTM DIN ISO fixtures

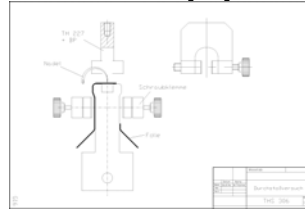
[8]



THS294--DIN54301.wmf



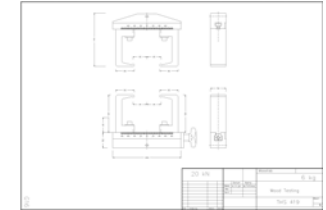
THS306.jpg



THS306.wmf



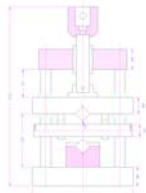
THS419-2.jpg



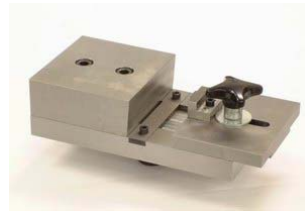
THS419-wood.wmf



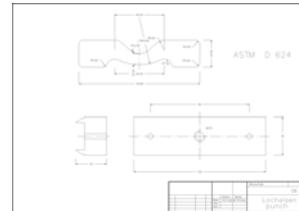
THS450.jpg



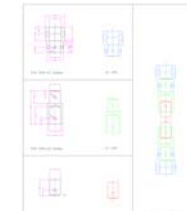
THS459-VDG359 Keildruckprüfung.wmf



THS534-EN.jpg



THS54-Punch.wmf



THS545-ASTM-C633.wmf



THS548.jpg



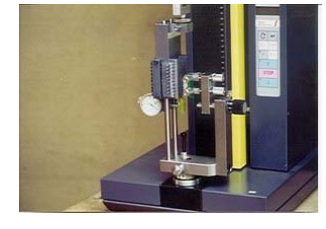
THS554-Nasszug-12-03.jpg



THS554-nasszug-plexi.jpg

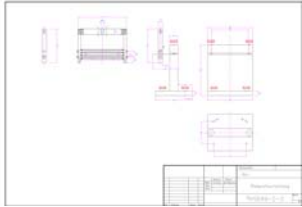


THS625-1--DIN-EN582-600x600.jpg

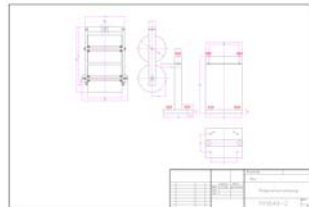


THS63-z1.jpg

www.grip.de G16 ASTM DIN ISO fixtures
[9]



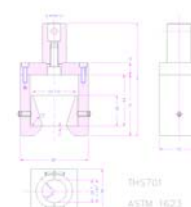
THS649-2-2-Passprüfung.wmf



THS649-2.wmf



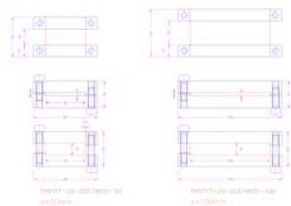
THS701-2--ASTM1623.jpg



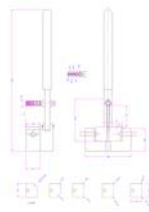
THS701-ASTM1623.wmf



THS717-20-Gost4651.jpg



THS717-20-GOST4651.wmf



THS737--DIN51211.wmf



THS757-20-ASTM D395-B.jpg



THS757-20..jpg



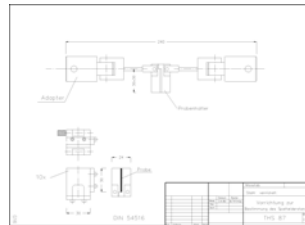
THS757-20.jpg



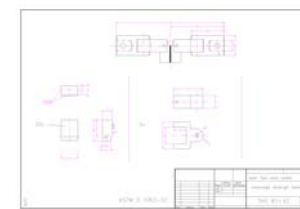
THS757.jpg



THS779-20 Finish device Nasszug
Finsch.jpg



THS87--DIN54516.wmf

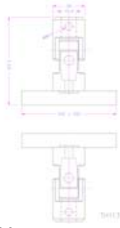


THS87-V2--ASTMD1062-02.wmf

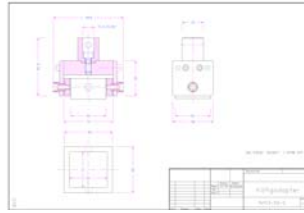
[MASTER] C:\th\G16-ISO-EN-ASTM-DINTH113



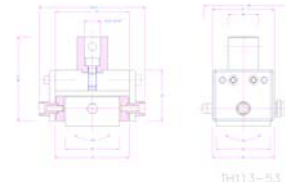
TH113-1--EN1607.jpg
Zugplatten mit Gelenk für Klebeprobe



TH113-100x100-blocking-test.wmf



TH113-50-DIN53292.wmf



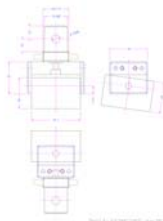
TH113-53.wmf



TH113-ASTM D6484.jpg



TH113-ASTMC297-Am35.jpg



TH113-ASTMC297-Am35.wmf



TH113...jpg

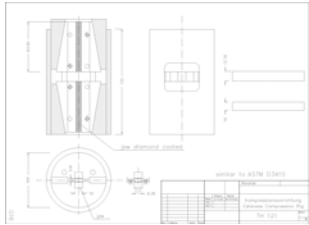


TH113..jpg



TH113.jpg

[MASTER] C:\th\G16-ISO-EN-ASTM-DINTH121 THS613



TH121-1-compression.wmf



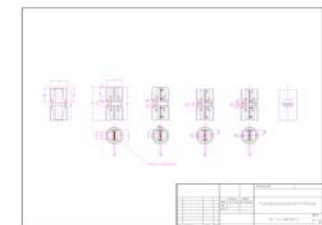
TH121-1-Stauchdruckversuch-fuer-Stahl



TH121-2-Stauchdruckversuch-alle-Teile.jp



TH121-2-Stauchdruckversuch.jpg

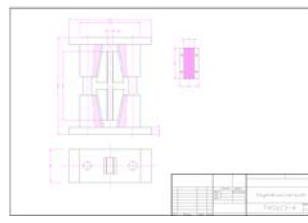


TH121-MPAB-2.wmf

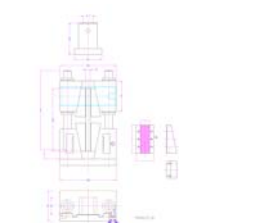
LEAD Technologies Inc. V1.01



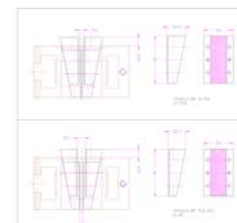
THS613 - Keildruckversuch.jpg



THS613-4-Kegeldruck.wmf



THS613-8.wmf



THS613-BPxxx.wmf

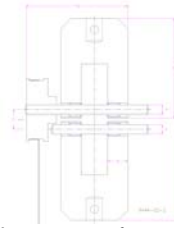
[MASTER] C:\th\G16-ISO-EN-ASTM-DINTH44



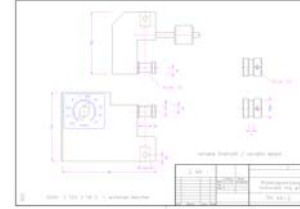
TH44-2---o-Ring.jpg



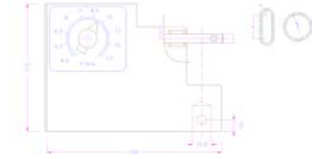
TH44-OT-4-fixed-pin.jpg



TH44-02-2.wmf



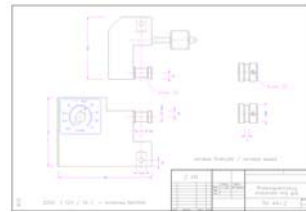
TH44-2---DIN53504 O-Ring.wmf



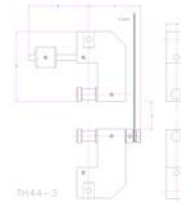
TH44-2--smallest-o-ring.wmf



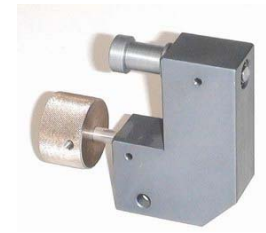
TH44-2-O-Ring.jpg



TH44-2..wmf



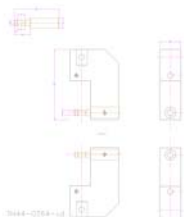
TH44-3.wmf



TH44-OT-upper-part.jpg



TH44-OT.jpg

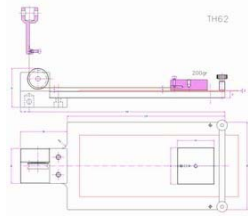


TH44-OT64-xd.wmf

[MASTER] C:\th\G16-ISO-EN-ASTM-DIN\TH62-friction



TH62---600x600-fr.jpg



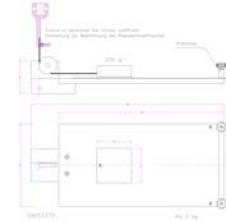
TH62---schema.jpg



TH62-20+cl.jpg



TH62-HS special slide.jpg



TH62-standard.wmf



TH62.jpg

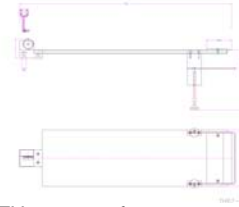
[MASTER] C:\th\G16-ISO-EN-ASTM-DIN\TH62-friction\special



TH62-20--.jpg



TH62-20-special version.jpg



TH62-30.wmf



TH62-ASTMD5458.jpg

[MASTER] C:\th\G16-ISO-EN-ASTM-DINTHS174-and-similar Puncture



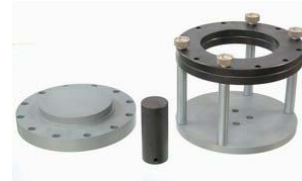
THS145-20-3.jpg



THS145-27-SL.jpg



THS174-125-Durchzugsvorrichtung.jpg



THS174-150-P50-EN12236.jpg



THS174-20-4.jpg



THS174-24-P6-Z3-open.jpg



THS174-66-S1.jpg



THS174-93-P127.jpg



THS174-D125-Fr5.jpg



THS174.jpg



THS453-4445-P254-ASTMD3787 .jpg



THS460.jpg



THS511-EN14477-Durchstossversuch.jpg



THS525-35-ASTM-F-1306-90--He.jpg



THS581-2.jpg



THS581-V2.jpg



THS653-2.JPG

www.grip.de G16 ASTM DIN ISO fixtures
[16]



THS805-1.jpg

[MASTER] C:\th\G16-ISO-EN-ASTM-DIN\THS174-and-similar Puncture\THS145



THS145-20-3.jpg



THS145-20-puncher.jpg



THS145-45-ASTMD4833-Am31743..jpg



THS145-8-04.JPG



THS145-D20-L33-holder..jpg



THS145-D20-L33-holder.jpg

[MASTER] C:\th\G16-ISO-EN-ASTM-DINTHS174-and-similar Puncture\THS174



THS174-125-10-5.jpg



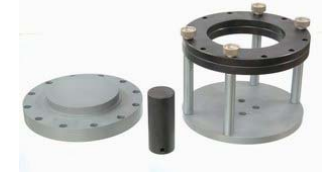
THS174-125-885.jpg



THS174-125-P12.7.jpg



THS174-150-50.jpg



THS174-150-DIN54307.jpg



THS174-200-P100.jpg



THS174-24-P6-L60-Z3-closed.jpg



THS174-25p4-P12p7-S1.jpg



THS174-3-20--98.jpg



THS174-66-S1--2.jpg



THS174-66-S1.jpg



THS174-D102-P19-ASTM5748.jpg



THS174-D82p5-P19.jpg



THS174.jpg

[MASTER] C:\th\G16-ISO-EN-ASTM-DIN\THS174-and-similar Puncture\THS174\THS174-Dorn



THS174-200-P100..jpg



THS174-OT-P19.jpg



THS174-P100.jpg

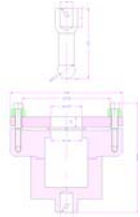


THS174-P19TE-19x150-Teflon-ASTM574iTHS174-PIN12p7-ad159.wmf



THS174-sonderpin-R5-14-9-07.jpg

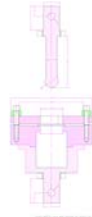
[MASTER] C:\th\G16-ISO-EN-ASTM-DIN\THS174-and-similar Puncture\THS453



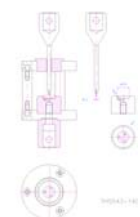
THS453-4445-P254-18-ASTM
D3787.wmf



THS453-4445-P254-ASTMD3787.jpg



THS453-44p45-P25p4-Adm31p7.wmf



THS543-140-ISO6872 - IZ.wmf

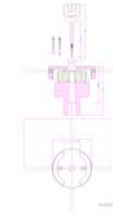
[MASTER] C:\th\G16-ISO-EN-ASTM-DIN\THS174-and-similar Puncture\THS511



THS511-D08_Dorn_EN_14477.jpg



THS511-P2_Dorn-EN14477_DurchstossvrTHS511_EN14477_Durchstossversuch.jp

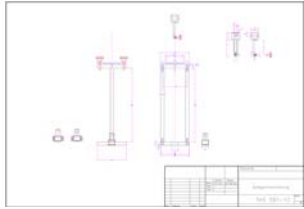


[MASTER] C:\th\G16-ISO-EN-ASTM-DIN\THS174-and-similar Puncture\THS525



THS525-35.jpg

[MASTER] C:\th\G16-ISO-EN-ASTM-DIN\THS174-and-similar Puncture\THS581



THS581-10.wmf



THS581-2.jpg



THS581-3-rs.jpg



THS581-3.jpg

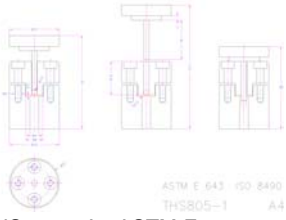


THS581-V2.jpg



THS581.jpg

[MASTER] C:\th\G16-ISO-EN-ASTM-DIN\THS174-and-similar Puncture\THS805-1



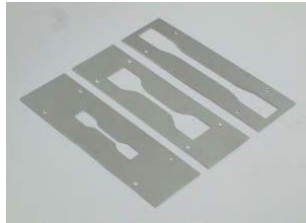
THS805-1-A4-ASTM-E643 +
ISO8490.wmf



THS805-1.jpg

[MASTER] C:\th\G16-ISO-EN-ASTM-DIN\THS265-Stanzvorrichtungen

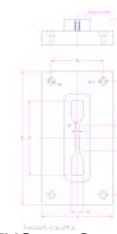
Produkt	Kraftbereich	Druckleistung	Einsatz	Vorteile
 PND 455 PND 830	Druck Druck	4,5 / 1700 8,5 / 850	Hohe Druckleistung über die gesamte Hublänge	Spindel gegen Verstellen gesichert: Ständerhöhe einstellbar über die Zylinderkammer - zusätzliche Luftsperrventile PND 830: Zylinder und Doppelpfand - Stufenlose Einstellmöglichkeit des Zylinderhubes
 PND 1700 PND 3400	Kurbeltrieb Kurbeltrieb	17,0 / 1700 34,0 / 3400	Durch Kurbeltrieb Druckleistung nur vor Druckende	Hochdruckaufbauverstellung über Gewindestift. Kurze Hubabstufung durch Hubbegrenzungseinheit - schnelle Taillage und Luftsperrventile (Zylinder gegen Aufwind)



TH2570-schablonen.jpg



THS265-06-and-02-cutter-for-rubber.jpg



THS265-C4x25p6.wmf



THS265-CH13x57-ASTM-D638-1-cutter.jp



THS265-CH13x57-cut.jpg



THS265-CH13x57-cutter-strong.jpg



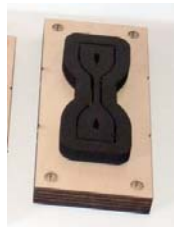
THS265-CSS12p5x75-Alu-steel.jpg



THS265-CW-without foam-Stanzwerkzeug.jpg



THS265-CW10x80-cutter.jpg



THS265-CW5x20.jpg



THS265-CW6x33---14-8-07-85x175mm.jp



THS265-CW6x33--cutter-Bandschnitt.jpg

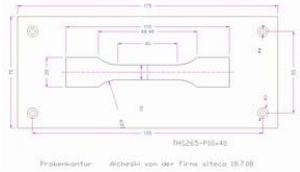


THS265-CWF6x33-Stanzvorrichtung mit Adapter fuer Test in ZPM.jpg



THS265-CWS135-ASTM-D642.jpg

www.grip.de G16 ASTM DIN ISO fixtures
[26]



TMS265-P10x40--Alteco-7-08.jpg



TMS265-P16-P17.jpg



TMS265-P50x50-R3--2-3-07.jpg



TMS265-P8-8kN Stanze-mit
Gegenplatte.jpg



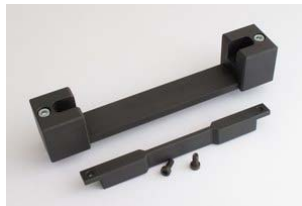
TMS265-PP17 pneumatic press-17kN
60kg 70-220mm.jpg



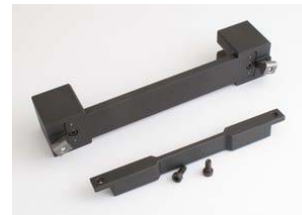
TMS265-S16-S17-cutter.jpg



TMS265-SOD36p6--sonderstanzwerkzeug



TMS727-20 Halter für Fräsvorrichtung.jpg



TMS727-20-Halter für
Fräsvorrichtung-965.jpg

[MASTER] C:\th\G16-ISO-EN-ASTM-DIN\THS265-Stanzvorrichtungen\THS727-fraesvorrichtung



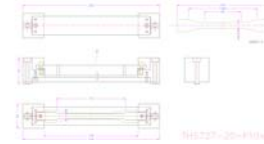
THS727-11-84-Spritzenhalter.wmf



THS727-20-P10x60+P10x80--ANA-Klemm
zum Fraesen von Proben.jpg



THS727-20-P10x60+P10x80.wmf

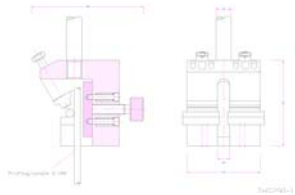


THS727-20-P10x60.wmf



THS727-20-single-drawings.wmf

[MASTER] C:\th\G16-ISO-EN-ASTM-DINTHS290-wire



THS290-1-DIN4099.wmf



THS290-1.jpg



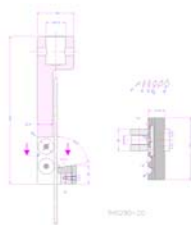
THS290-10-Am50.wmf



THS290-10-Scheerklemmhalterung3.jpg



THS290-20-ASTMA185.jpg



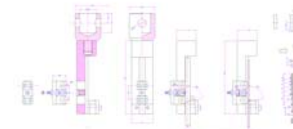
THS290-20.wmf



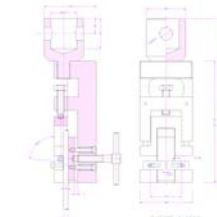
THS290-30-Af60.jpg



THS290-30-Af60.jpg

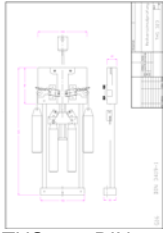


THS290-30-Af60.wmf



THS290-4-Af60.wmf

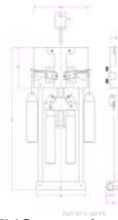
[MASTER] C:\th\G16-ISO-EN-ASTM-DIN\THS323 Zipper - Reissverschluss



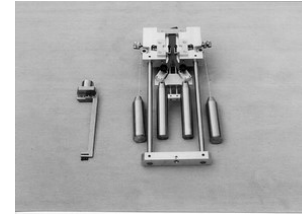
THS323--DIN3419-1.wmf



THS323-9118.jpg



THS323-af20.wmf



THS323-Reissverschluss.jpg



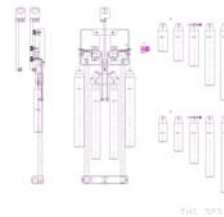
THS323-reissverschluss-1-09-2.jpg



THS323-reissverschluss-1-09-3.jpg

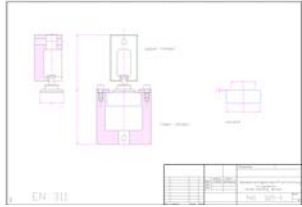


THS323-reissverschluss-1-09.jpg



THS323..wmf

[MASTER] C:\th\G16-ISO-EN-ASTM-DIN\THS325



THS325-1-01-03-04--EN311.wmf



THS325-1-01-03.jpg



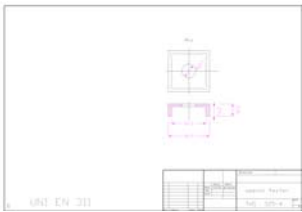
THS325-1-01-1-wood.jpg



THS325-1-02.jpg



THS325-1-04-wood.jpg



THS325-1-04.wmf



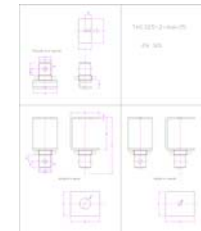
THS325-2-01-wood.jpg



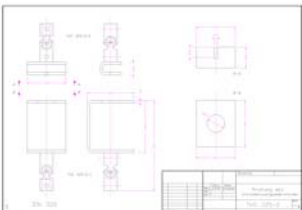
THS325-2-02+THS327-screw-wood.jpg



THS325-2-02-wood.jpg

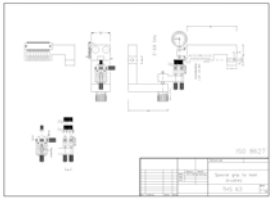


THS325-2-Adm35-EN320.wmf



THS325-2.wmf

[MASTER] C:\th\G16-ISO-EN-ASTM-DIN\THS63-teeth-brush-test



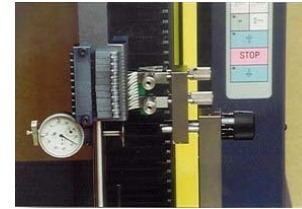
THS63-teethbrush.wmf



THS63-z1.jpg



THS63-z2.jpg



THS63-z3.jpg



THS63-Zahnbrueste-2.jpg

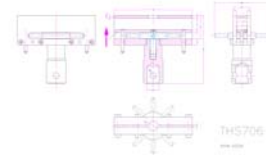
[MASTER] C:\th\G16-ISO-EN-ASTM-DIN\THS706



THS706-ASTM D2229-10-9-07.jpg



THS706-ASTM D2229-3-9-07.jpg

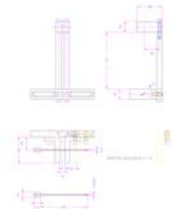


THS706-ASTM D2229.wmf

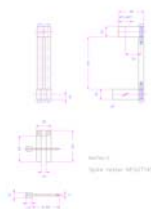


THS706-ASTM-13-9-07.jpg

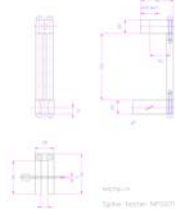
[MASTER] C:\th\G16-ISO-EN-ASTM-DINTHS716



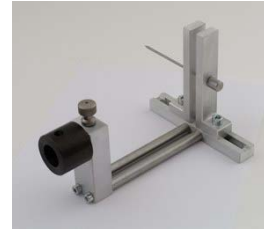
THS716-11 EN12310.wmf



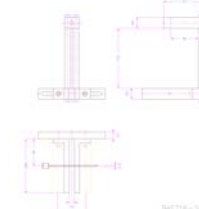
THS716-11--NFG07145-Nadel-Nagel.wmf



THS716-11--NFG07145.wmf



THS716-20-EN12310.jpg



THS716-20.wmf



THS716-spike-tester.jpg