



# Newsletter

## Part 3

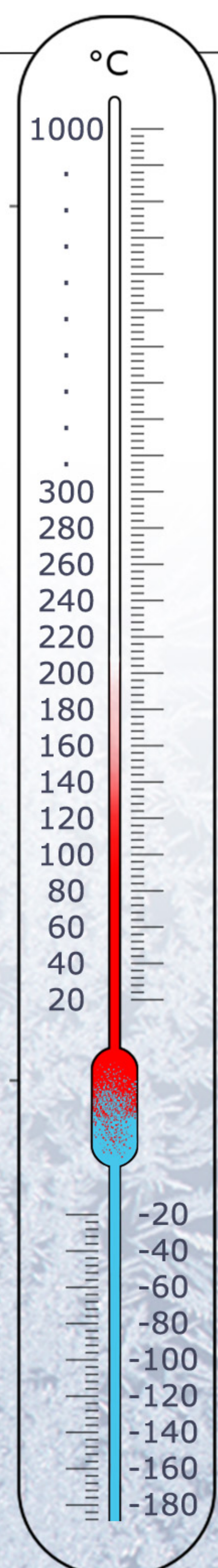
### From -180°C to 1000°C Devices for tensile tests at extreme temperatures

In the previous newsletters, we shared a range of our temperature chambers and suitable accessories.

With this newsletter we would like to underline our temperature category by presenting some of our special heating and cooling fixtures.

Last but not least, we have also listed our THS1141 series for temperature chambers. Thus, completing this chapter.

Check web link for more information : <https://grip.de/G21/>

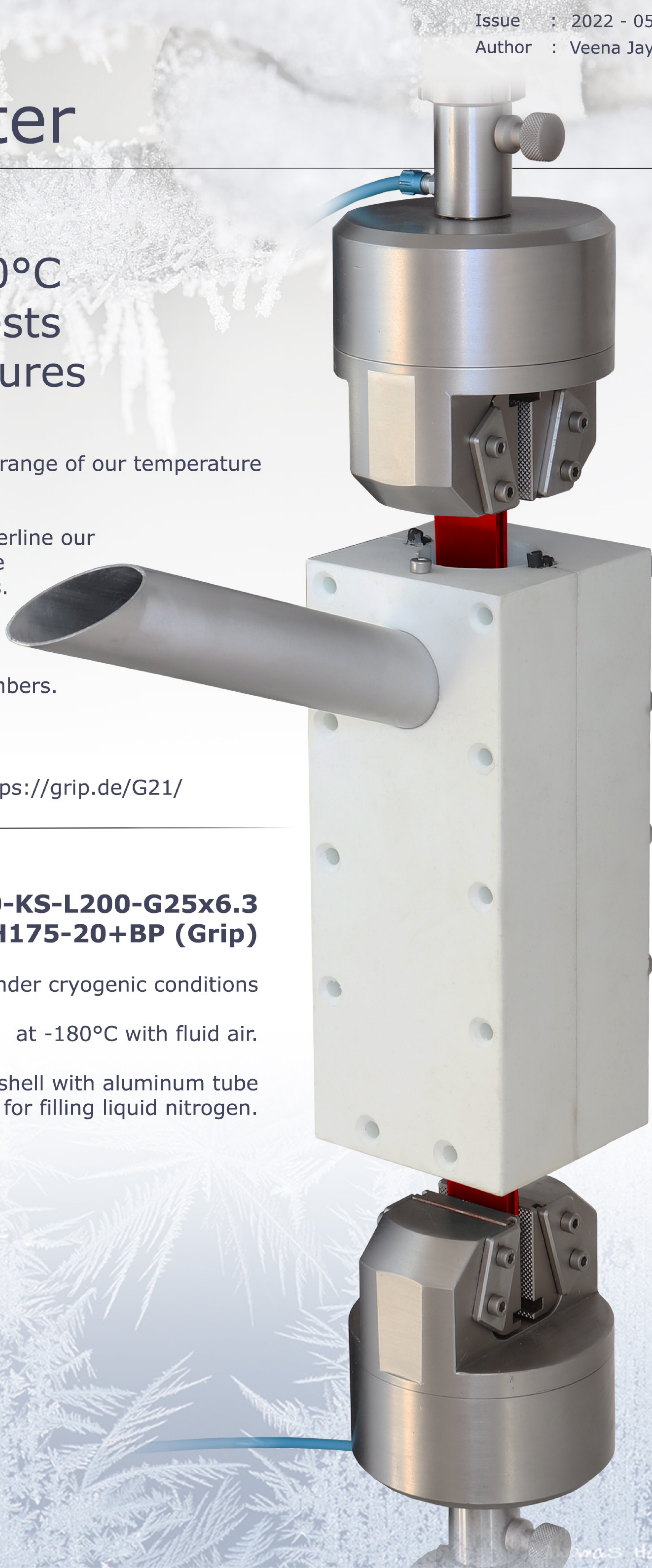


#### **THS1485-30-KS-L200-G25x6.3 + TH175-20+BP (Grip)**

Tensile test under cryogenic conditions

at -180°C with fluid air.

Special Teflon cold shell with aluminum tube  
for filling liquid nitrogen.



Click here, to download all images and animations of the listed grips



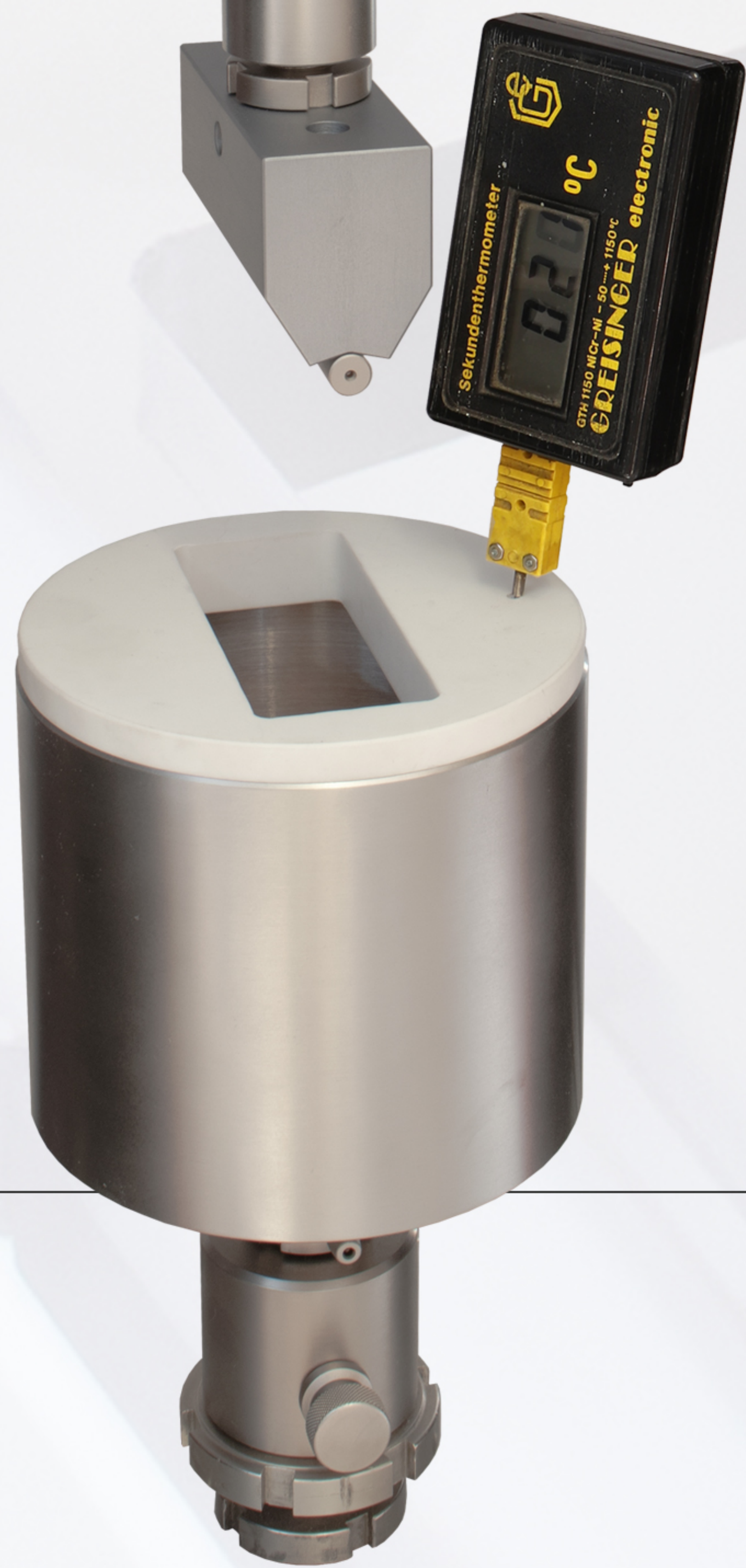


---

**THS1485-10  
+ TH22-F10 (Grip)**

Bend test under cryogenic conditions.

Stainless steel bowl with Teflon lid and inlet for Liquid nitrogen.



---

**THS1485-20  
+ THS341k (Grip)**

Peel test under cryogenic conditions  
with pneumatic lift.

Teflon container for liquid nitrogen.





---

## TH4220-D150-2.5kN-500°C

Water cooling active heated platen  
for compression test.

Max. temperature +500°C.



---

## Peltier heater cooler

Peltier plates can be used for temperature tests  
on thin and flat specimens such as adhesive tapes and similar.  
Water is used to remove the extra heat.

THS1740 Peltier fixture is supplied with  
RS485 Omron temperature regulator.



[See datasheet](#)

---

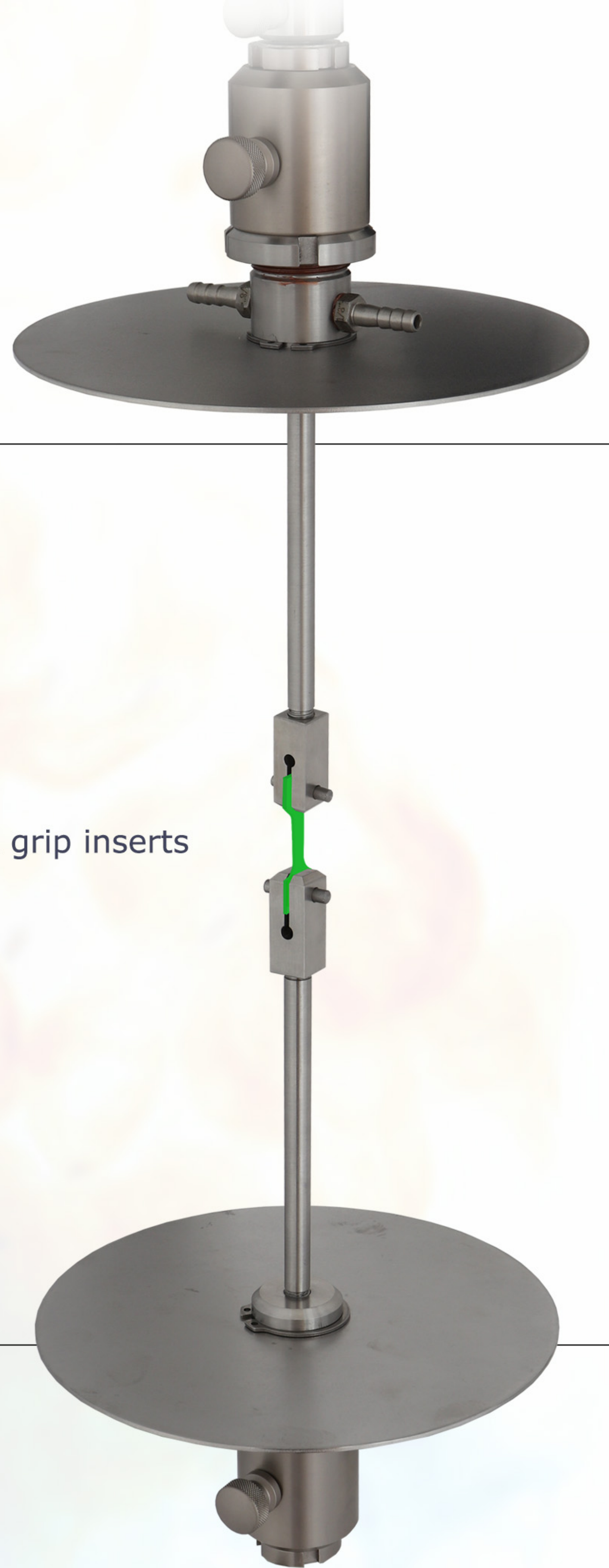


# THS1141 series for temperature chambers

---

## THS1141-V77

Special pull rods with chuck grip inserts  
for temperature chamber.



## THS1141-V50-GT40+psd+EM18x2.5-T600 +EM18x2.5-T1200

Special pull rods for temperature chamber.

Max. temperature range :  
+600°C and +1200°C.

One carrier can be combined  
with a variety of inserts.

---



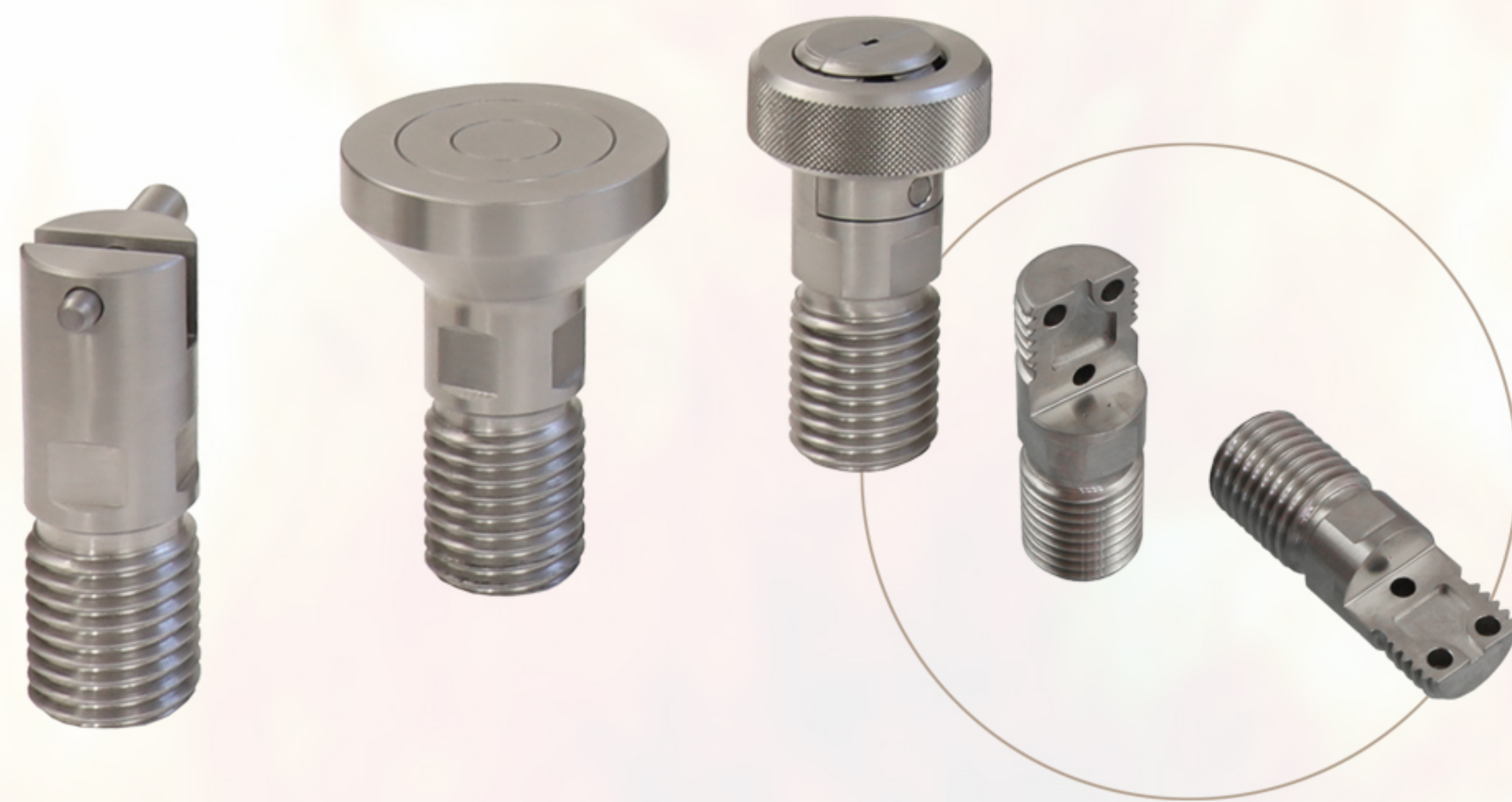


## THS1141-V32-Af36+E01+E02+E03-4841

Holder for high temperature usage.

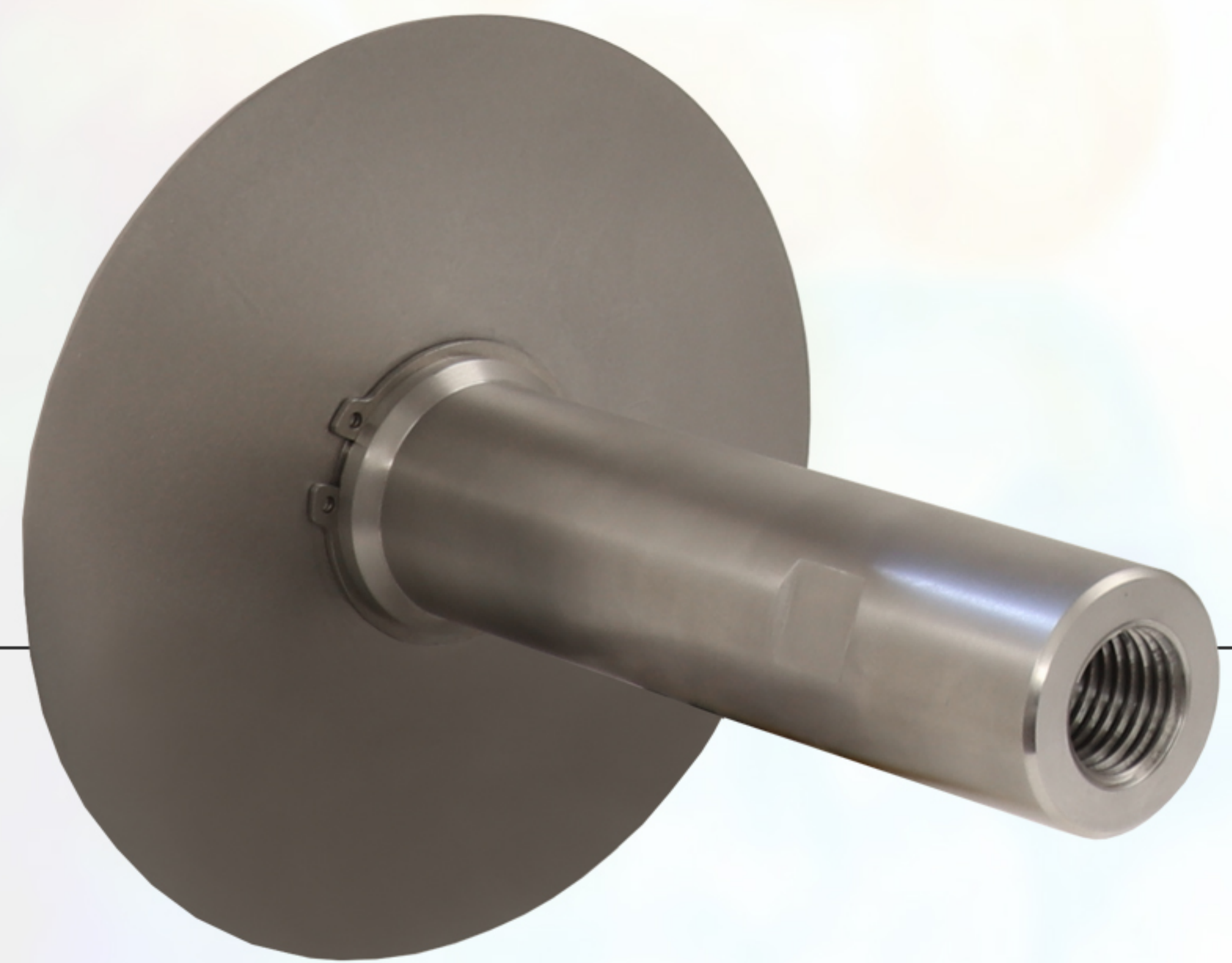
Max. temperature : +1000°C

Including screen (200 mm diameter) and water cooling to protect upper load cell.



Displayed inserts

- Small compression platens, 60 mm diameter.
- Inserts for tear test on trousers-shaped specimen.
- Inserts for tensile test on dumbbell-shaped specimen.



## THS1141-V32-EM30-L93-4-R10-1.4841

Special inserts for tensile tests.

Max. temperature range : +1000°C

