



## Packaging Material Testing Devices

### Part 2 - Devices for testing bottles and containers

You can review the complete collection on our website at any time.  
Here, you can also see further details and download datasheets.

Website -  
<https://www.grip.de/G16/Packaging/>

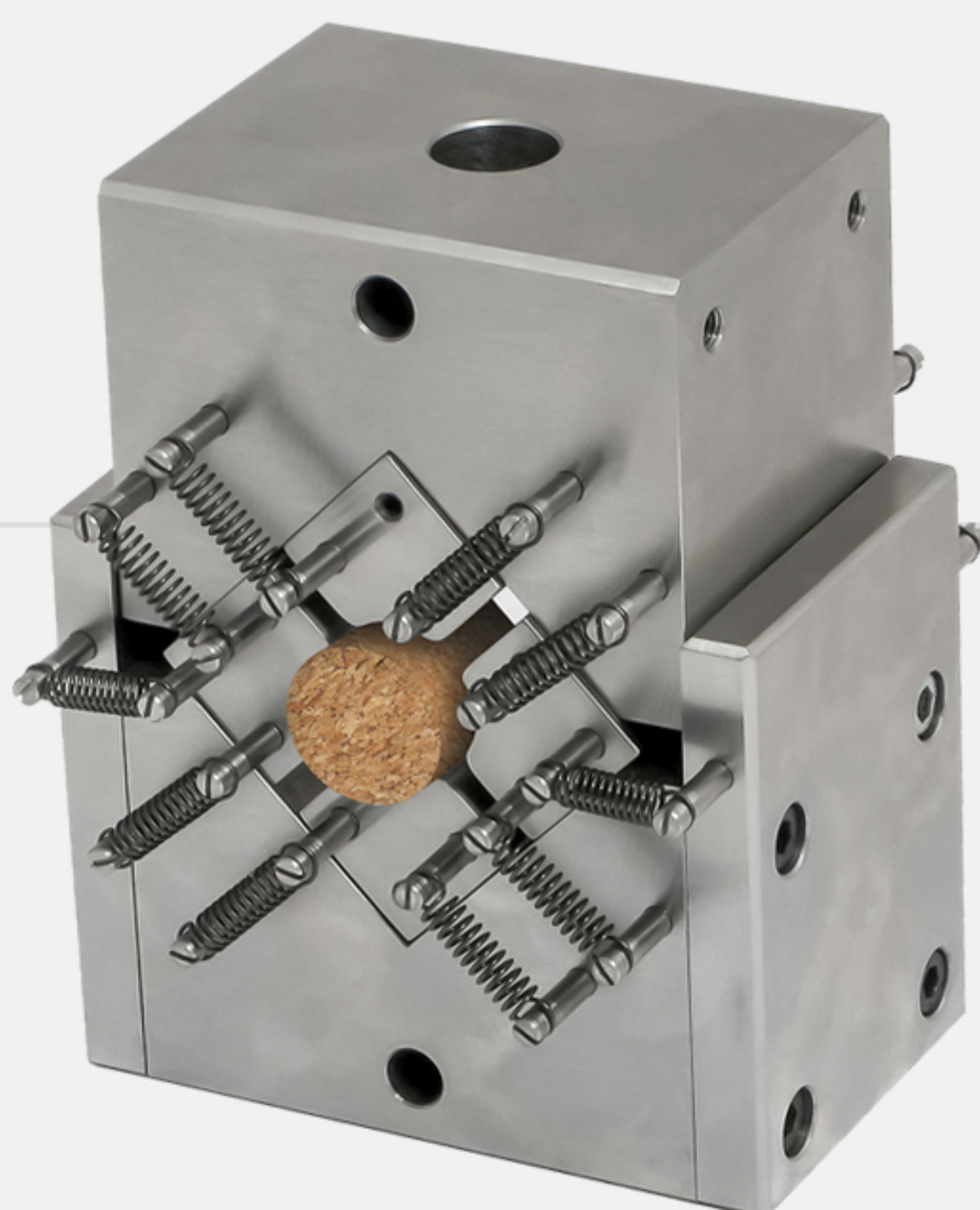


#### THS562-200-3

to measure pull-out force of wine bottle corks.

The fixture consists of a top grip with a cork screw and a bottom bottle holder.

The distance between the rods can be adjusted via screws to accommodate bottles of different diameters.



#### THS523-20

Compression fixture for cork testing

[Click here, to download all images and animations of the listed grips](#)





## THS1064-40

Special fixture to test flip caps of bottles.



## THS807-S56 + THS472g-Gu

To test pull-off strength test of aerosol cap.

Top: Chuck grip (*THS807-S56*)  
Opening: 37 – 67 mm Ø

Bottom: Holder with rubber-coated pins  
(*THS472g-Gu*)



## THS472

Torque testing holders.  
Also used to test torque strength of screwed on lids.

Adjustable distance between pin carriers and pins in X and Y directions to accommodate specimens of various sizes.



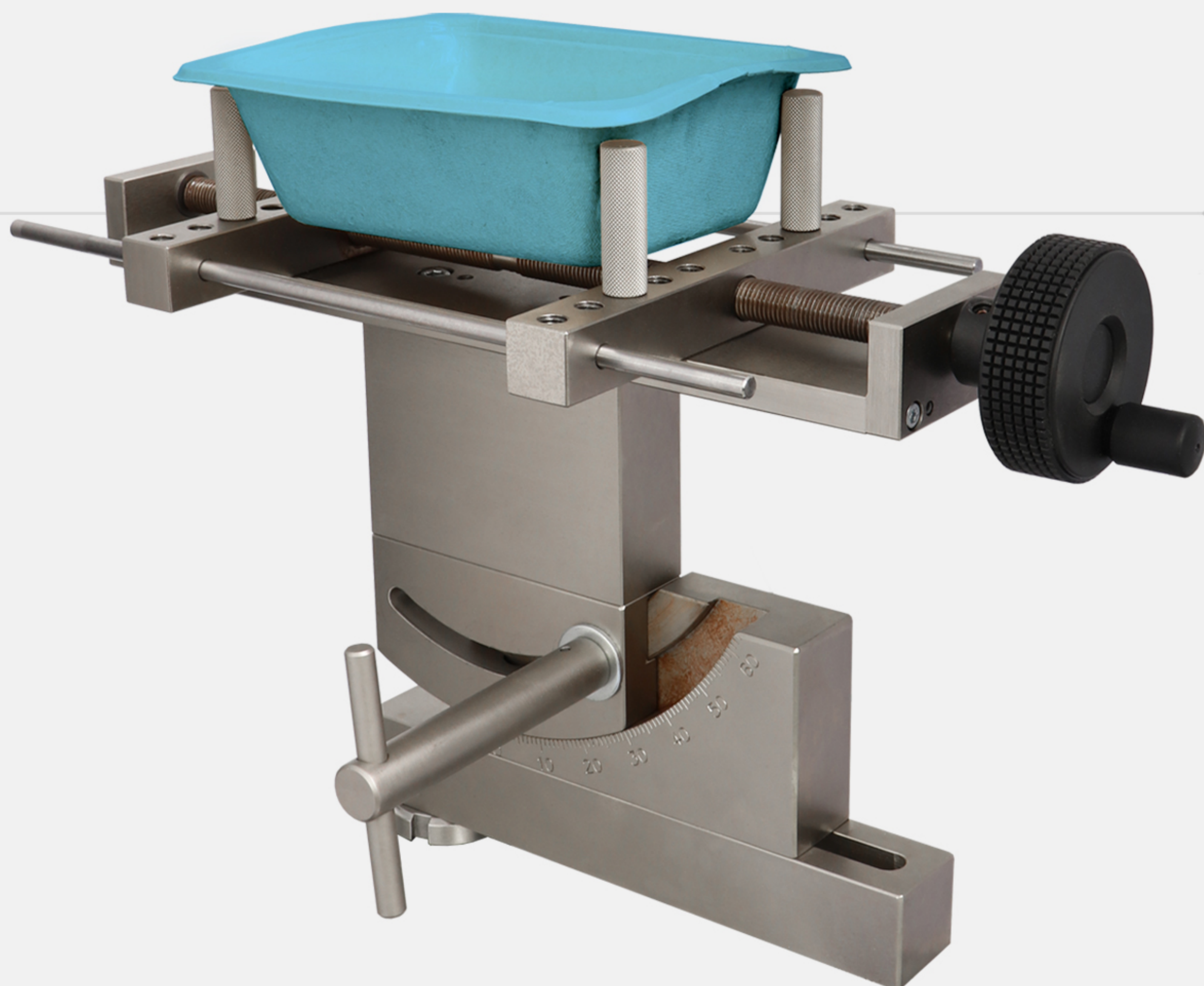


## THS162-250-VH + THS341-6-K

Peel test fixture for yogurt cup.

Cup is kept with vacuum.

Angle 0° and 45°



## THS472W+BP-H40 + THS572-60

Special holder for peel test on aluminium foil packaging.

Attached to THS572-60 adapter with adjustable peel angle 0-60°  
Incl. rubber-coated and serrated pins.

For upper grip we recommend THS341-K.

## THS472+BP + THS572-90

Bottle holder attached to adapter with adjustable test angle.

for peel tests on bottle foil seals under 90° and 135° angles.

With serrated metal pins for better grip on the bottle.

For upper grip we recommend THS341-K and TH227.

