



January 2026

This month, we are pleased to present a selected range of our latest testing fixtures, designed to meet the highest standards of precision, reliability, and performance in modern testing applications.

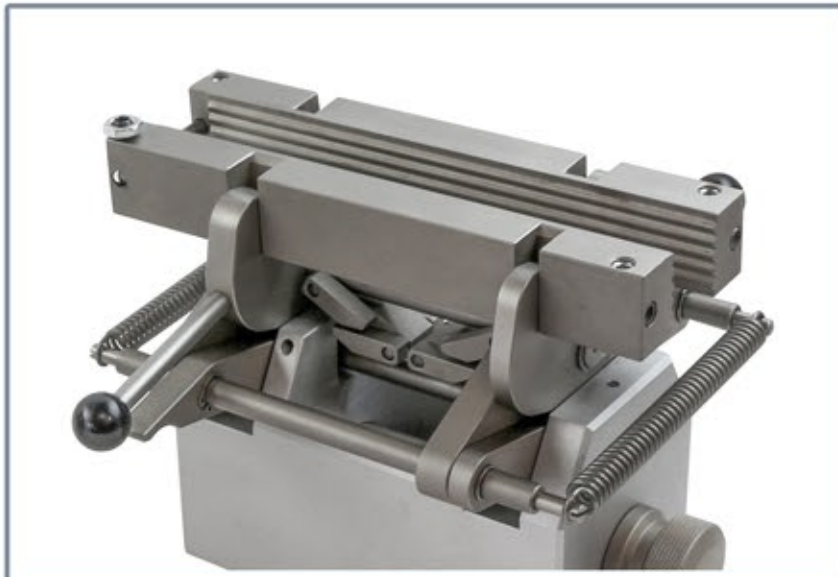


TH11-20-W200-Af60+BW30x200

The special scissor-type grip with extra-wide, wave-shaped jaws has been specifically developed for the reliable testing of nonwoven materials, ensuring optimal force distribution, secure specimen holding, and highly reproducible test results.

Max. load 20 kN
Jaw width 200 mm
Clamping surface 30x200 mm
Steel, nickel-plated
Coupling Af60

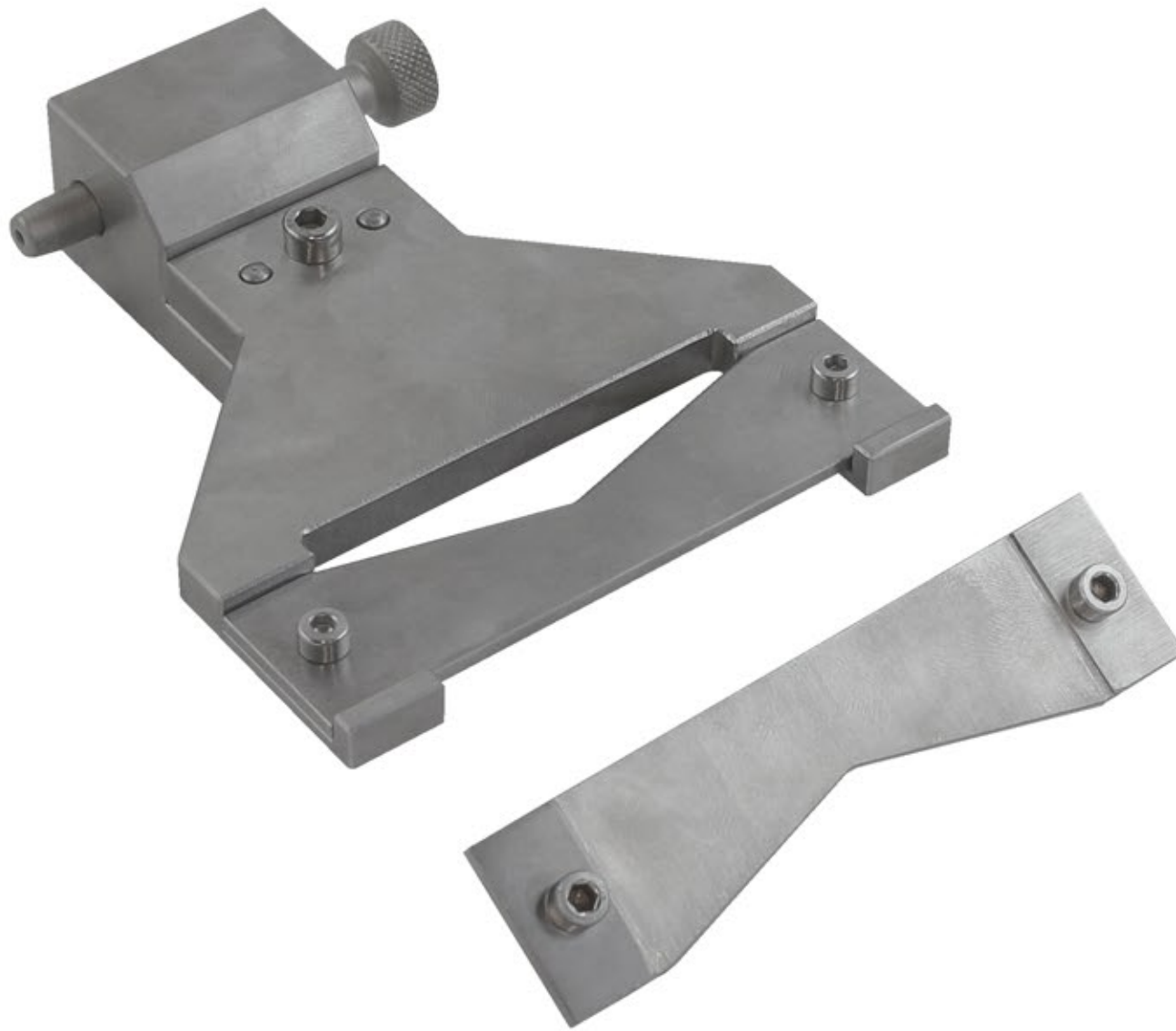
DATASHEET



THS981-70-Af159

Special holder for reliable edge tearing strength testing of paper, designed in accordance with TAPPI T470. Ensures stable specimen positioning and reproducible results. An upper grip is required for testing.

Stainless steel
Coupling Af159



THS1895

Special fixture designed to verify the fundamental performance requirements of uncut finished spectacle lenses in accordance with ISO 14889, ensuring reliable testing conditions and reproducible results.

Max. load 100 N
Steel, nickel coated
Coupling Af159

