



November 2025

This month we are pleased to present a selection of our newest test fixtures!



THS521-Am20-Af20-D21-L300-psd



Stainless-steel pull rod in special design with two compressed-air connections and shielding against overheating in the temperature chamber. For installation on the top of the chamber.

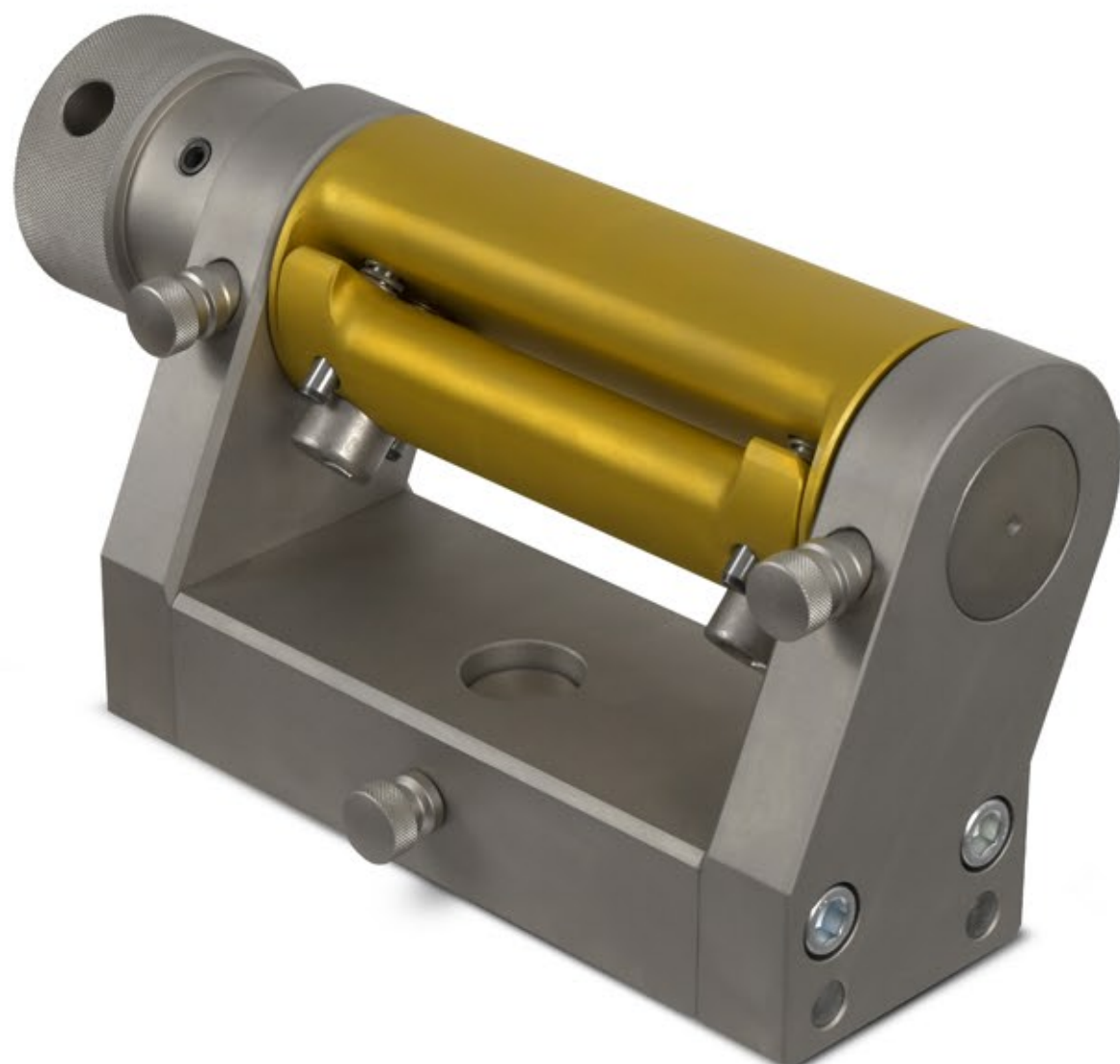
Adapter connection: 20/8
Pin-to-pin distance: 300 mm

SEE DATASHEET

TH221-D80-W120-Af318-TiN

Special ribbon grip with titanium nitride coating for tensile tests on abrasive belts.

Roller diameter: 80 mm
Usable width: 120 mm



THS132-S135

Pneumatic grip with 2 pistons for symmetrical clamping of large specimens.

Maximum specimen diameter: 130 mm

Clamping force: 7 kN / 7 bar

Temperature range: -30 °C to +180 °C

SEE DATASHEET

