

ISO34-1-Fig.2

[THS265](#)

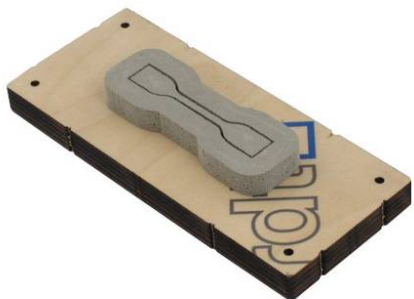
Sample cutter for thermoplastics and elastomers

Stanzvorrichtung für thermoplastische oder Elastomere Kunststoffe



ISO34-1-Fig.2

[THS265](#)



ISO37-2

[THS265](#)

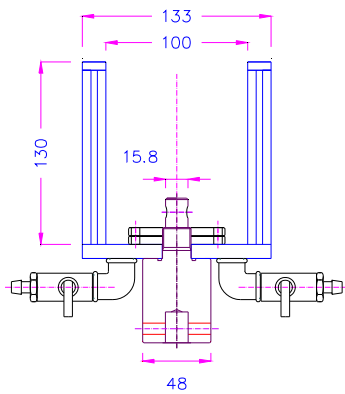
Sample cutter for thermoplastics and elastomers

Stanzvorrichtung für Zugprobegeometrien



ISO37

[THS265](#)



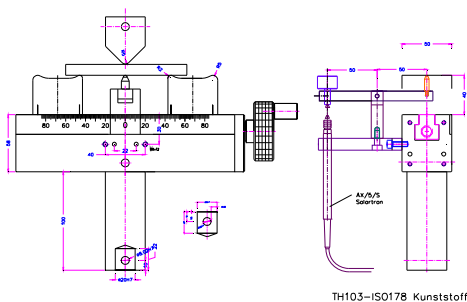
THS648-D100x130-iSO-159

ISO159

THS648

Wet test

Nassprüfung



ISO178

[TH103-AR2R5-ITH](#)

Fixture to determine bending properties of plastics with displacement transducer

Vorrichtung zur Bestimmung der Biegeeigenschaften von Kunststoffen mit induktiven Weggeber



ISO527-2

[THS265-CH10x80](#)

Plastics -- Determination of tensile properties -- Part 2: Test conditions for moulding and extrusion plastics



ISO813

[TH95-3](#)

Determination of adhesion to a rigid substrate -- 90 degree peel method

Bestimmung der Haftung zu starren Materialien - 90°-Schälverfahren



ISO813

[TH95-4](#)

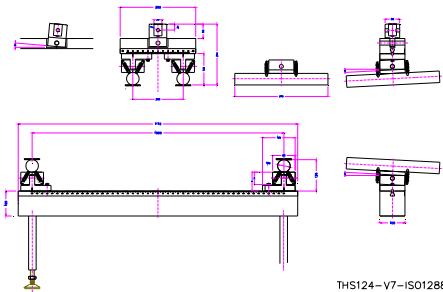


ISO898-1

[THS786-70](#)

Fixture for determination mechanical and physical properties of screws

Vorrichtung zur Bestimmung der mechanischen und physikalischen Eigenschaften von Schrauben



ISO1288

THS124-V7

fixture for determination bending strength of glass

Vorrichtung zur Bestimmung der Biegefestigkeit von Glas

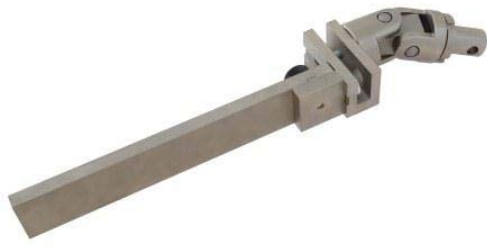


ISO1288-3

THS800

Glass bending fixture upper part

Glasbiegevorrichtung Oberteil



ISO1922

TH193-V4-Am35



ISO1926

TH213-Af20



ISO3037

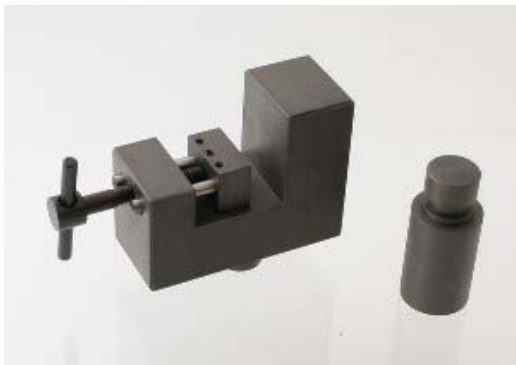
THS733-200

Edgewise crush resistance of corrugated  
fiberboard



ISO3037

THS733-200



ISO3347

[THS740-2](#)

Fixture for determination of shear strength parallel to structure lines

Vorrichtung zur Bestimmung der Scherfestigkeit parallel zur Faser



ISO3379

[THS460](#)

Test fixture to determine distension and strength of surface of leather according to DIN EN ISO3379

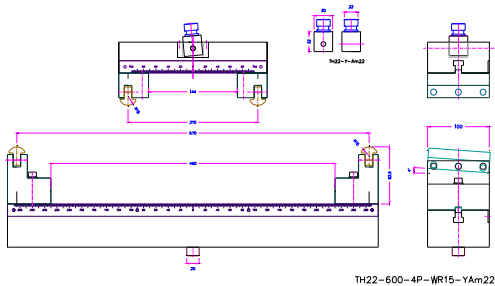


ISO3781

[THS779-5x60](#)

Paper and board -- Determination of tensile strength after immersion in water

Papier und Pappe - Bestimmung der breitenbezogenen Bruchkraft nach dem Eintauchen in Wasser



ISO4013

[TH22-600-4P-CWR15-Y](#)



ISO4074

[TH44-D15-25](#)

Condom Testing



ISO4578

[TH105](#)

Peel Test Fixture for Testing Floating Roller Peel Resistance of Adhesives according to ISO 4578



ISO6133

[TH3-152.4](#)

Rubber and plastics - Analysis of multipeak traces obtained in determination of tear strength and adhesion strength

 [TH3 Datasheet.pdf](#)

 [TH3 Datenblatt.pdf](#)



ISO6238

TH17

Adhesives - Wood-to-wood adhesive bonds - Determination of shear strength by compressive loading

 [TH17 Datasheet.pdf](#)

 [TH17 Datenblatt.pdf](#)





ISO 6259  
Thermoplastics pipes – Determination of tensile properties – Part 3: Polyolefin pipes

ISO 13953  
Polyethylene (PE) pipes and fittings – Determination of the tensile strength and failure mode of test pieces from a butt-fused joint

[THS353-318-10](#)



ISO 6259  
Thermoplastics pipes – Determination of tensile properties – Part 3: Polyolefin pipes

ISO 13953  
Polyethylene (PE) pipes and fittings – Determination of the tensile strength and failure mode of test pieces from a butt-fused joint

[THS353](#)



ISO6259

THS1086-30-70

Thermoplastics pipes - Determination of tensile properties

Rohre aus Thermoplasten - Bestimmung der Eigenschaften im Zugversuch



ISO6259

THS1086-30-70

Thermoplastics pipes - Determination of tensile properties

Rohre aus Thermoplasten - Bestimmung der Eigenschaften im Zugversuch



ISO6507-2

THS71-10

Diamond for vickers

Diamantspitze zur Bestimmung der Vickershärte



ISO6872:2009

THS1620 1 kN

 [THS1620 Datasheet.pdf](#)

 [THS1620 Datenblatt.pdf](#)

Biaxial flexure fixture for ceramics

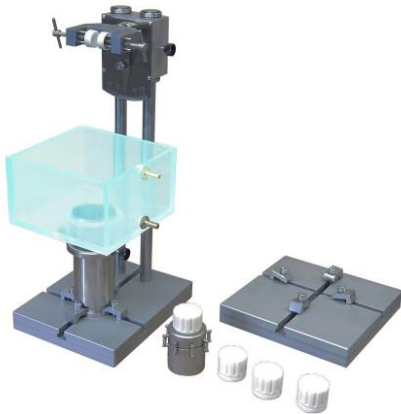


ISO6892-Type 2

THS265-CSS12 7x63

Cutter for steel 1mm  
Sample size 205x35x1mm ( 235 kN )

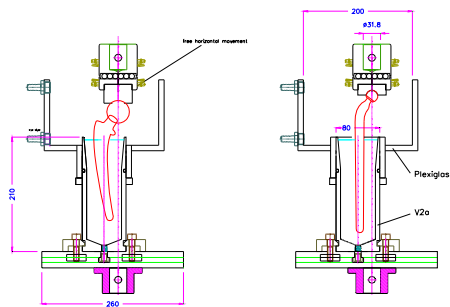
Feinschnittwerkzeug zum Ausstanzen von  
dünnen Metallfolien 205x35x1mm  
( 235 kN )



ISO7206

[THS879](#)

Gliding nail fatigue test.



THS879-30-ISO7206

ISO7206

[THS879](#)

Gliding nail fatigue test.



ISO8295

[TH62-F-ISO8295](#)

Coefficient of Friction Test Fixture  
according to ISO8295

Testvorrichtung für Reibwertprüfung nach  
ISO8295



ISO8339

THS504-52-12-77-30-5

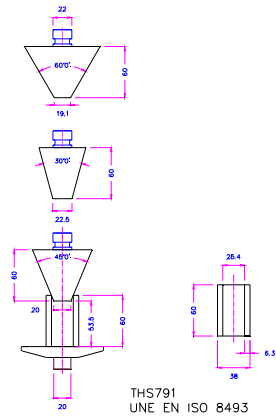
Determination of tensile properties of  
sealants used in joints in building  
construction conform



ISO8339 Fig.2

THS548

Test specimen with aluminium or glass  
supports



ISO8493

THS791

Cone pressure test

Kegeldruckversuch

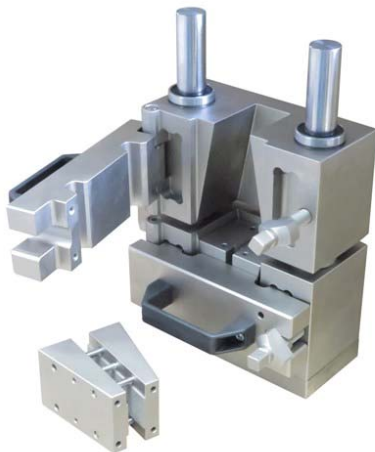


ISO8510

[TH50](#)

90° peel test fixture

Abzugsvorrichtung 90°



ISO8515

[THS613](#)

Compression loading fixture with guides

Kegelkeil-Druckversuch mit Führung



ISO8627  
ISO22254

[THS63-2-Af20-Af8](#)

Toothbrush testing fixture



ISO9073-7

[THS853-20](#)

Textiles - Test methods for nonwovens -  
Part 7: Determination of bending length

Textilien - Vliesstoffe - Teil 7: Bestimmung  
der Biegesteifigkeit



ISO10373-1

Identification cards – Test methods –  
Part1: General characteristics  
Peel test

[TH104-110](#)

6 rollers x 10 mm Ø

1 mm distance between rollers

[TH104-60](#)

2 rollers x 10 mm Ø

1 mm distance between rollers



ISO11405

THS543-191-Am2022

Using this fixture is possible to measure shear force of the teeth

Mit Hilfe dieser Vorrichtung kann man Scherkräfte an Zähnen messen

ISO11644

THS1186-Af159-ISO11644

Leather test fixture with very high adhesion values

Conform to ISO11644

Steel, nickel-plated



ISO12192

THS733-200

Ring crush test



ISO12332

THS453-44.5-P25.4

Fixture for determination burst force

Vorrichtung zur Bestimmung der  
Berstkraft

[more](#)



ISO12625-5

[THS779-5x60](#)

Tissue paper and tissue products - Part 5:  
Determination of wet tensile strength

Tissue-Papier und Tissue-Produkte - Teil  
5: Bestimmung der breitenbezogenen  
Nassbruchkraft



	<p>ISO13503-2</p> <p>THS947-50.8</p> <p>Petroleum and natural gas industries -- Completion fluids and materials -- Part 2: Measurement of properties of proppants used in hydraulic fracturing and gravel-packing operations</p> <p>Erdöl- und Erdgasindustrie - Komplettierungsflüssigkeiten und -materialien - Teil 2: Messung der Eigenschaften von Stützmaterialien zum Einsatz bei hydraulischen Fraktionierungs- und in Kiespackungsvorgängen</p>
	<p>ISO13934-1</p> <p><a href="#">THS265-CHR50x260</a></p> <p>Textiles -- Tensile properties of fabrics -- Part 1: Determination of maximum force and elongation at maximum force using the strip method</p>
	<p>ISO13936-3</p> <p>THS1108</p> <p>needle jaws</p>

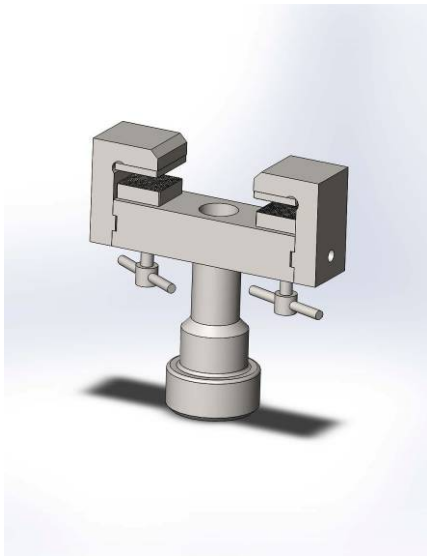
	<p>ISO13954</p> <p>THS353-5x26-CH-Am35</p> <p>Plastics pipes and fittings - Peel decohesion test for polyethylene (PE) electrofusion assemblies of nominal outside diameter greater than or equal to 90 mm</p> <p>Kunststoffrohre und Formstücke - Schälfestigkeitsprüfung von Polyethylen-(PE-)Elektroverbindungen von Nenndurchmesser größer oder gleich 90 mm</p>
	<p>ISO14125</p> <p>TH238</p> <p>Fibre-reinforced plastic composites - Determination of flexural properties</p> <p>Faserverstärkte Kunststoffe - Bestimmung der Biegeeigenschaften</p>
	<p>ISO14126</p> <p><a href="#">THS793</a></p> <p>Fibre-reinforced plastic composites - Determination of compressive properties in the in-plane direction</p> <p>Faserverstärkte Kunststoffe - Bestimmung der Druckeigenschaften in der Laminebene</p> <p> <a href="#">THS793 Datasheet.pdf</a></p> <p> <a href="#">THS793 Datenblatt.pdf</a></p>



ISO14130

THS884-EN2562-280-200-Af20-iTH

TH238 ITH



ISO14272

THS1146-Af60

Specimen dimensions and procedure for cross tension testing resistance spot and embossed projection welds according to ISO14272



THS1146

Similar to ISO 14272

Specimen dimensions and procedure for cross tension testing resistance spot and embossed projection welds



ISO14272

THS1146

Resistance welding -- Destructive testing of welds -- Specimen dimensions and procedure for cross tension testing of resistance spot and embossed projection welds



ISO14801

THS543-170

With this fixture inserted dental implants can be tested, in order to carry out dynamic test attempt. (Reverse bending strength)

Eine Vorrichtung, mit der man Dentalimplantate einspannen kann, um damit z. B. einen dynamischen Testversuch durchzuführen (Biegeweche selfestigkeit)

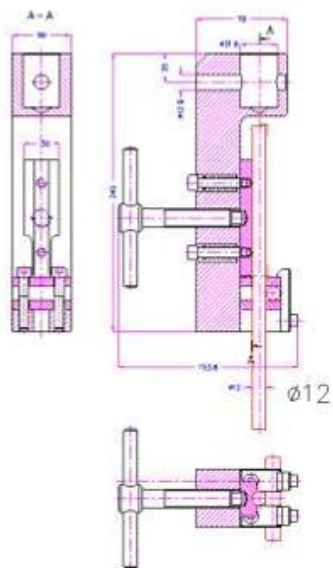


ISO15361

THS1096

Zero span fixture for paper testing  
Guides with ballbearing  
Chain-adapter Af15.9mm

Vorrichtung zur Bestimmung der Nullreißfestigkeit  
mit Führung mit Kugelbuchsen  
+ Kettenadapter



ISO15630

THS290-31 D4...d12



ISO17697

[THS1205](#)

Needle tear test fixture according to ISO 17697 (Method A), EN 13572 (Method A), Adidas ST-05

[THS1205 Datasheet.pdf](#)

[THS1205 Datenblatt.pdf](#)

	<p>ISO21182</p> <p><a href="#">TH62-40-ISO21182</a></p> <p>Fixture for determination friction coefficients, friction of conveyor belt</p> <p>Vorrichtung zur Bestimmung des Reibwertkoeffizienten, mit der man den Reibwert z. B. von Fördergurten ermitteln kann</p>
<p><a href="mailto:info@grip.de">info@grip.de</a></p> <p>TT 17 Dec 2018</p>	<p><a href="#">TOP</a></p>