

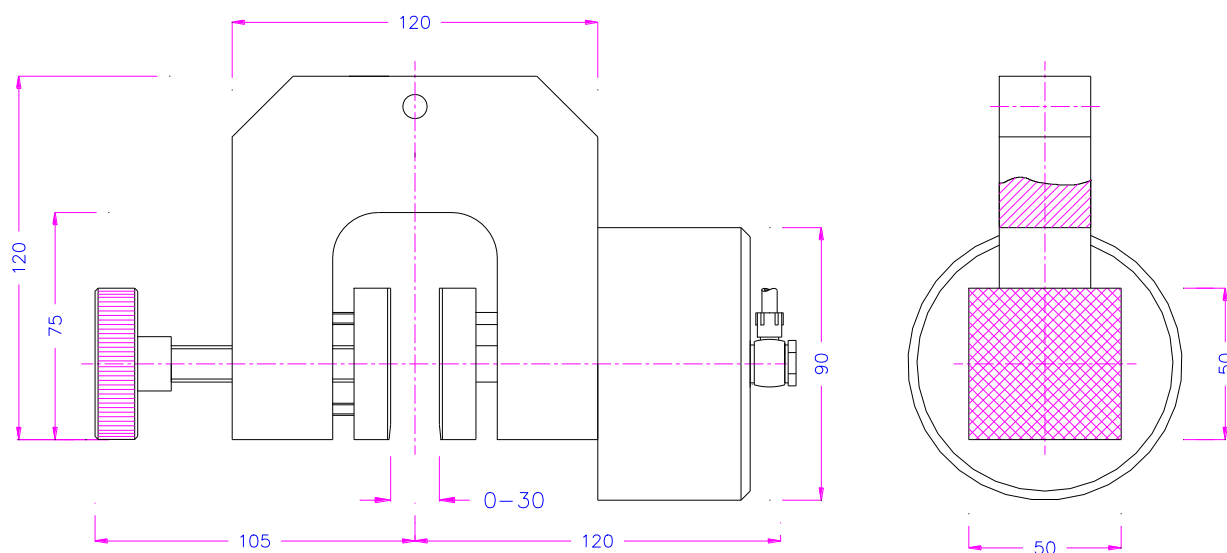
PNEUMATIC GRIP 3.5 kN

Universal pneumatic grip with 30 mm opening.
For paper, plastic, wooden samples.

TH108 grips are supplied in pairs, but can also be ordered as a single grip (0.5 pair). Grips and jaws need to be ordered separately.



Item no.:	TH108
Clamping force:	3.5 kN/7 bar (8 kN/16 bar with TH216 compressor see p. 3)
Coupling:	Af15.9 mm. Further couplings on request
Body:	Aluminum, anodized
Temperature range:	0 ... 70°C Other temperature ranges on request
Weight per grip:	1.3 kg each grip (without jaws)
Scope of delivery:	1 pair of grips (without jaws)



Jaws for TH108

Scope of delivery: 1 set = 4 jaws

Item No.	Jaw surface	Clamping surface H x W	Opening	Weight / pair
TH108-B	Blank (smooth) jaws	50x50 mm	0-30 mm	0.38 kg
TH108-BG	Rubber jaws	50x50 mm	0-28 mm	0.38 kg
TH108-BV4	V-jaws	Clamping height 50 mm	4-26 mm Ø	0.45 kg
TH108-BP	Pyramid (serrated) jaws	50x50 mm	0-30 mm	0.36 kg
TH108-BW	Wave jaws	50x50 mm	0-30 mm	0.34 kg
TH108-BD	Diamond jaws	50x50 mm	0-30 mm	0.38 kg
TH108-B100	Blank (smooth) jaws	50x100 mm	0-30 mm	0.76 kg
TH108-BG100	Rubber jaws	50x100 mm	0-28 mm	0.78 kg
TH108-BP100	Pyramid (serrated) jaws	50x100 mm	0-30 mm	0.72 kg
TH108-BW100	Wave jaws	50x100 mm	0-30 mm	0.69 kg
TH108-BD100	Diamond jaws	50x100 mm	0-30 mm	0.76 kg

Insert jaws for TH108: Scope of supply 1 set = 4 jaws
Quick change system, insert jaws require carriers (TH108-GT)

Item no.	Surface	Clamping surface H x W	Opening	Weight 1 pair
TH108-GT	Carrier	-	-	0.32 kg
TH108-EB	Blank insert jaws	50 x 50 mm	0-16 mm	0.32 kg
TH108-EBG	Rubber insert jaws	50 x 50 mm	0-14 mm	0.33 kg
TH108-EBP	Pyramid insert jaws	50 x 50 mm	0-16 mm	0.29 kg
TH108-EBD	Diamond insert jaws	50 x 50 mm	0-16 mm	0.30 kg



TH108-GT

Jaw surfaces



TH108-B
Blank jaws
without counting



TH108-BG
Rubber coating
1 mm (NBR)



TH108-BP
Pyramids 1.2x45°,
hardened steel



TH108-BV
Tooth pitch 1.2 mm,
hardened steel



TH108-BW
Wave 5 mm,
hardened steel

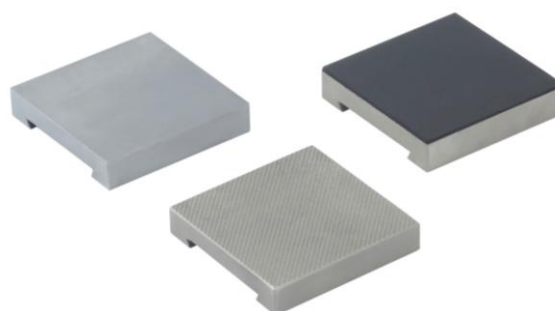


TH108-BD
Diamond coating
(synthetic)

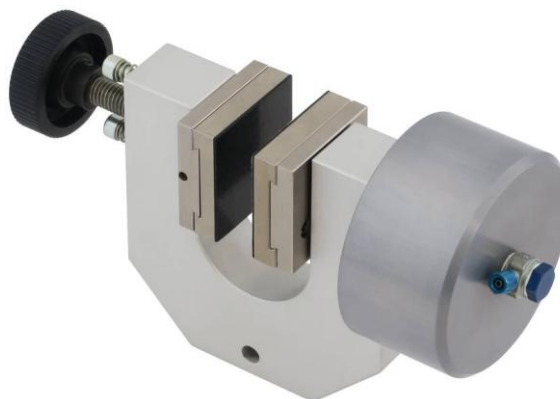
Jaws with different dimensions and surfaces available on request



TH108+BW100



TH108-EB + TH108-EBG + TH108-EBP

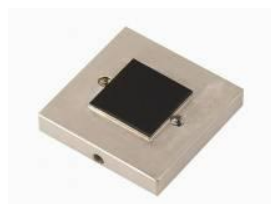


TH108+EBG

Customized solutions:



TH108-12 - Opening up to 60 mm



TH108-BG25x25



TH108-BP0.8x45 (small pyramids)

Pneumatic accessories:



TH205-1 Foot pedals

None locking: The jaws of the grip open by pressing the foot pedal and close after removing the foot from the pedal.

Scope of delivery: 1 pair of foot switches including tubes and fittings



TH205-2 Foot pedals

With locking function: The jaws of the grip open by pressing the foot pedal and remain opened after removing the foot from the pedal. The jaws close by pressing the pedal one more time.

Scope of delivery: 1 pair of foot switches including tubes and fittings



TH205-PR16bar Pressure regulator

Optional for TH205-1 or TH205-2

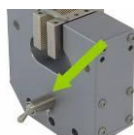
To adjust air pressure: 1-16 bar



TH205-3 Hand switches

With locking function: The jaws of the grip close by pulling the handle and remain closed. The jaws open by pushing the handle back.

Scope of delivery: 1 unit of hand switches including tubes and fittings



TH205-4-1/8" Hand switches

Pneumatic micro – hand switches, tubes and fittings, 1/8" connection

With locking function

The hand switches are directly mounted at the grips. 3/2 directional valve

Scope of supply: 2 hand switches including tubes and fittings



TH216 Silent compressor for laboratories, oil-lubricated, with pressure reducer

Max pressure 16 bar; 230 V/50 HZ; noise level: 38 dB(A)

Motor: 0.13 kW; displacement: 17 l/min; tank size 3.5 l

Dimensions: 340x290x340 mm (L x W x H); weight 18 kg

See also:

www.grip.de/pdf/TH205_Datasheet.pdf

www.grip.de/pdf/TH216_Datasheet.pdf

www.grip.de/G12