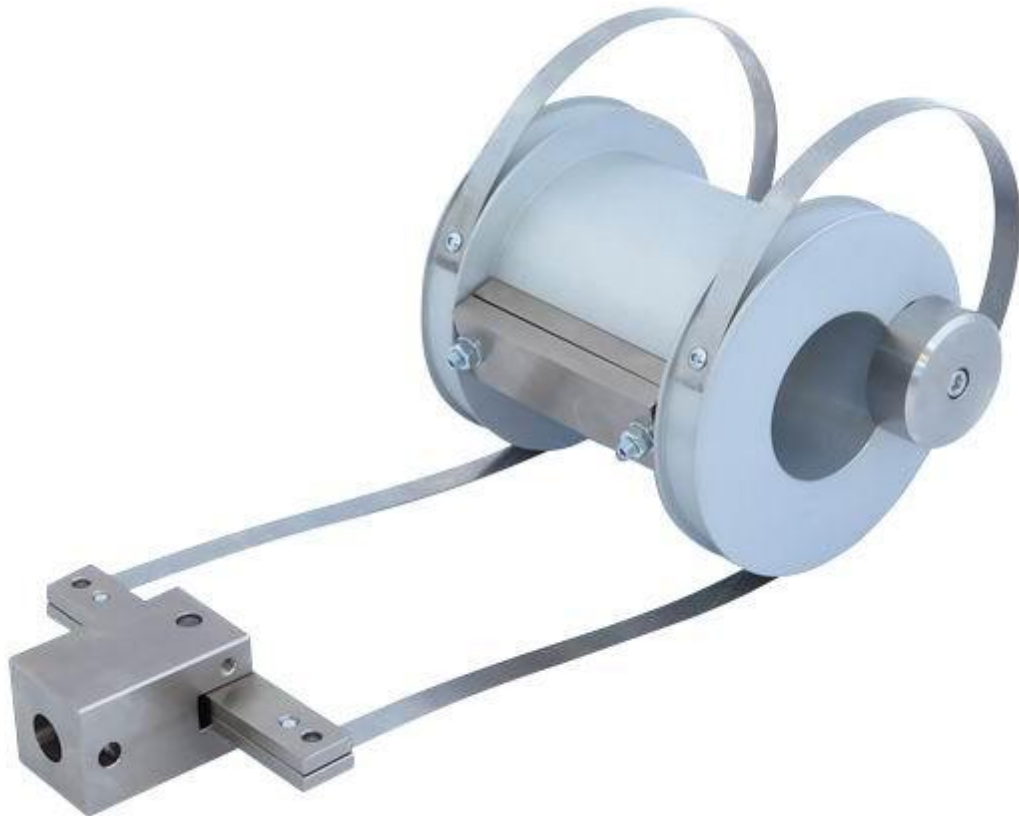
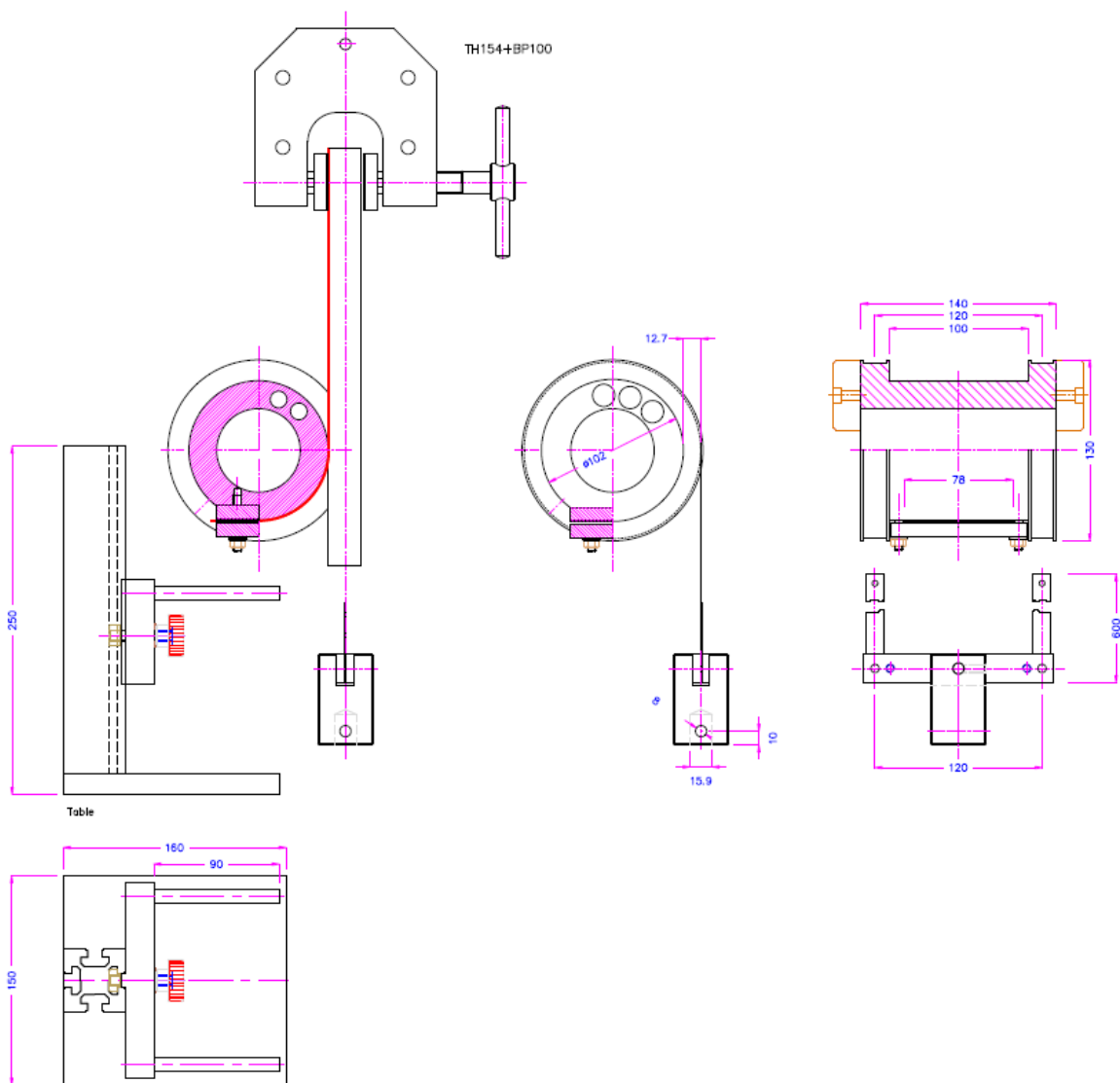


TH115 Climbing Drum Peel Test Fixture per ASTM-D1781 EN 2243 DIN 53295



Model	TH115-D100 EN2243 DIN53295 (diameter 100) TH115-D102 ASTM-D1781 (diameter 102 mm)
Description	<p>test peel resistance of adhesive bonds between</p> <p>This test method covers the determination of the peel resistance of adhesive bonds between: a sandwich of two layers of aluminum and polyethylene. The goal is to measure the average torque required to peel the two material.</p> <p>The fixture consists of a drum assembly, flexible loading straps mounted at the bottom of the stand, an upper self closing clamp to grip the specimen and a drum clamp to hold the outer skin against the face of the drum.</p> <p>During a test the loading straps pull on the drum assembly, forcing it to rotate and climb along the length of the aluminum panel. This motion peels the outer skin away from the core structure. The peel force is monitored by the load measurement system providing a measure of bond strength.</p>
Max Sample width	80mm
Max load	5kN
Weight	3kg
Material	Alu Steel
Surface	Eloxat Nickel
Standards	ASTM-D1781 EN2243 DIN53295

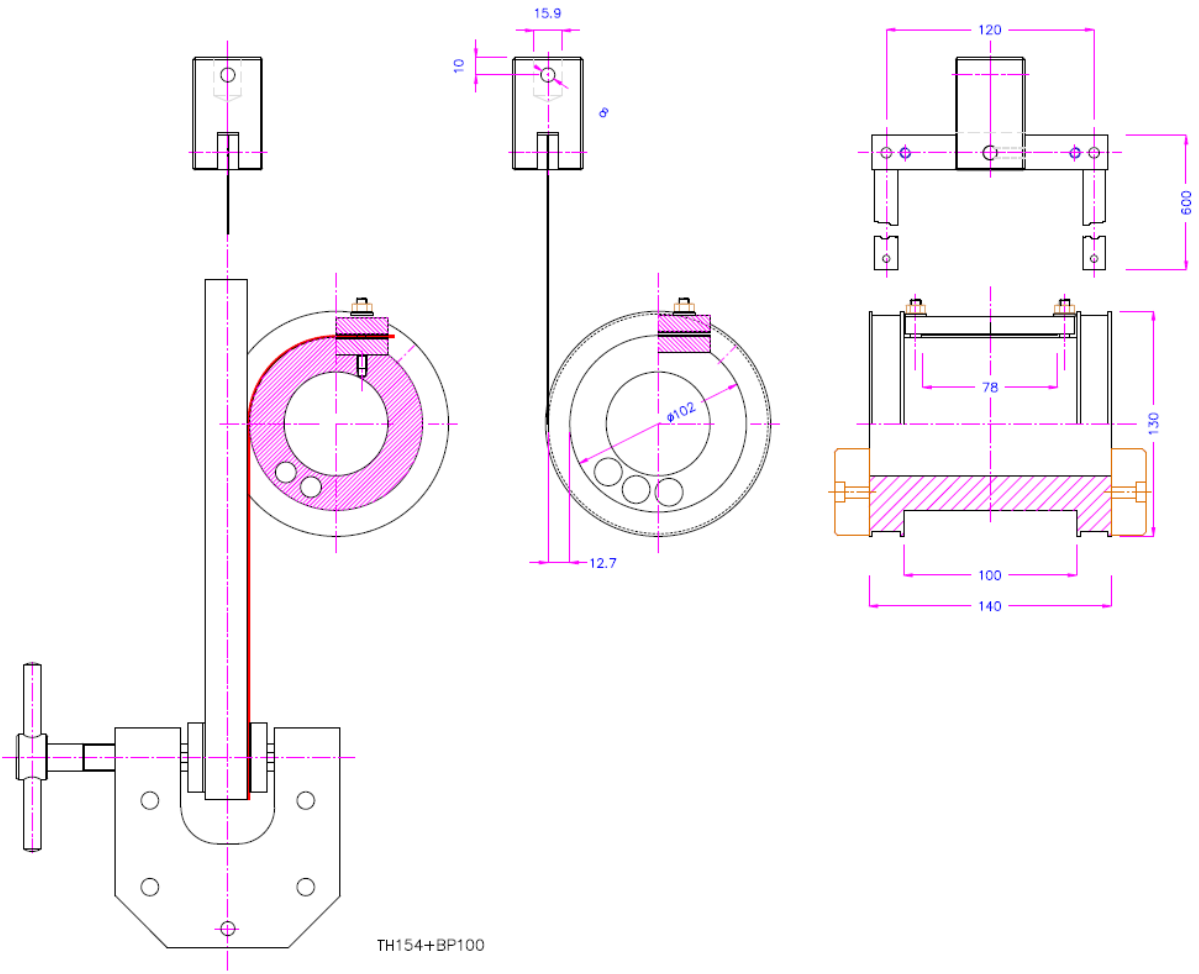
Adapter / coupling	Standard: Af15.9 mm cup with 8 mm pin Further connections on request
Ordering information	TH115-ASTM1781-102 102mm diameter TH115-EN2243-100 100mm diameter As upper grip to hold the sample we recommend: TH154+BP or TH240k or TH240g vice grip (one single grip) TH115-TB Table



TH115-D102-ASTM-D1781



TH115-tbl A adjustable table - helps to start the test





upper grip TH240k+BP100

upper grip TH7-1-100