

PNEUMATIC GRIP 30 kN

Strong pneumatic lever action grip.

A pneumatic cylinder in the grip produces 30 kN clamping force at 7 bar air pressure.

If needed, air pressure can be increased up to 16 bar by using

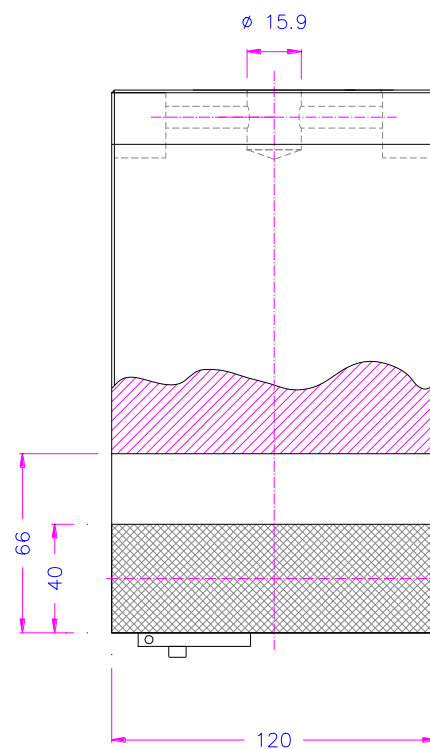
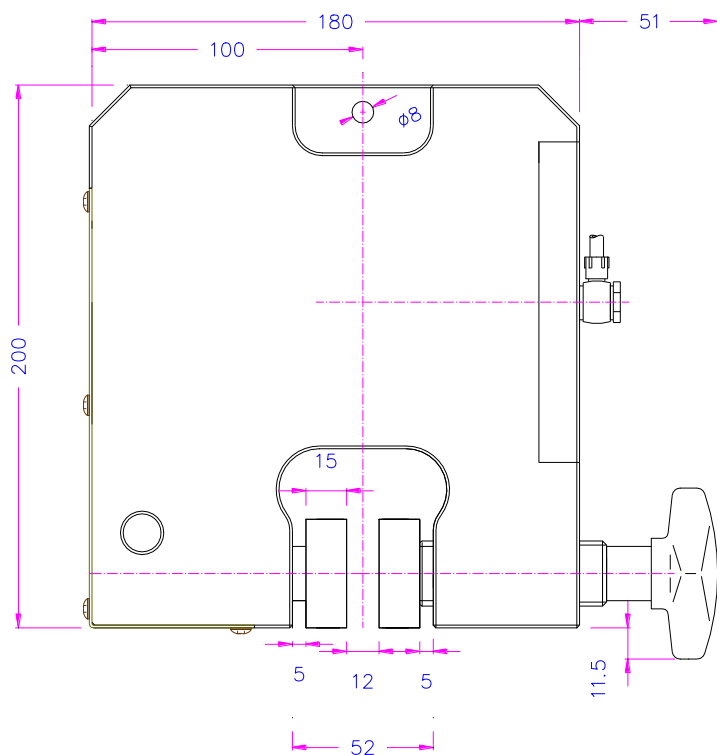
TH216 compressor (see Pneumatic accessories, page 5).

The counter jaw is adjusted by a screw handle and can be adjusted asymmetrically, when necessary.

TH126 grips are supplied in pairs, but can also be ordered as a single grip (0.5 pair).

Grips and jaws need to be ordered separately.

Item no.:	TH126
Clamping force:	30 kN/7 bar (60 kN/16 bar)
Temperature range:	0°C ... +70°C
	Further temperature ranges on request
Body:	Aluminum, anodized
Pneumatic connection:	1/8"
Weight:	10 kg each grip (without jaws)
Scope of delivery:	1 pair of grips (without jaws)



Jaws for TH126 Scope of delivery: 1 set = 4 jaws

Item no.	Surface	Clamping surface H x W	Opening [mm]	Weight per pair
TH126-B	Blank (smooth)	40 x 120 mm	0-12; 5-17; 10-22	1.08 kg
TH126-BG	Rubber-coated	40 x 120 mm	0-10; 3-15; 8-20	1.09 kg
TH126-BP	Pyramid (serrated)	40 x 120 mm	0-12; 5-17; 10-22	1.04 kg
TH126-BV	V jaw for round samples	40 x 120 mm	Ø 6-17; Ø 12-22	0.83 kg
TH126-BW	Wave	40 x 120 mm	0-12; 7-17; 12-22	1.02 kg
TH126-BD	Diamond grit	40 x 120 mm	0-12; 5-17; 10-22	1.08 kg
TH126-BW200	Wave	60 x 200 mm	0-12; 5-17; 10-22	3.61 kg
TH126-BW210	Wave	60 x 210 mm	0-12; 5-17; 10-22	3.76 kg

Jaw opening can be modified to customer's requirements in 1 mm increments depending on jaw type. Please indicate this in your order.

Jaws with other dimensions and surfaces are possible on request.

Jaw surfaces



TH126-B

Untreated blank steel without coating suitable for further modifications



TH126-BG

Rubber coating 1 mm thick (NBR)



TH126-BP

Pyramid serrated 1.2x45° Hardened steel



TH126-BV

V jaws for round samples with 1.2 mm pitch Hardened steel



TH126-BW

Wave width 5 mm Hardened steel



TH126-BD

Synthetic diamond grit

Examples for customized solutions



TH126-BP20x120
Pyramid (serrated jaws) 20 x 200 mm



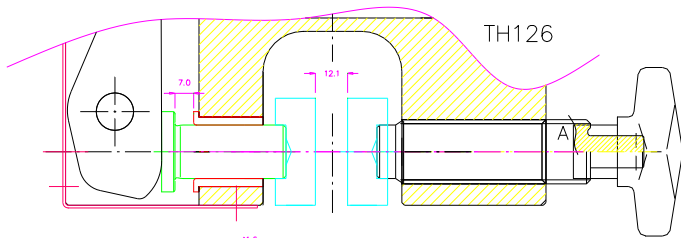
TH126-80x250-NK
Needle jaws, 80 x 250 mm



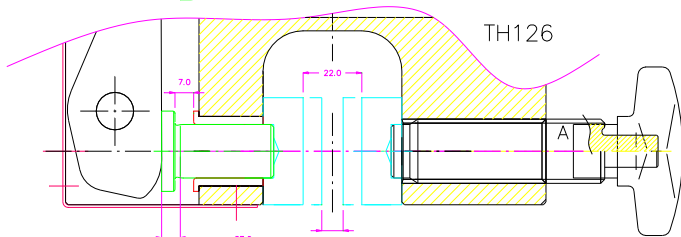
TH126-GT carrier
TH126-EBB (smooth) and TH126-EBP (serrated) insert jaws



TH126-BW210 210 x 60 mm
Perfect for use with textiles, leather paper, foils



Bolzen 41.6 standard opening 0-12

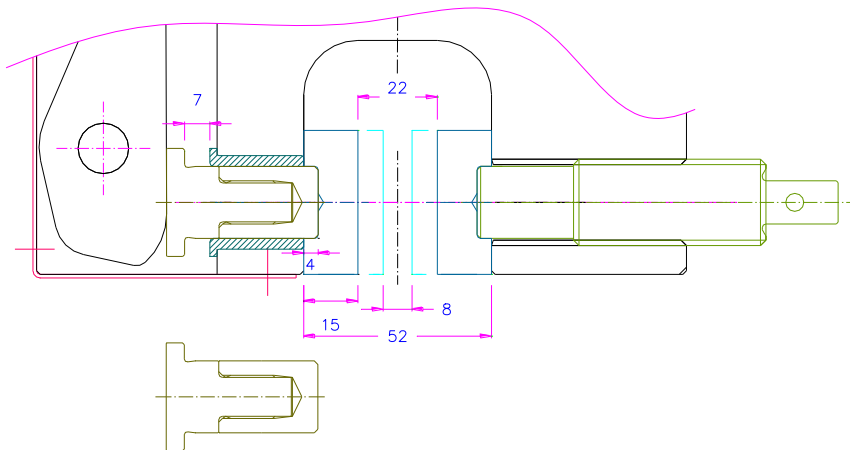


Bolzen 37 for 8-22 opening 8-22

Jaw opening can be modified by using different rods to 0-12 mm or 8-22 mm. Max. opening is 22 mm.

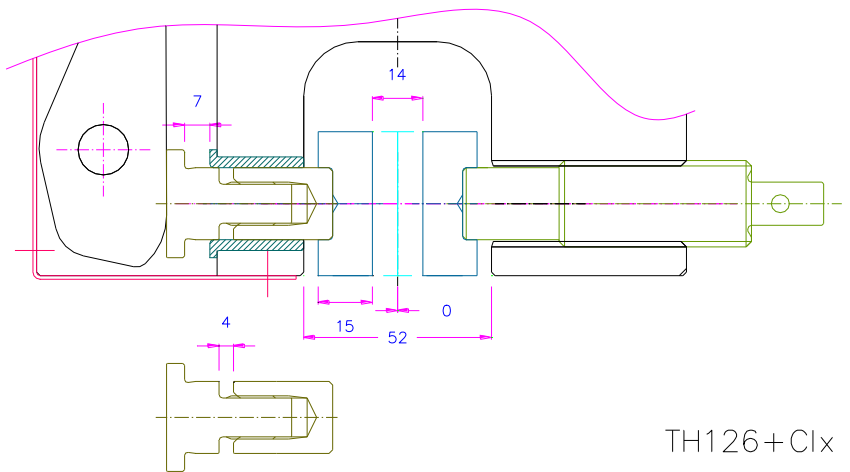
How to change rods

<https://youtu.be/8ONkw-tI034>



TH126-CLx

Alternatively, adjustable cylinder can be used to change start position of a pneumatic jaw



TH126+Clx

Videos



TH126+BP
<http://youtu.be/-h-osLsl7Dg>



Teflon-coated laminated membrane
<http://www.youtube.com/watch?v=MPnCUKgeJic>



Pet ribbon
<http://www.youtube.com/watch?v=AtlIFtkFXc0>



Rubber
<http://www.youtube.com/watch?v=l3928LeEDPw>



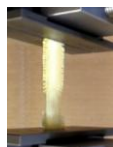
Felt tensile test under angle
<http://www.youtube.com/watch?v=GZg1XtvVmwg>



Carbon fiber sample 20x.2 mm
<http://www.youtube.com/watch?v=mNFhCrRaDgU>



Hard plastic sample test with TH126+BP at 5 bar
http://youtu.be/Iw4qYji_u-w



Textile test at 6600 N at 7 bar
<http://youtu.be/LSdCZf-JqR8>



TH126+BW200: Wave jaws 60 x 200 mm, test with carpet sample

Pneumatic accessories:**TH205-1 Foot pedals**

None locking: The jaws of the grip open by pressing the foot pedal and close after removing the foot from the pedal.

Scope of delivery: 1 pair of foot switches including tubes and fittings

**TH205-2 Foot pedals**

With locking function: The jaws of the grip open by pressing the foot pedal and remain opened after removing the foot from the pedal. The jaws close by pressing the pedal one more time.

Scope of delivery: 1 pair of foot switches including tubes and fittings

**TH205-PR16bar Pressure regulator**

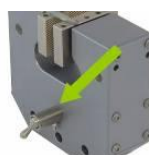
Optional for TH205-1 or TH205-2

To adjust air pressure: 1-16 bar

**TH205-3 Hand switches**

With locking function: The jaws of the grip close by pulling the handle and remain closed. The jaws open by pushing the handle back.

Scope of delivery: 1 unit of hand switches including tubes and fittings

**TH205-4-1/8" Hand switches with 1/8" connection**

With locking function (see TH205-3)

The hand switches are directly mounted at the grips. 3/2 directional valve

Scope of supply: 2 hand switches including tubes and fittings

If ordered together with grips, hand switches will be mounted directly on the grips.

**TH216 Silent compressor for laboratories, oil-lubricated, with pressure reducer**

Max pressure 16 bar; 230 V/50 HZ; noise level: 38 dB(A)

Motor: 0.13 kW; displacement: 17 l/min; tank size 3.5 l

Dimensions: 340x290x340 mm (L x W x H); weight 18 kg