

TH149 Pneumatic grip 2.4 kN

Symmetric clamping. Dual-action for self centring of the specimen which allows its quick and easy loading.

Each grip is supplied with a specimen alignment device, which can be mounted directly on the jaws.

Ordering information

TH149 are supplied in pairs, but can also be ordered as single grip (0.5 pair).
Jaw faces need to be ordered separately.



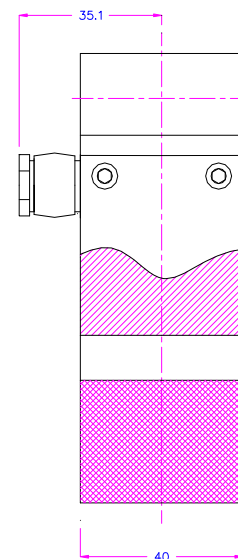
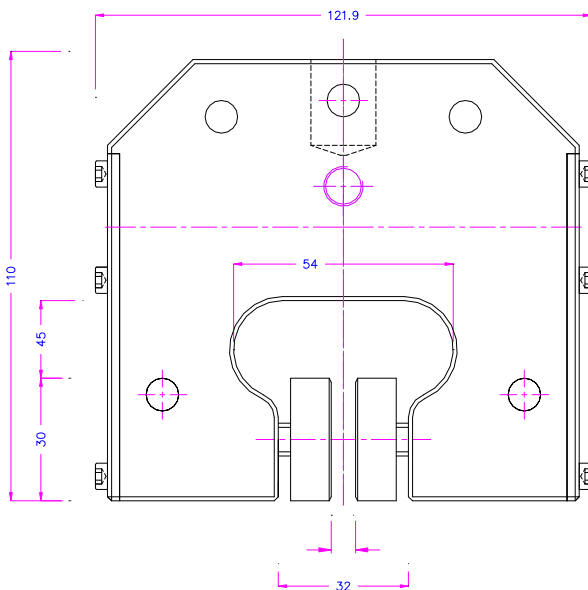
Item number	TH149
Clamping force	2.4 kN at 7bar
Temperature range	0°C - +70°C Other temperature ranges on request
Body	Aluminium
Pneumatic connection	Internal thread coupling 1/8"
Weight	1.21kg each grip (without jaws)

Jaws for TH149: Scope of delivery 1 set = 4 jaws

Item No.	Surface	Clamping surface H x W	Opening	Weight per pair
TH149-B	Blank jaws	30 x 50mm	0 – 7mm*	0.22kg
TH149-BG	Rubber jaws	30 x 50mm	0 – 5mm*	0.22kg
TH149-BP	Pyramid jaws	30 x 50mm	0 – 7mm*	0.22kg
TH149-BV	V-jaws	30 x 40mm	4 – 7mm Ø*	0.18kg
TH149-BW	Wave jaws	30 x 50mm	0 – 7mm*	0.20kg
TH149-BD	Diamond jaws	30 x 50mm	0 – 7mm*	0.22kg

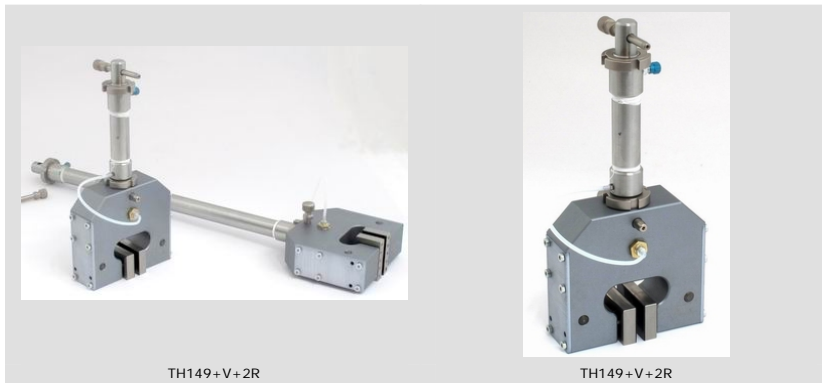
* Other opening widths (up to 12 mm) and jaw faces with differing dimensions and surface coatings are also available on request

	Blank jaws • Suitable for own further treatments • Steel-blanks without coating
	Rubber jaws • 1 mm rubber coating (NBR) • Nickel-plated
	Pyramid jaws • Pyramids 1.2x45 • Hardened steel 58HRC • Nickel-plated
	V-jaws • For all kinds of round samples • Tooth pitch 1.2 mm • Hardened steel 58HRC • Nickel-plated
	Wave jaws • For flexible materials • Wave 5 mm • Hardened steel 58HRC • Nickel-plated
	Diamond jaws • Clamping surface coated with synthetic diamonds • Nickel-plated



TH149

Examples for special requirements solutions



TH149+V+2R

TH149+V+2R



TH149-BG20x50
Height 20 mm x Width 50 mm

TH149-BG30x40
Height 30 mm x Width 40mm

TH149-BG25x25
Height x Width 25 mm

TH149-BP30x25-0.7x45
Height 30mm x Width 200 mm – small pyramids 0.7x45

TH149-GT
Inset jaws carrier

TH149-EBP
Pyramid inset jaws

Accessories:



TH205-1

2 pneumatic foot switches, tubes and fittings

None locking: The jaws of the grip open by pressing the foot pedal and close after removing the foot from the pedal.

Scope of delivery: 1 pair of foot switches including tubes and fittings



TH205-2

2 pneumatic foot switches, tubes and fittings

With locking function: The jaws of the grip open by pressing the foot pedal and remain opened after removing the foot from the pedal. The jaws close by pressing the pedal one more time.

Scope of delivery: 1 pair of foot switches including tubes and fittings



TH205-. +PR

Optional for TH205-1 or TH205-2

Pressure regulator

To adjust air pressure: 1-10 bar



TH205-3

1 unit of pneumatic hand switches, tubes and fittings

With locking function: Handle with 2 positions. The jaws of the grip close by pulling the handle and remain closed. The jaws open by pushing the handle back.

Scope of delivery: 1 unit of hand switches including tubes and fittings



TH205-4

Pneumatic micro – hand switches, tubes and fittings

With locking function: The hand switches are directly installed at the grips (only for 1/8" couplings), 3/2 directional valve

Scope of supply: 2 hand switches including tubes and fittings



TH216

Silent compressor appropriate for laboratories

Max pressure: 16 bar; noise level: 45dB(A)

Motor 400 watt; displacement 25 l/min

With pressure reducer / water trap

Dimensions: 382x300x334 mm (L x W x H), tank size 4 litres, Weight ~ 23 kg