

TENSILE STRENGTH TEST FIXTURES

to test tension and tensile adhesion properties perpendicular to surface according to ASTM C297, ASTM D1623B, ASTM D1037 (Fig. 8), DIN 52365, EN 319, EN 1607, EN 12004.

Max. load:	20 kN
Coupling:	Af159 or Af20. Further couplings on request.
Carrier and inserts:	Aluminium, anodized
Cardan adapter:	Steel, nickel-plated
Temperature range:	0 ... +70°C
Scope of supply:	1 pair of carriers* Inserts have to be ordered separately



*TH16-50 carriers include 1 cardan adapter THS327-Af159 or THS327-Af20
TH16-50-2 carriers include 2 cardan adapters THS327-Af159 or THS327-Af20

Item no.:	ASTM C297	ASTM D1623B	ASTM D1037 (Fig. 8)	DIN 52365	EN 319	EN 1607	EN 12004	Insert block surface size:	Weight per part:
Carriers									
TH16-50			x				x		1.37 kg
TH16-50-2	x	x	x	x	x	x			1.84 kg
Insert blocks									
TH16-50-E25.4	x	x						25.4x25.4 mm	0.25 kg
TH16-50-E50				x	x	x	x	50x50 mm	0.39 kg
TH16-50-E50.8	x		x					50.8x50.8 mm	0.41 kg
TH16-50-E100						x		100x100 mm	0.84 kg

Carriers

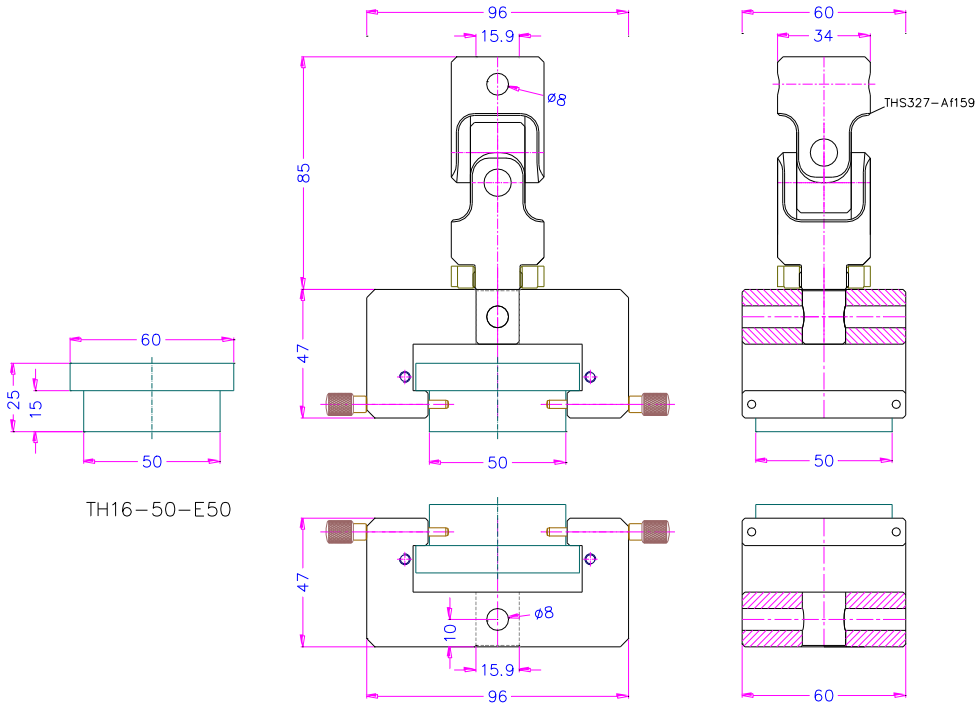


TH16-50

Insert blocks

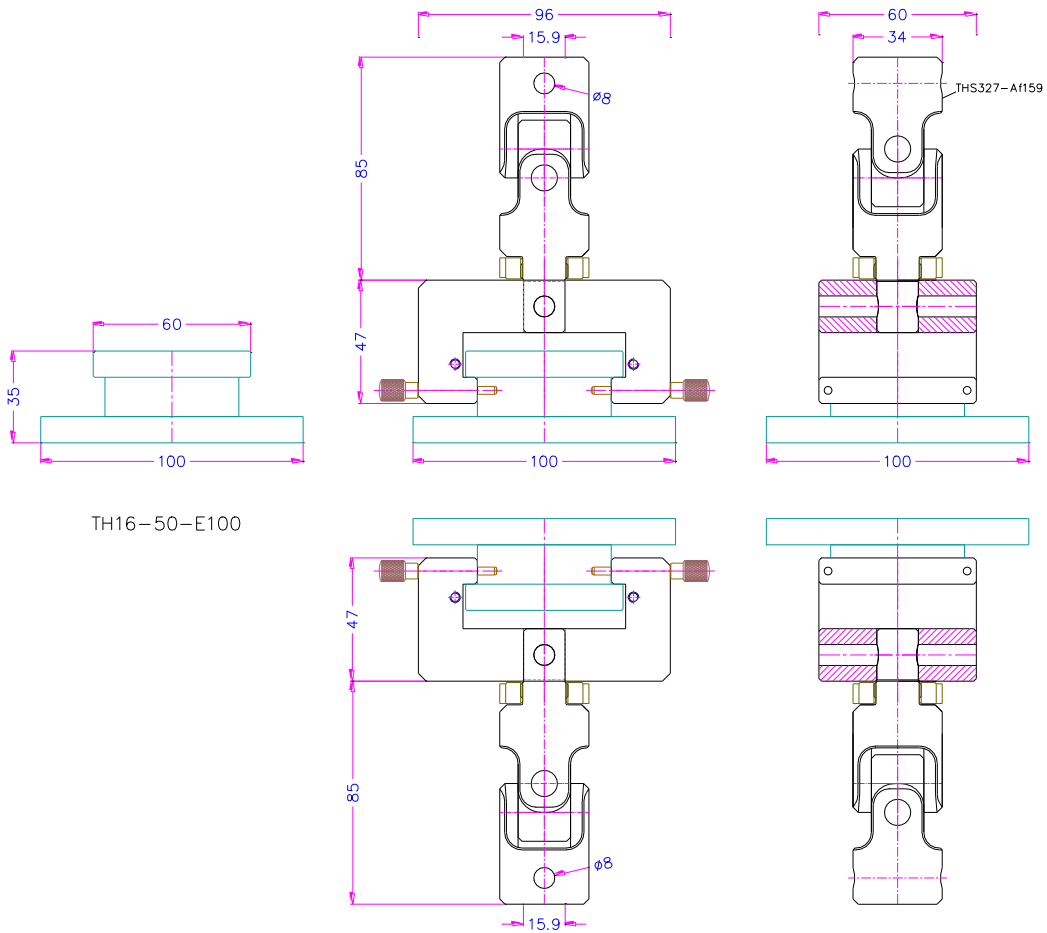


TH16-50-E



TH16-50-E50

TH16-50 + TH16-50-E50



TH16-50-E100

TH16-50-2 + TH16-50-E100

Examples for customized TH16 fixtures:



TH16-105-Am25



TH16-252-Af318



TH16-S18-Am32 according to ASTM D143 to test small clear specimens of timber



TH16-S19-DSC