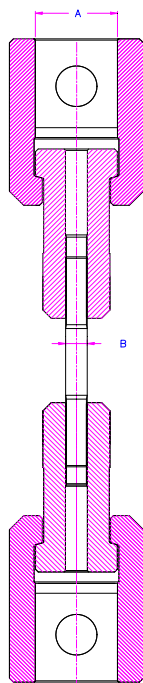


Thread Head Grip

Standard grip for testing threaded fasteners such as screws, bolts, studs, etc.

Testing of full threaded studs



TH179-A-EB



TH179-318-EM12
Standard threaded insert form
for all insert sizes except of TH179-60-Ex



TH179-60-SGM12
TH179-60-Ex threaded inserts for all thread sizes
up to M20 are supplied in the special SGM form

Insert holder Item number	A: coupling	Max force	Threaded insert Item number	B: thread Ø
TH179-159	15.9 mm	20 kN	TH179-159-Ex*	3 – 8 mm
TH179-20	20 mm	20 kN	TH179-159-Ex*	3 – 8 mm
TH179-30	30 mm	50 kN	TH179-30-Ex	3 – 16 mm
TH179-318	31.8 mm	50 kN	TH179-318-Ex*	3 – 16 mm
TH179-32	32 mm	50 kN	TH179-318-Ex*	3 – 16 mm
TH179-36	36 mm	50 kN	TH179-318-Ex*	3 – 16 mm
TH179-38	38 mm	50 kN	TH179-318-Ex*	3 – 16 mm
TH179-40	40 mm	100 kN	TH179-40-Ex	3 – 18 mm
TH179-40S2	40 mm	100 kN	TH179-40S2-Ex	3 – 22 mm**
TH179-50	50 mm	200 kN	TH179-50-Ex	3 – 22 mm
TH179-60	60 mm	250 kN	TH179-60-Ex	3 – 28 mm
TH179-70	70 mm	400 kN	TH179-70-Ex	3 – 32 mm

*Inserts for TH179-159+20 and TH179-318 till 38 are identical

**S2 version: special holder and insert can be used to test threaded studs up to 22 mm Ø

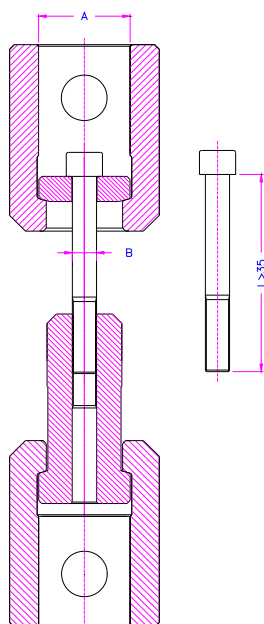
Ordering information

TH179 holders and inserts are supplied as a pair, but can also be ordered separately (0.5 pair).

Testing of long bolts and screws

Item-No.: TH179-A-EPB

A = coupling size
B = thread Ø, according to customer requirements



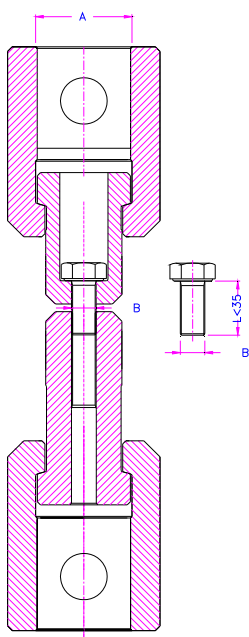
Washer

TH179-A-EPB

Testing of short bolts and screws

Item-No.: TH179-A-EKB

A = coupling size
B = thread Ø, according to customer requirements



Insert

TH179-A-EKB

Appendix



TH179 holder and insert weights:

Insert holder	Weight
TH179-159	83 g
TH179-20	108 g
TH179-30	490 g
TH179-318	570 g
TH179-32	554 g
TH179-3618	710 g
TH179-38	693 g
TH179-40	820 g
TH179-50	1857 g
TH179-60	4375 g

Threaded inserts for TH179-159	Weight
TH179-159-EM3	30 g
TH179-159-EM4	28 g
TH179-159-EM5	27 g
TH179-159-EM6	24 g
TH179-159-EM8	22 g
TH179-159-EM10	16 g

Threaded inserts for TH179-318	Weight
TH179-318-EM3	245 g
TH179-318-EM4	245 g
TH179-318-EM5	245 g
TH179-318-EM6	245 g
TH179-318-EM8	245 g
TH179-318-EM10	235 g
TH179-318-EM12	215 g
TH179-318-EM14x2	200 g
TH179-318-EM16	175 g
TH179-318-E1/4	252 g
TH179-318-E5/8	175 g

Threaded inserts for TH179-50	Weight
TH179-50-EM5	860 g
TH179-50-EM6	845 g
TH179-50-EM8	842 g
TH179-50-EM10	833 g
TH179-50-EM12	814 g
TH179-50-EM14	731 g
TH179-50-EM16	760 g
TH179-50-EM18	788 g
TH179-50-EM20	690 g

Threaded inserts for TH179-60	Weight
TH179-60-EM20	1554 g
TH179-60-EM24	1500 g