

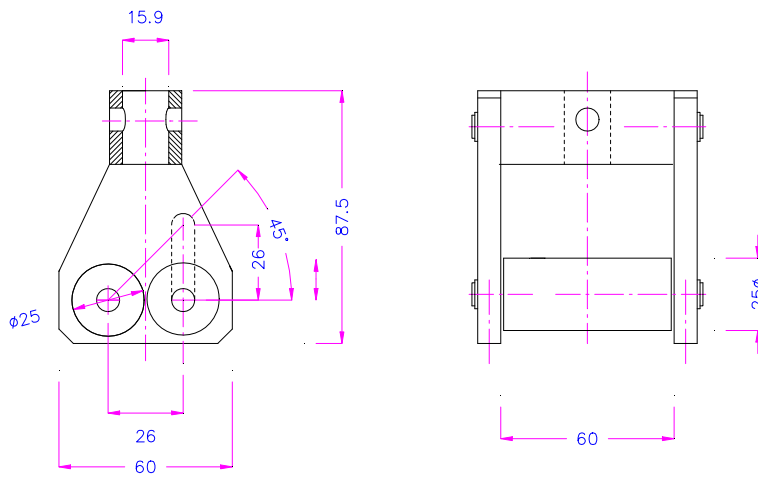


TH192-25

Rollenschälversuch
nach DIN EN
1464

2 Rolle
höhenverstellbar

Lieferumfang: 1
Spannzeug

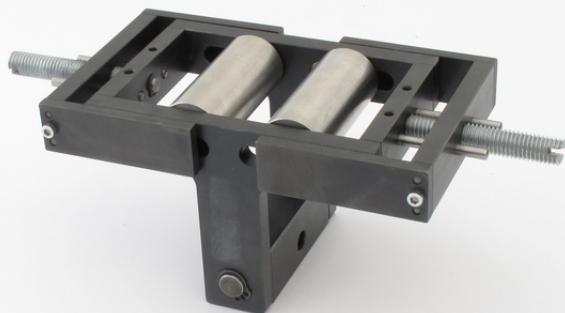


10 kN
E DIN VDE 0472-633 (VDE 0472 Teil 633) ; 1999-12

TH192-25

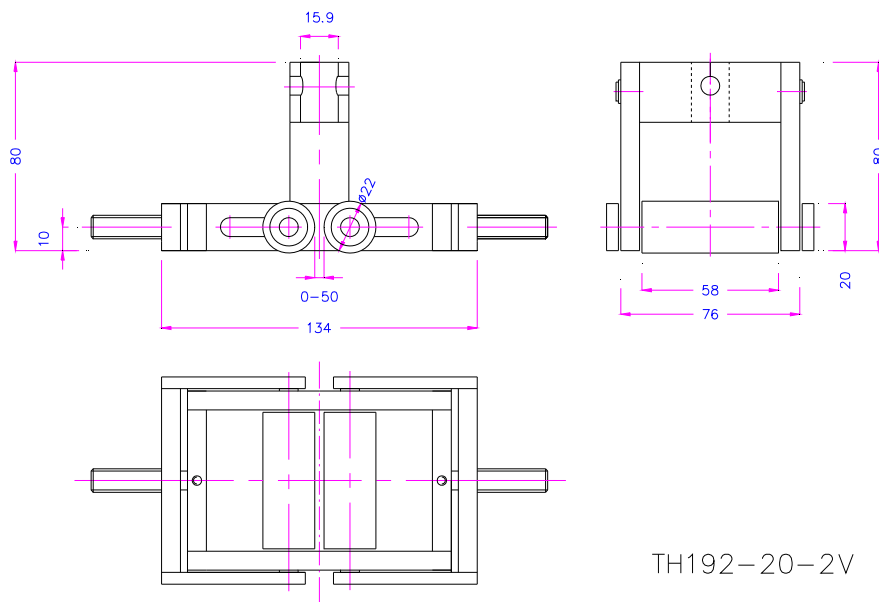
TH192-25

Rollen-
Durchmesser:
25mm
lichte Weite :
60mm



TH192-20-2V

2 Rollen
einstellbar 20mm
Durchmesser



TH192-20-2V

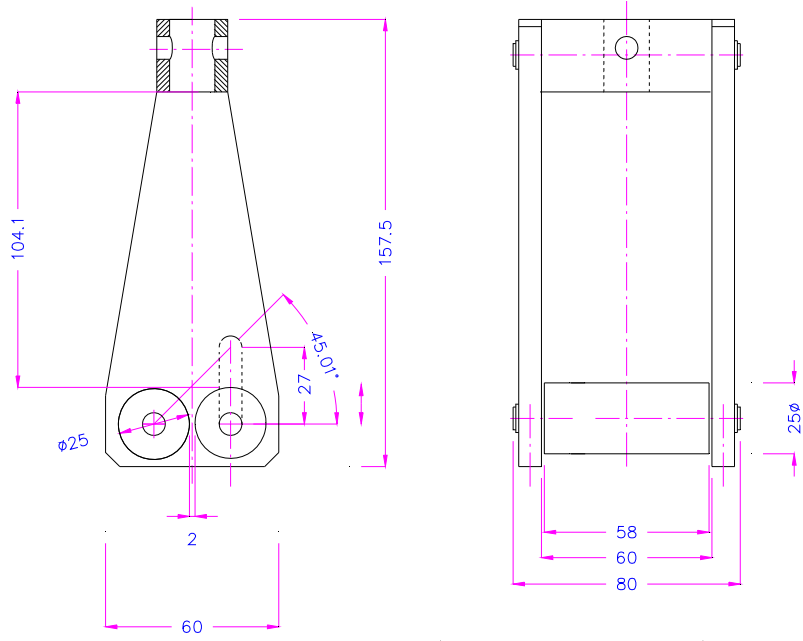
Sonderversionen



TH192-25-
H100

Special version

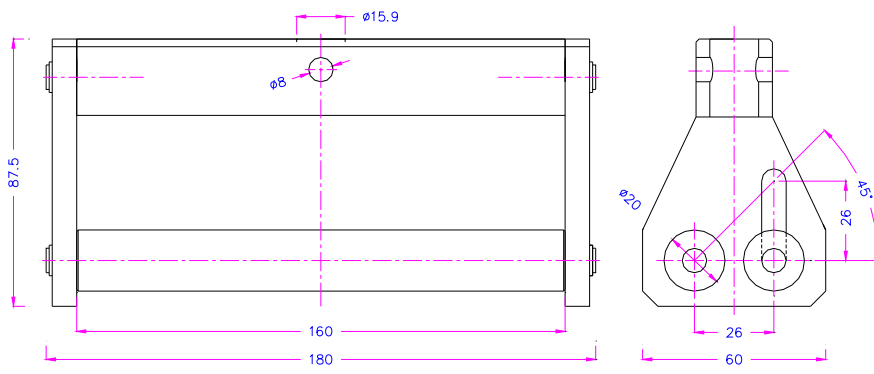
Roller 25mm
Height between
roller and adapter
100mm



TH192-25-2-100

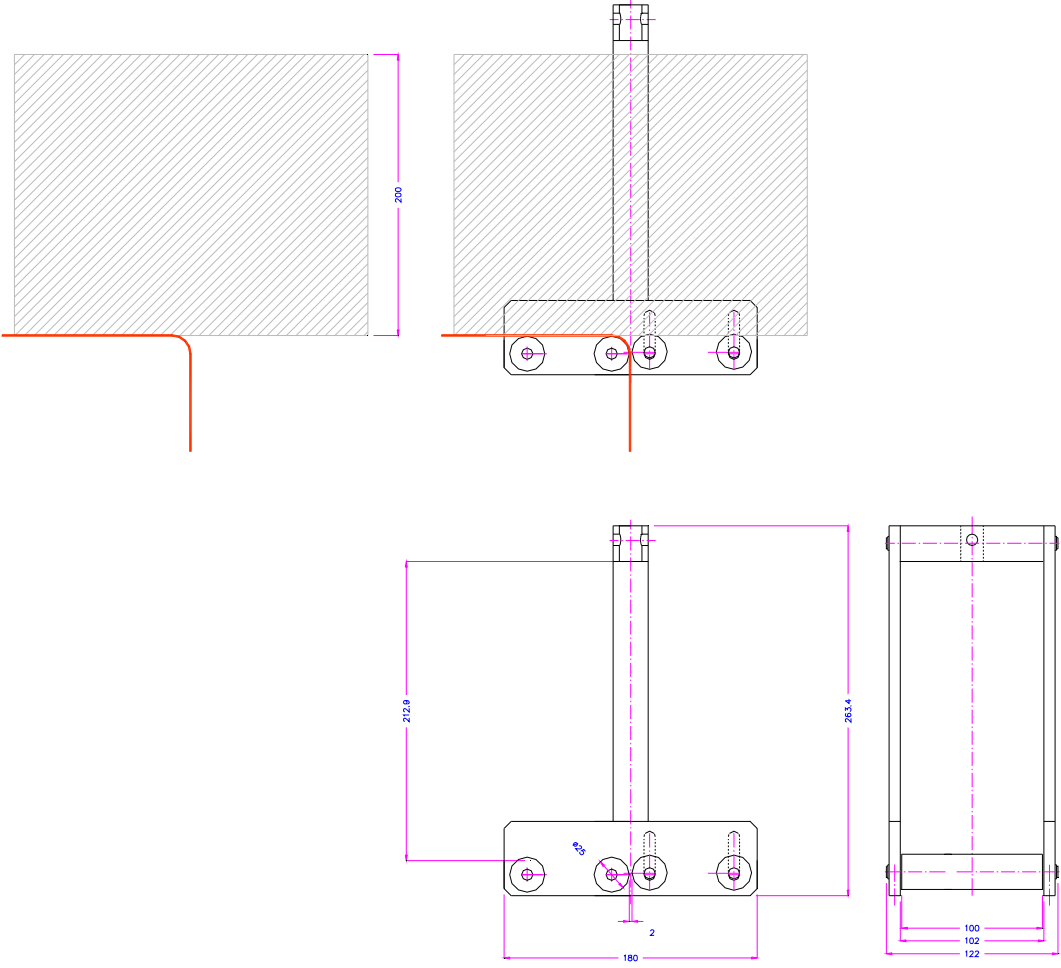


TH192-20-W160
 Special version
 160mm wide
 roller 20mm



TH192-20-26-W160

Abzug von einem Schaumkörper



TH192-25-2-200-100 4R



11.6.2016MT