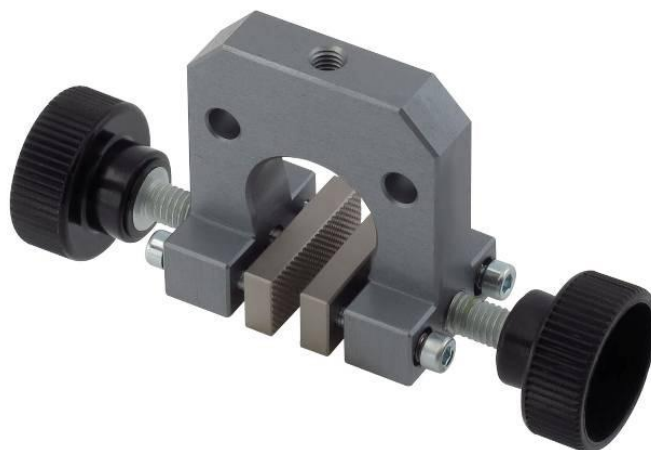


### TH227 Small vise grip

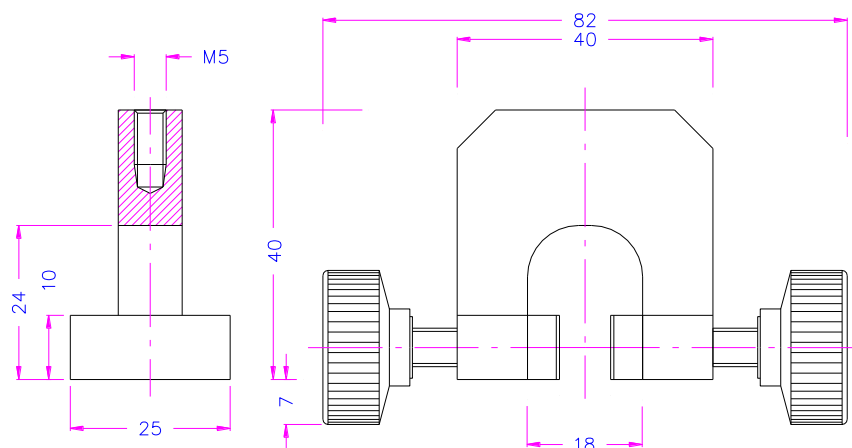
- Applicable for packaging materials, paper, plastic foils, wires, yarns etc
- Tensile force: 100 N
- Opening: 0-8 mm (depending on jaws)
- Temperature range 0°C – 130°C (depending on jaw type)  
Other temperature ranges on request
- Adapter/Coupling: M5 internal thread  
Other couplings possible with additional adapters
- Body: anodized aluminium
- Weight 60 gram per item (without jaws)
- Scope of delivery: 1 pair (without jaws)



#### Jaws for TH227: Scope of delivery 1 Set = 4 jaws

Item number	Surface	Clamping surface H x W	Opening	Weight / per pair
TH227-B25	Blank jaws	10 x 25 mm	0 – 8 mm	18 gram
TH227-BG25	Rubber jaws	10 x 25 mm	0 – 6 mm	19 gram
TH227-BP25	Pyramid jaws	10 x 25 mm	0 – 8 mm	17 gram
TH227-BW25x25	Wave jaws	25 x 25 mm	0 – 6 mm	48 gram
TH227-BD25	Diamond jaws	10 x 25 mm	0 – 8 mm	18 gram
TH227-B50	Blank jaws	10 x 50 mm	0 – 6 mm	46 gram
TH227-BG50	Rubber jaws	10 x 50 mm	0 – 4 mm	48 gram
TH227-BP50	Pyramid jaws	10 x 50 mm	0 – 6 mm	43 gram
TH227-BW50x25	Wave jaws	25 x 50 mm	0 – 6 mm	100 gram
TH227-BD50	Diamond jaws	10 x 50 mm	0 – 6 mm	46 gram
TH227-B100	Blank jaws	10 x 100 mm	0 – 6 mm	92 gram
TH227-BG100	Rubber jaws	10 x 100 mm	0 – 4 mm	95 gram
TH227-BP100	Pyramid jaws	10 x 100 mm	0 – 6 mm	86 gram
TH227-BD100	Diamond jaws	10 x 100 mm	0 – 6 mm	92 gram

Jaws with other dimensions and surfaces on request



#### Blank jaws

- Suitable for own further treatment
- Steel-blanks without coating

#### Rubber jaws

- 1mm rubber coating (NBR)
- Nickel plated

#### Pyramid jaws

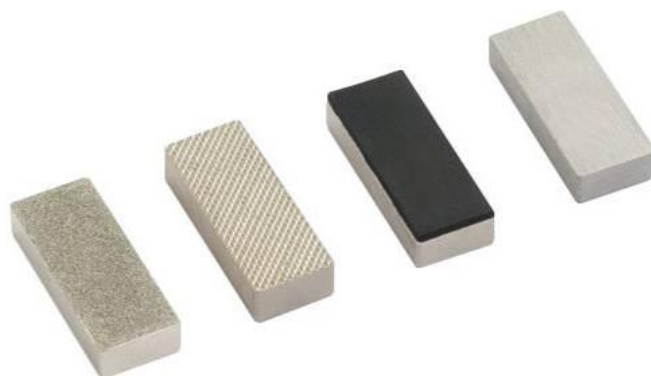
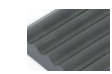
- Pyramids 0.8x45°
- Hardened steel 58HRC
- Nickel plated

#### Wave jaws

- For flexible materials
- Wave 5 mm
- Hardened steel 58 HRC

#### Diamond jaws

- Nickel-plated
- Clamping surface coated with synthetic diamonds
- Nickel plated



TH227

Examples for other versions and custom built solutions:



TH227+Bw30-AF159-A4 stainless steel 17% Chrome



TH227-S46+BP (opening 46 mm)



TH227-+BP+DIN6332-M6



B25 B50 B80 B100



TH227-BLC-R5 - Radius 5 mm



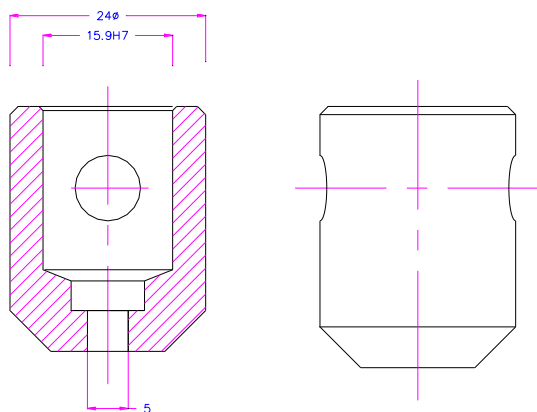
TH227-BW25x25

**Accessories:**



**THS637-159-Km5**

Adapter female 15.9/8 (5/8")  
To fix on TH227 with a M5 screw



THS637-159-Km5

