

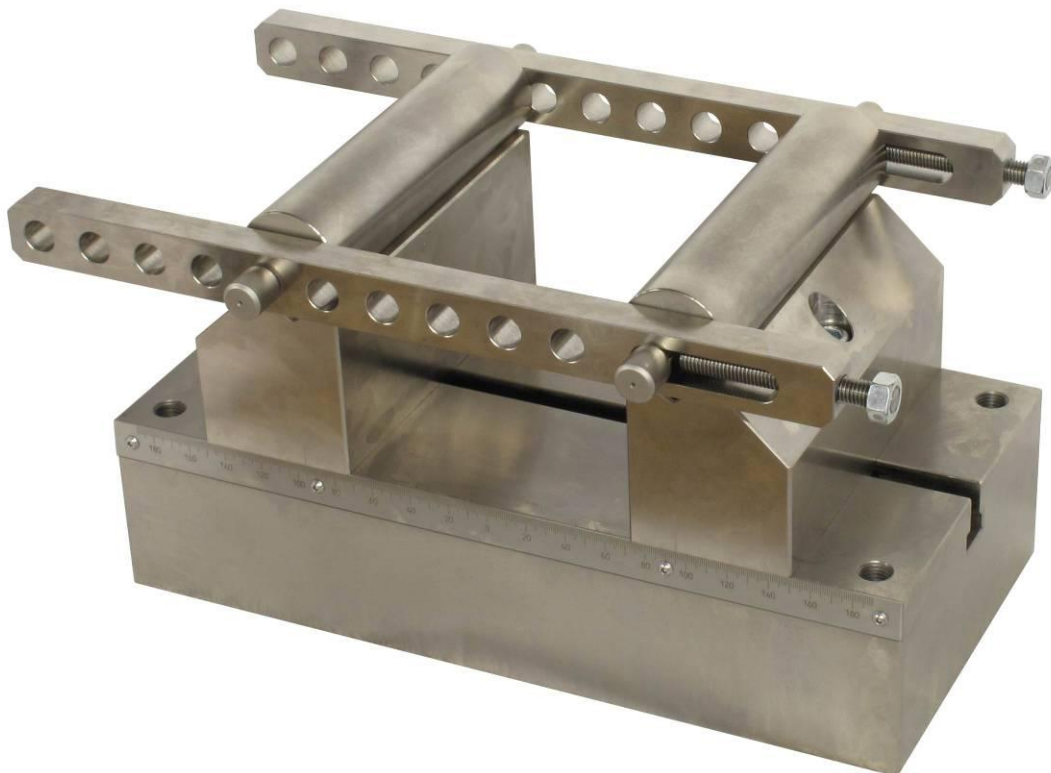
THS22St-406-W200-AFM20x1 ARB

3 point bending fixture like figured
Bending device according ASTM E 190 and ASTM E 290

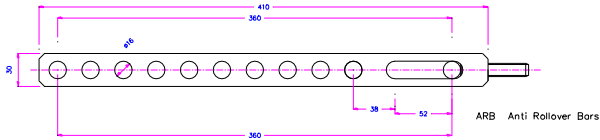
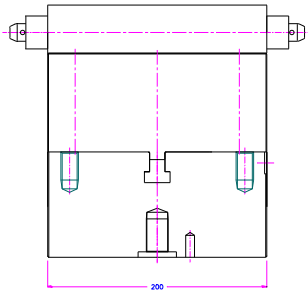
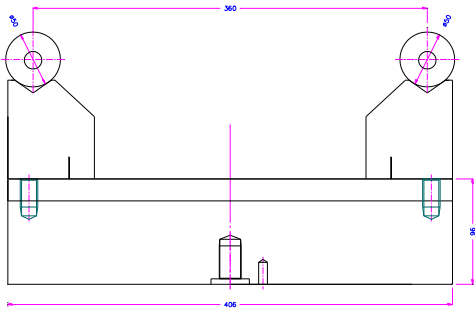
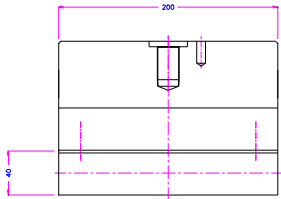
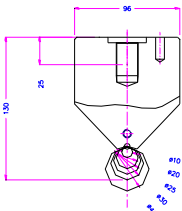
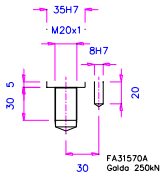
With Anti Rollover Bars

Base 406x200mm
Distance of lower supports up to 360 mm.
Rollers diameter $d = 50$ mm.
Width of rollers = 200 mm.
Max. load = 250 kN
upper roller : Diameter = 10;20;25;30;40

Steel nickel coated







250kN 58 HRC Nickel

TH22St-406-W200-AfM20x1-ARB

