

**TH23-AL Aluminum platen**

- For soft samples, cardboards, plastics etc.
- Aluminum anodized
- Temperature range: -70°C - +180°C
- Max capacity depends on the size of coupling

**Ordering information**

Scope of delivery: 1 pair

Item number	Diameter	Coupling	Weight / each platen
TH23-56-B-AL	56 mm	B*	~0.1kg
TH23-96-B-AL	96 mm	B*	~0.3kg
TH23-116-B-AL	116 mm	B*	~0.4kg
TH23-156-B-AL	156 mm	B*	~0.6kg
TH23-196-B-AL	196 mm	B*	~1.2kg
TH23-246-B-AL	246 mm	B*	~1.5kg
TH23-296-B-AL	296 mm	B*	~3.3kg

Platens with other dimensions and surfaces on request



**TH23-St Steel platen**

- For hard materials, steel, plastics, stone etc.
- Hardened steel 58 HRC, manganese phosphated
- Temperature range: 0°C - +350°C
- Nickel plated: -70°C - +350°C (on request)
- Max capacity depends on the size of coupling

**Ordering information**

Scope of delivery: 1 pair

Item number	Diameter	Coupling	Weight / each platen
TH23-56-B-St	56 mm	B*	~0.3kg
TH23-96-B-St	96 mm	B*	~0.7kg
TH23-116-B-St	116 mm	B*	~1.1kg
TH23-156-B-St	156 mm	B*	~1.6kg
TH23-196-B-St	196 mm	B*	~4.0kg
TH23-246-B-St	246 mm	B*	~4.3kg
TH23-296-B-St	296 mm	B*	~9.0kg
TH23-346-B-St	346 mm	B*	-

Platens with other dimensions and surfaces on request

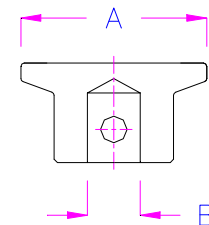


**Description of Item number: TH23-A-B-C**

**A** Diameter of platen [mm] 56, 96, 116, 156,196...etc

**B\*** Coupling: Female [mm] 15.9, 19.1, 20, 30, 31.8, 32, 36, 40 etc (Adapter) Male [mm] Am15.8, Am20, Am31.7 etc

**C** Material: AL = Aluminum St = Steel



**TH23 Platens are rigid platens. For self centring platens see THS223**

TH23 and THS223 platens can be combined.

Ordering Information for combination rigid + self centring platen: 0.5 pair TH23 + 1x THS223

Examples for other versions and special solutions



TH23-116-159-AL with additional adapter  
THS626-158-158



TH23-156-38-Ni: Nickel plated steel platen  
Temperature range -70°C - +350°C



TH23-156-Am20-St



TH23-196-30-St-M8  
Steel platen with M8 thread



TH23-20-Am12-St



TH23-56-Af159-V2A