

TH232 Pneumatic grip

Clamping force: 16 kN /7 bar (36 kN /16 bar)

Standard temperature range: 0 °C - +70°C
with Viton: 0°C - +70°C

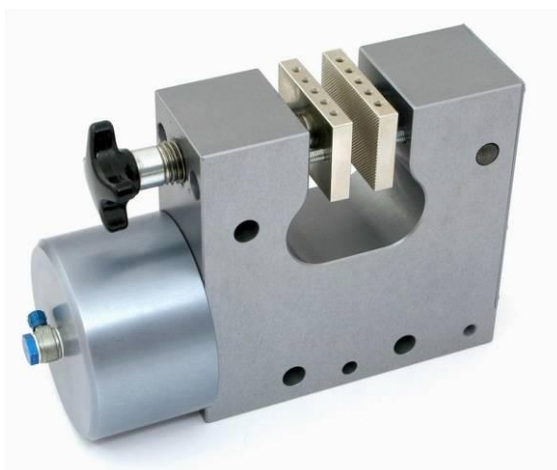
Body made of aluminum

Pneumatic connection: Internal thread 1/8"

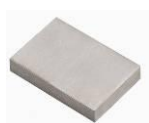
Weight ~4.5 kg each without jaws

adjustable opening 0-10 mm ... 20-30 mm

Scope of delivery: 1 pair



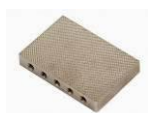
Jaws for TH232: Scope of delivery: 1 Set = 4 jaws



TH232-B Blank (smooth) jaws
- Suitable for own further treatments
- Steel-blanks without coating



TH232-BG Rubber coated jaws
- 1 mm rubber coating (NBR)
- Nickel-plated



TH232-BP Pyramid jaws (serrated)
- Pyramids 1.2x45
- Hardened steel 58HRC
- Nickel-plated°



TH232-BV V-jaws
- For all kinds of round samples
- Tooth pitch 1.2 mm
- Hardened steel 58HRC
- Nickel-plated



TH232-BW Wave jaws (corrugated)
- For flexible materials
- Wave 5 mm
- Hardened steel 58HRC
- Nickel-plated



TH232-BD Diamond coated jaws
- Clamping surface coated with synthetic diamonds D91 (170/200 mesh)
- Nickel-plated

Item number	Surface	Clamping surface H x W	Opening	Temperature range	Weight 1 pair
TH232-B	Blank jaws	40 x 60 mm	0-10 mm*	+20 °C - +180°C	0.35 kg
TH232-BG	Rubber coated jaws	40 x 60 mm	0-10 mm*	- 70 °C - +70°C	0.36 kg
TH232-BP	Pyramid jaws	40 x 60 mm	0-10 mm*	- 70 °C - +180°C	0.33 kg
TH232-BV4	V-jaws	Height 40 mm	4-10 mm Ø	- 70 °C - +180°C	0.35 kg
TH232-BV6	V-jaws	Height 40 mm	6-10 mm Ø	- 70 °C - +180°C	0.35 kg
TH232-BW	Wave jaws	40 x 60 mm	0-10 mm*	- 70 °C - +180°C	0.40 kg
TH232-BD	Diamond coated jaws	40 x 60 mm	0-10 mm*	- 70 °C - +180°C	0.35 kg
TH232-B100	Blank jaws	40 x 100 mm	0-10 mm*	+20 °C - +180°C	0.72 kg
TH232-BG100	Rubber coated jaws	40 x 100 mm	0-10 mm*	- 70 °C - +70°C	0.74 kg
TH232-BP100	Pyramid jaws	40 x 100 mm	0-10 mm*	- 70 °C - +180°C	0.69 kg
TH232-BW100	Wave jaws	40 x 100 mm	0-10 mm*	- 70 °C - +180°C	0.66 kg
TH232-BD100	Diamond coated jaws	40 x 100 mm	0-10 mm*	- 70 °C - +180°C	0.72 kg
TH232-BW200	Wave jaws	60 x 200 mm	0-10 mm*	0 °C - +180°C	3.00 kg

*Rods for openings 10-20 mm and 20-30 mm are included in the scope of delivery of the grips

Insert jaws for TH232:

Jaw quick-change system. Insert jaws require a carrier (TH232-GT)

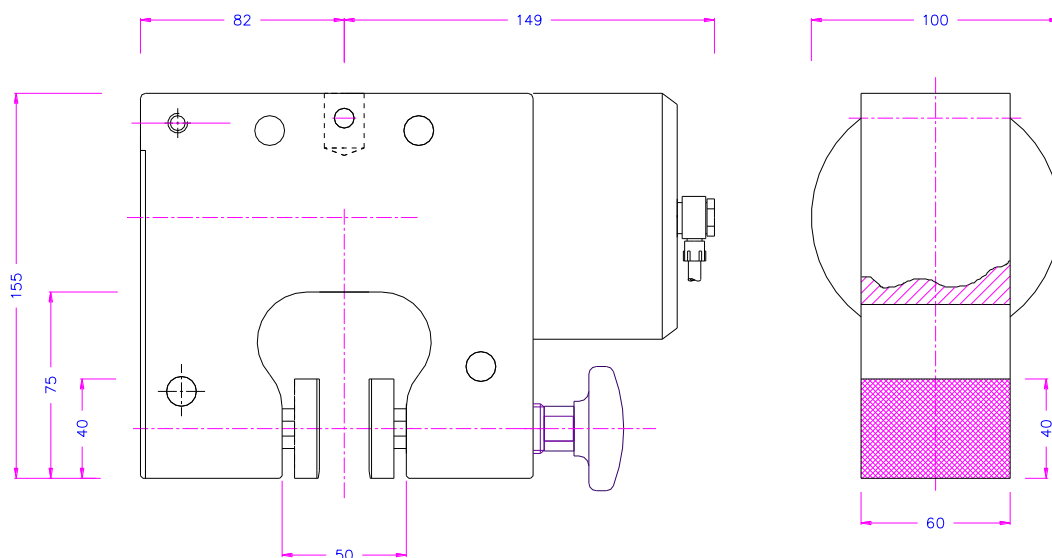
Scope of delivery: 1 set = 4 jaws



Item number	Surface	Clamping surface H x W	Opening*	Temperature range	Weight/ 1 pair
TH232-GT	Carrier	-	-	- 70 °C - +180°C	0.33 kg
TH232-EB	Blank insert jaws	50 x 60 mm	0-9 mm	+20 °C - +180°C	0.29 kg
TH232-EBG	Rubber coated insert jaws	50 x 60 mm	0-9 mm	- 70 °C - +70°C	0.30 kg
TH232-EBP	Pyramid insert jaws	50 x 60 mm	0-9 mm	- 70 °C - +180°C	0.28 kg
TH232-EBW	Wave insert jaws	50 x 60 mm	0-9 mm	- 70 °C - +180°C	0.26 kg
TH232-EBD	Diamond coated insert jaws	50 x 60 mm	0-9 mm	- 70 °C - +180°C	0.29 kg
TH232-GT100	Carrier	-	-	- 70 °C - +180°C	0.69 kg
TH232-EB100	Blank insert jaws	50 x 100 mm	0-9 mm	+20 °C - +180°C	0.63 kg
TH232-EBG100	Rubber coated insert jaws	50 x 100 mm	0-9 mm	- 70 °C - +70°C	0.65 kg
TH232-EBP100	Pyramid insert jaws	50 x 100 mm	0-9 mm	- 70 °C - +180°C	0.60 kg
TH232-EBW100	Wave insert jaws	50 x 100 mm	0-9 mm	- 70 °C - +180°C	0.57 kg
TH232-EBD100	Diamond coated insert jaws	50 x 100 mm	0-9 mm	- 70 °C - +180°C	0.63 kg

*On request: opening 9-19 mm

Jaws with other dimensions and surface coatings on request



TH 232

Accessories:



TH205-1 Foot pedals
None locking: The jaws of the grip open by pressing the foot pedal and close after removing the foot from the pedal.
 Scope of delivery: 1 pair of foot switches including tubes and fittings



TH205-2 Foot pedals
With locking function: The jaws of the grip open by pressing the foot pedal and remain opened after removing the foot from the pedal. The jaws close by pressing the pedal one more time.
 Scope of delivery: 1 pair of foot switches including tubes and fittings



TH205-PR16bar Pressure regulator
 Optional for TH205-1 or TH205-2
 To adjust air pressure: 1-16 bar



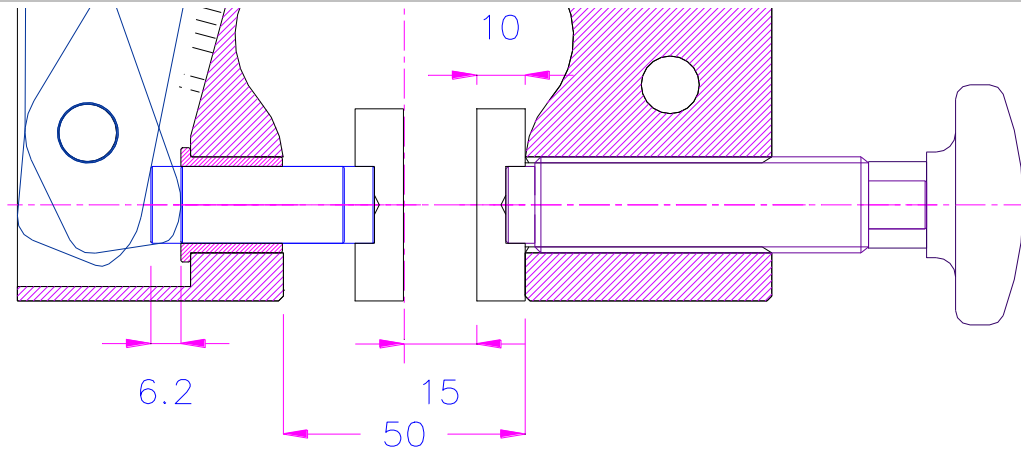
TH205-3 Hand switches
With locking function: The jaws of the grip close by pulling the handle and remain closed. The jaws open by pushing the handle back.
 Scope of delivery: 1 unit of hand switches including tubes and fittings



TH205-4-1/8" Micro hand switches
 Pneumatic micro hand switches with 1/8" connection, tubes and fittings
With locking function (see TH205-3)
 The hand switches are directly mounted at the grips. 3/2 directional valve
 Scope of supply: 2 hand switches including tubes and fittings



TH216 Silent compressor for laboratories, oil-lubricated, with pressure reducer
 Max pressure 16 bar; 230 V/50 HZ; noise level: 38 dB(A)
 Motor: 0.13 kW; displacement: 17 l/min; tank size 3.5 l
 Dimensions: 340x290x340 mm (L x W x H); weight 18 kg

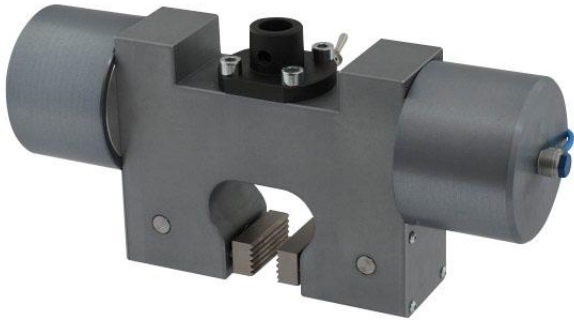


0–5  for samples 0–10mm

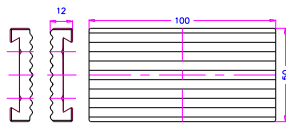
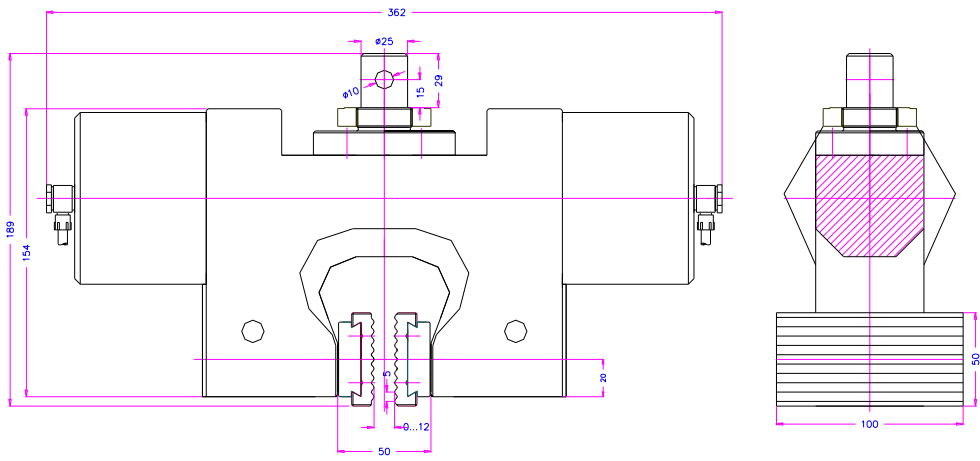
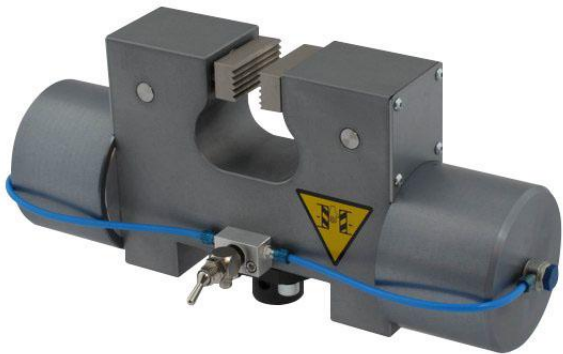
5–10  for samples 10–20mm

10–15  for samples 20–30mm

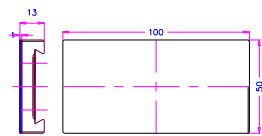
FIGURE 1



TH232-2Ko



TH83-EBW100



TH83-EBG100

TH232+2Ko- Am25+GT100+EBG100+EBW100

See also test videos

www.grip.de/G12/TH232

<http://youtu.be/cCtC0Gd1ZAs> + wave jaws textile 2 bar

<http://youtu.be/hrGdfGIJfJo> with diamond jaws thin foil

<http://youtu.be/WD16Uqq-fxw> with pyramid jaws 8 bar plastic sample

<http://youtu.be/jO3mH-KQK94> BP glued sample

<http://www.youtube.com/watch?v=olkEL5AQrAM> TH232+2Ko + special jaws