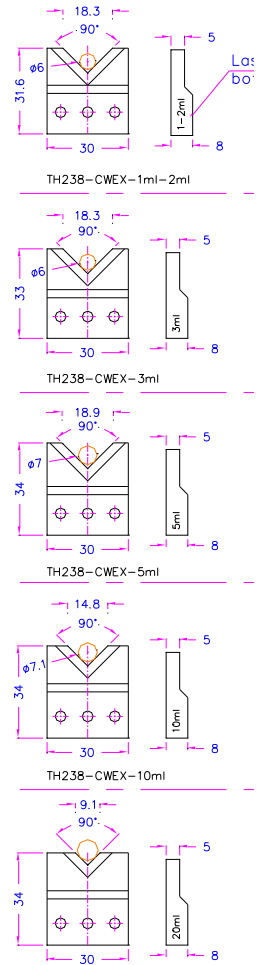
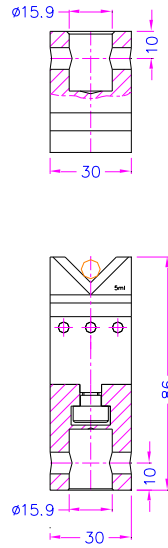
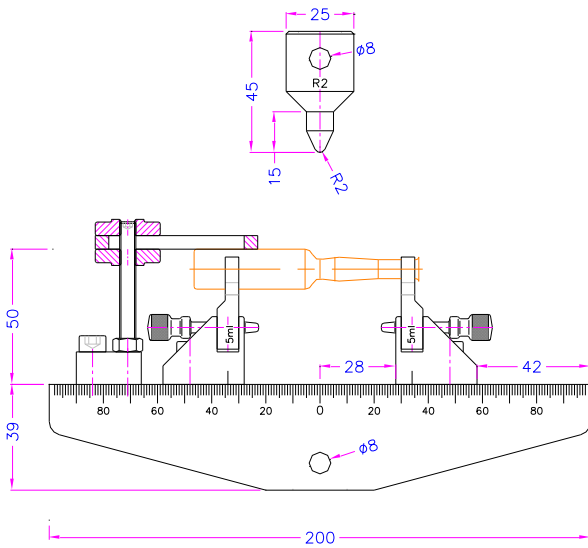


Bend test fixture to test breaking force of medical ampoules for injectables according to DIN EN ISO9187-1

Item no.:	TH238-B200-OR2-CWx-ANSg+WNE-ISO9187-1
Max. load:	5 kN
Coupling:	Af159 or Af20. Further couplings on request.
Material:	Steel, aluminium
Temperature range:	0 ... +70°C Further temperature ranges on request
Scope of supply:	1 bend test fixture incl. inserts



TH238-B200-OR2-CWx-ANSg+WNE-ISO9187-1

With a tray