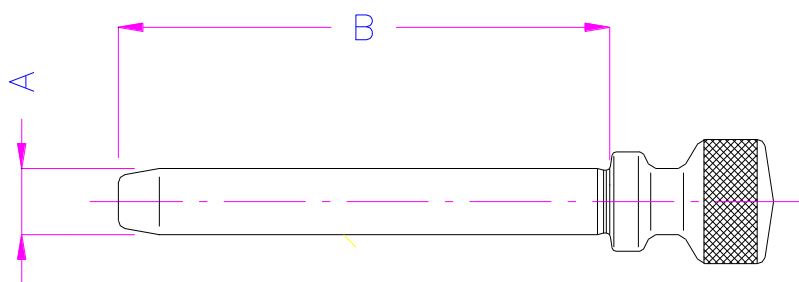


LOCKING PINS

Item no.: TH239-AxB
 A = diameter*
 B = working length
Material: Hardened steel 56 HRC,
 nickel-coated
Temperature range: -70 ... +350°C
Scope of delivery: 1 pin



*Dimension A has always a smaller real diameter than indicated

| A [mm] | B [mm] |
|--------|--------|
| 3 | 20 |
| 3 | 25 |
| 3 | 28 |
| 3.9 | 40 |
| 4 | 20 |
| 4.8 | 50 |
| 6 | 50 |
| 6.3 | 50 |
| 7.7 | 50 |
| 7.7 | 60 |
| 7.7 | 80 |
| 7.7 | 100 |
| 8 | 50 |
| 8 | 60 |
| 8 | 80 |
| 8 | 100 |
| 9.48 | 80 |
| 10 | 50 |
| 10 | 60 |
| 10 | 80 |
| 10 | 110 |
| 12 | 50 |
| 12 | 52 |
| 12 | 80 |
| 12 | 100 |
| 12 | 125 |
| 12 | 140 |
| 12.38 | 80 |
| 12.6 | 70 |
| 12.6 | 100 |
| 12.7 | 50 |
| 12.7 | 70 |
| 12.7 | 80 |
| 12.7 | 100 |
| 12.7 | 125 |

| A [mm] | B [mm] |
|--------|--------|
| 13 | 100 |
| 14 | 80 |
| 14 | 100 |
| 16 | 80 |
| 16 | 100 |
| 16 | 125 |
| 16 | 160 |
| 17.5 | 100 |
| 18 | 80 |
| 18 | 100 |
| 18 | 140 |
| 20 | 60 |
| 20 | 125 |
| 24 | 125 |
| 24 | 160 |
| 25 | 125 |
| 28 | 125 |
| 30 | 125 |
| 30 | 160 |
| 30 | 200 |
| 32 | 160 |
| 35 | 140 |
| 35 | 160 |
| 40 | 200 |
| 50 | 220 |

Further pin sizes on request

Special versions:

TH127-12.7x60-okp
Locking pins without heads