

COMPRESSION PLATENS

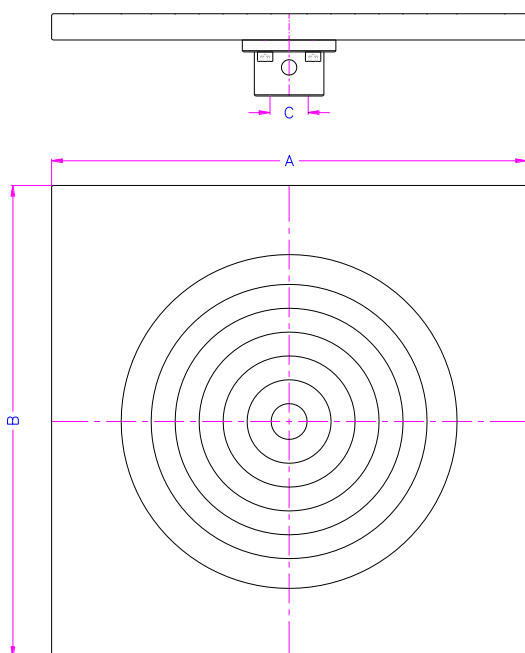
Aluminium compression platens are used to test soft samples such as cardboards, soft plastics, etc. Steel compression platens are applicable for hard materials e.g. steel, hard plastics, stone etc. Perforated compression platens are suitable for testing of foam materials.

Item no:	TH36-AxB-C-Al (aluminium platens) TH36-AxB-C-St (steel platens) TH36L-AxB-C-L (perforated platens)
Standard coupling:	Female [mm]: Ø 15.9 (5/8"), 20, 30, 31.8 (10/8"), 32, 36, 40 Male [mm]: Ø 31.7. Further couplings on request
Material:	Aluminium, anodized. Steel, hardened, nickel-plated
Temperature range:	-70 ... + 180°C (aluminium); -70 ... +350°C (steel) Further temperature ranges on request
Scope of supply:	1 pair of platens incl. adapter with a standard coupling

Aluminium platens

Item number	Dimensions	Weight/ platen
TH36-50-Al	50 x 50 mm	0.20 kg
TH36-100-Al	100 x 100 mm	0.52 kg
TH36-120-Al	120 x 120 mm	0.78 kg
TH36-120x180-Al	120 x 180 mm	1.14 kg
TH36-125x250-Al	125 x 250 mm	1.73 kg
TH36-150-Al	150 x 150 mm	1.23 kg
TH36-150x300-Al	150 x 300 mm	2.35 kg
TH36-200-Al	200 x 200 mm	2.10 kg
TH36-250-Al	250 x 250 mm	3.40 kg
TH36-300-Al	300 x 300 mm	4.35 kg
TH36-350-Al	350 x 350 mm	6.60 kg
TH36-400-Al	400 x 400 mm	8.70 kg

Further dimensions and modifications on request



Steel platens

Item number	Dimensions	Weight/ platen
TH36-100-St	100 x 100 mm	1.54 kg
TH36-196-St	196 x 196 mm	6.60 kg
TH36-246-St	246 x 246 mm	10.40 kg
TH36-296-St	296 x 296 mm	13.60 kg
TH36-396-St	396 x 396 mm	33.00 kg



TH36-250-Al



TH36-100-St

Perforated platens

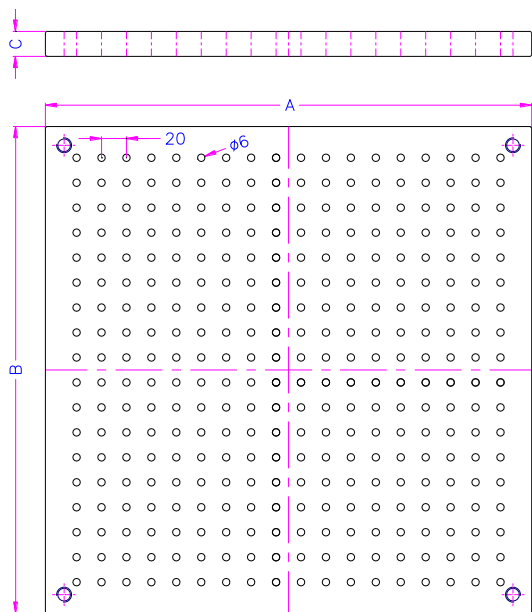
6 mm Ø holes spaced every 20 mm

Item number	Dimensions	Weight/each platen
TH36L-100-L6x20	100 x 100 mm	0.48 kg
TH36L-120-L6x20	120 x 120 mm	0.68 kg
TH36L-150-L6x20	150 x 150 mm	1.10 kg
TH36L-150x220-L6x20	150 x 220 mm	1.63 kg
TH36L-200-L6x20	200 x 200 mm	1.95 kg
TH36L-300-L6x20	300 x 300 mm	4.29 kg
TH36L-390-L6x20	390 x 390 mm	7.43 kg
TH36L-400-L6x20	400 x 400 mm	8.20 kg

Further dimensions and modifications on request

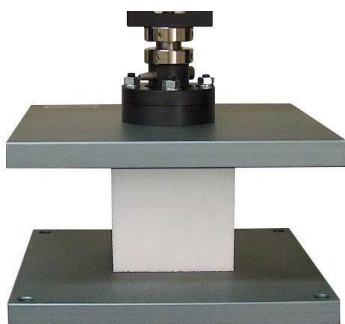


TH36L-200-L6x20



TH36L-200-L6x20

Examples for further modifications:



Combination:

TH36-250-AI + THS223k-250x250-AL

(self-aligning, spherically seated compression platen, see also [THS223](#))