

## TH56k Vise grip

A versatile general-purpose grip for plastics, textiles, paper, metal foil, aluminum, brass etc

Tensile force: 1 kN

Jaws pivot for self alignment

Temperature range: 0°C - +180°C (depending on jaws)  
Additional temperature ranges on request

Body made of aluminum, anodised

Weight per grip: 0.39 kg each with jaws

Scope of supply: 1 pair without jaws

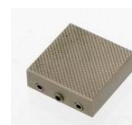
Also available as pneumatic version  
(see datasheet TH56k+ko)



**Blank (smooth) jaws**  
- Suitable for own further treatments  
- Steel-blanks without coating



**Rubber coated jaws**  
- 1mm rubber coating (NBR)  
- Nickel-plated



**Pyramid jaws (serrated, cross cut)**  
- Pyramids 1.2x45°  
- Hardened steel 58HRC  
- Nickel-plated



**V-jaws**  
- For all kinds of round samples  
- Tooth pitch 1.2 mm  
- Hardened steel 58HRC  
- Nickel-plated



**Wave jaws (corrugated)**  
- For flexible materials  
- Wave 5 mm  
- Hardened steel 58HRC  
- Nickel-plated

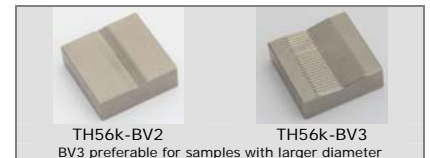


**Diamond coated jaws**  
- Clamping surface coated with synthetic diamonds D91 (170/200 mesh)  
- Nickel-plated

**Jaws for TH56k:** Scope of supply 1 Set = 4 jaws

Item no.	Surface	Clamping surface H x W	Opening	Weight 1 pair
TH56k-B	Blank jaws	30 x 30mm	0 – 10 mm	0.13 kg
TH56k-BG	Rubber coated jaws	30 x 30mm	0 – 8 mm	0.13 kg
TH56k-BP	Pyramid jaws	30 x 30mm	0 – 10 mm	0.12 kg
TH56k-BV2	V-jaws	30 x 30 mm	2 – 10 mm Ø	0.13 kg
TH56k-BV3	V-jaws	30 x 30 mm	3 – 10 mm Ø	0.13 kg
TH56k-BW	Wave jaws	30 x 30mm	0 – 10 mm	0.12 kg
TH56k-BD	Diamond coated jaws	30 x 30mm	0 – 10 mm	0.13kg

Jaws with other dimensions and surface coatings on request

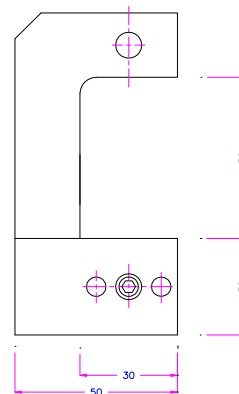
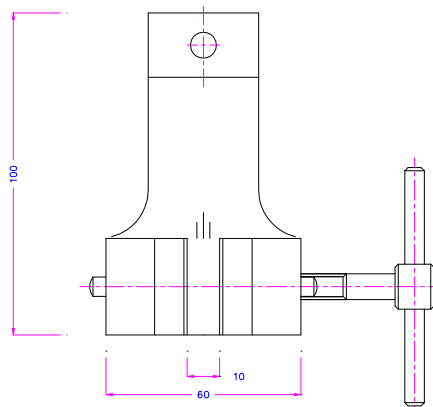
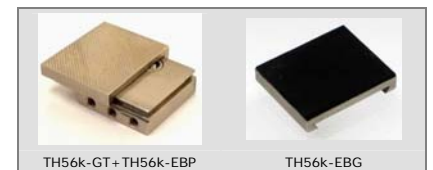


**Inset jaws for TH56k:** Scope of supply 1 Set = 4 jaws

Quick change system, Inset jaws require carriers (TH56k-GT..)

Item no.	Surface	Clamping surface H x W	Opening	Weight 1 pair
TH56k-GT	Carrier	-	-	0.12 kg
TH56k-EB	Blank inset jaws	30 x 36mm	0-4mm	0.06 kg
TH56k-EBG	Rubber inset jaws	30 x 36mm	0-2mm	0.06 kg
TH56k-EBP	Pyramid inset jaws	30 x 36mm	0-4mm	0.05 kg
TH56k-EBD	Diamond inset jaws	30 x 36mm	0-4mm	0.06 kg

Jaws with other dimensions and surface coatings on request



TH 56-k