

TH56k +Ko – Pneumatic grip

Pneumatic piston 50mm Ø,
manually adjustable counter-jaw
Weight: 0.53 kg per grip

TH56k +2Ko Pneumatic grip

Two-sided pneumatic pistons 50mm Ø
Weight: 0.71 kg per grip

- Clamping force: 1.2 kN / 7bar
- Temperature range: 0°C - +70°C (depending on jaws)
- Additional temperature ranges available on request
- Body: Aluminum, anodized
- Pneumatic connection: M5

Also available as vise grip (see data sheet TH56k)

Ordering information

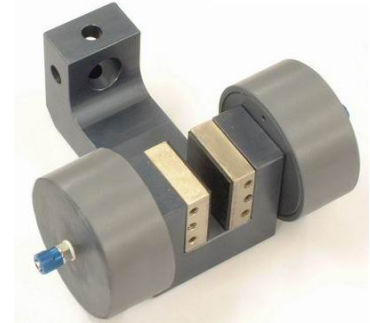
Item No. TH56k+Ko

Item No. TH56k+2Ko

Scope of delivery: 1 pair without jaws, which must be ordered separate.



TH56k+ko

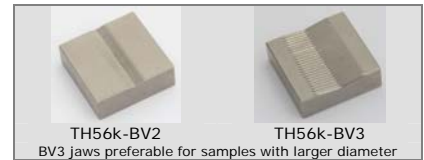


TH56k+2Ko

Jaws for TH56k+Ko and TH56k+2Ko: Scope of delivery 1 set = 4 jaws

Item No.	Surface	Clamping surface H x W	Opening	Weight per pair
TH56k-B	Blank jaws	30 x 30mm	0 – 10 mm	0.13 kg
TH56k-BG	Rubber jaws	30 x 30mm	0 – 8 mm	0.13 kg
TH56k-BP	Pyramid jaws	30 x 30mm	0 – 10 mm	0.12 kg
TH56k-BV2	V-jaws	30 x 30mm	2 – 10 mm Ø	0.13 kg
TH56k-BV3	V-jaws	30 x 30mm	3 – 10 mm Ø	0.13 kg
TH56k-BW	Wave jaws	30 x 30mm	0 – 10 mm	0.12 kg
TH56k-BD	Diamond jaws	30 x 30mm	0 – 10 mm	0.13 kg
TH56k-BLC	Line contact jaws*	30 x 30mm	0 – 6 mm	0.13 kg

* Scope of delivery TH56k-BLC: 1 set = 2xTH56k-BG + 2xTH56k-BLC jaws



TH56k-BV2

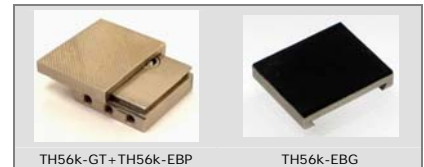
TH56k-BV3

BV3 jaws preferable for samples with larger diameter

Inset jaws for TH56k+Ko and TH56k+2Ko: Scope of delivery 1 set = 4 jaws

Quick change system. Inset jaws require carriers (TH56k-GT)

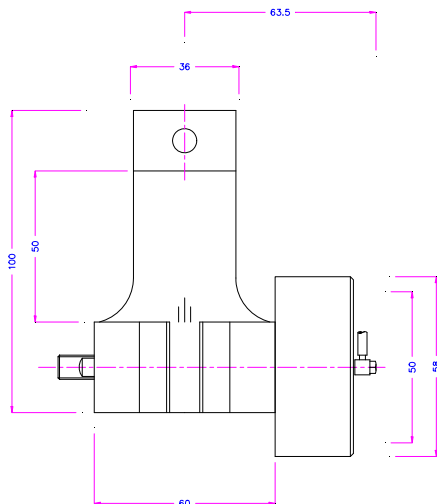
Item No.	Surface	Clamping surface H x W	Opening	Weight per pair
TH56k-GT	Carrier	-	-	0.12 kg
TH56k-EB	Blank inset jaws	30 x 36mm	0-4mm	0.06 kg
TH56k-EBG	Rubber inset jaws	30 x 36mm	0-2mm	0.06 kg
TH56k-EBP	Pyramid inset jaws	30 x 36mm	0-4mm	0.05 kg
TH56k-EBD	Diamond inset jaws	30 x 36mm	0-4mm	0.06 kg



TH56k-GT+TH56k-EBP

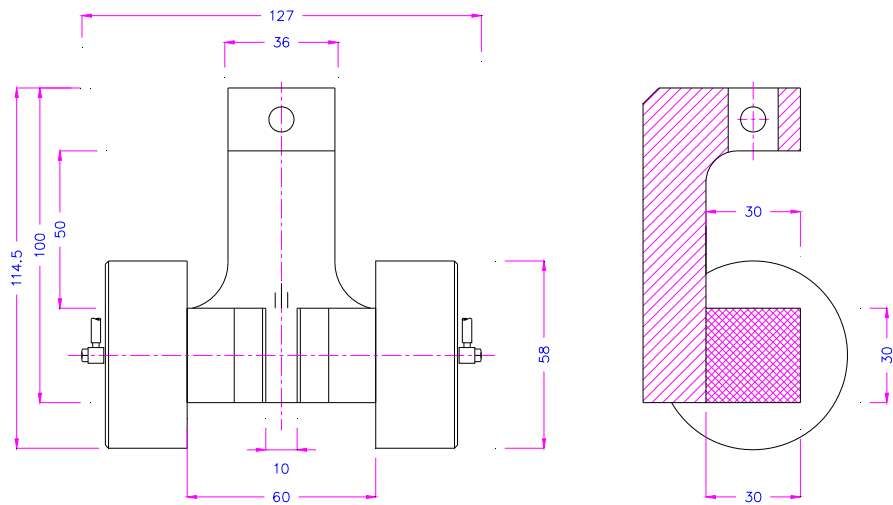
TH56k-EBG

Jaws with other dimensions and surface coatings on request



TH56k+Ko

	Blank jaws - Applicable for own further treatments - Steel blanks without coating
	Rubber jaws - Rubber coating (NBR) - Nickel plated
	Pyramid jaws - Pyramids 1,2x45° - Hardened steel 58 HRC - Nickel plated
	V-jaws - For all kinds of round samples - Tooth pitch 1.2 mm - Hardened steel 58HRC - Nickel plated
	Wave jaws - For flexible materials - Wave 5 mm - Hardened steel 58HRC - Nickel plated
	Diamond jaws - Clamping surface coated with synthetic diamonds - Nickel plated
	Line contact jaws - Radius 3 - Nickel plated



TH56k+2Ko

Examples for special designed jaw faces



TH56k-BG20x20

TH56k-BP0.5x45
Small pyramid serrated

TH56k-BP20x30

TH56k-BTe
Teflon coating

Accessories:



TH205-1

2 pneumatic foot switches, tubes and fittings

None locking: The jaws of the grip open by pressing the foot pedal and close after removing the foot from the pedal.

Scope of delivery: 1 pair of foot switches including tubes and fittings

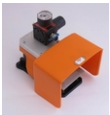


TH205-2

2 pneumatic foot switches, tubes and fittings,

With locking function: The jaws of the grip open by pressing the foot pedal and remain opened after removing the foot from the pedal. The jaws close by pressing the pedal one more time.

Scope of delivery: 1 pair of foot switches including tubes and fittings



TH205-.+PR

Optional for TH205-1 or TH205-2

Pressure regulator

To adjust air pressure: 1-10 bar



TH205-3

1 unit of pneumatic hand switches, tubes and fittings

With locking function: Handle with 2 positions. The jaws of the grip close by pulling the handle and remain closed. The jaws open by pushing the handle back.

Scope of delivery: 1 unit of hand switches including tubes and fittings



TH216

Silent compressor appropriate for laboratories

Max pressure: 16 bar; noise level: 45dB(A)

Motor 400 watt; displacement 25 l/min

With pressure reducer / water trap

Dimensions: 382x300x334 mm (L x W x H), tank size 4 litres, Weight ~ 23 kg