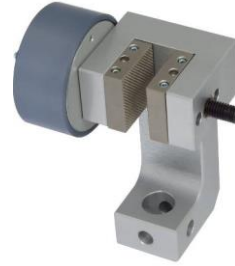


PNEUMATIC GRIPS

Small universal pneumatic grips with quick clamping action to test foils, textiles, paper, etc.
Pneumatic piston 50 mm Ø
Manually adjustable counter jaws

Also available as manual vise grip, see [TH56k data sheet](#)

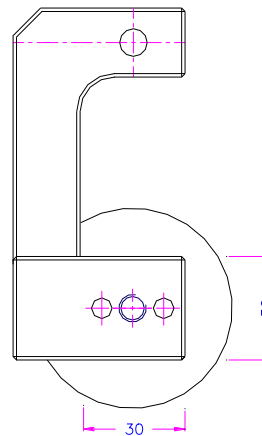
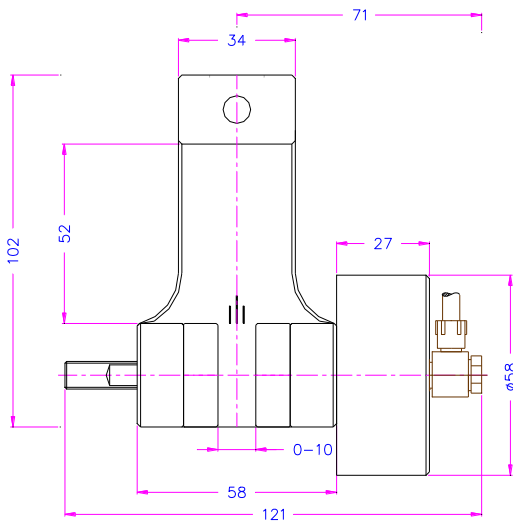
Item no.:	TH56k+Ko TH56k+2Ko
Clamping force:	1.2 kN at 7 bar
Jaw opening:	0-10 mm depending on jaws (see p. 2)
Coupling:	Af159 or Af20 Further couplings on request
Pneumatic connection:	M5 internal thread
Body:	Anodized aluminium
Temperature range:	0 ... +70°C Further temperature ranges on request
Weight per grip without jaws:	1.02 kg (TH56k+Ko) 1.42 kg (TH56k+2Ko)
Scope of supply:	1 pair of grips without jaws



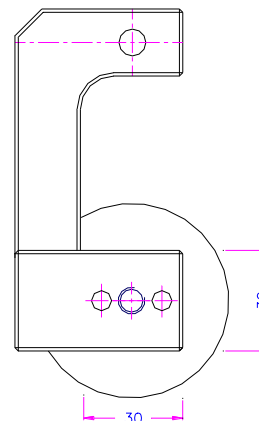
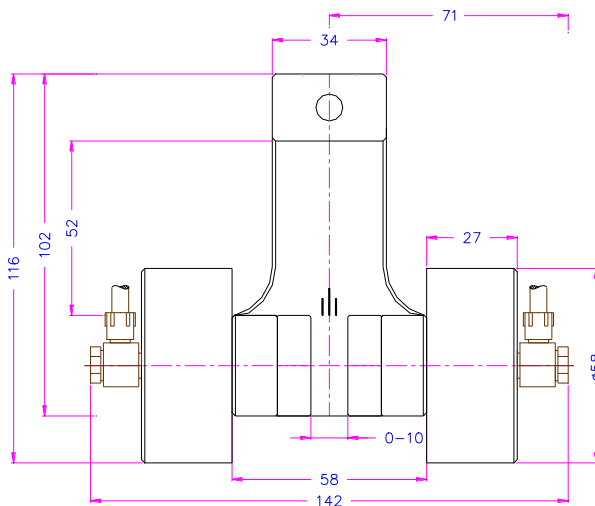
TH56k+Ko



TH56k+2Ko



TH56k+Ko



TH56k+2Ko

Jaws for TH56k+Ko and TH56k+2Ko

Scope of delivery 1 set = 4 jaws

Item no.	Surface	Clamping surface H x W	Opening	Weight per pair
TH56k-B	Blank jaws	30 x 30 mm	0 – 10 mm	0,13 kg
TH56k-BG	Rubber-coated jaws	30 x 30 mm	0 – 8 mm	0,13 kg
TH56k-BP	Pyramid (serrated)jaws	30 x 30 mm	0 – 10 mm	0,12 kg
TH56k-BV2	V jaws	30 x 30 mm	2 – 10 mm Ø	0,13 kg
TH56k-BV3	V jaws	30 x 30 mm	3 – 10 mm Ø	0,13 kg
TH56k-BW	Wave jaws	30 x 30 mm	0 – 10 mm	0,12 kg
TH56k-BD	Diamond jaws	30 x 30 mm	0 – 10 mm	0,13 kg
TH56k-BLC	Line contact jaws*	30 x 30 mm	0 – 6 mm	0,13 kg

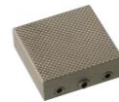
*Scope of delivery TH56k-BLC: 1 set = 2 x TH56k-BG + 2 x TH56k-BLC jaws



Blank (smooth) jaws
- Suitable for own further treatments
- Nickel-plated



Rubber-coated jaws
- 1 mm rubber coating (NBR)
- Nickel-plated



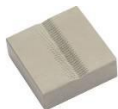
Pyramid (serrated) jaws
- Pyramids 1.2x45°
- Hardened steel 58HRC
- Nickel-plated



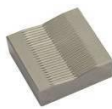
Wave jaws
- For flexible materials
- Wave 5 mm
- Hardened steel 58HRC
- Nickel-plated



Diamond-coated jaws
- Clamping surface coated with synthetic diamonds D91 (170/200 mesh)
- Nickel-plated



V-jaws TH56k-BV2
- For all kinds of round samples
- Tooth pitch 0.8 mm
- Hardened steel 58HRC
- Nickel-plated



V jaws TH56k-BV3
- For round samples of larger diameter
- Tooth pitch 1 mm
- Hardened steel 58HRC
- Nickel-plated

Insert jaws

Quick change system. Insert jaws require carriers (TH56k-GT30)

Scope of delivery 1 set = 4 jaws

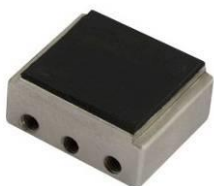
Item no.	Surface	Clamping surface H x W	Opening	Weight per pair
TH56k-GT30	Carrier	-	-	0,09 kg
TH56k-EB	Blank insert jaws	30 x 30 mm	0-7 mm	0,05 kg
TH56k-EBG	Rubber insert jaws	30 x 30 mm	0-5 mm	0,06 kg
TH56k-EBP	Pyramid insert jaws	30 x 30 mm	0-7 mm	0,05 kg
TH56k-EBW	Wave insert jaws	30 x 30 mm	0-7 mm	0,05 kg
TH56k-EBD	Diamond insert jaws	30 x 30 mm	0-7 mm	0,06 kg



TH56k-GT30+TH56k-EBP

Jaws with other dimensions and surface coatings on request

Examples for customized solutions:



TH56k-BG20x20



TH56k-BP0.5x45
Fine serration 0.5 mm



TH56k-BGVu
Vulkollan coating
High wear resistance



TH56k-BTe
Teflon coating

Accessories:**TH205-1 Foot pedals**

None locking: The jaws of the grip open by pressing the foot pedal and close after removing the foot from the pedal.

Scope of delivery: 1 pair of foot switches including tubes and fittings

**TH205-2 Foot pedals**

With locking function: The jaws of the grip open by pressing the foot pedal and remain opened after removing the foot from the pedal. The jaws close by pressing the pedal one more time.

Scope of delivery: 1 pair of foot switches including tubes and fittings

**TH205-PR16bar Pressure regulator**

Optional for TH205-1 or TH205-2

To adjust air pressure: 1-16 bar

**TH205-3 Hand switches**

With locking function: The jaws of the grip close by pulling the handle and remain closed. The jaws open by pushing the handle back.

Scope of delivery: 1 unit of hand switches including tubes and fittings

**TH205-4-M5 Hand switches**

Pneumatic micro – hand switches, tubes and fittings, M5 connection

With locking function: The hand switches are directly installed at the grips, 3/2 directional valve. Only for single action rods with spring inside.

Scope of supply: 2 hand switches including tubes and fittings

**TH216 Silent compressor for laboratories, oil-lubricated, with pressure reducer**

Max pressure 16 bar; 230 V/50 HZ; noise level: 38 dB(A)

Motor: 0.13 kW; displacement: 17 l/min; tank size 3.5 l

Dimensions: 340x290x340 mm (L x W x H); weight 18 kg