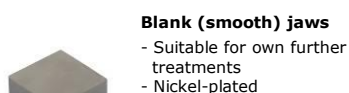


## SCREW ACTION GRIP

- Provides a simple and effective method to hold specimens
- Dual acting design, also for asymmetrical samples
- Jaws articulate and provide self-aligning and self-tightening effect
- Versatile application for plastics, textiles, paper, metal foil, aluminium, brass, etc.
- Also available as pneumatic version (see datasheet [TH56k+ko](#))



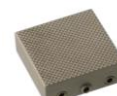
<b>Item no.:</b>	<b>TH56k</b>
Tensile force:	1 kN
Coupling:	Af159 or Af20 mm. Further couplings on request
Body:	Aluminium, anodised
Temperature range:	0°C ... +70°C (depending on jaws) Other temperature ranges on request
Weight:	0.75 kg per pair of grips without jaws
Scope of supply:	1 pair of grips without jaws



**Blank (smooth) jaws**  
- Suitable for own further treatments  
- Nickel-plated



**Rubber-coated jaws**  
- 1 mm rubber coating (NBR)  
- Nickel-plated



**Pyramid (serrated) jaws**  
- Pyramids 1.2x45°  
- Hardened steel 58HRC  
- Nickel-plated



**V-jaws**  
- For all kinds of round samples  
- Tooth pitch 1 mm (BV3) or 0.8 mm (BV2)  
- Hardened steel 58HRC  
- Nickel-plated



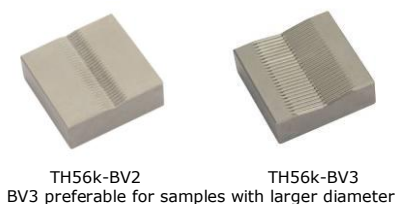
**Wave jaws**  
- For flexible materials  
- Wave 5 mm  
- Hardened steel 58HRC  
- Nickel-plated



**Diamond-coated jaws**  
- Clamping surface coated with synthetic diamonds  
- Wave 5 mm  
- D91 (170/200 mesh)  
- Nickel-plated

### Jaws for TH56k: Scope of supply 1 set = 4 jaws

Item no.	Surface	Clamping surface H x W	Opening	Weight 1 pair
TH56k-B	Blank jaws	30 x 30 mm	0 - 10 mm	0.13 kg
TH56k-BG	Rubber coated jaws	30 x 30 mm	0 - 8 mm	0.13 kg
TH56k-BP	Pyramid jaws	30 x 30 mm	0 - 10 mm	0.12 kg
TH56k-BV2	V-jaws	30 x 30 mm	2 - 10 mm Ø	0.13 kg
TH56k-BV3	V-jaws	30 x 30 mm	3 - 10 mm Ø	0.13 kg
TH56k-BW	Wave jaws	30 x 30 mm	0 - 10 mm	0.12 kg
TH56k-BD	Diamond coated jaws	30 x 30 mm	0 - 10 mm	0.13 kg



TH56k-BV2 TH56k-BV3  
BV3 preferable for samples with larger diameter

### Insert jaws for TH56k: Scope of supply 1 set = 4 jaws Quick change system, insert jaws require carriers (TH56k-GT30)

Item no.	Surface	Clamping surface H x W	Opening	Weight 1 pair
TH56k-GT30	Carrier	-	-	0.09 kg
TH56k-EB	Blank insert jaws	30 x 30 mm	0-8 mm	0.05 kg
TH56k-EBG	Rubber insert jaws	30 x 30 mm	0-6 mm	0.06 kg
TH56k-EBP	Pyramid insert jaws	30 x 30 mm	0-8 mm	0.05 kg
TH56k-EBW	Wave insert jaws	30 x 30 mm	0-8 mm	0.05 kg
TH56k-EBD	Diamond insert jaws	30 x 30 mm	0-8 mm	0.06 kg



TH56k-GT30 + TH56k-EBP

Jaws with other dimensions and surface coatings on request

