

## TH83 Pneumatic grip

Clamping force: 7 kN / 7 bar (max.16 bar)

Standard temperature range: 0 °C - +70°C  
Further temperature ranges on request

Body made of aluminum

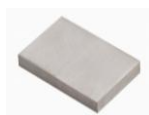
Pneumatic internal thread connection: 1/8"

Weight 3.2 kg each without jaws

Scope of supply: 1 pair



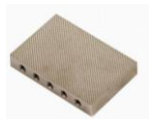
**Jaws for TH83:** Scope of supply: 1 set = 4 jaws



**Blank (smooth) jaws**  
- Suitable for own further treatments  
- Steel-blanks without coating



**Rubber coated jaws**  
- 1 mm rubber coating (NBR)  
- Nickel-plated



**Pyramid jaws (serrated)**  
- Pyramids 1.2x45  
- Hardened steel 58HRC  
- Nickel-plated°



**V-jaws**  
- For all kinds of round samples  
- Tooth pitch 1.2 mm  
- Hardened steel 58HRC  
- Nickel-plated



**Wave jaws (corrugated)**  
- For flexible materials  
- Wave 5 mm  
- Hardened steel 58HRC  
- Nickel-plated



**Diamond coated jaws**  
- Clamping surface coated with synthetic diamonds D91 (170/200 mesh)  
- Nickel-plated

Item number	Surface	Clamping surface H x W	Opening*	Temperature range	Weight/1 pair
TH83-B	Blank jaws	40 x 60 mm	0 - 10 mm	+20 °C - +180°C	0.35 kg
TH83-BG	Rubber coated jaws	40 x 60 mm	0 - 10 mm	- 70 °C - +70°C	0.36 kg
TH83-BP	Pyramid jaws	40 x 60 mm	0 - 10 mm	- 70 °C - +180°C	0.33 kg
TH83-BV4	V-jaws	clamping height 40 mm	4 - 12 mm Ø	- 70 °C - +180°C	0.35 kg
TH83-BV6	V-jaws	clamping height 40 mm	6 - 30 mm Ø	- 70 °C - +180°C	0.34 kg
TH83-BW	Wave jaws	40 x 60 mm	0 - 10 mm	- 70 °C - +180°C	0.40 kg
TH83-BD	Diamond coated jaws	40 x 60 mm	0 - 10 mm	- 70 °C - +180°C	0.35 kg
TH83-B100	Blank jaws	40 x 100 mm	0 - 10 mm	+20 °C - +180°C	0.72 kg
TH83-BG100	Rubber coated jaws	40 x 100 mm	0 - 10 mm	- 70 °C - +70°C	0.74 kg
TH83-BP100	Pyramid jaws	40 x 100 mm	0 - 10 mm	- 70 °C - +180°C	0.69 kg
TH83-BW100	Wave jaws	40 x 100 mm	0 - 10 mm	- 70 °C - +180°C	0.66 kg
TH83-BD100	Diamond coated jaws	40 x 100 mm	0 - 10 mm	- 70 °C - +180°C	0.72 kg
TH83-BW200	Wave jaws	60 x 200 mm	0 - 10 mm	0 °C - +180°C	3.00 kg

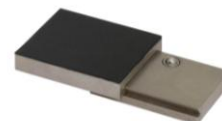
\*Rods for openings 10 - 20 mm and 20 - 30 mm are included in the scope of delivery of the grips

### Insert jaws for TH83:

Jaw quick changing system

Insert jaws require carriers (TH83-GT)

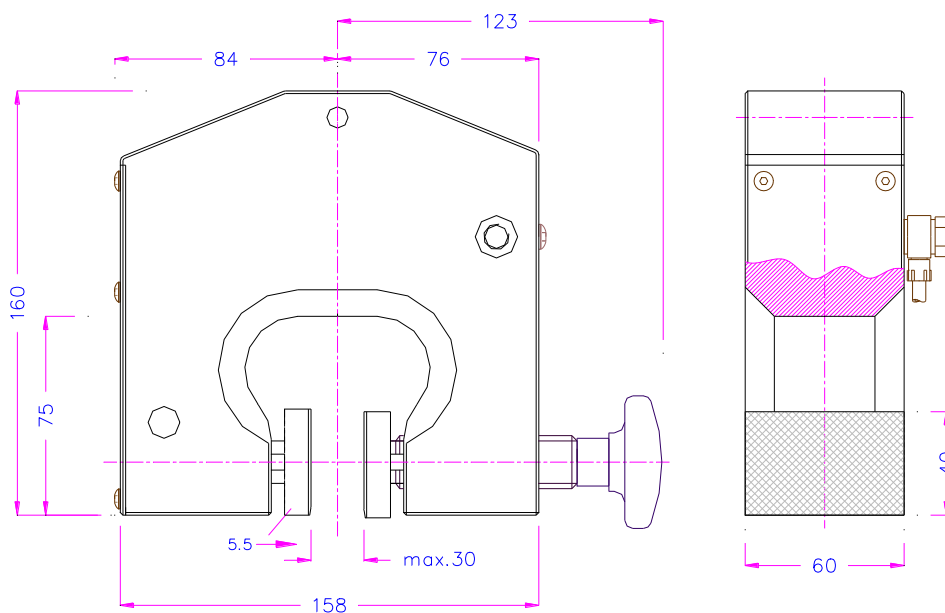
Scope of delivery: 1 set = 4 jaws



Item number	Surface	Clamping surface H x W	Opening*	Temperature range	Weight/1 pair
TH83-GT	Carrier	-	-	- 70 °C - +180°C	0.33 kg
TH83-EBB	Blank insert jaws	50 x 60 mm	0-9 mm	+20 °C - +180°C	0.29 kg
TH83-EBG	Rubber coated insert jaws	50 x 60 mm	0-9 mm	- 70 °C - +70°C	0.30 kg
TH83-EBP	Pyramid insert jaws	50 x 60 mm	0-9 mm	- 70 °C - +180°C	0.28 kg
TH83-EBW	Wave insert jaws	50 x 60 mm	0-9 mm	- 70 °C - +180°C	0.26 kg
TH83-EBD	Diamond coated insert jaws	50 x 60 mm	0-9 mm	- 70 °C - +180°C	0.29 kg
TH83-GT100	Carrier	-	-	- 70 °C - +180°C	0.69 kg
TH83-EB100	Blank insert jaws	50 x 100 mm	0-9 mm	+20 °C - +180°C	0.63 kg
TH83-EBG100	Rubber coated insert jaws	50 x 100 mm	0-9 mm	- 70 °C - +70°C	0.65 kg
TH83-EBP100	Pyramid insert jaws	50 x 100 mm	0-9 mm	- 70 °C - +180°C	0.60 kg
TH83-EBW100	Wave insert jaws	50 x 100 mm	0-9 mm	- 70 °C - +180°C	0.57 kg
TH83-EBD100	Diamond coated insert jaws	50 x 100 mm	0-9 mm	- 70 °C - +180°C	0.63 kg

\*Rods for opening 9-19 mm are included in the scope of delivery of the grips

Jaws with other dimensions and surface coatings on request



TH83 + TH83-BW200



TH83 + TH83-GT100 + TH83-EBG100

**Accessories:**



**TH205-1 Foot pedals**

None locking: The jaws of the grip open by pressing the foot pedal and close after removing the foot from the pedal.  
Scope of delivery: 1 pair of foot switches including tubes and fittings



**TH205-2 Foot pedals**

With locking function: The jaws of the grip open by pressing the foot pedal and remain opened after removing the foot from the pedal. The jaws close by pressing the pedal one more time.  
Scope of delivery: 1 pair of foot switches including tubes and fittings



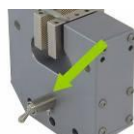
**TH205-PR16bar Pressure regulator**

Optional for TH205-1 or TH205-2  
To adjust air pressure: 1-16 bar



**TH205-3 Hand switches**

With locking function: The jaws of the grip close by pulling the handle and remain closed. The jaws open by pushing the handle back.  
Scope of delivery: 1 unit of hand switches including tubes and fittings



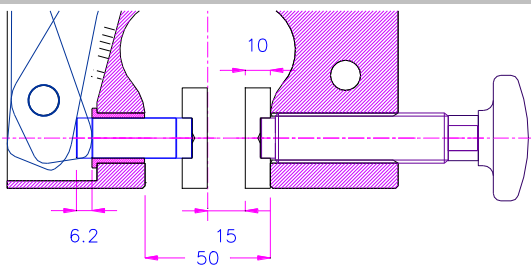
**TH205-4-1/8" Hand switches for TH83**

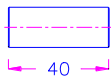
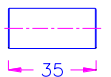
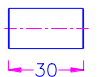
Pneumatic micro – hand switches, tubes and fittings, 1/8" connection  
The hand switches are directly mounted at the grips. 3/2 directional valve  
Scope of supply: 2 hand switches including tubes and fittings



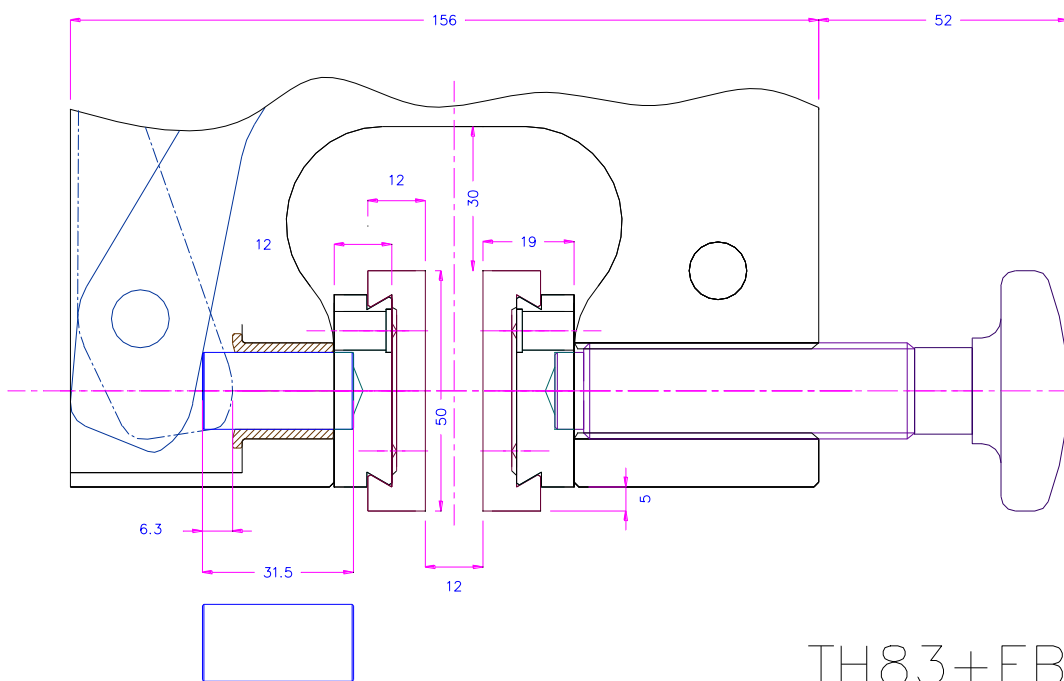
**TH216 Silent compressor for laboratories, oil-lubricated, with pressure reducer**

Max pressure 16 bar; 230 V/50 HZ; noise level: 38 dB(A)  
Motor: 0.13 kW; displacement: 17 l/min; tank size 3.5 l  
Dimensions: 340x290x340 mm (L x W x H); weight 18 kg

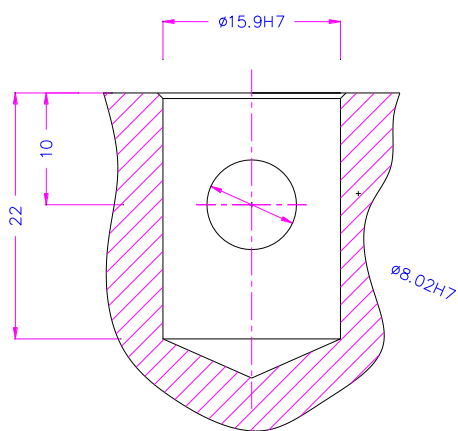


- 0-5  for samples 0-10mm  
40
- 5-10  for samples 10-20mm  
35
- 10-15  for samples 20-30mm  
30

TH83-inside



TH83+EB



Af159 (5/8")

Siehe auch [www.grip.de/G12](http://www.grip.de/G12)