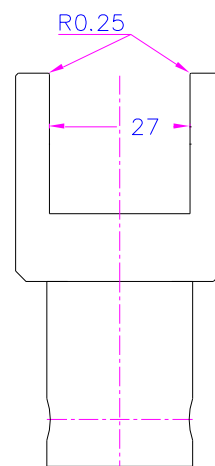
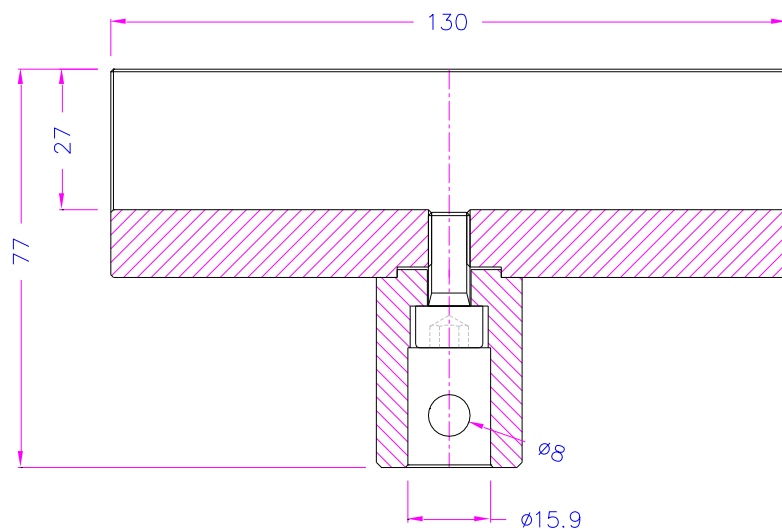
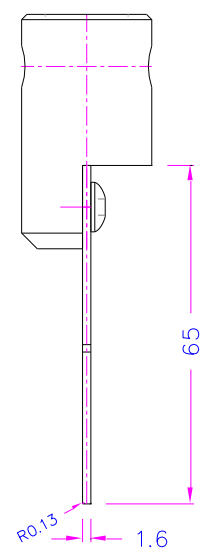
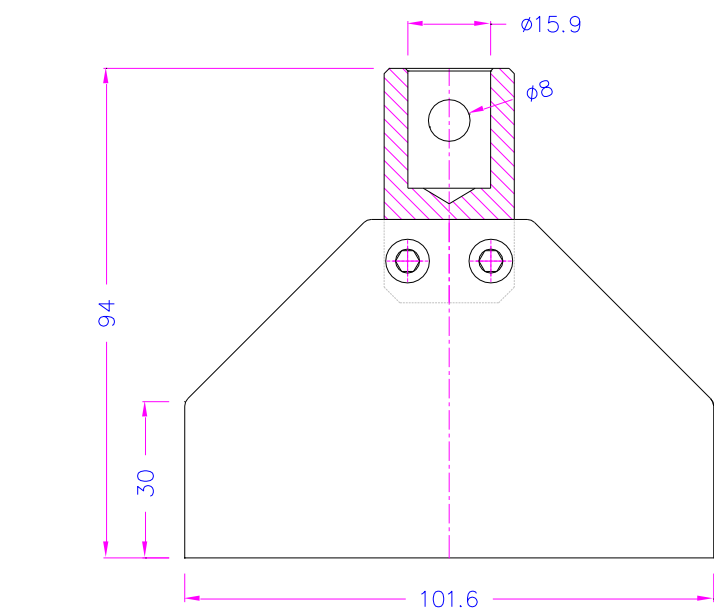
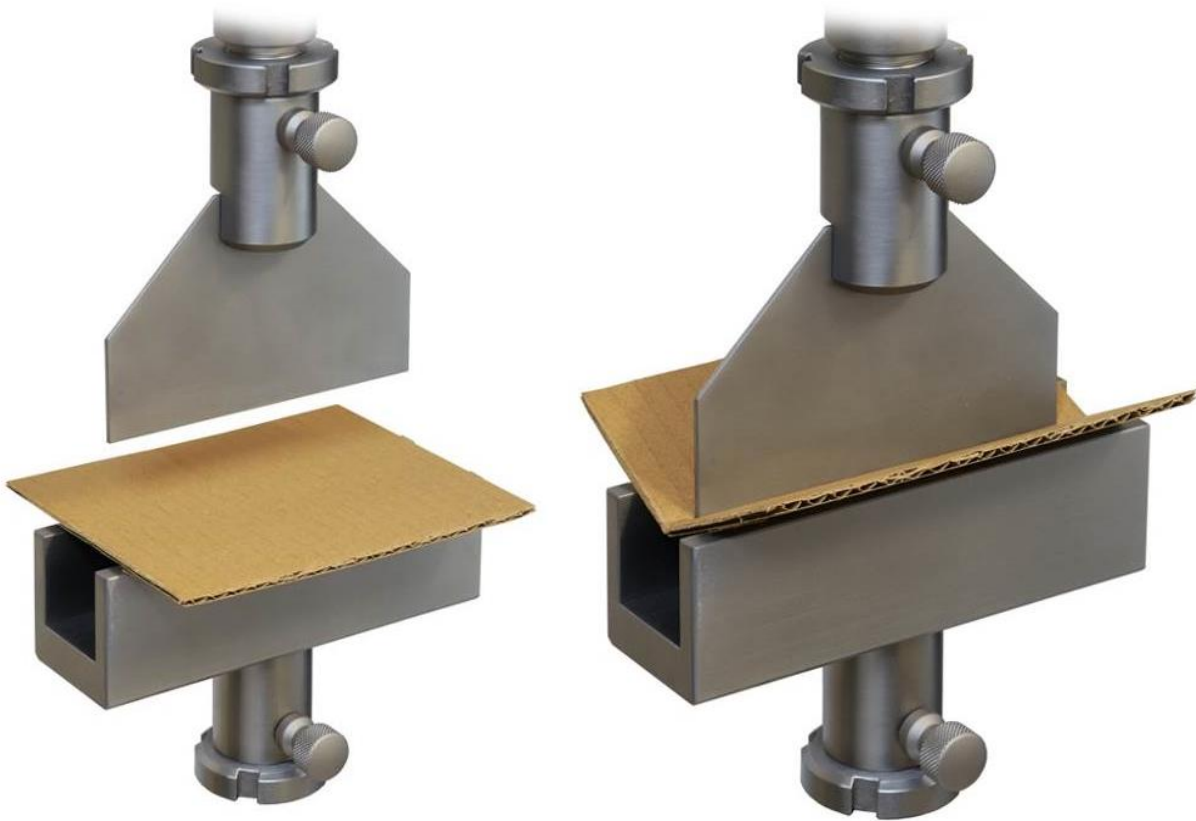


BEND TEST FIXTURE

for paper and corrugated cardboard according to TAPPI-T829.

Item no.:	THS1276-G27-1.6-101.6-TAPPI-T829
Max. load:	1 kN
Coupling:	Af159 Further couplings on request
Material:	Stainless steel
Temperature range:	0 ... +70°C Further temperature ranges on request
Weight:	1.8 kg per fixture
Scope of delivery:	1 fixture





See also our [Gif-Animation](#) that explains the operating principle of THS1276 fixture