

PNEUMATIC BOLLARD GRIPS 200 N, 2 kN, 5 kN, 10 kN

- Depending on type, applicable for tensile tests on fibers, fine wires, cords, filaments, yarns, etc.
- Guide horn with centering groove
- Specimen is wrapped 180° around the bollard to prevent the breakage in the clamping area by generating a slow notch free stress relief



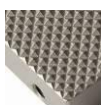
Item number:	THS13k	THS13m THS13m+SSB	THS13g-5 THS13g-10
Applicable for:	Fibers, filaments, etc.	Yarns, cords, strands, etc.	Wires, strands, cords, etc.
Tensile force:	200 N / 7 bar	2 kN / 7 bar	5 kN / 7 bar (THS13g-5) 10 kN / 7 bar (THS13g-10)
Clamping force:	350 N / 7 bar	6 kN / 7 bar	10 kN / 7 bar
Recommended specimen Ø:	1 mm Ø	2 mm Ø	3 mm Ø
Minimal specimen length:	15 cm	25 cm	30 cm
Clamping surface of jaws HxW:	6 x 20 mm	12 x 36 mm	15 x 44 mm
Coupling:*	Af8	Af159	Af159
Pneumatic connection:	M3 for micro fittings or with additional adapter (TH205-PK23) for 1/8" normal pneumatics		Internal thread M5
Body:	Aluminum, anodized		
Bollard:	Anodized aluminum	Anodized aluminum (THS13m) Stainless steel (THS13m+SSB)	Anodized aluminum (THS13g-5) Stainless steel (THS13g-10)
Temperature range:	-10 ... +70°C -70 ... +180°C possible with Viton sealing and Teflon tubes; further temperature ranges on request		
Weight per grip incl. jaws:	0.15 kg	1.13 kg (THS13m) 1.25 kg (THS13m+SSB)	1.82 kg (THS13g-5) 2.22 kg (THS13g-10)
Scope of delivery:	1 pair of grips without jaws		

*Further couplings on request

Jaw surfaces for THS13:



THS13-B
Blank jaws



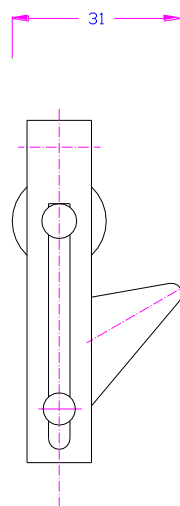
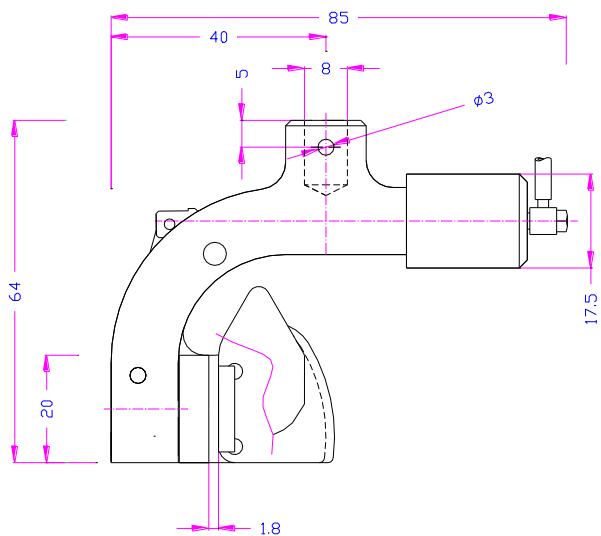
THS13-BP
Pyramid (serrated) jaws



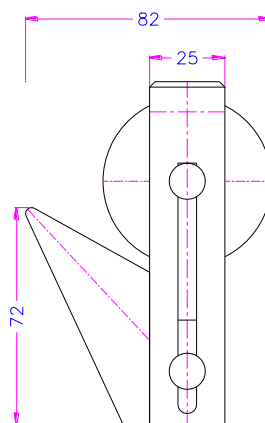
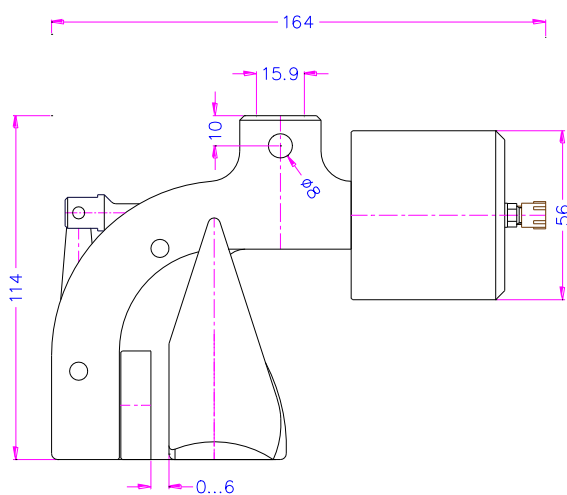
THS13-BG
Rubber-faced jaws



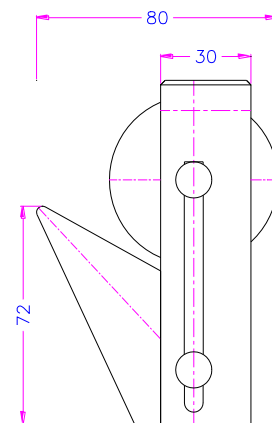
THS13-BD
Diamond-faced jaws



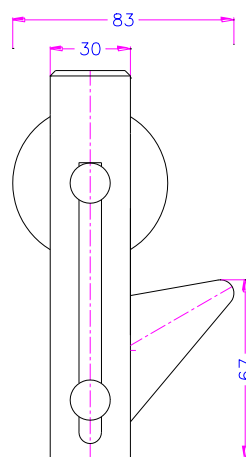
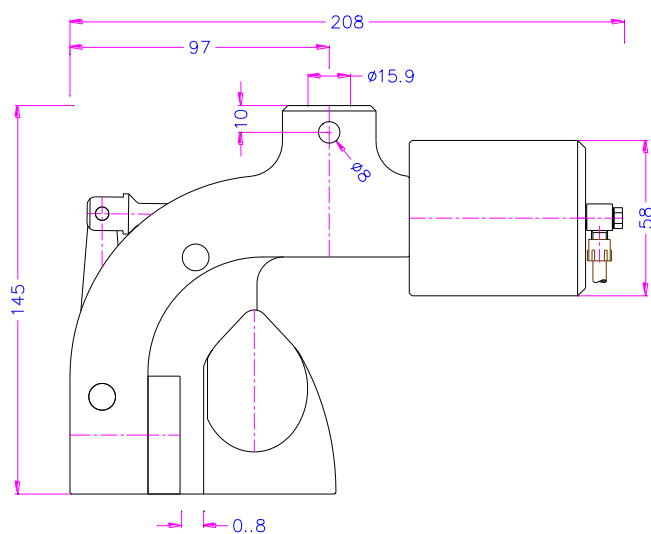
THS13k



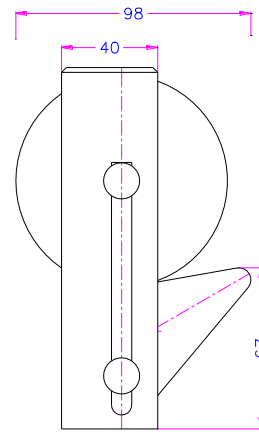
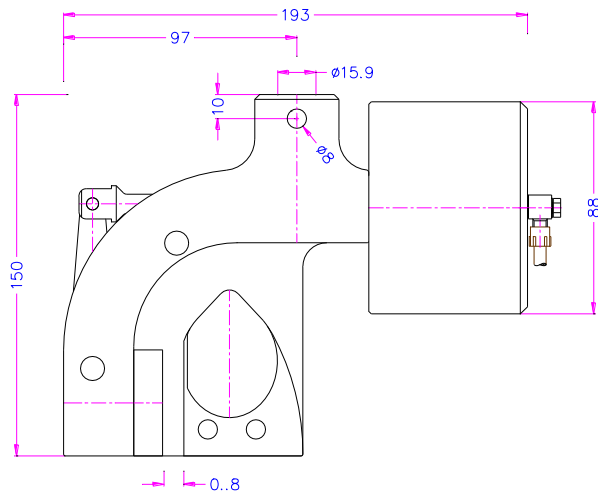
THS13m



THS13m+SSB



THS13g-5



THS13g-10



THS13g-10
Exchangeable stainless steel bollard



THS13k with TH205-PK23 adapter

Pneumatic accessories



TH205-1 Foot pedals

None locking: The jaws of the grip open by pressing the foot pedal and close after removing the foot from the pedal.
Scope of delivery: 1 pair of foot switches including tubes and fittings



TH205-2 Foot pedals

With locking function: The jaws of the grip open by pressing the foot pedal and remain opened after removing the foot from the pedal. The jaws close by pressing the pedal one more time.
Scope of delivery: 1 pair of foot switches including tubes and fittings



TH205-PR16bar Pressure regulator

Optional for TH205-1 or TH205-2
To adjust air pressure: 1-16 bar



TH205-3 Hand switches

With locking function: The jaws of the grip close by pulling the handle and remain closed. The jaws open by pushing the handle back.
Scope of delivery: 1 unit of hand switches including tubes and fittings



TH205-4-M5 Hand switches

Pneumatic micro – hand switches, tubes and fittings, M5 connection
With locking function: The hand switches are directly installed at the grips, 3/2 directional valve.
Only for single action rods with spring inside.
Scope of supply: 2 hand switches including tubes and fittings



TH216 Silent compressor for laboratories, oil-lubricated, with pressure reducer

Max pressure 16 bar; 230 V/50 HZ; noise level: 38 dB(A)
Motor: 0.13 kW; displacement: 17 l/min; tank size 3.5 l
Dimensions: 340x290x340 mm (L x W x H); weight 18 kg

Test videos:

<https://youtu.be/OhD11ia0QNE>

THS13k
3.25 N

<https://youtu.be/FxafHH129t8>

Sample slips

THS13g
Tensile test on glass fiber

<https://youtu.be/ruxqeN348SA>

Sample holds

Better clamping through twisting the glass fiber