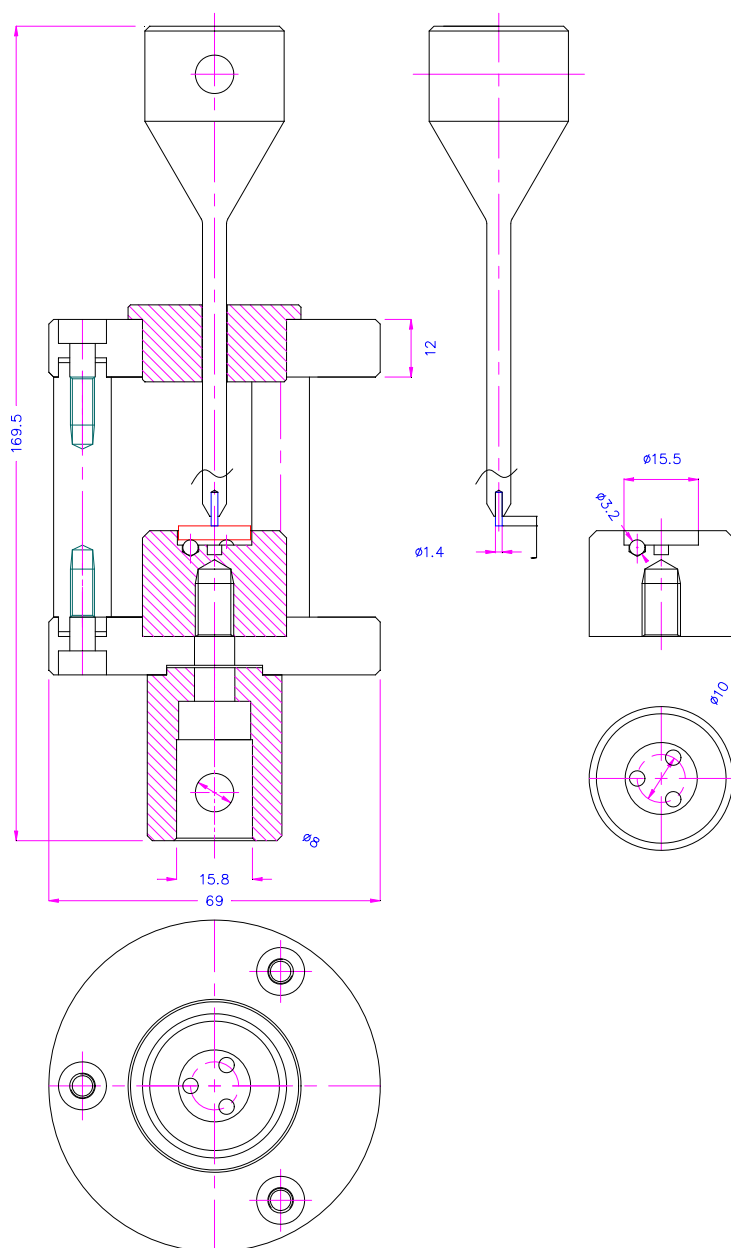


BIAXIAL FLEXTURE FIXTURE

for dental ceramic materials for fixed all-ceramic and metal-ceramic restorations and prostheses according to ISO 6872

Item no.:	THS1620-15.5-1.4-ISO6872
Max. load:	1 kN
Coupling:	Af159 mm Further couplings on request
Pin:	1.4 mm Ø, tungsten carbide
Circle Ø:	15.5 mm Ø
Body:	Stainless steel V2A, 1.4301
Temperature range:	-70° ... 280°C
Scope of supply:	1 fixture incl. 3 tungsten carbide balls 3.2 mm Ø

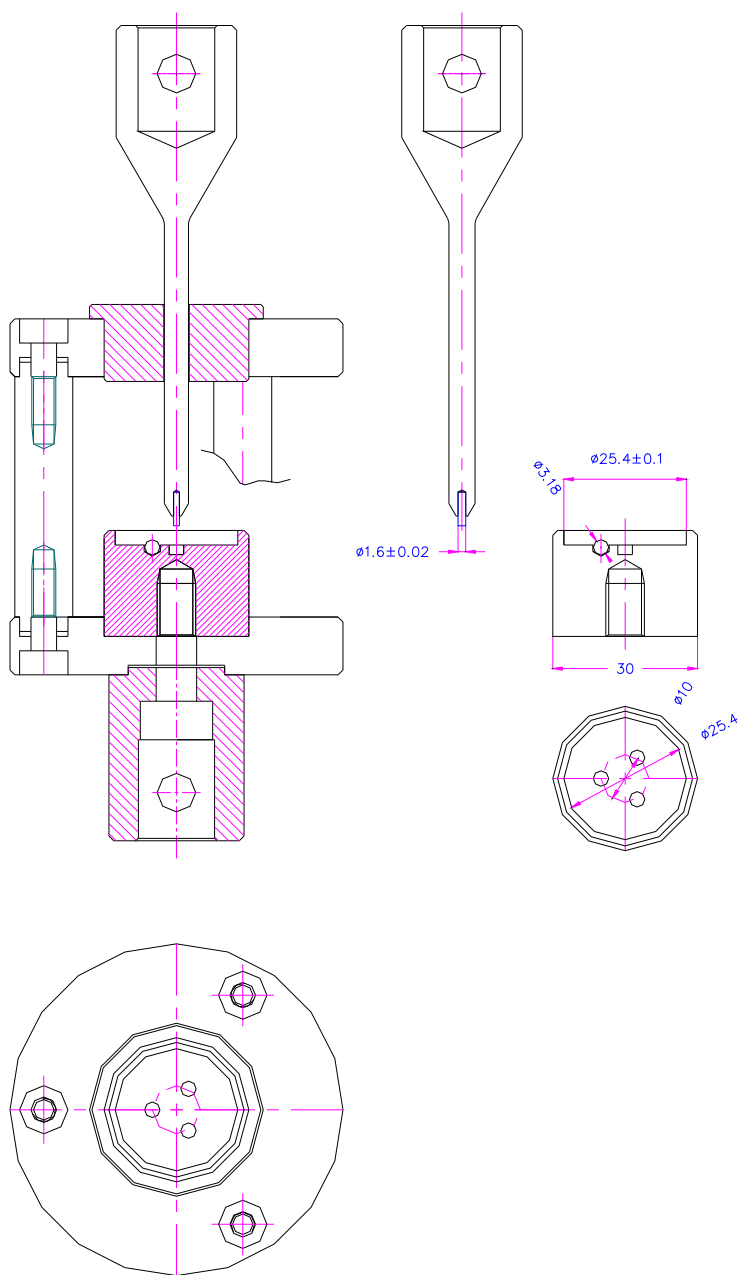


THS1620-15.5-1.4

BIAXIAL FLEXURE FIXTURE

to test biaxial flexure strength (modulus of rupture) of ceramic substrates according to ASTM F394

Item no.:	THS1620-25.4-1.6-ASTMF394
Max. load:	1 kN
Coupling:	Af159 mm Further couplings on request
Pin:	1.6 mm (0.063 in.) Ø, tungsten carbide
Circle Ø:	25.4 mm (1 in.) Ø
Body:	Stainless steel V2A, 1.4301
Temperature range:	-70° ... 280°C
Scope of supply:	1 fixture incl. 3 tungsten carbide balls 3.18 mm (0.125 in.) Ø



THS1620-25.4-1.6