

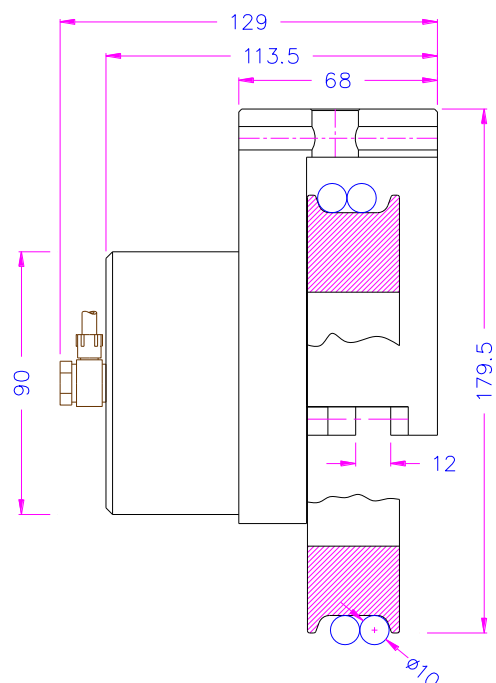
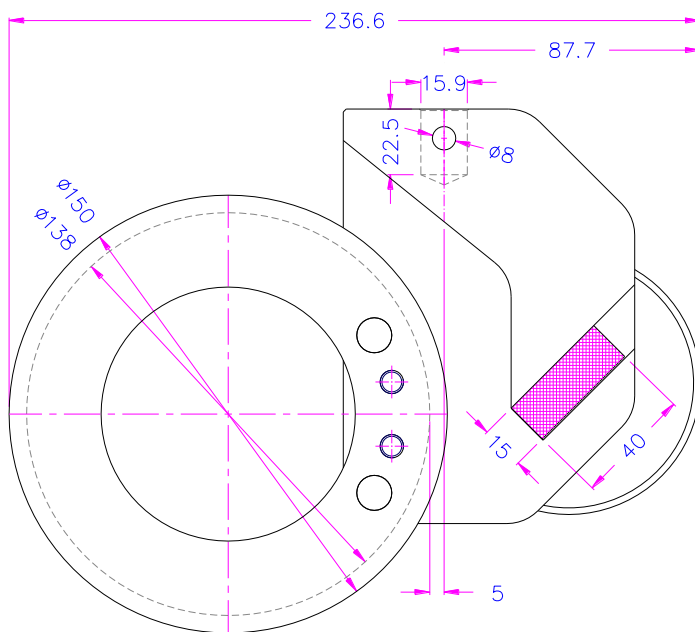
PNEUMATIC CAPSTAN GRIPS, 20 kN and 50 kN

Applicable for ropes and ribbons.

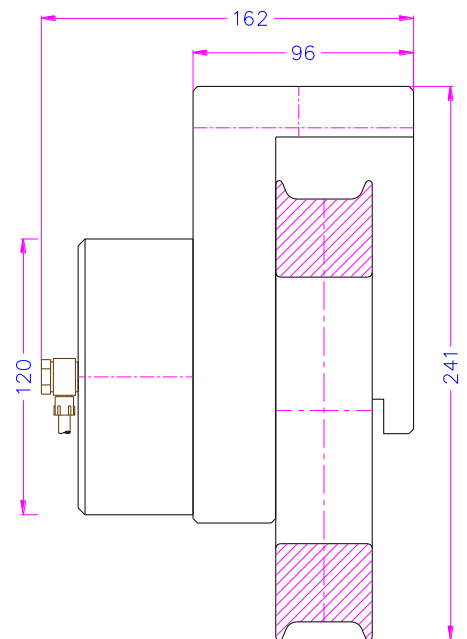
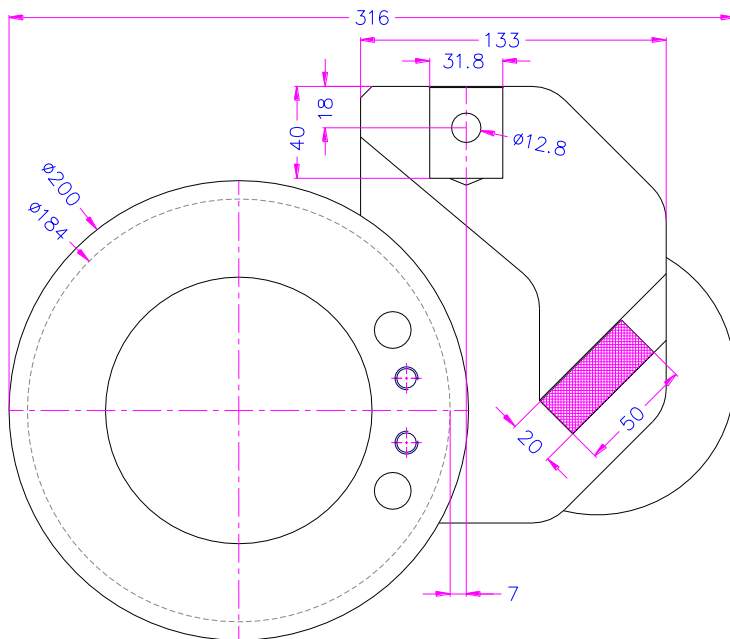
Depending on the coefficient of friction, specimen will be twisted one or more times around the capstan, before being fixed with clamping jaws.

The capstan rollers generate a slow notch free stress relief to prevent the breakage of the specimen in the clamping area.

Item no.:	THS185-20
Max. load:	20 kN
Coupling:	Af159. Further couplings on request.
Jaw opening:	0 – 12 mm
Jaw clamping surface:	15 x 40 mm; pyramid (serrated)
Min. sample length:	1250 mm
Pneumatic connection:	1/8" internal thread
Body:	Aluminium, anodized
Capstan:	Steel
Jaws:	Steel, hardened, nickel-plated
Temperature range:	0 ... +70°C Further temperature ranges on request
Weight:	4.7 kg per grip incl. jaws
Scope of supply:	1 pair of grips incl. jaws



Item no.:	THS185-50
Max. load:	50 kN
Coupling:	Af318. Further couplings on request.
Jaw opening:	0 – 20 mm
Jaw clamping surface:	20 x 50 mm; pyramid (serrated)
Min. sample length:	1650 mm
Pneumatic connection:	1/8" internal thread
Body:	Aluminium, anodized
Capstan:	Steel
Jaws:	Steel, hardened, nickel-plated
Temperature range:	0 ... +70°C Further temperature ranges on request
Weight:	11 kg per grip incl. jaws
Scope of supply:	1 pair of grips incl. jaws



Pneumatic accessories:



TH205-1 Foot pedals

None locking: The jaws of the grip open by pressing the foot pedal and close after removing the foot from the pedal.
 Scope of delivery: 1 pair of foot switches including tubes and fittings



TH205-2 Foot pedals

With locking function: The jaws of the grip open by pressing the foot pedal and remain opened after removing the foot from the pedal. The jaws close by pressing the pedal one more time.
 Scope of delivery: 1 pair of foot switches including tubes and fittings



TH205-PR16bar Pressure regulator

Optional for TH205-1 or TH205-2
 To adjust air pressure: 1-16 bar



TH205-3 Hand switches

With locking function: The jaws of the grip close by pulling the handle and remain closed. The jaws open by pushing the handle back.
 Scope of delivery: 1 unit of hand switches including tubes and fittings



TH205-4-1/8" Hand switches

Pneumatic micro – hand switches, tubes and fittings, 1/8" connection
 The hand switches are directly mounted at the grips. 3/2 directional valve
 Scope of supply: 2 hand switches including tubes and fittings



TH216 Silent compressor for laboratories, oil-lubricated, with pressure reducer

Max pressure 16 bar; 230 V/50 HZ; noise level: 38 dB(A)
 Motor: 0.13 kW; displacement: 17 l/min; tank size 3.5 l
 Dimensions: 340x290x340 mm (L x W x H); weight 18 kg