

THS265

Cutters

- CW- Type: Cutting die with ribbon steel for soft samples
- CH- Type: Steel cutting die for hard thick samples
- CSS-Type: Cutters for metal

Presses

- Manuel hand presses (p. 4)
- Hydraulic press (pp.5-6)

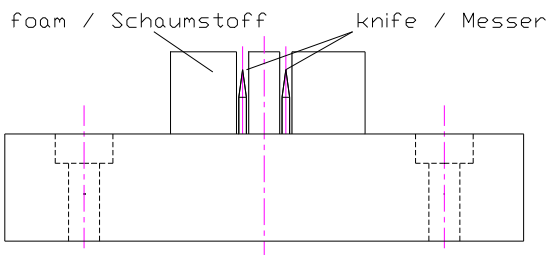


THS265 Cutters

THS265-CW

- Cutting die with ribbon steel
- For 0-3 mm thick samples of plastic, cardboard, foam, leather, textiles, etc.
- Foam to keep sample and remove from knife
- Wooden base frame, standard dimensions: 175 x 75 mm, 200 x 75 mm, 220 x 80 mm
- Scope of delivery: cutting die incl. compression plate

www.grip.de/G16/THS265/THS265-CW/



THS265-CH

- Hardened steel cutting die
- For 0-10 mm thick samples of plastic, cardboard, foam, leather, textiles, etc.
- Ejector + pin for press
- Scope of delivery: cutting die incl. compression plate



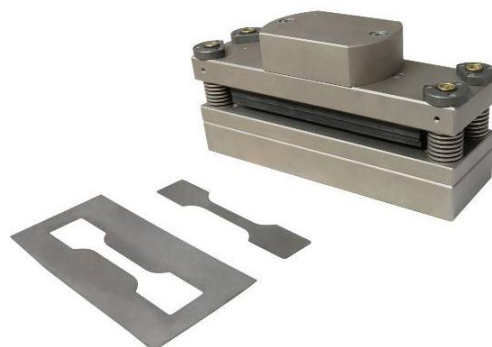
THS265-CSS-AxB-GDE

- Heavy cutter
- For thin metal foils, steel sheets, etc. up to max. 2 mm thick



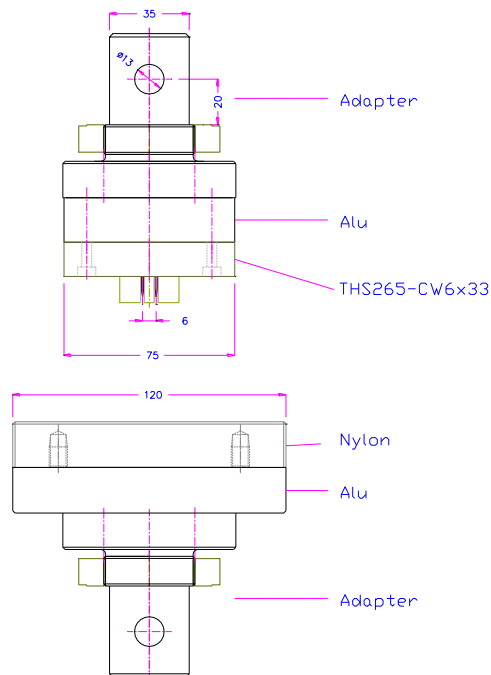
THS265-CSS-127x63-ISO6892-T2-GDE

Sample size 205x35x1mm cutting force 235 kN



Adapter + platens for direct use in tensile tester – no press needed

Including nylon counter plate (120x220 mm)



THS265-CW6x33+Am35

e.g. cutting die with ribbon steel + adapter 35 mm for direct use in tensile tester



THS265-CH6x33+sample ejector+Am317

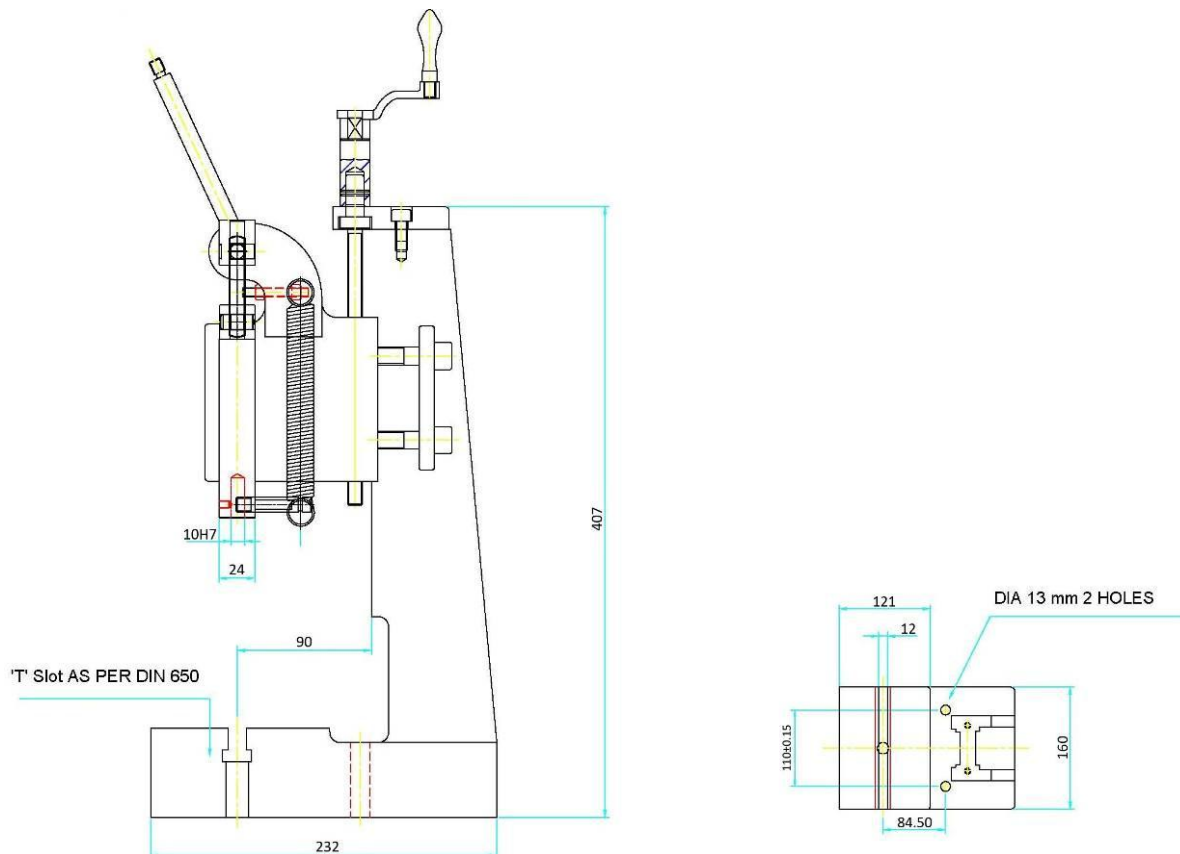
e.g. hardened steel cutting die + adapter 31.7 mm for direct use in tensile tester

Presses

Manuel hand presses

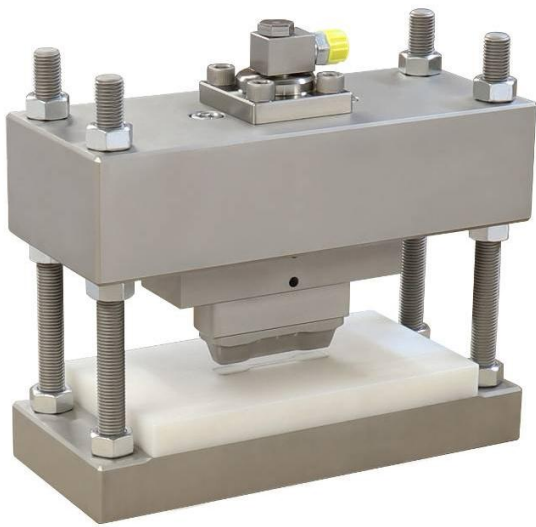
including nylon counter plate (120x220 mm)

Item no.:	THS265-P8	THS265-P17	THS265-P26
Compression force:	8 kN	17 kN	26 kN
Weight:	22 kg	35 kg	46 kg
Dimensions:	Ca. 160 x 230 x 410 mm	Ca. 170 x 270 x 415 mm	Ca. 140 x 310 x 475 mm
Handle length:	40 mm	60 mm	60 mm
Adjustable working height:	50 – 200 mm	75 – 180 mm	70 – 250 mm
Column height:	Ca. 410 mm	Ca. 415 mm	Ca. 475 mm
Base area:	Ca. 160 x 230 mm	Ca. 130 x 260 mm	Ca. 140 x 310 mm



THS265-P8

Hydraulic press 100 kN, 520 bar incl. pump



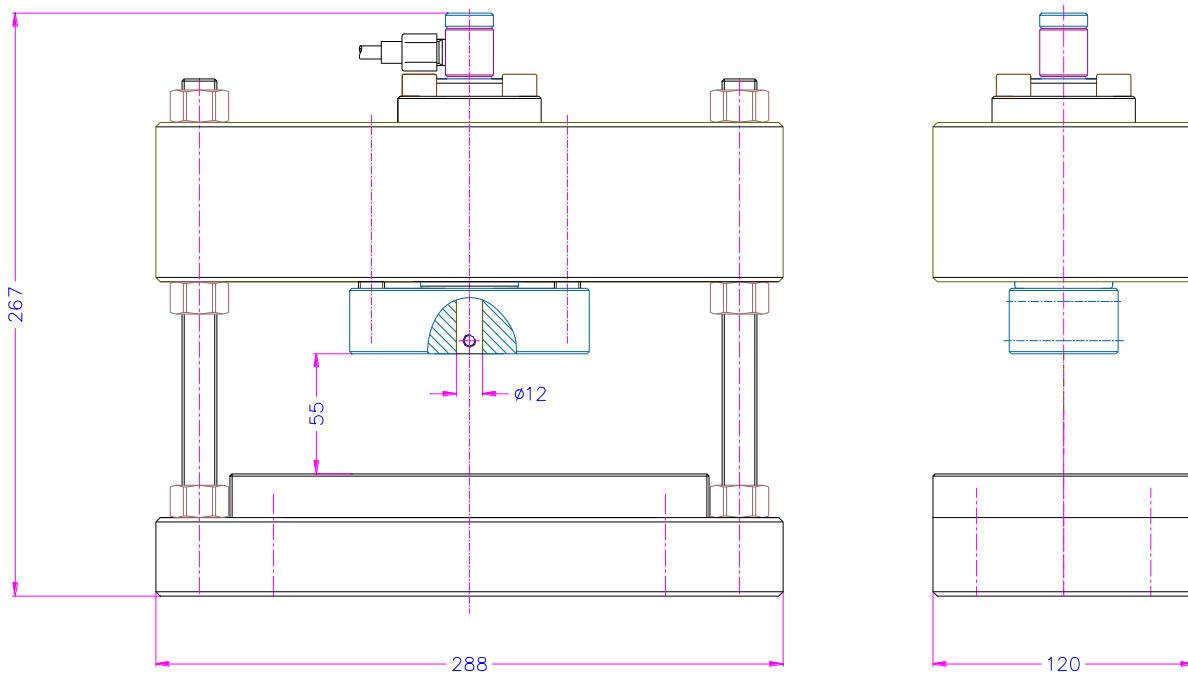
Item no.: THS265-HP100

Cutting height can be precisely adjusted to a sample height, so that dangerous openings can be avoided.

Cutting speed is slow making the process safer.

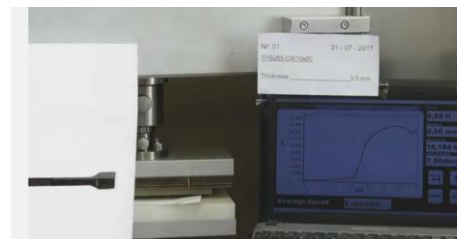
Max sample thickness 14 mm

 [https://youtu.be/d_OnLk7 -SA](https://youtu.be/d_OnLk7-SA)



Cutting force

If you do not know the cutting force you can send us your sample and we will determine the cutting force for you.



 <https://youtu.be/CXdLZ0sQygo>

Air hydraulic pump for THS265-HP100



Max. pressure: 700 bar
 Tank size: 0.9 l
 Output flow rate: 0.13 l/min at 700 bar; 0.5 l/min at 0 bar
 Dimensions: 450x190x190 mm (LxWxH)
 Weight: 9 kg
 Scope of supply: 1 pump incl. high pressure hose (1.8 m long)

Videos



Cutting copper stripe with P8 – 8 kN hand press

 <https://youtu.be/ghMYJog5O3g>



Cutting a square sample

 <https://youtu.be/D0ueSwq0nb4>

THS265-CWQ100