

Fixtures for wooden samples

Item no.: THS325-1-50x50-EN311

Fixture to test surface soundness of wood-based panels

Standard: According to DIN EN311

Max. load: 5 kN

Coupling: Af159, Af20
Further couplings on request

Material: Upper part: anodized aluminium
Lower part: anodized aluminium
Pad: stainless steel

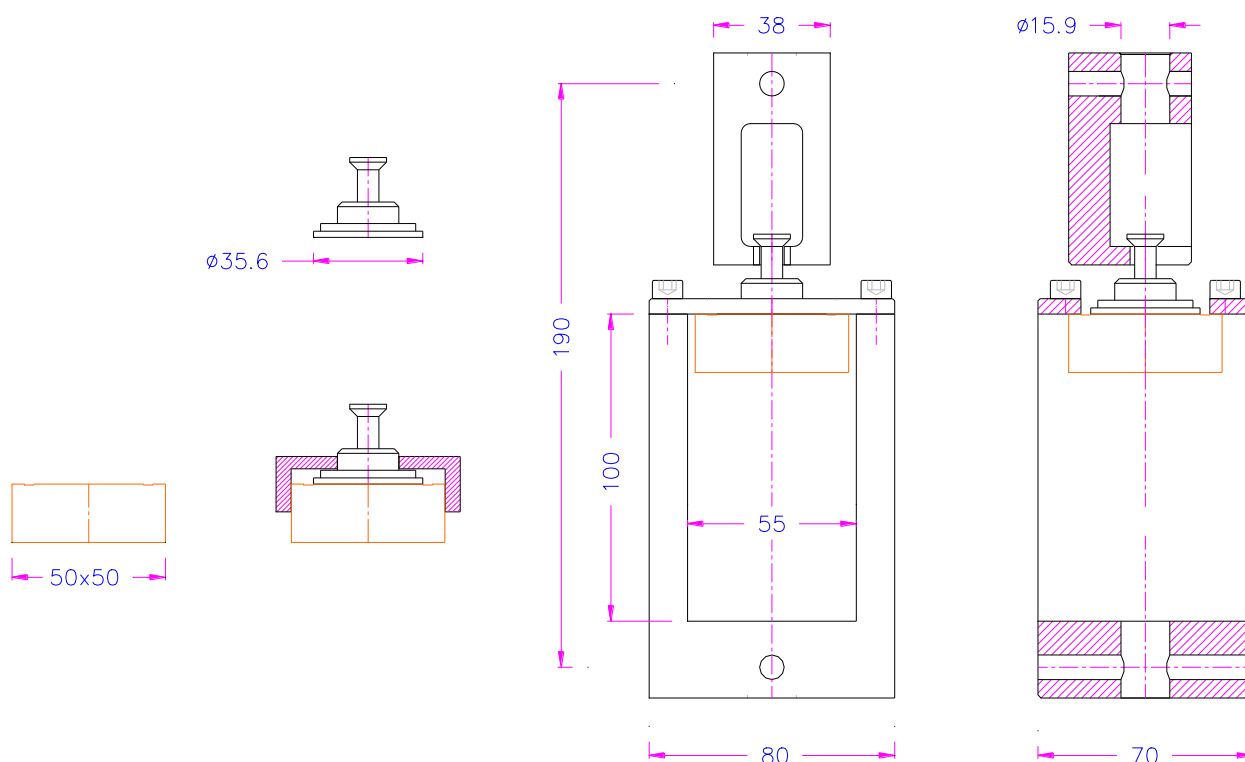
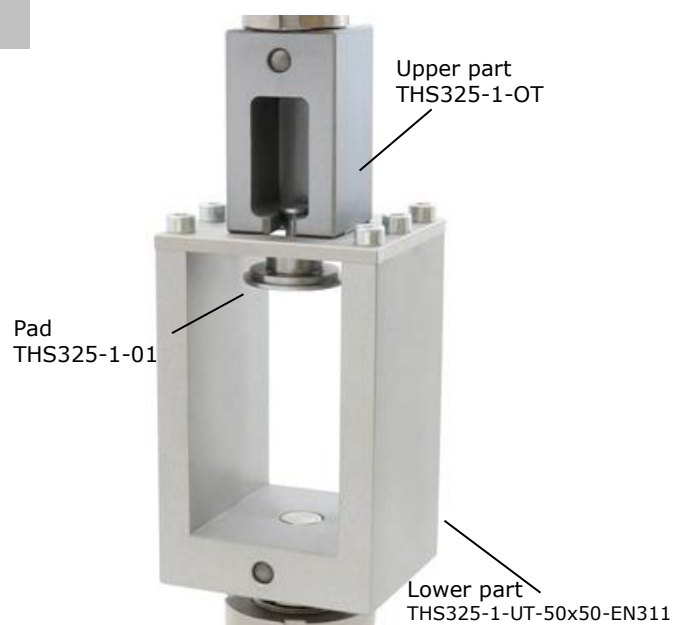
Temperature range: -70°C ... +180°C
Further temperature ranges on request

Weight: 2.3 kg (fixture excl. adapter)

Scope of supply: THS325-1 fixture consisting of:
- 1x upper part
- 1x lower part
- 1x pad

Available against a surcharge:

- Universal joint adapter/ cardan adapter (see THS327)
- 1 additional pad (THS325-1-01)
- Package of 10 additional pads (THS325-1-01-P10)
- Lower part THS325-1-UT-50x50-EN311



Item no.: THS325-2-EN320-Fig.3

Fixture to test resistance to axial withdrawal of screws for wooden samples according to DIN EN320 Fig. 3

For wooden plates ≥ 15 mm thick

Max. load: 2 kN

Coupling: Af159, Af20
Further couplings on request

Material: Upper part, lower part: stainless steel
Adapter: steel, nickel-plated

Temperature range: -70°C ... +180°C
Further temperature ranges on request

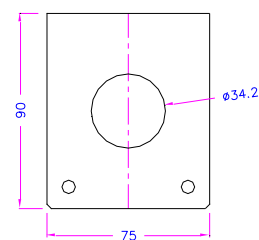
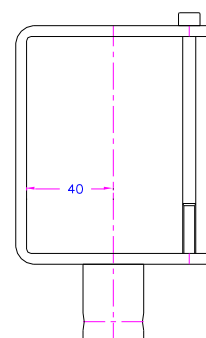
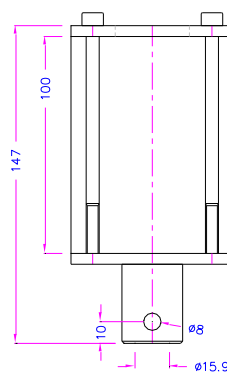
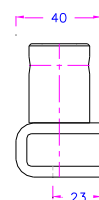
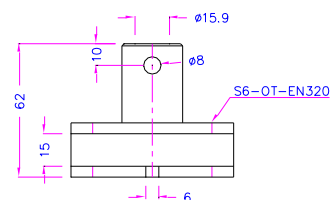
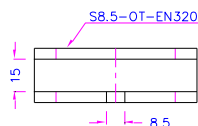
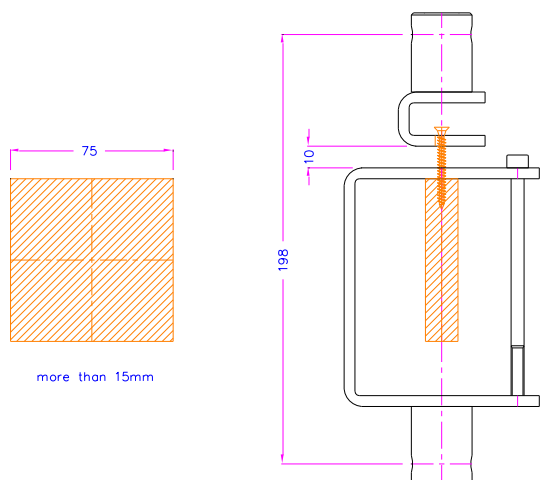
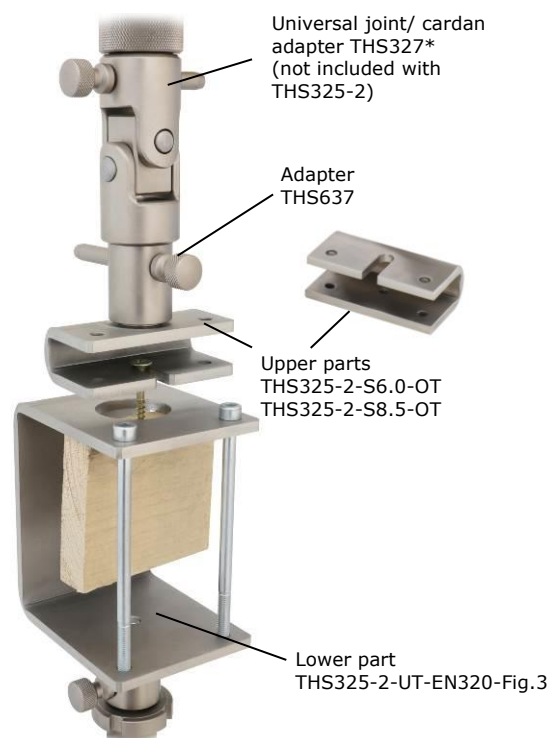
Weight: Ca. 1.5 kg (fixture excl. adapter)

Scope of supply: THS325-2 fixture consisting of:

- 2x upper parts with sample slots 8.5 mm and 6.0 mm
- 1x lower part
- 2x adapters THS637

*Available against surcharge:

- Universal joint adapter/ cardan adapter (see THS327)
- Lower part THS325-2-UT-EN320-Fig.3



Item no.: THS325-2-EN320-Fig.1

**Fixture to test resistance to axial withdrawal of screws
for wooden samples according to DIN EN320 Fig. 1**

For wooden plates <15 mm thick

Max. load: 2 kN

Coupling: Af159, Af20
Further couplings on request

Material: Upper part, lower part: stainless steel
Adapter: steel, nickel-plated

Temperature range: -70°C ... +180°C
Further temperature ranges on request

Scope of supply: THS325-2 fixture consisting of:

- 2x upper parts with sample slots 8.5 mm and 6.0 mm
- 1x lower part
- 2x adapters THS637

*Available against surcharge:

- Universal joint adapter/ cardan adapter (see THS327)
- Lower part THS325-2-UT-EN320-Fig.1

