

THS521

THS521-158-159-L200-D21.4-P



Pullrod for chamber

male adapter 15.8/8 5/8" with Teflon tube to grip

Female adapter 15.9/8 5/8" with pneumatic connector M5

rod length pin to pin 200mm
length can be from 70 to 600

Diameter of rod 21.4 mm

Material stainless steel



THS521-158-159-L400-D21.4-P-SCR

Scr Screen to protect loadcell from too much heat 200mm diameter

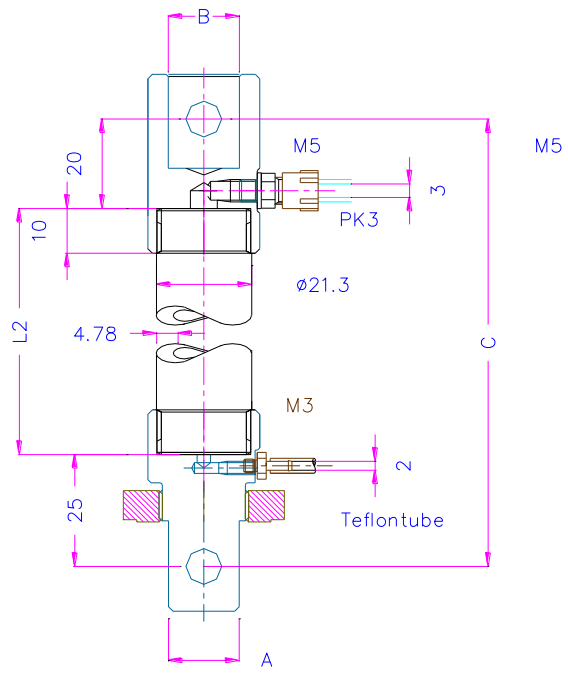


TK2-62-50-22

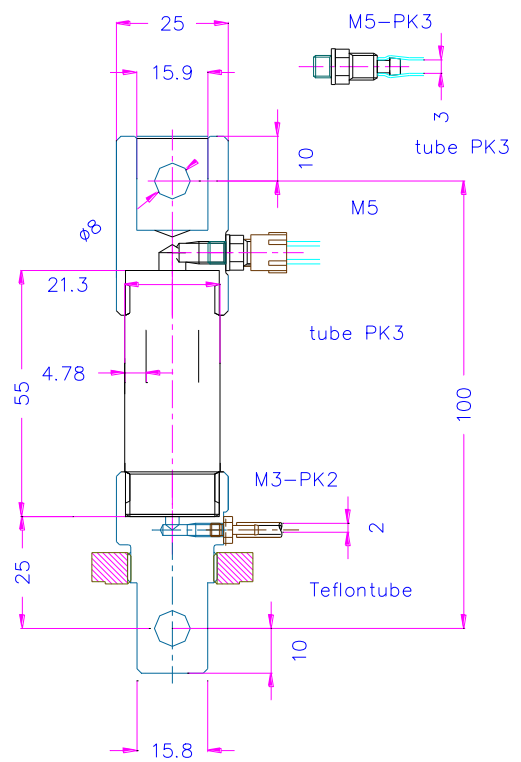
Teflon bush for chamber



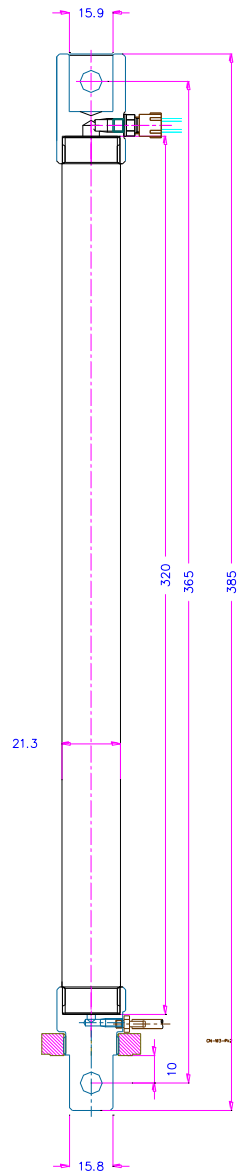
outer diameter 50mm
Inner diameter 22mm



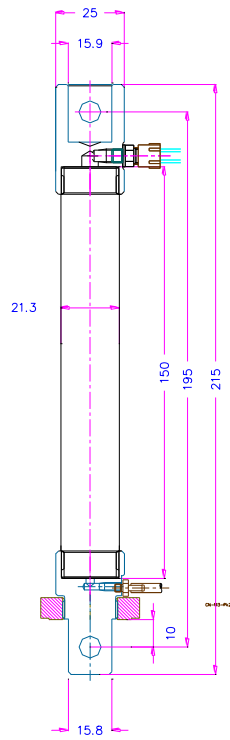
THS521-A-B-C



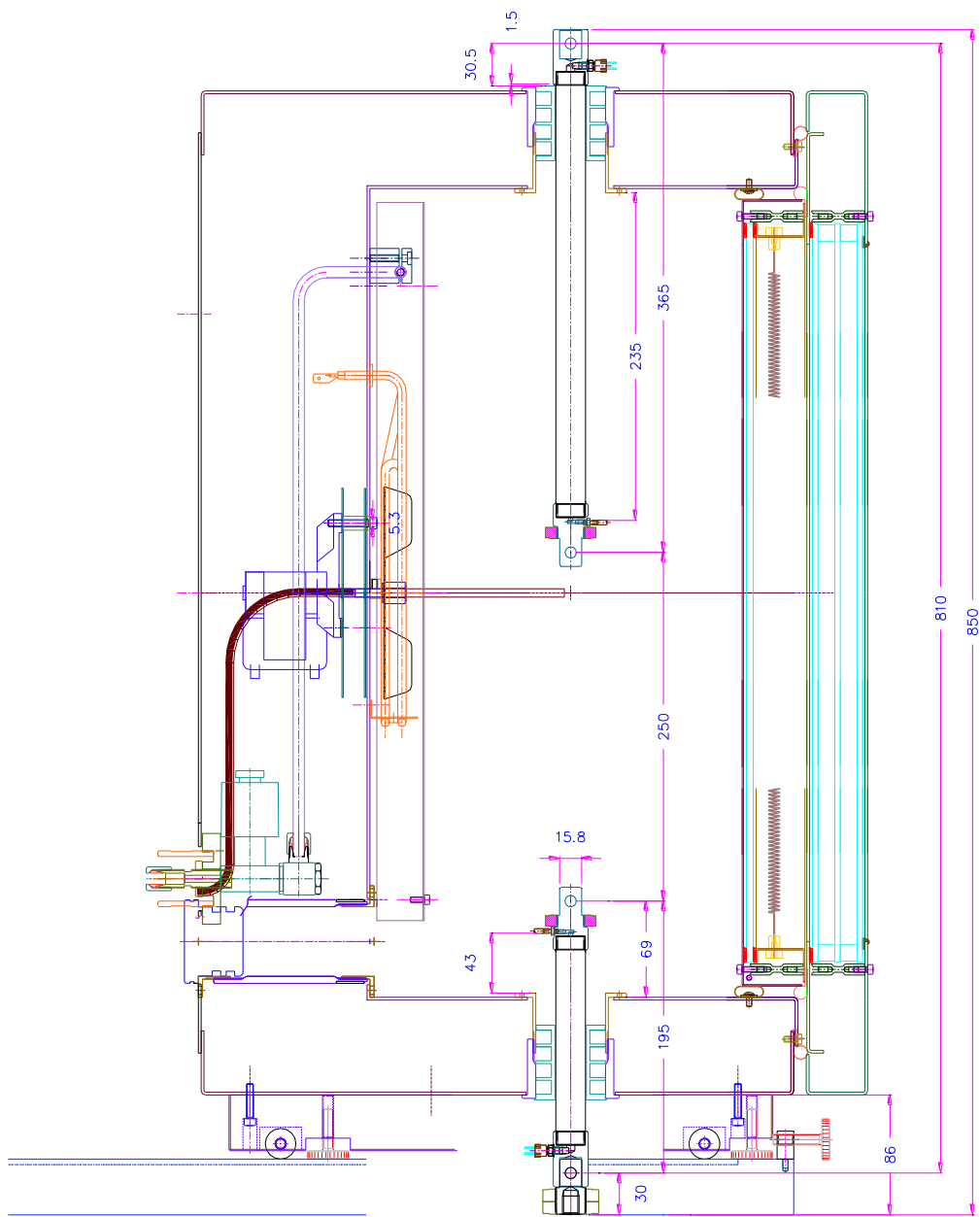
THS521-158-159-100



THS521-158-365



THS521-158-195

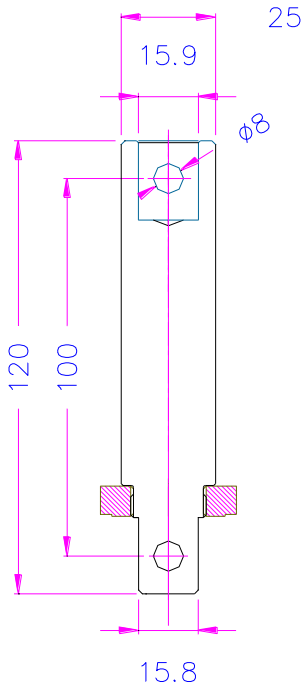


TH2700+THS521-158-365+195

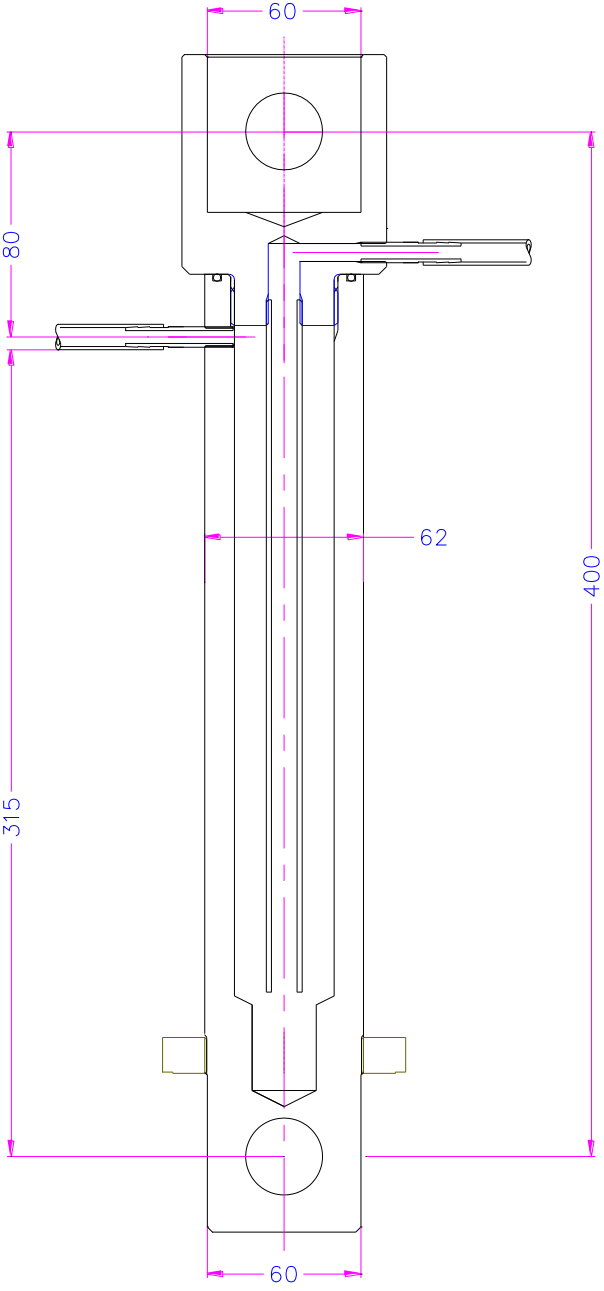


THS521-60-FL130TK115/M8-Lxx

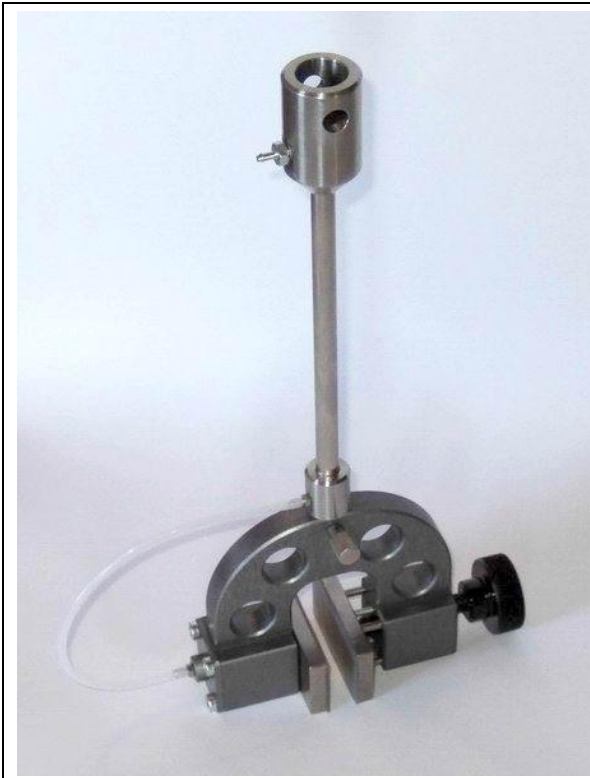
TH187-30-30-L100 short pull rods male 30 female 30 Pin to Pin 100mm



See also THS999 water cooled system



THS999-60-60-L400



THS521-8-159-L200-D8 + TH94