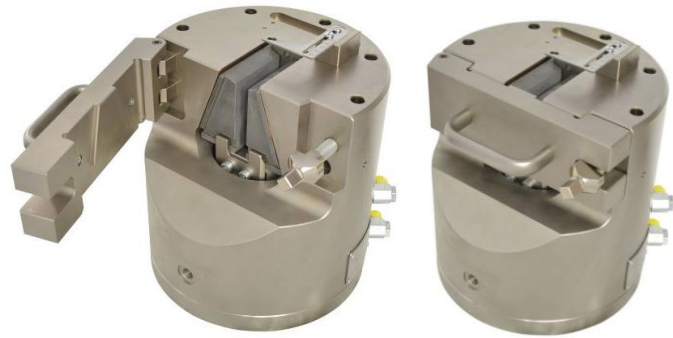


**THS681**  
**hydraulic wedge grip**

strong competitive  
 for steel samples up to 30mm

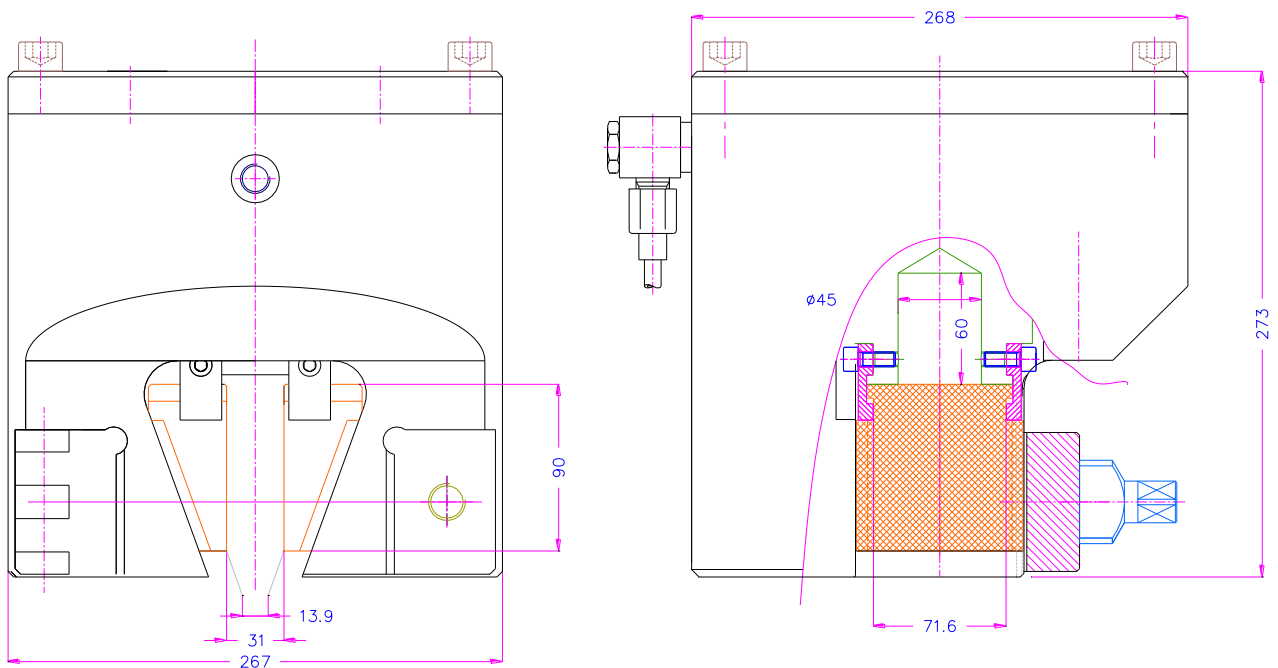
**250kN**  
 600kN clamping load

Single working vertical hydraulic  
 rod  
 weight of one grip 100kg



closing jaws makes big preload in axial direction  
 machine must drive to zero when second grip is closed  
 front door must be closed when load is switched on  
 incl. door switch to protect grip

THS681-B Jaws	Size 70 x 90mm 1 set = 4 parts hardened 58 HRC
THS681-BP12	Pyramid jaws 0-12mm
THS681-BP22	Pyramid jaws 10-22mm
THS681-BV15	Jaws for round samples diameter 5-15 mm
THS681-BV20	Jaws for round samples diameter 10-20 mm
THS681-BV30	Jaws for round samples diameter 20-30 mm



## Accessories:



### TH135-P2

Air hydraulic pump  
Max pressure: 350 bar, pressure ratio air -hydraulic 1:61  
2 valves for separate switching of the grips (opening, closing)  
Remote control with 2 switches; ~220V ; 0.1 A  
Dimensions LxWxH: 315mm x 250mm x 500mm); weight ~25 kg



### TH135-P2-G-a

Air hydraulic pump similar to TH135-P2 including:  
- Housing for noise reduction  
- Analogue pressure transducer: analogue signal 1 -10 V to adjust the clamping pressure from 40 to 400 bar  
Dimensions LxWxH: 720mm x 360mm x 630mm; weight: ~38 kg



### TH135-P2-2-G-a

Air hydraulic pump similar to TH135-P2 including:  
- 4 valves to lock the jaws at any required position  
- Housing for noise reduction  
- Analogue pressure transducer: analogue signal 1 -10 V to adjust the clamping pressure from 40 to 400 bar  
Dimensions LxWxH: 720mm x 360mm x 630mm; weight: ~50 kg