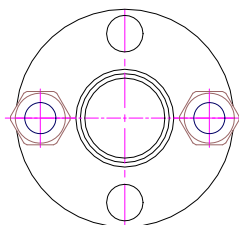
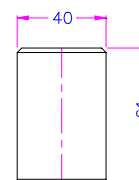
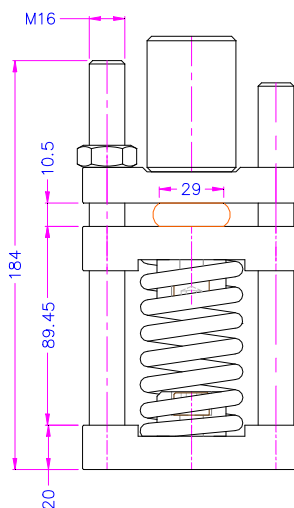
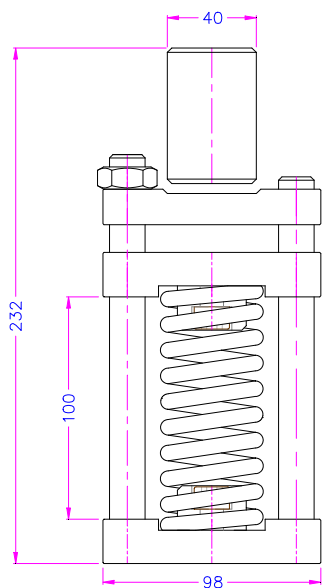


COMPRESSION SET FIXTURE

according to ASTM-D395 Test Method A. Standard Test Methods for Rubber Property — Compression Set – Compression Set Under Constant Force In Air.

The test specimen is placed in the center between the plates of the compression fixture. The 2 nuts of the fixture are tightened to apply constant compressive force.

Item no.:	THS757-60
Platens:	V2A stainless steel Roughness max. 250 µm (10 µin.)
Further parts:	Steel, nickel-plated
Temperature range:	-70...+250°C Further temperature ranges on request
Scope of delivery:	1 fixture incl. 1 weight (0.56 kg)



THS757-60

See also: ASTM-D395 Test Method B [THS757-20 Datasheet](#)

