

Screw Action Grip

Provide a simple and effective method to hold specimens
 Dual acting design, also for asymmetrical samples
 Jaws articulate and provide a self-alignment and a self tightening effect

Ordering information:

The grips are ordered in pairs but can also be ordered separately (0.5 pair). Grips and jaws need to be ordered separately.

We recommend the usage of an air screwdriver.



Item number	THS90
Force Tensile	50 kN
Clamping force	150 kN (500Nm*)
Temperature range	0°C - +180°C Other temperature ranges on request
Body	Steel, manganese phosphate coating
Weight	12 kg each grip (without jaws)
Scope of delivery	1 pair of grips

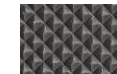
Jaws for THS90 Scope of delivery: 1 set = 4 jaws**

Item No.	Surface	Clamping surface H x W	Opening	Weight per pair
THS90-B	Blank (smooth) jaws	60 x 66 mm	0 – 30 mm	1.2 kg
THS90-BP	Pyramid jaws (serrated)	60 x 66 mm	0 – 30 mm	1.1 kg
THS90-BV	V-jaws	60 x 66 mm	6 – 30 mm Ø	1.1 kg
THS90-BW	Wave jaws	60 x 66 mm	0 – 30 mm	1.1 kg
THS90-BD	Diamond jaws	60 x 66 mm	0 – 30 mm	1.1 kg
THS90-BG	Rubber jaws	60 x 66 mm	0 – 28 mm	1.2 kg
THS90-B210	Blank (smooth) jaws	70 x 210 mm	0 – 10 mm	6.6 kg
THS90-BP210	Pyramid jaws (serrated)	70 x 210 mm	0 – 10 mm	6.6 kg
THS90-BW210	Wave jaws	70 x 210 mm	0 – 10 mm	6.4 kg

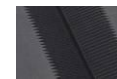
*Jaws with other dimensions and surface coatings on request
 ** we propose an pneumatic impact wrench with 650 Nm



Blank jaws
 • Suitable for own further treatments
 • Steel-blanks without coating



Pyramid jaws
 • Pyramids 1.2x45°
 • Hardened steel 58HRC manganese phosphated



V-jaws
 • For all kinds of round samples
 • Tooth pitch 1.2 mm
 • Hardened steel 58HRC manganese phosphated



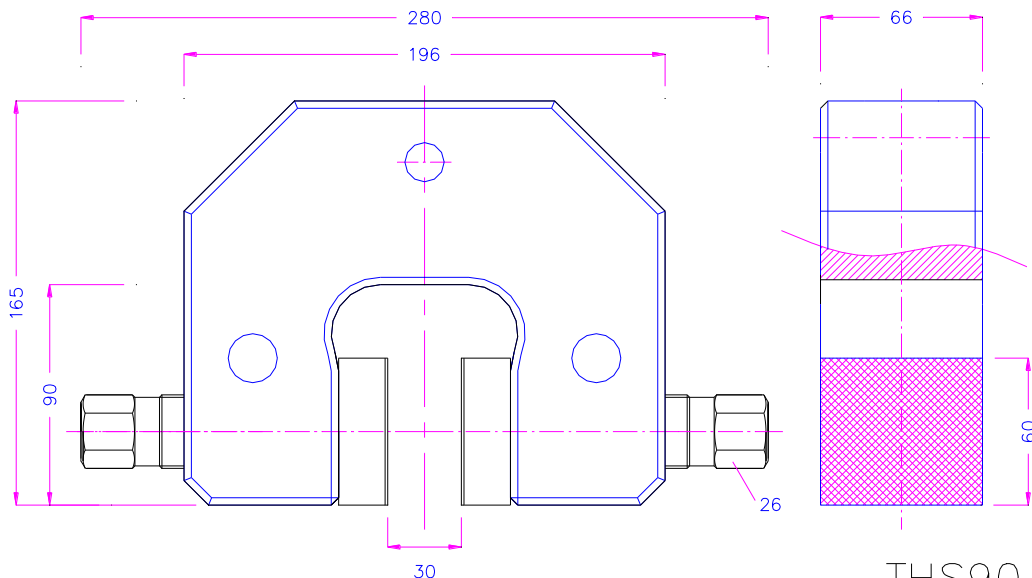
Wave jaws
 • For flexible materials
 • Wave 5 mm
 • Hardened steel 58HRC manganese phosphated



Diamond jaws
 • Clamping surface coated with synthetic diamonds
 • Nickel-plated



Rubber jaws
 • 1 mm rubber coating (NBR)
 • Nickel-plated



THS90

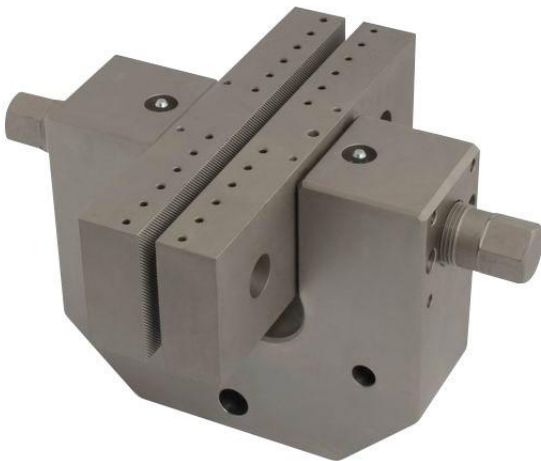


Nickel coating for chamber usage



THS90-S70

70 mm extra wide opening



THS90+BP210-Ni

Big jaws 70x210 mm
Nickel-plated

See also www.grip.de/G06