



TK software for temperature chambers

User guide





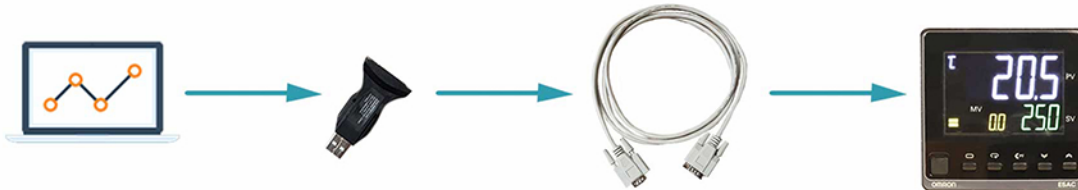
Getting started

After starting the software,

First we have to connect the software with the temperature regulator.

* There is a regulator already installed in our temperature chambers.

Now connect the chamber with your computer via USB.



How to connect the software

To connect the software with the regulator the communication settings on both devices have to be equal.

Software configuration settings



COM port configuration

COM port:

Baud rate:

Stop bits: 1 1,5 2

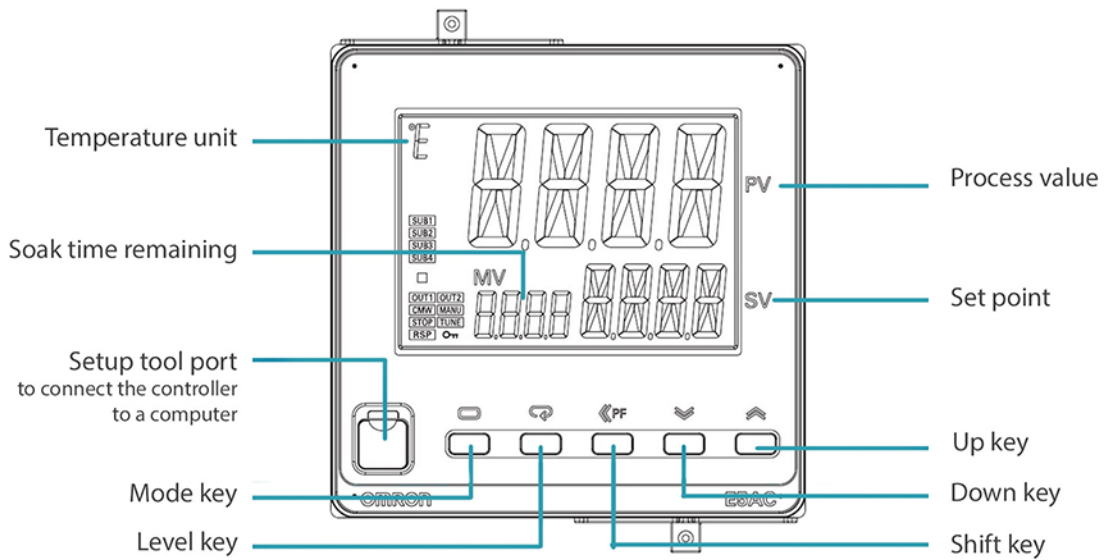
Data bits: 4 5 6 7 8

Parity: None Mark Odd Space Even





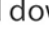

Flow control: None DTR/RTS Xon/Xoff

*To configure the software, we advise you to use the settings as displayed above.

Regulator configuration settings



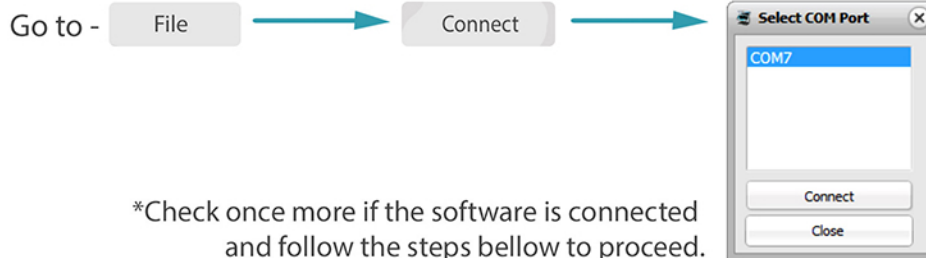
Configuration steps,

- 1__ Press and hold the mode key  for 3 seconds.
- 2__ Press the mode key  once.
- 3__ Now press the level key. 
- 4__ on this screen you can change the bps rate by pressing the up  and down  keys.
*we advice to set this value to 38,4 bps.
- 5__ To complete the settings and to exit the options mode, press and hold the mode key  for 3 seconds.

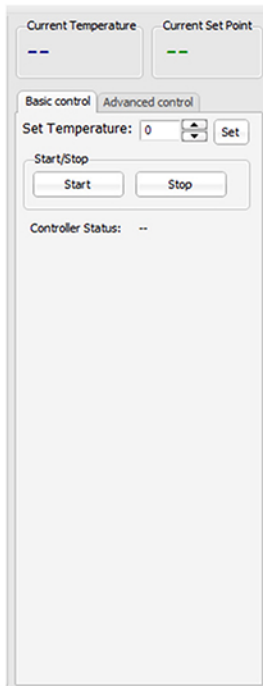


*Note -The software is only compatible with OMRON E5AC regulator.

Now connect the software



Introduction to settings



Basic control

Set temperature - Here you can enter the temperature you want to achieve.

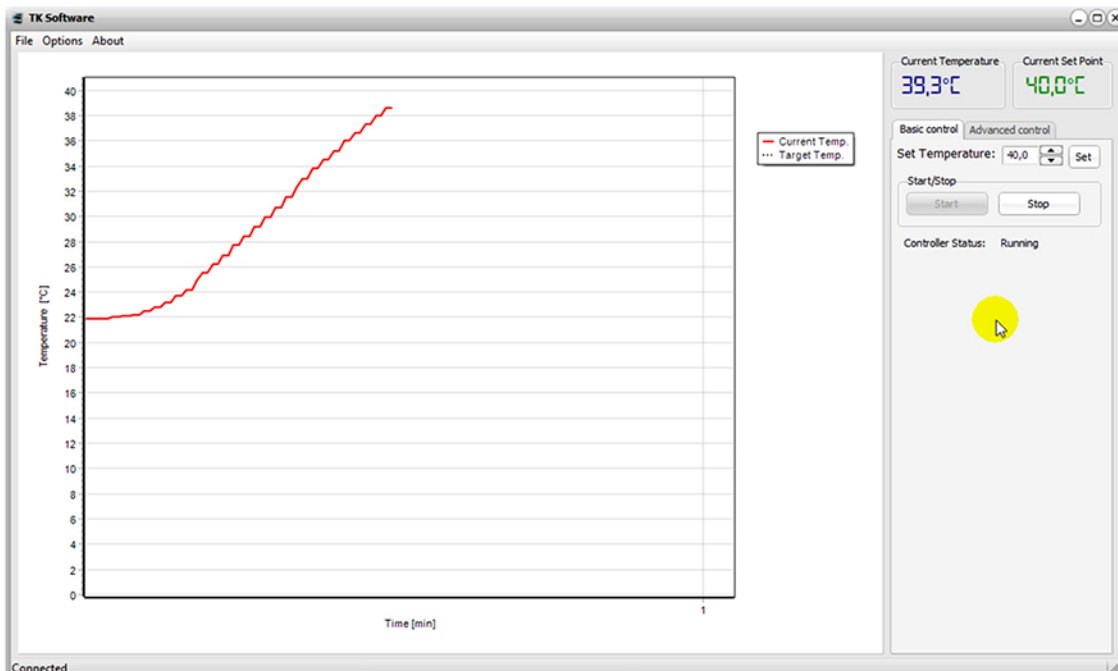
Click - **Set** → **Start**

To end the process click → **Stop**

Now you can see the current temperature under and on the chart.

Current Temperature
39,3°C

*Note that once the process is stopped, the temperature decreases again.



Advanced control

Here, you can set a dynamic temperature pattern.

Basic control		Advanced control	
Temp. °C		Hold Time [min]	
T1:	20,0	t1:	180
T2:	27,0	t2:	180
T3:	34,0	t3:	180
T4:	41,0	t4:	180
T5:	48,0	t5:	180
T6:	55,0	t6:	180
T7:	62,0	t7:	180
T8:	69,0	t8:	180
T9:	76,0	t9:	180
T10:	83,0	t10:	180
T11:	90,0	t11:	180
T12:	97,0	t12:	180
Update SP		Total: 2160 Minutes	

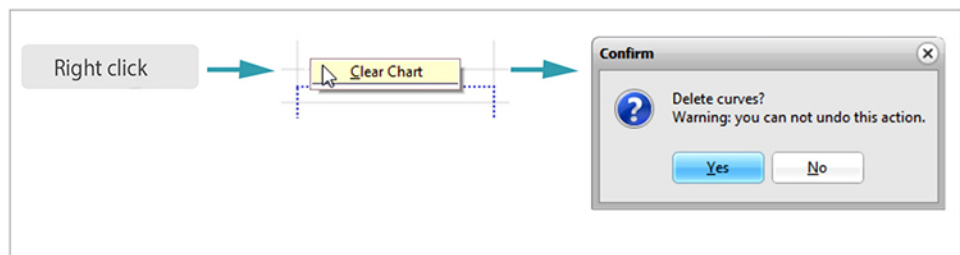
Info Panel
 Total Cycles: 12 (77)
 Cycle Remaining Time: 146 Minutes
 Finishing in: 10:46 Minutes
 Controller Status: Running
 Show Target Temperature Curve

Start/Stop

Fill out the temperature and duration information as you desire.

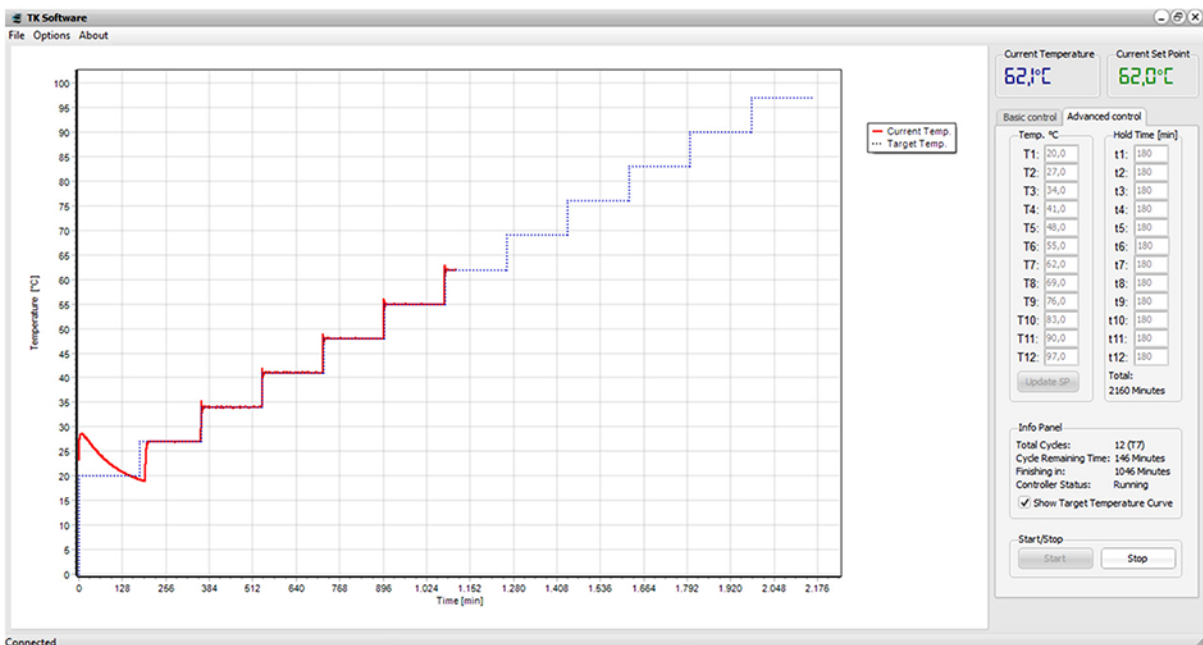
Now, click 

*Always remember to clear the chart before starting a new test.



Now, click 

You can see information regarding the ongoing test on the info panel.

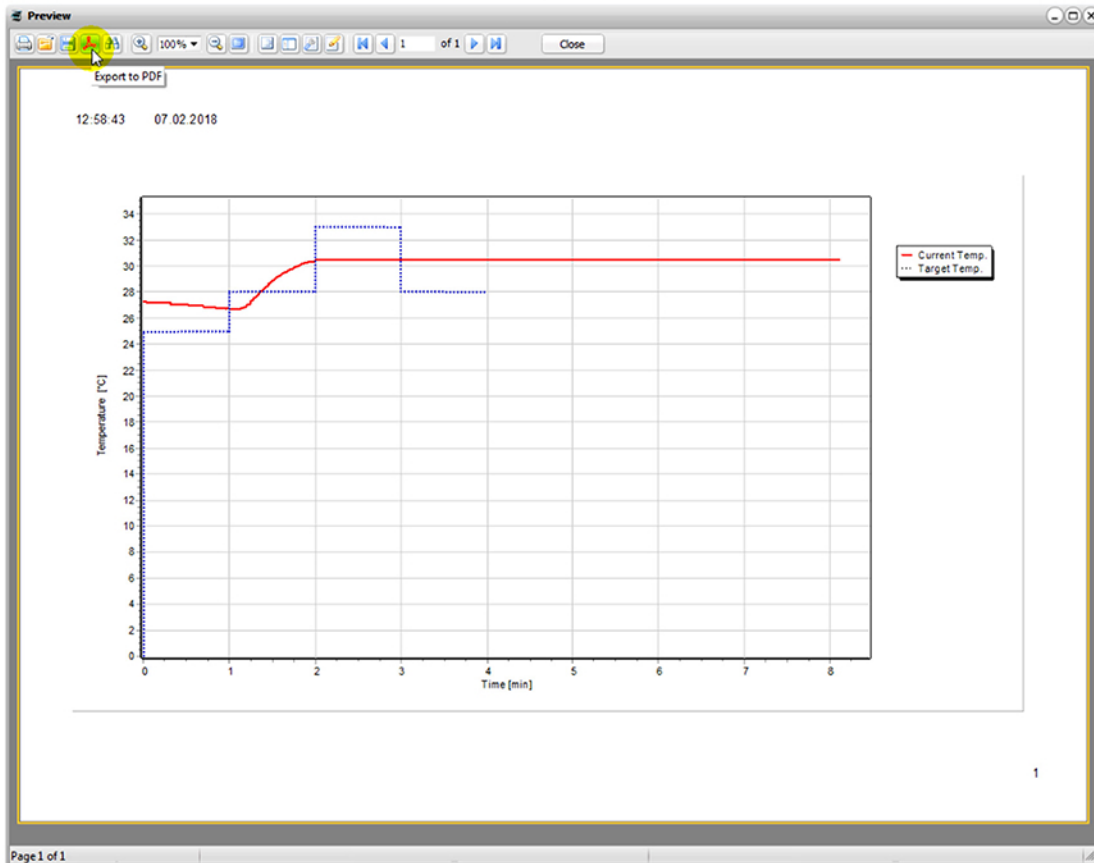


Click 



How to export the chart

With this software you can export the charts in PDF format.



*Here you can export, save, print and edit the chart.



System specifications

Operating system_____	Windows XP, Vista, Windows7, Wondows8/8.1, Windows 10
Processor_____	1 GHz or faster
RAM_____	1 GB for 32-bit or 2 GB for 64-bit
Display_____	800 x 600 or higher
Hard disk_____	2 GB of free space
I/O Ports_____	1 x USB 2.0
Compatible with_____	OMRON E5AC

Software download link_____ <http://www.grip.de/G21/software/>