

BV


BP

BW

B

BD

Standard jaws:

<p>Blank jaws</p> <ul style="list-style-type: none"> - For flat samples - Applicable for own further treatments - Steel blanks without coating - Nickel-plated 	
<p>Pyramid jaws</p> <ul style="list-style-type: none"> - For flat samples - Pyramids 1.2x45° - Hardened steel 58 HRC - Nickel-plated 	
<p>Wave jaws</p> <ul style="list-style-type: none"> - For flexible materials - Wave 5 mm - Hardened steel 58 HRC - Nickel-plated 	
<p>Rubber jaws</p> <ul style="list-style-type: none"> - For flat samples - 1 mm rubber coating (NBR) - Nickel-plated - Temperature range -30°C ... +70°C 	

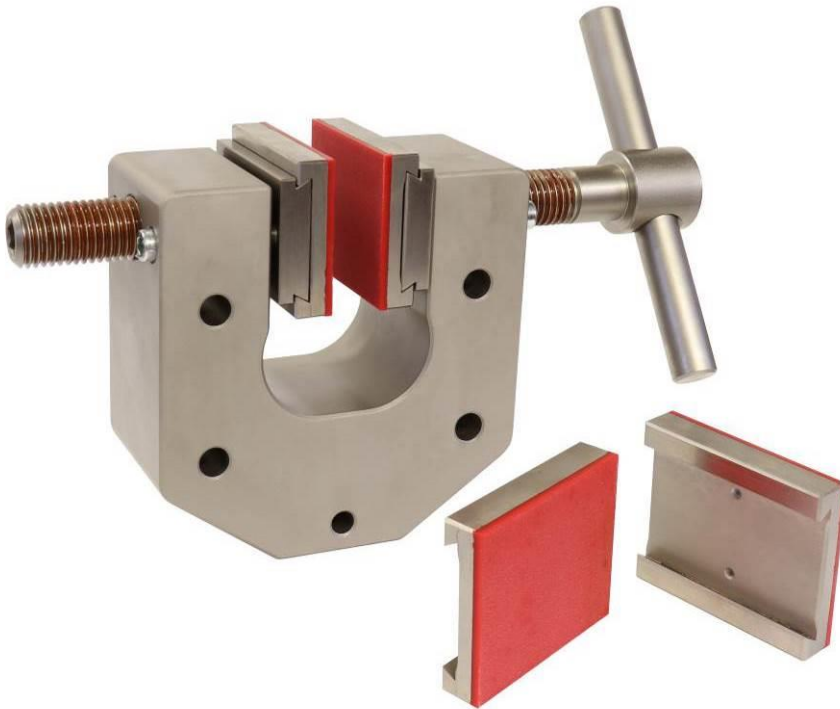
<p>Diamond jaws</p> <ul style="list-style-type: none"> - For flat samples - Clamping surface coated with synthetic diamonds D91 (170/200 mesh) - Nickel-plated 	
<p>V jaws</p> <ul style="list-style-type: none"> - For round samples - Tooth pitch 0.8 mm - Hardened steel 58 HRC - Nickel-plated 	
<p>Line-contact jaws</p> <ul style="list-style-type: none"> - Radius 3 - Nickel-plated 	



Examples for special jaws:

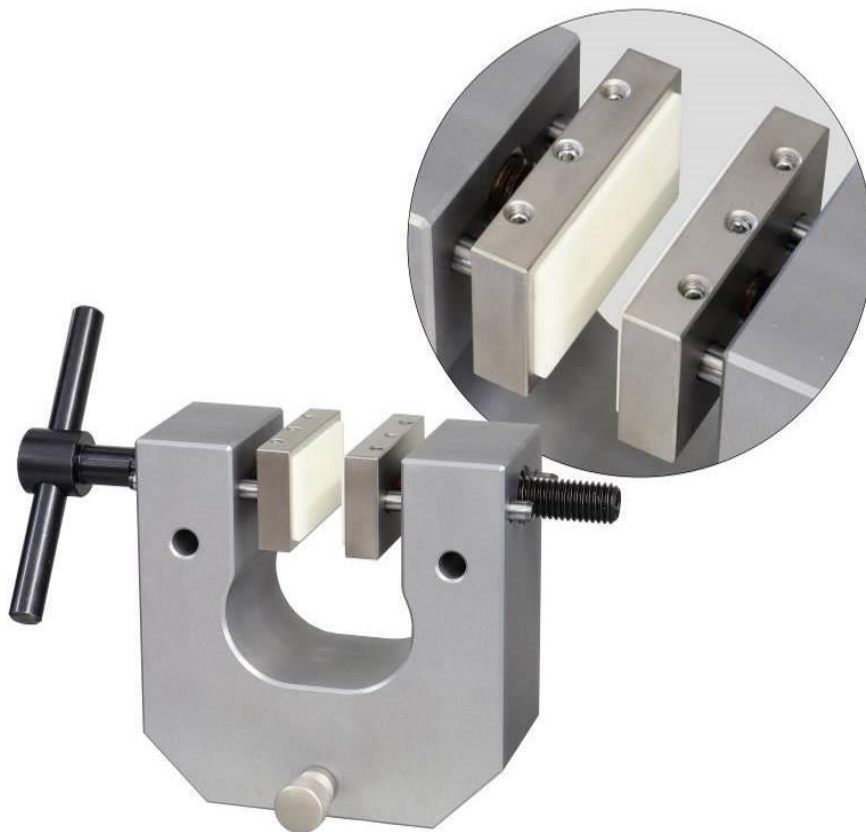
Vulkollan coating, excellent mechanical and dynamic load-bearing characteristics

- Hardness 75 Shore (35 – 90 Shore possible)
- Max. temperature +80°C
- Min. thickness 3 mm



Roller to apply adhesive samples for peel strength tests

Ceramic-coated jaws for electric insulation



Needle jaws for thick samples, like insulation foam or non-woven insulation

