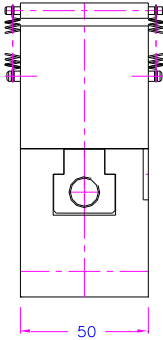
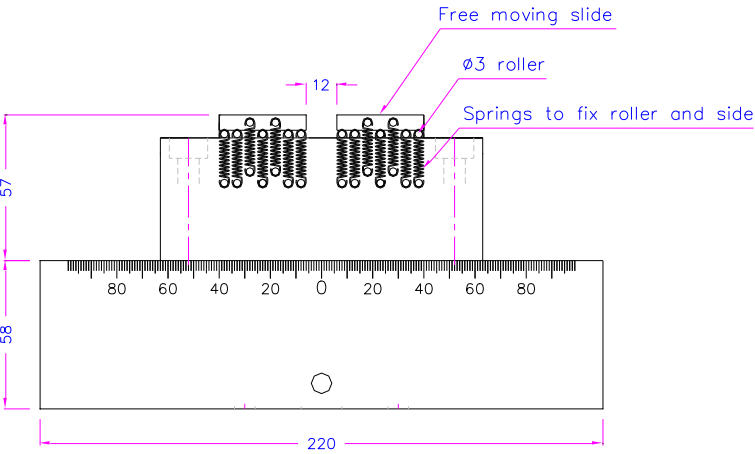
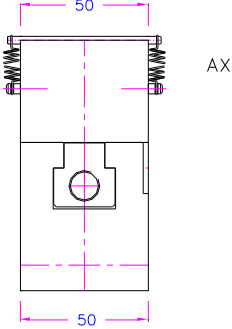
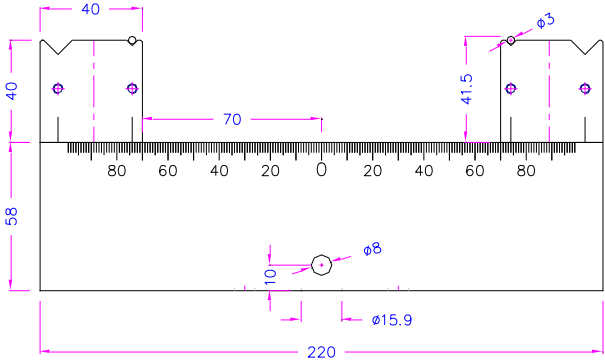
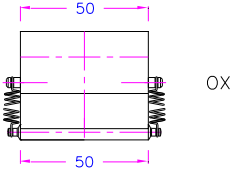
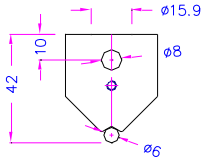


SHORT-BEAM STRENGTH TEST FIXTURE

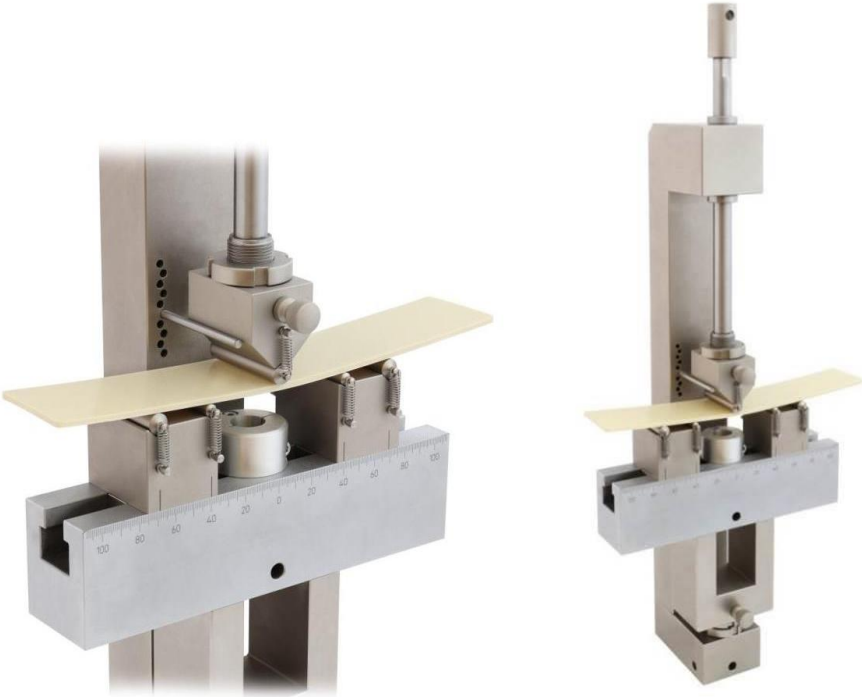
for polymer matrix composite materials and their laminates according to ASTM-D2344 Fig.5 and Fig.6

Item no.:	TH103-ASTM-D2344
Max. load:	50 kN
Coupling:	Af159 or Af20. Further couplings on request.
Rollers:	6 mm Ø (top) and 3 mm Ø (bottom)
Material:	Steel, nickel-plated
Temperature range:	0 ... +70°C Further temperature ranges on request
Weight:	8 kg
Scope of supply:*	1 bending bar, 1 top and 2 bottom anvils incl. rollers for flat laminate and 1 bottom support with free-moving slides for curved beam

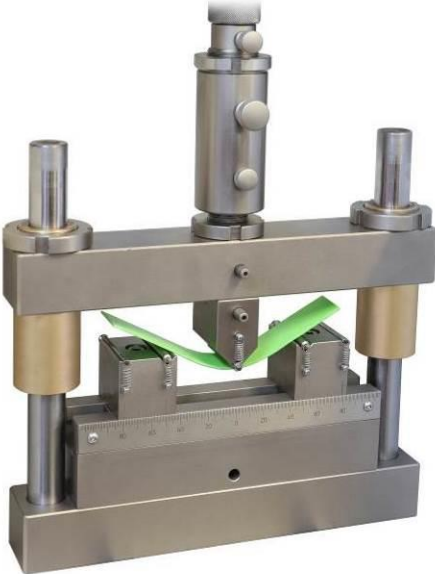


*on request expandable to versions according to other similar test standards, e.g. DIN EN ISO14130, ASTM-D790, ASTM-D7264, DIN EN2563, DIN EN ISO178, etc.

Examples of versions with guides:



TH103-ASTM-D2344+THS884



TH103-ASTM-D2344+GDE