

**CAPSTAN ROPE GRIPS**

TH170 grips are applicable for testing ropes with max. load from 50 kN to 300 kN.

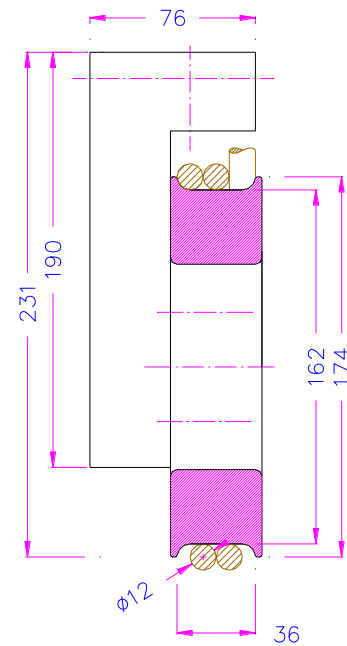
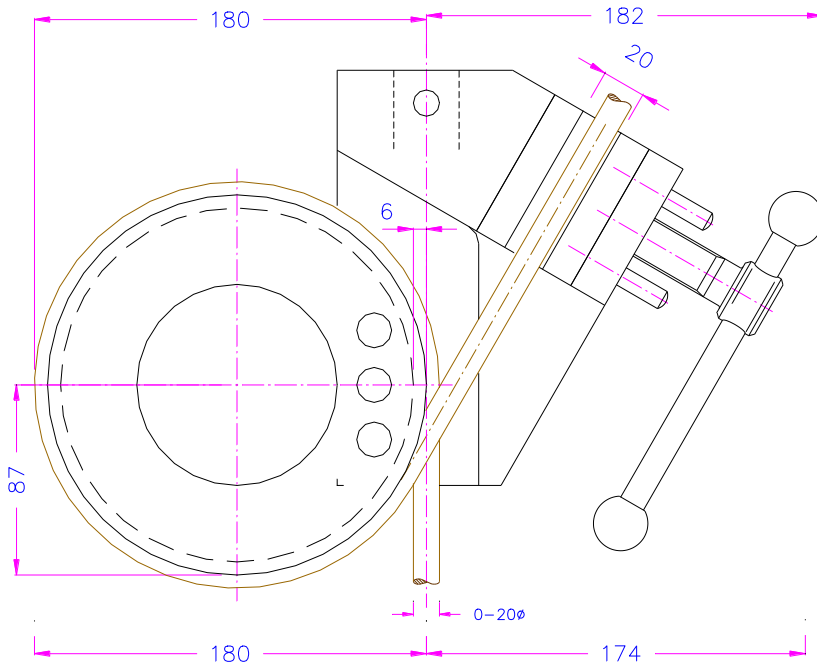
Depending on its friction coefficient, the specimen will be twisted one or more times around the guide roller, before being fixed with clamping jaws.

The guide rollers generate a slow notch free stress relief to prevent the breakage of the specimen in the clamping area.

Available versions:

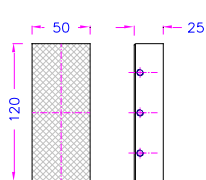
- Manual and hydraulic versions
- 50 kN, 100 kN, 150 kN, 200 kN versions
- Modified diameter of the guide roller

<b>Item no.:</b>	<b>TH170-50</b>
Max. load:	50 kN
Coupling:	Af30 or Af318. Further couplings on request
Recommended rope Ø:	Max. 20 mm Ø
Minimal specimen length:	1500 mm
Jaws surfaces:	Pyramid jaws (1.2 x 45°), wave jaws, Blank (smooth) jaws, 58HRC Other surfaces on request
Jaws clamping surface HxW:	70x30 mm
Bollard Ø:	162 mm Ø
Temperature range:	0 ... +70°C Further temperature ranges on request
Weight:	13.9 kg
Scope of delivery:	1 pair of grips without jaws

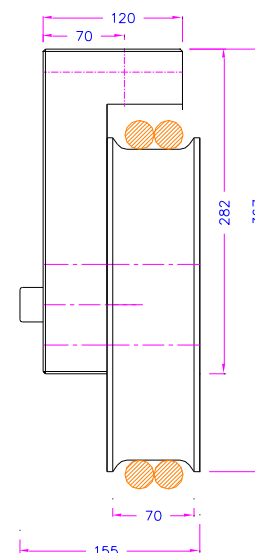
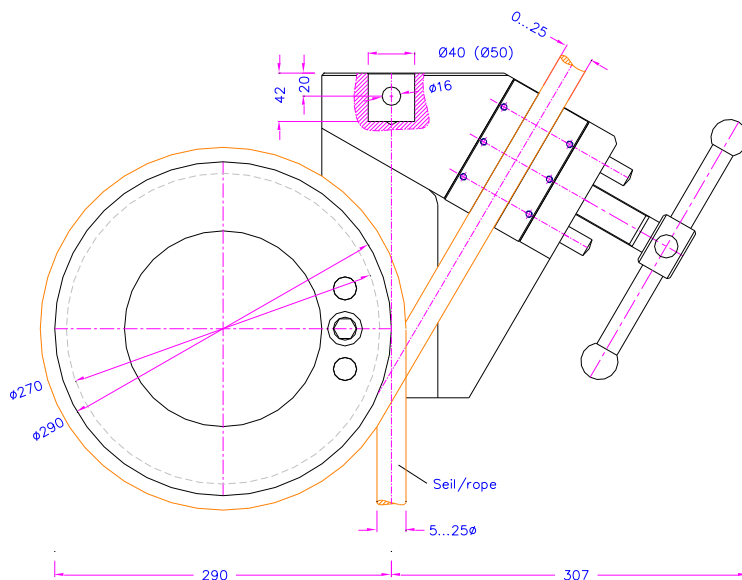


TH170-50

<b>Item no.:</b>	<b>TH170-100</b> <b>TH170-150</b>
Max. load:	100 kN / 150 kN
Coupling:	Af40 (TH170-100) Af50 (TH170-150) Further couplings on request
Recommended rope Ø:	Max. 25 mm Ø
Minimal specimen length:	2600 mm
Jaws surfaces:	Pyramid jaws (1.2 x 45°), Blank (smooth) jaws, 58HRC Other surfaces on request
Jaws clamping surface HxW:	120x50 mm
Bollard Ø:	270 mm Ø
Temperature range:	0 ... +70°C Further temperature ranges on request
Weight:	50 kg
Scope of delivery:	1 pair of grips without jaws



TH170-100-24-BP-Jaws



TH170-100-Af40  
TH170-150-Af50

### Jaw clamping surfaces:

Pyramid (serrated) jaws	Wave jaws

Further versions:

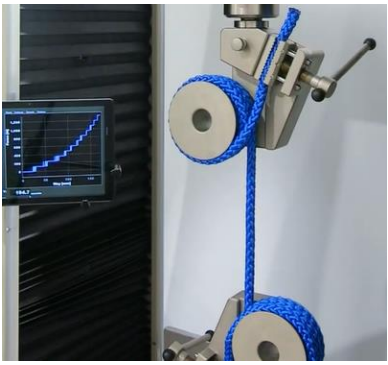
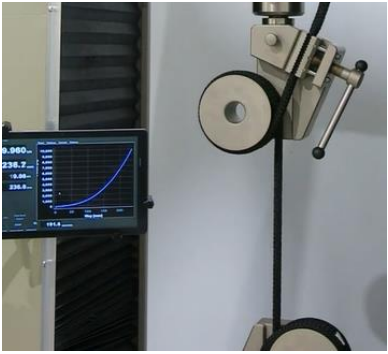
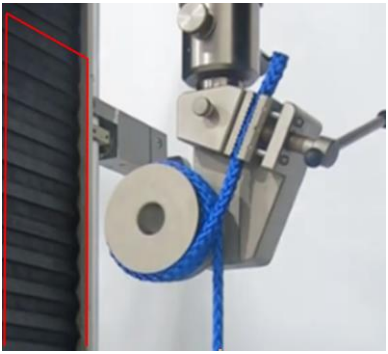
	
<p>TH170-250+Ko      Hydraulic capstan rope grip</p>	<p>Tensile force: 250 kN</p>
	
<p>TH170-50-D296-B38R6+BP-Af36.18 Bollard Ø 296 mm, width 38 mm</p>	<p>TH170-100-T180-Af318-ni-rot45 Temperature range up to +180°C</p>

See also other rope grips:

[www.grip.de/G11](http://www.grip.de/G11)

THS185-20, THS185-50, TH170-100, TH76-20, THS13

Videos:

	<p>TH170-50</p> <p><a href="https://www.youtube.com/watch?v=BXFq3ETYCto">https://www.youtube.com/watch?v=BXFq3ETYCto</a></p>
	<p>TH170-50</p> <p><a href="https://www.youtube.com/watch?v=kQBoekZS7so">https://www.youtube.com/watch?v=kQBoekZS7so</a></p>
	<p>TH170-50-W66-D110 rope grip for 3 turns</p> <p><a href="https://www.youtube.com/watch?v=BXFq3ETYCto">https://www.youtube.com/watch?v=BXFq3ETYCto</a></p> <p>(We recommend adding a protection shield on the left side to protect tensile tester)</p>