

**PNEUMATIC GRIPS, 1 kN and 2 kN**

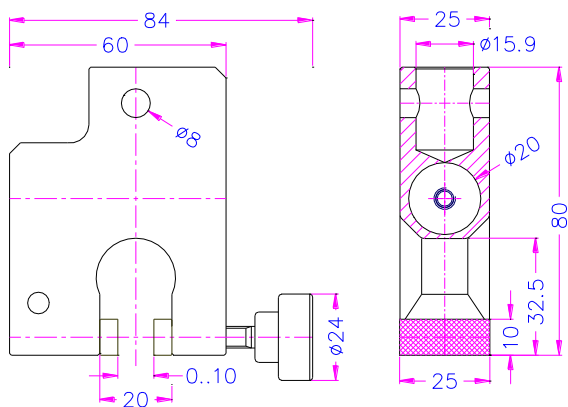


**TH229 1 kN**

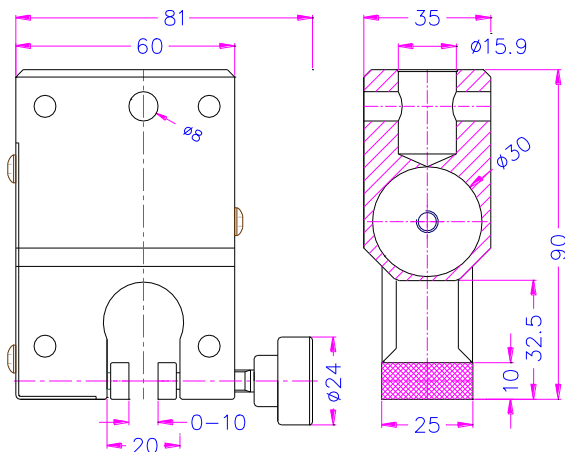


**TH229+Ko30 2 kN**

	<b>TH229</b>	<b>TH229+Ko30</b>
Max. clamping force:	1 kN at 7 bar	2 kN at 7 bar
Max. tensile force:	0.5 kN at 0.5 COF	1 kN at 0.5 COF
Body:	Aluminium, anodized	Aluminium, anodized
Temperature range:	0... +70°C (depending on jaws). Further temperature ranges on request	
Pneumatic piston:	20 mm Ø	30 mm Ø
Pneumatic connection:	Internal thread M5	Internal thread M5
Weight:	0.26 kg per grip without jaws	0.4 kg per grip without jaws
Scope of delivery:	1 pair without jaws	1 pair without jaws



**TH229**



**TH229+Ko30**








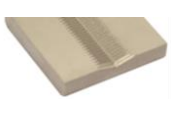
**Jaws for TH229:** Scope of delivery 1 set = 4 jaws


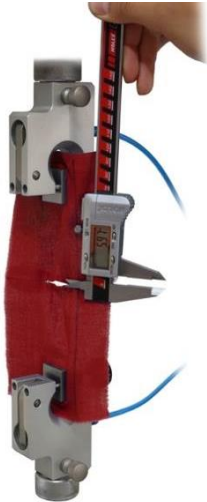
Item number	Surface	Clamping surface H x W	Opening	Weight per pair
TH229-B25	Blank jaws	10 x 25 mm	0 – 8 mm*	18 g
TH229-BG25	Rubber jaws	10 x 25 mm	0 – 6 mm	19 g
TH229-BP25	Pyramid jaws	10 x 25 mm	0 – 8 mm*	17 g
TH229-BD25	Diamond jaws	10 x 25 mm	0 – 8 mm*	18 g
TH229-BLC-R5**	Line-contact jaws, radius 5 mm	10 x 25 mm	0 – 7 mm	14 g
TH229-B50	Blank jaws	10 x 50 mm	0 – 6 mm	46 g
TH229-BG50	Rubber jaws	10 x 50 mm	0 – 4 mm	48 g
TH229-BP50	Pyramid jaws	10 x 50 mm	0 – 6 mm	43 g
TH229-BD50	Diamond jaws	10 x 50 mm	0 – 6 mm	46 g
TH229-B60	Blank jaws	10 x 60 mm	0 – 6 mm	57 g
TH229-BG60	Rubber jaws	10 x 60 mm	0 – 4 mm	58 g
TH229-BP60	Pyramid jaws	10 x 60 mm	0 – 6 mm	54 g
TH229-BD60	Diamond jaws	10 x 60 mm	0 – 6 mm	57 g
TH229-B80	Blank jaws	10 x 80 mm	0 – 6 mm	78 g
TH229-BG80	Rubber jaws	10 x 80 mm	0 – 4 mm	79 g
TH229-BP80	Pyramid jaws	10 x 80 mm	0 – 6 mm	73 g
TH229-BD80	Diamond jaws	10 x 80 mm	0 – 6 mm	78 g
TH229-B100	Blank jaws	10 x 100 mm	0 – 6 mm	92 g
TH229-BG100	Rubber jaws	10 x 100 mm	0 – 4 mm	95 g
TH229-BP100	Pyramid jaws	10 x 100 mm	0 – 6 mm	86 g
TH229-BD100	Diamond jaws	10 x 100 mm	0 – 6 mm	92 g
TH229-B25x25	Blank jaws	25 x 25 mm	0 – 8 mm	44 g
TH229-BG25x25	Rubber jaws	25 x 25 mm	0 – 6 mm	48 g
TH229-BP25x25	Pyramid jaws	25 x 25 mm	0 – 8 mm	42 g
TH229-BV8-25x25	V-jaws	Clamping height 25 mm	2 – 8 mm Ø	40 g
TH229-BW25x25	Wave jaws	25 x 25 mm	0 – 8 mm	47 g
TH229-BD25x25	Diamond jaws	25 x 25 mm	0 – 8 mm	45 g
TH229-B25x50	Blank jaws	25 x 50 mm	0 – 6 mm	120 g
TH229-BG25x50	Rubber jaws	25 x 50 mm	0 – 4 mm	119 g
TH229-BP25x50	Pyramid jaws	25 x 50 mm	0 – 6 mm	108 g
TH229-BW25x50	Wave jaws	25 x 50 mm	0 – 6 mm	100 g
TH229-BD25x50	Diamond jaws	25 x 50 mm	0 – 6 mm	120 g

\*Special pins to change the opening to 2 – 10 mm are included in price of the grips. Grip reassemble is necessary to change the pins

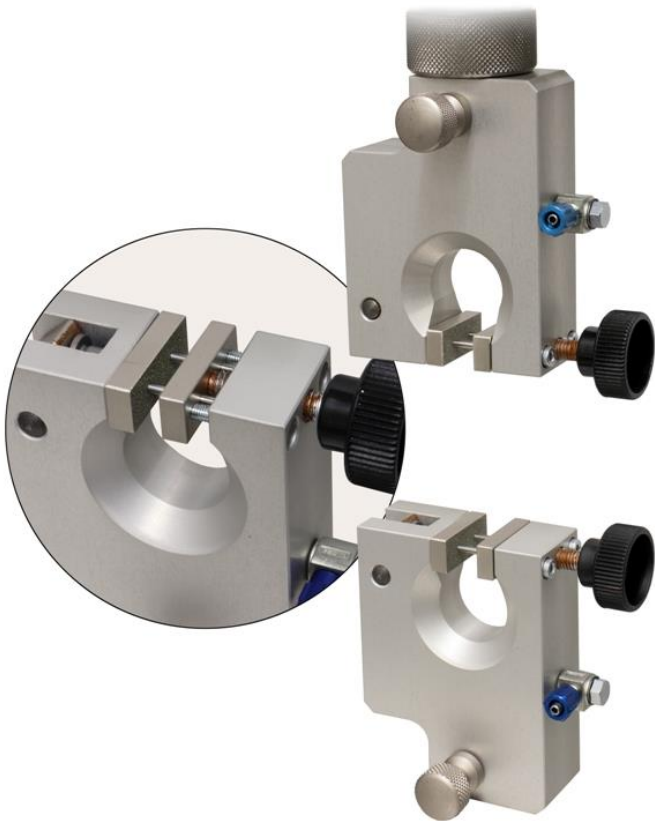

\*\*Line-contact jaws are used in combination with rubber jaws

Jaws with other dimensions and surfaces on request

					
<b>Blank jaws</b> - Applicable for own further treatment - Steel blanks without coating	<b>Rubber jaws</b> - 1 mm rubber coating (NBR) - Nickel-plated	<b>Pyramid jaws</b> - Pyramids 0.8x45° - Hardened steel 58 HRC - Nickel-plated	<b>Wave jaws</b> - For flexible materials - Wave 5 mm - Hardened steel 58 HRC - Nickel-plated	<b>Diamond jaws</b> - Clamping surface coated with synthetic diamonds - Nickel-plated	<b>V-jaws</b> - For all kinds of round samples - Tooth pitch 0.8 mm - Hardened steel 58 HRC - Nickel-plated

	
<p><b>TH229+BLC-R5+BG25</b> Line-contact jaw with rubber jaw</p>	<p><b>TH229+B50+B25x25-ASTM-D1683</b> Failure in sewn seams of woven fabrics to ASTM-D1683</p>

**Examples for custom-built solutions:**

	
<p><b>TH229+BD25-GDP</b> Special diamond jaws with guides (2 through pins) to avoid jaw rotation</p>	<p><b>TH229-T180</b> With Teflon screw knob for max. +180°C</p>



### TH229-A4-Af159+B

Special stainless steel version  
Temperature range 0 ... +80°C

#### Pneumatic accessories:



##### TH205-1 Foot pedals

None locking: The jaws of the grip open by pressing the foot pedal and close after removing the foot from the pedal.

Scope of delivery: 1 pair of foot switches including tubes and fittings



##### TH205-2 Foot pedals

With locking function: The jaws of the grip open by pressing the foot pedal and remain opened after removing the foot from the pedal. The jaws close by pressing the pedal one more time.

Scope of delivery: 1 pair of foot switches including tubes and fittings



##### TH205-PR16bar Pressure regulator

Optional for TH205-1 or TH205-2

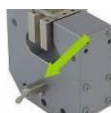
To adjust air pressure: 1-16 bar



##### TH205-3 Hand switches

With locking function: The jaws of the grip close by pulling the handle and remain closed. The jaws open by pushing the handle back.

Scope of delivery: 1 unit of hand switches including tubes and fittings



##### TH205-4-M5 Pneumatic micro hand switches

Pneumatic micro hand switches with M5 connection, tubes and fittings

With locking function (see TH205-3)

The hand switches are directly mounted at the grips. 3/2 directional valve

Scope of supply: 2 hand switches including tubes and fittings



##### TH216 Silent compressor for laboratories, oil-lubricated, with pressure reducer

Max pressure 16 bar; 230 V/50 HZ; noise level: 38 dB(A)

Motor: 0.13 kW; displacement: 17 l/min; tank size 3.5 l

Dimensions: 340x290x340 mm (L x W x H); weight 18 kg