

## TH232 Pneumatic grip

Clamping force: 16 kN / 7 bar (32 kN / 16 bar)

Adjustable jaw opening: 0-10 mm, 10-20 mm, 20-30 mm

Coupling: Af159 (5/8"). Further couplings on request

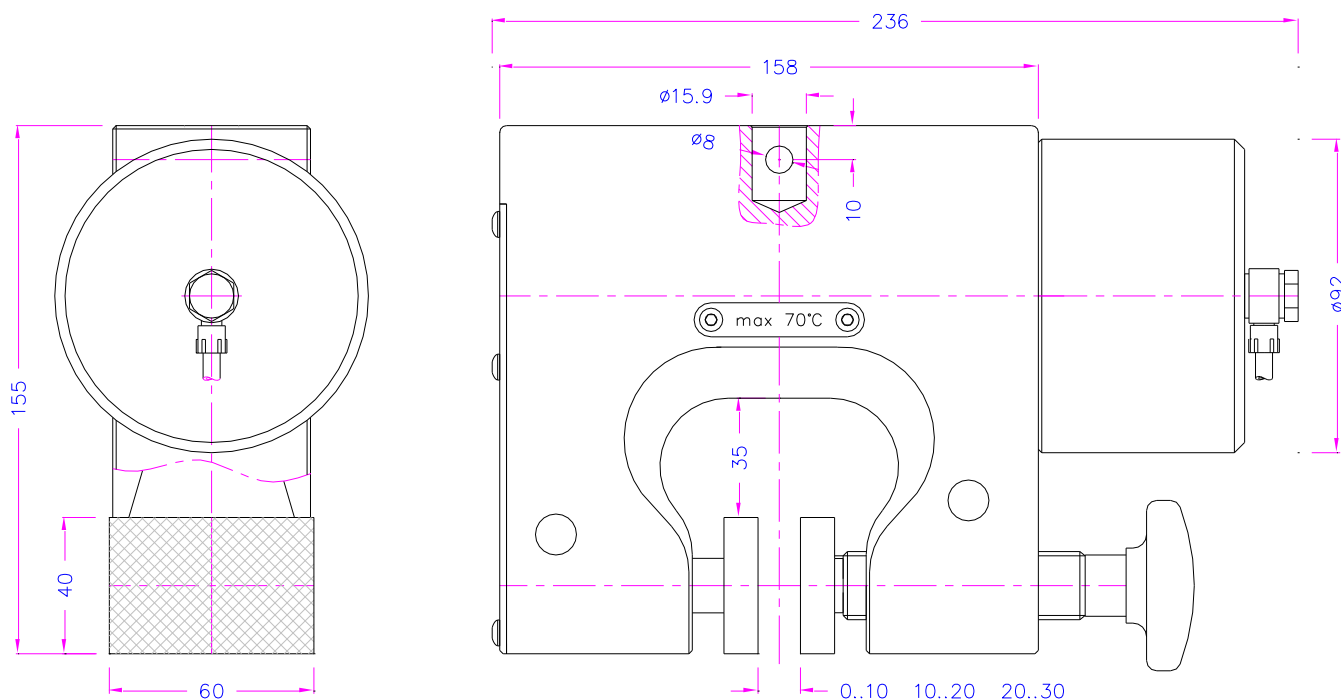
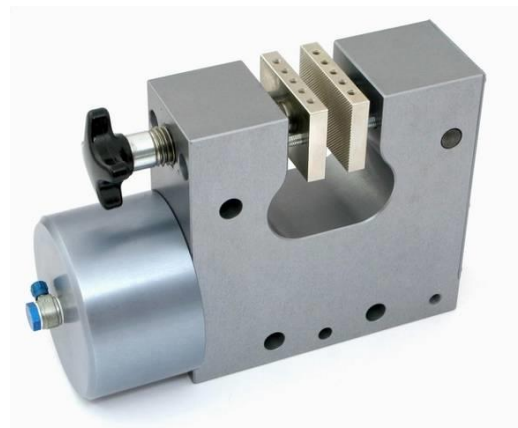
Pneumatic connection: inner thread 1/8"

Body: anodized aluminum

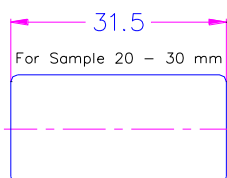
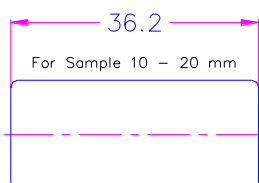
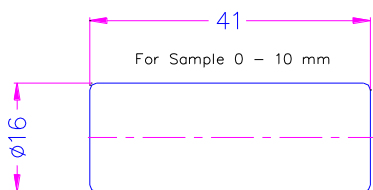
Standard temperature range: 0°C ... +70°C  
Further temperature ranges on request

Weight: 4.5 kg each grip without jaws

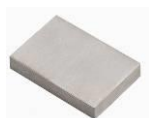
Scope of delivery: 1 pair of grips



jaw opening can be adjusted by using rods of different lengths:

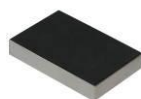


**Jaws for TH232:** Scope of delivery: 1 Set = 4 jaws



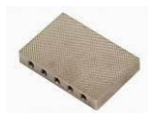
**TH232-B Blank (smooth) jaws**

- Suitable for own further treatments
- Steel-blanks without coating



**TH232-BG Rubber coated jaws**

- 1 mm rubber coating (NBR)
- Nickel-plated



**TH232-BP Pyramid jaws (serrated)**

- Pyramids 1.2x45
- Hardened steel 58HRC
- Nickel-plated°



**TH232-BV V-jaws**

- For all kinds of round samples
- Tooth pitch 1.2 mm
- Hardened steel 58HRC
- Nickel-plated



**TH232-BW Wave jaws (corrugated)**

- For flexible materials
- Wave 5 mm
- Hardened steel 58HRC
- Nickel-plated



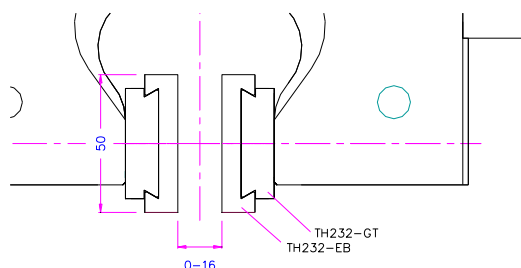
**TH232-BD Diamond coated jaws**

- Clamping surface coated with synthetic diamonds D91 (170/200 mesh)
- Nickel-plated

| Item number | Surface             | Clamping surface<br>H x W | Opening*  | Weight<br>1 pair |
|-------------|---------------------|---------------------------|-----------|------------------|
| TH232-B     | Blank jaws          | 40 x 60 mm                | 0-30 mm   | 0.35 kg          |
| TH232-BG    | Rubber-coated jaws  | 40 x 60 mm                | 0-28 mm   | 0.36 kg          |
| TH232-BP    | Pyramid jaws        | 40 x 60 mm                | 0-30 mm   | 0.33 kg          |
| TH232-BV3   | V-jaws              | Height 40 mm              | 3-20 mm Ø | 0.35 kg          |
| TH232-BV6   | V-jaws              | Height 40 mm              | 6-30 mm Ø | 0.35 kg          |
| TH232-BW    | Wave jaws           | 40 x 60 mm                | 0-30 mm   | 0.40 kg          |
| TH232-BD    | Diamond-coated jaws | 40 x 60 mm                | 0-30 mm   | 0.35 kg          |
| TH232-B100  | Blank jaws          | 40 x 100 mm               | 0-30 mm   | 0.72 kg          |
| TH232-BG100 | Rubber-coated jaws  | 40 x 100 mm               | 0-28 mm   | 0.74 kg          |
| TH232-BP100 | Pyramid jaws        | 40 x 100 mm               | 0-20 mm   | 0.69 kg          |
| TH232-BW100 | Wave jaws           | 40 x 100 mm               | 0-30 mm   | 0.66 kg          |
| TH232-BD100 | Diamond-coated jaws | 40 x 100 mm               | 0-30 mm   | 0.72 kg          |
| TH232-BP200 | Pyramid jaws        | 60 x 200 mm               | 0-30 mm   | 3.00 kg          |
| TH232-BG200 | Rubber-coated jaws  | 60 x 200 mm               | 0-25 mm** | 3.06 kg          |
| TH232-BW200 | Wave jaws           | 60 x 200 mm               | 0-30 mm   | 3.00 kg          |

\*Rods for opening 10-20 mm and 20-30 mm are included in the scope of delivery of the grips

\*\*with rods for opening 10 - 20 mm



**Insert jaws for TH232:**

Jaw quick-change system. Insert jaws require a carrier (TH232-GT)

Scope of delivery: 1 set = 4 jaws

| Item number  | Surface                    | Clamping surface<br>H x W | Opening* | Weight<br>1 pair |
|--------------|----------------------------|---------------------------|----------|------------------|
| TH232-GT     | Carrier                    | -                         | -        | 0.33 kg          |
| TH232-EB     | Blank insert jaws          | 50 x 60 mm                | 0-16 mm  | 0.29 kg          |
| TH232-EBG    | Rubber coated insert jaws  | 50 x 60 mm                | 0-14 mm  | 0.30 kg          |
| TH232-EBP    | Pyramid insert jaws        | 50 x 60 mm                | 0-16 mm  | 0.28 kg          |
| TH232-EBV4   | V insert jaws              | Clamping height 50 mm     | 4-16 mm  | 0.29 kg          |
| TH232-EBW    | Wave insert jaws           | 50 x 60 mm                | 0-16 mm  | 0.26 kg          |
| TH232-EBD    | Diamond coated insert jaws | 50 x 60 mm                | 0-16 mm  | 0.29 kg          |
| TH232-GT100  | Carrier                    | -                         | -        | 0.69 kg          |
| TH232-EB100  | Blank insert jaws          | 50 x 100 mm               | 0-16 mm  | 0.63 kg          |
| TH232-EBG100 | Rubber coated insert jaws  | 50 x 100 mm               | 0-14 mm  | 0.65 kg          |
| TH232-EBP100 | Pyramid insert jaws        | 50 x 100 mm               | 0-16 mm  | 0.60 kg          |
| TH232-EBW100 | Wave insert jaws           | 50 x 100 mm               | 0-16 mm  | 0.57 kg          |
| TH232-EBD100 | Diamond coated insert jaws | 50 x 100 mm               | 0-16 mm  | 0.63 kg          |

\*On request: opening 9-19 mm

Jaws with other dimensions and surface coatings on request

All specifications subject to change without prior notice

**TH232+2Ko**

Pneumatic grip with 2 rods

Clamping force: 16 kN / 7 bar (32 kN / 16 bar)

Adjustable jaw opening: 0-10 mm, 10-20 mm, 20-30 mm

Coupling: Af159 (5/8"). Further couplings on request

Pneumatic connection: inner thread 1/8"

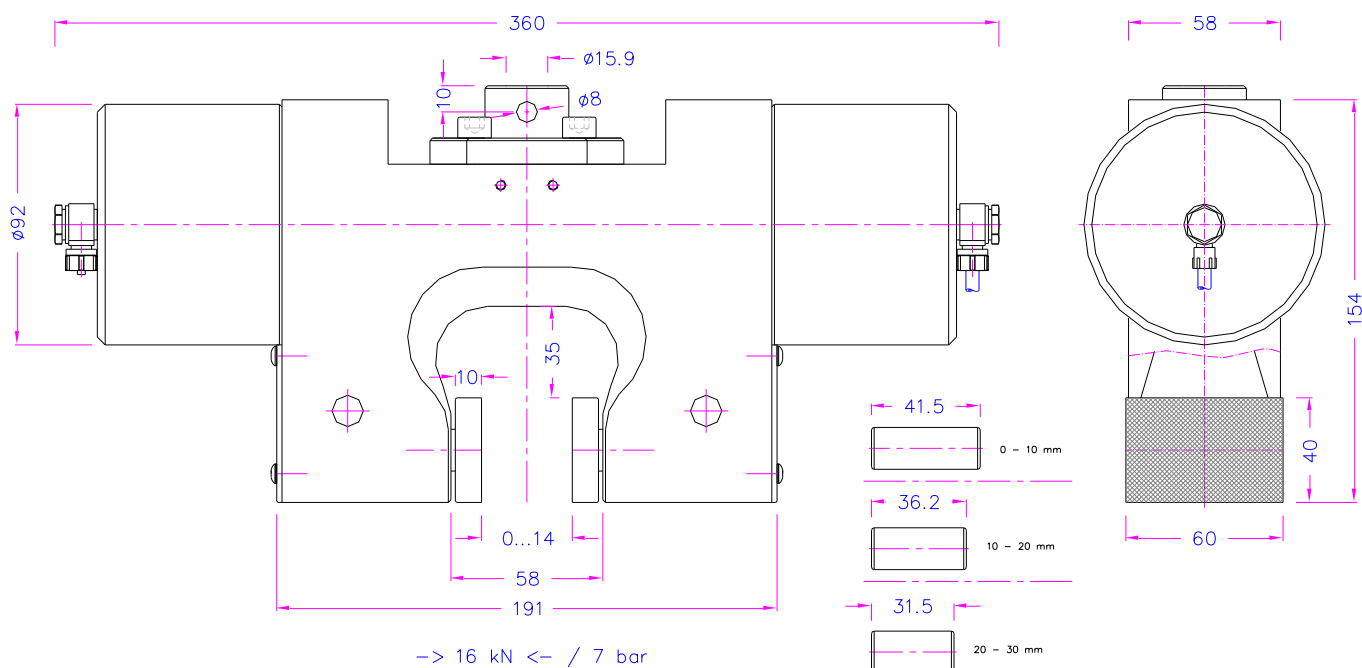
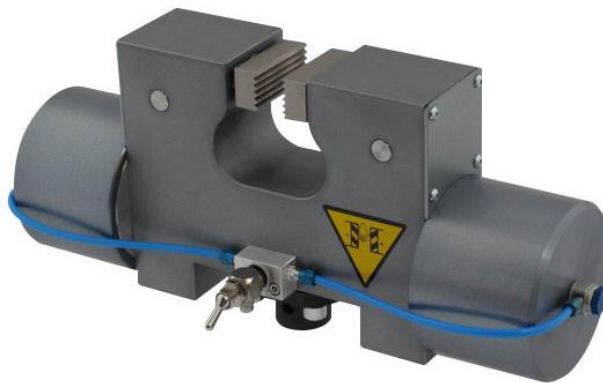
Body: anodized aluminum

Standard temperature range: 0 °C ... +70°C

Further temperature ranges on request

Weight: 5.18 kg each grip without jaws

Scope of delivery: 1 pair of grips



**Accessories:****TH205-1 Foot pedals**

None locking: The jaws of the grip open by pressing the foot pedal and close after removing the foot from the pedal.  
Scope of delivery: 1 pair of foot switches including tubes and fittings

**TH205-2 Foot pedals**

With locking function: The jaws of the grip open by pressing the foot pedal and remain opened after removing the foot from the pedal. The jaws close by pressing the pedal one more time.  
Scope of delivery: 1 pair of foot switches including tubes and fittings

**TH205-PR16bar Pressure regulator**

Optional for TH205-1 or TH205-2  
To adjust air pressure: 1-16 bar

**TH205-3 Hand switches**

With locking function: The jaws of the grip close by pulling the handle and remain closed. The jaws open by pushing the handle back.  
Scope of delivery: 1 unit of hand switches including tubes and fittings

**TH205-4-1/8" Micro hand switches**

Pneumatic micro hand switches with 1/8" connection, tubes and fittings  
With locking function (see TH205-3)  
The hand switches are directly mounted at the grips. 3/2 directional valve  
Scope of supply: 2 hand switches including tubes and fittings

**TH216 Silent compressor for laboratories, oil-lubricated, with pressure reducer**

Max pressure 16 bar; 230 V/50 HZ; noise level: 38 dB(A)  
Motor: 0.13 kW; displacement: 17 l/min; tank size 3.5 l  
Dimensions: 340x290x340 mm (L x W x H); weight 18 kg

**See also test videos**

<http://youtu.be/cCtC0Gd1ZAs> + wave jaws textile 2 bar

<http://youtu.be/WD16Uqq-fxw> with pyramid jaws 8 bar plastic sample

<http://youtu.be/jO3mH-KQK94> BP glued sample

<http://www.youtube.com/watch?v=olKEL5AOrAM> TH232+2Ko + special jaws

**Similar grips:** TH83, TH126, manual TH154