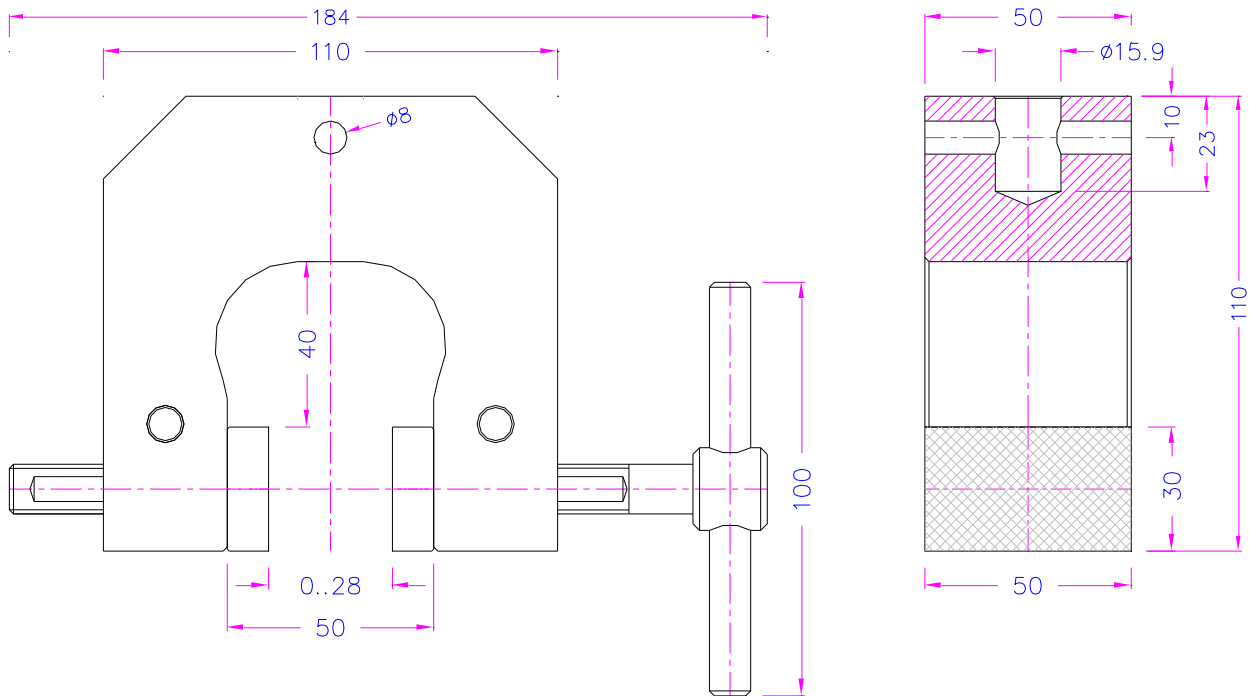


SCREW ACTION GRIPS

- Provide a simple and effective method to hold specimens
- Dual acting design, also for asymmetrical samples
- Jaws articulate and provide self-alignment and cause a self-tightening effect
- Also as pneumatic version available (see data sheet [TH240g+Ko](#))

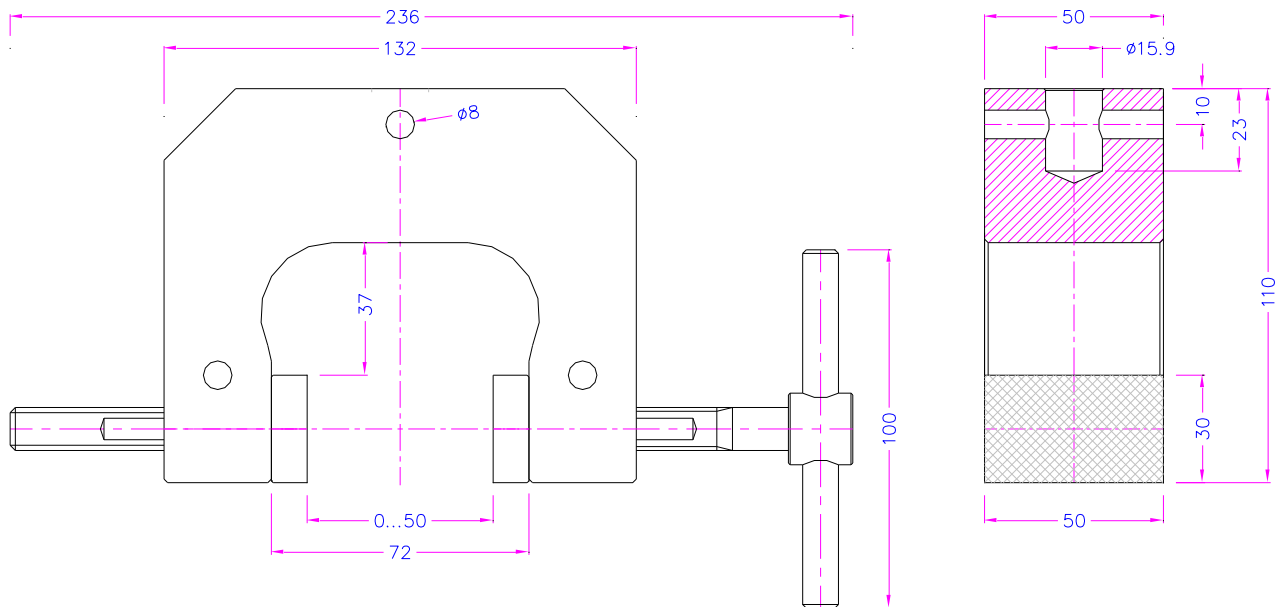
Item no.:	TH240g
Tensile force:	5 kN
Clamping force:	10 kN at 15 Nm torque
Jaw opening:	0 - 28 mm depending on jaw type (see p. 4)
Standard coupling:	Af15.9 mm or Af20 mm Further couplings on request
Body:	Anodized aluminium
Jaws:	Steel, nickel-plated
Standard temperature range:	-70°C ... +180°C*
Weight per grip without jaws:	1.3 kg
Scope of supply:	1 pair of grips without jaws



TH240g+BV2

*-30°C... +70°C with rubber-coated jaws

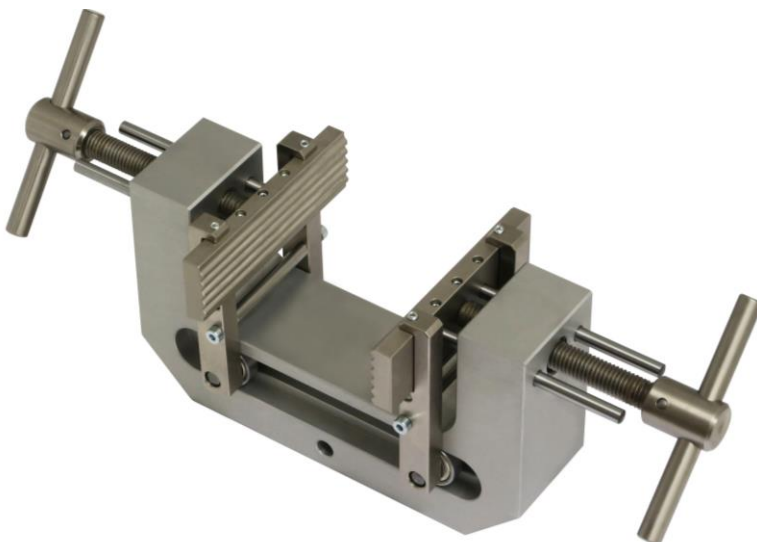
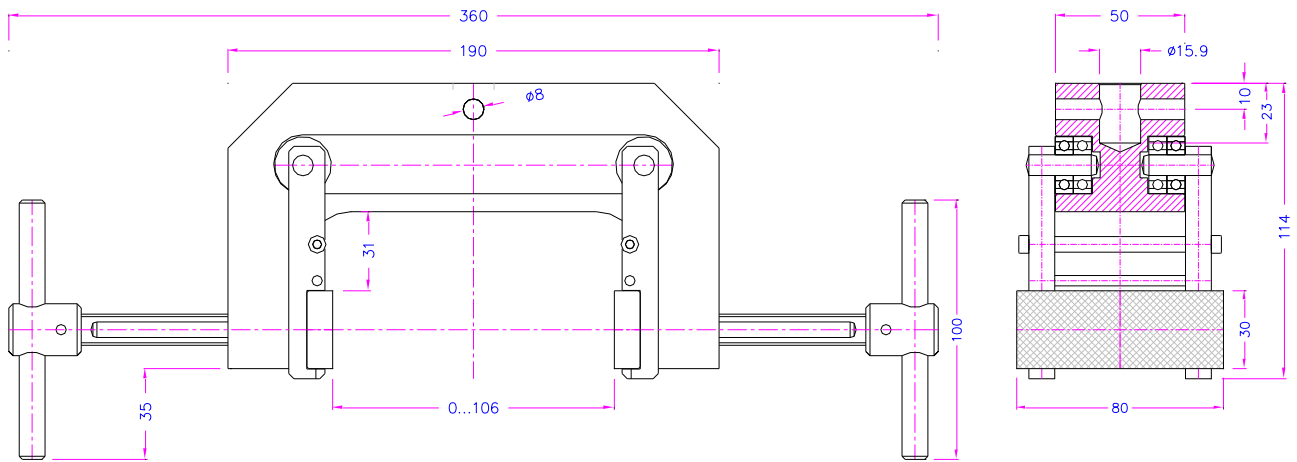
Item no.:	TH240g-S50
Tensile force:	5 kN
Jaw opening:	0 - 50 mm depending on jaw type (see p. 4)
Standard coupling:	Af15.9 mm or Af20 mm Further couplings on request
Body:	Anodized aluminium
Jaws:	Steel, nickel-plated
Standard temperature range:	-70°C ... +180°C*
Weight per grip without jaws:	1.4 kg
Scope of supply:	1 pair of grips without jaws



TH240g-S50+BG80

*-30°C... +70°C with rubber-coated jaws

Item no.:	TH240g-S100
Tensile force:	5 kN
Jaw opening:	0 - 106 mm depending on jaw type (see p. 4)
Standard coupling:	Af15.9 mm or Af20 mm Further couplings on request
Body:	Anodized aluminium
Jaws:	Steel, nickel-plated
Standard temperature range:	0°C ...+70°C
Weight per grip without jaws:	2.3 kg
Scope of supply:	1 pair of grips without jaws



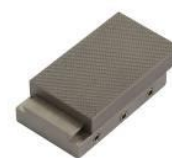
TH240g-S100+BW100

Jaws for TH240g

Scope of delivery 1 set = 4 jaws

Item no.	Surface	Clamping surface H x W	Opening for TH240g	Opening for TH240g-S50	Opening for TH240g-S100	Weight per pair
TH240g-B	Blank jaws	30 x 50 mm	0 – 28 mm	0 – 50 mm	-	0.22 kg
TH240g-BG	Rubber-coated jaws	30 x 50 mm	0 – 26 mm	0 – 48 mm	-	0.23 kg
TH240g-BP	Pyramid (serrated) jaws	30 x 50 mm	0 – 28 mm	0 – 50 mm	-	0.21 kg
TH240g-BV2	V jaws	Height 30 mm	Ø 2 – 28 mm	Ø 2 - 50 mm	-	0.22 kg
TH240g-BV5	V jaws	Height 30 mm	Ø 5 – 28 mm	Ø 5 – 50 mm	-	0.25 kg
TH240g-BW	Wave jaws	30 x 50 mm	0 – 28 mm	0 – 50 mm	-	0.20 kg
TH240g-BD	Diamond-coated jaws	30 x 50 mm	0 – 28 mm	0 – 50 mm	-	0.22 kg
TH240g-B80	Blank jaws	30 x 80 mm	0 – 28 mm	0 – 50 mm	0 – 106 mm	0.36 kg
TH240g-BG80	Rubber-coated jaws	30 x 80 mm	0 – 26 mm	0 – 48 mm	0 – 104 mm	0.37 kg
TH240g-BP80	Pyramid (serrated) jaws	30 x 80 mm	0 – 28 mm	0 – 50 mm	0 – 106 mm	0.34 kg
TH240g-BW80	Wave jaws	30 x 80 mm	0 – 28 mm	0 – 50 mm	0 – 106 mm	0.33 kg
TH240g-BD80	Diamond-coated jaws	30 x 80 mm	0 – 28 mm	0 – 50 mm	0 – 106 mm	0.36 kg
TH240g-B100	Blank jaws	30 x 100 mm	0 – 28 mm	0 – 50 mm	0 – 106 mm	0.46 kg
TH240g-BG100	Rubber-coated jaws	30 x 100 mm	0 – 26 mm	0 – 48 mm	0 – 104 mm	0.46 kg
TH240g-BP100	Pyramid (serrated) jaws	30 x 100 mm	0 – 28 mm	0 – 50 mm	0 – 106 mm	0.43 kg
TH240g-BW100	Wave jaws	30 x 100 mm	0 – 28 mm	0 – 50 mm	0 – 106 mm	0.41 kg
TH240g-BD100	Diamond-coated jaws	30 x 100 mm	0 – 28 mm	0 – 50 mm	0 – 106 mm	0.46 kg

	Blank jaws - Applicable for own further treatments - Steel-blanks without coating - Nickel-plated		Pyramid jaws - Pyramids 1.2x45° - Hardened steel 58 HRC - Nickel-plated		Wave jaws - For flexible materials - Wave 5 mm - Hardened steel 58HRC - Nickel-plated
	Rubber jaws - 1 mm rubber coating (NBR) - Nickel-plated - -30°C...+70°C		Diamond jaws - Clamping surface coated with synthetic diamonds D91 (170/200 mesh) - Nickel-plated		
	TH240g-BV2 V jaws - For all kinds of round samples - Tooth pitch 0.8 mm - Hardened steel 58 HRC - Nickel-plated		TH240g-BV5 V jaws - For all kinds of round samples - Tooth pitch 1 mm - Hardened steel 58 HRC - Nickel-plated		





Insert jaws for TH240g

Scope of delivery 1 set = 4 jaws

For a quick change of jaws, insert jaws require carriers (TH240g-GT)

Item no.	Surface	Clamping surface H x W	Opening for TH240g	Opening for TH240g-S50	Opening for TH240g-S100	Weight per pair
TH240g-GT	Insert jaw carrier	-	-	-	-	0.19 kg
TH240g-EB	Blank insert jaws	30 x 50 mm	0 – 18 mm	0 – 40 mm	-	0.14 kg
TH240g-EBG	Rubber-coated insert jaws	30 x 50 mm	0 – 16 mm	0 – 38 mm	-	0.14 kg
TH240g-EBP	Pyramid (serrated) insert jaws	30 x 50 mm	0 – 18 mm	0 – 40 mm	-	0.13 kg
TH240g-EBV	V insert jaws	Height 30 mm	Ø 2 – 17 mm	Ø 2 – 39 mm	-	0.14 kg
TH240g-EBW	Wave insert jaws	30 x 50 mm	0 – 18 mm	0 – 40 mm	-	0.12 kg
TH240g-EBD	Diamond-coated insert jaws	30 x 50 mm	0 – 18 mm	0 – 40 mm	-	0.14 kg
TH240g-EB100	Blank insert jaws	30 x 100 mm	0 – 14 mm	0 – 36 mm	0 – 92 mm	0.37 kg
TH240g-EBG100	Rubber-coated insert jaws	30 x 100 mm	0 – 12 mm	0 – 34 mm	0 – 90 mm	0.38 kg
TH240g-EBP100	Pyramid (serrated) insert jaws	30 x 100 mm	0 – 14 mm	0 – 36 mm	0 – 92 mm	0.34 kg
TH240g-EBW100	Wave insert jaws	30 x 100 mm	0 – 14 mm	0 – 36 mm	0 – 92 mm	0.34 kg
TH240g-EBD100	Diamond-coated insert jaws	30 x 100 mm	0 – 14 mm	0 – 36 mm	0 – 92 mm	0.37 kg

Jaws with other dimensions and surface coatings on request

 <p>Optional quick-release lever Item no.: TH240g-EI</p>	 <p>How to clamp a sample with a quick-release lever https://www.youtube.com/watch?v=Aq9M03zPAIA</p> <p>How to set jaw opening with a quick-release lever https://www.youtube.com/watch?v=IVsvdJZ5Ra8</p>
--	--

Examples of customized solutions

 <p>TH240g-S50+BS12 Special jaws</p>	 <p>TH240g-S70 Jaw opening 0-70 mm</p>	 <p>TH240g+BW200 With special wave jaws 200 mm wide</p>
 <p>TH240g-BG50x50 HxW: 50x50 mm</p>	 <p>TH240g-BW50x60 HxW: 50x60 mm</p>	 <p>TH240g-BVG Rubber coated V-jaws</p>
 <p>TH240g-BW150 Extra wide wave jaws, 150 mm</p>	 <p>TH240g-BP25x25 Special serrated jaws, clamping surface 25x25 mm</p>	

Pneumatic versions

See data sheet [TH240g+Ko](http://www.grip.de/G12) www.grip.de/G12

	
<p>TH240g+Ko</p>	<p>TH240g+2Ko</p>