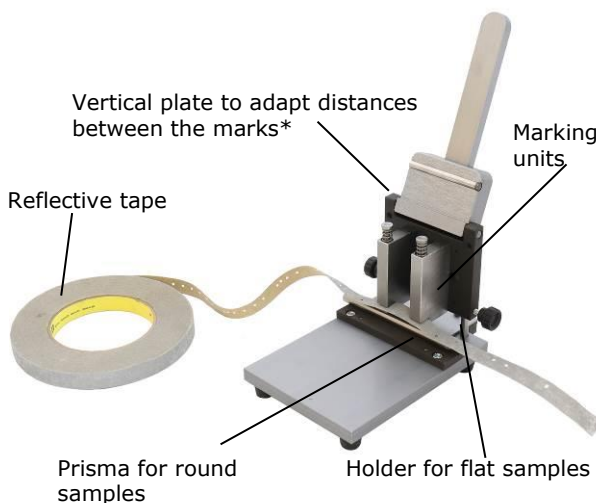


Manual marker for samples

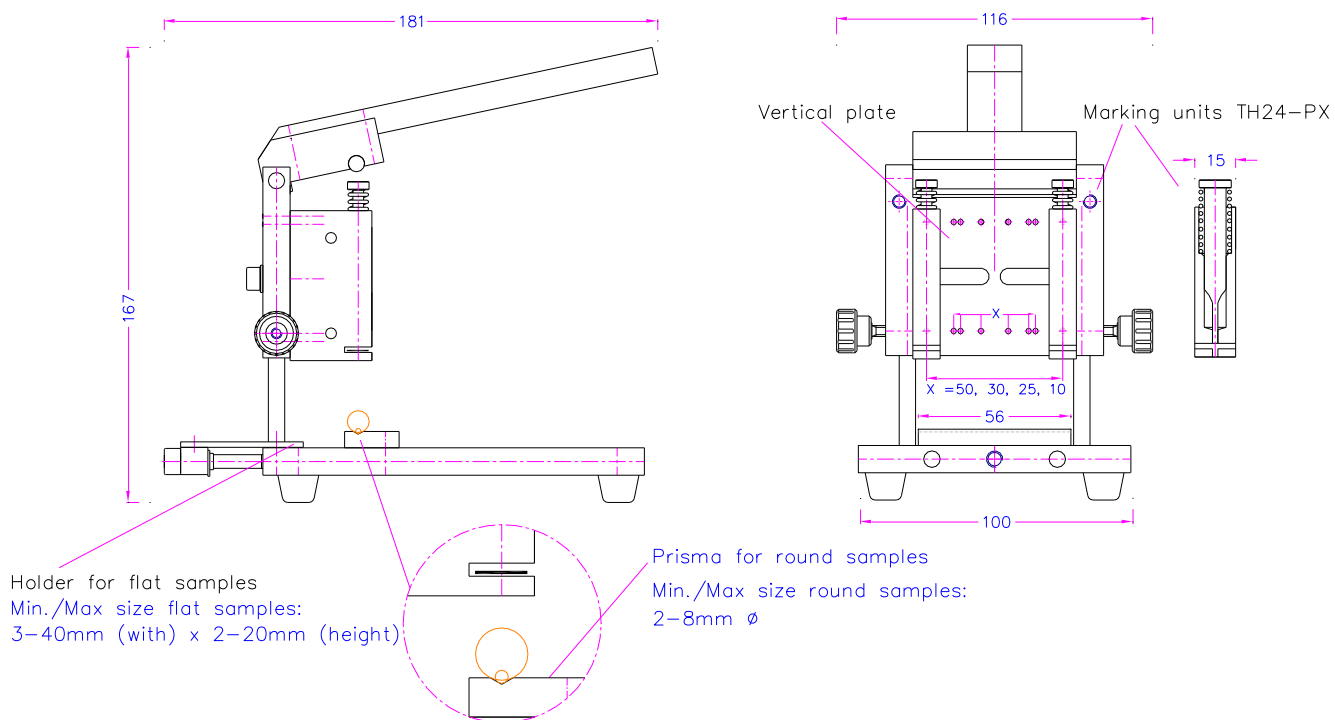
The marking units mark samples directly or punch marks from a reflective tape on the samples. Those marks serve as optical position sensors for tensile testing.

Item No.:	TH24-m
Material:	Aluminium, Steel
Temperature range:	0°C...+70°C Further temperature ranges on request
Weight:	Ca. 1.1 kg (excl. marking units)
Size of samples:	Round samples: 2-8 mm Ø
	Flat samples: 3-40 mm (width) x 2-20 mm (height)
Scope of supply:	1 fixture (excl. marking units and accessories see page 2-3)



*Metric distances, further units of measure on request (see e.g. TH24-06-Z)

TH24-m

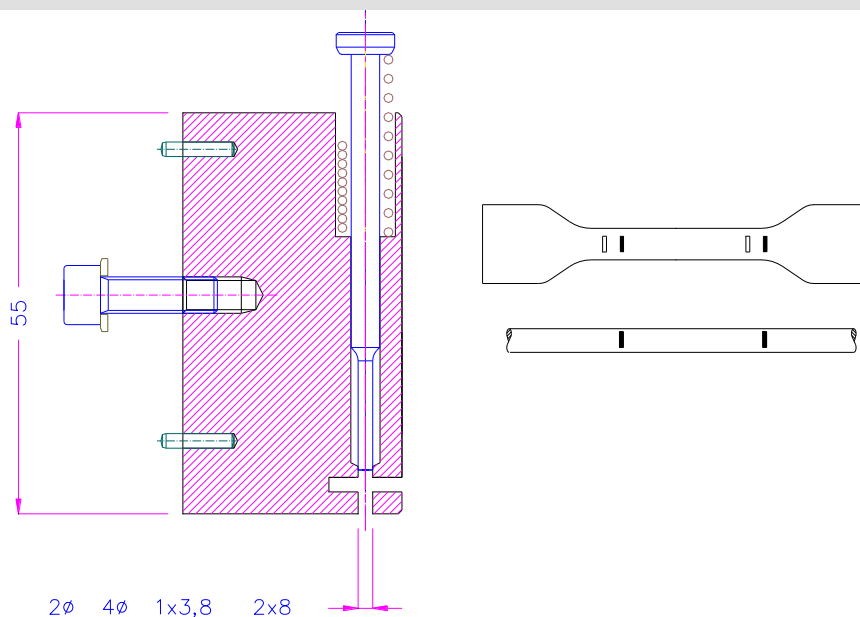
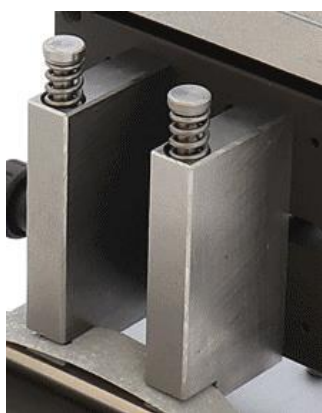


Marking units for TH24

Scope of supply: 1 set= 1 pair of marking units incl. pins

Item no.	Material	Description
TH24-P2D	Steel, hardened	Marking units incl. round pins , suitable for round samples marks: Ø 2 mm
TH24-P4D	Steel, hardened	Marking units incl. round pins , suitable for round samples marks: Ø 4 mm
TH24-P1x3.8	Steel, hardened	Marking units incl. round pins , suitable for flat samples marks: 1x3.8 mm
TH24-P2x8	Steel, hardened	Marking units incl. round pins , suitable for flat samples marks: 2x8 mm

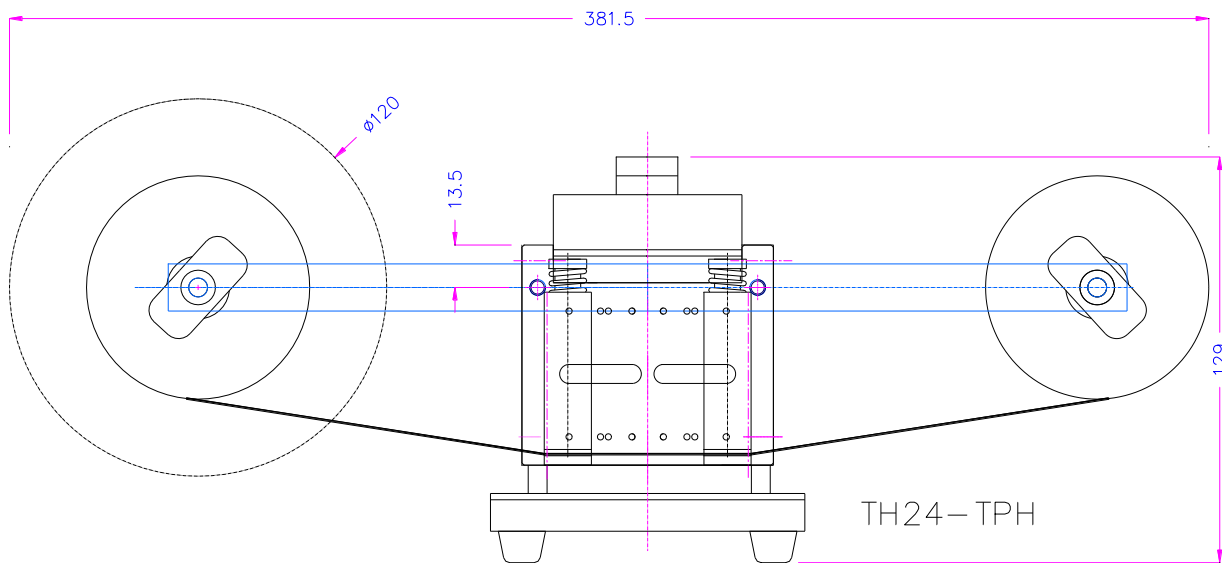
TH24-Pxx (marking units)



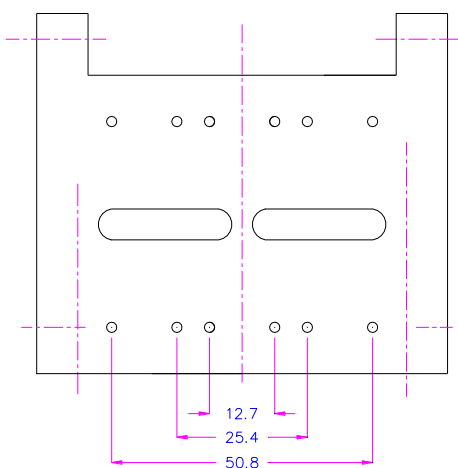
Accessories:

Item no.	Description	
TH24-TPH	Holder for reflective tape	
TH24-RFT-12.7	Photoelectric reflective tape for TH24-m and TH2570 (see page 5), length 45.7 mm, width 12.7 mm, permanent temperature resistance: 175°C, short-term: 250°C	

TH24-TPH



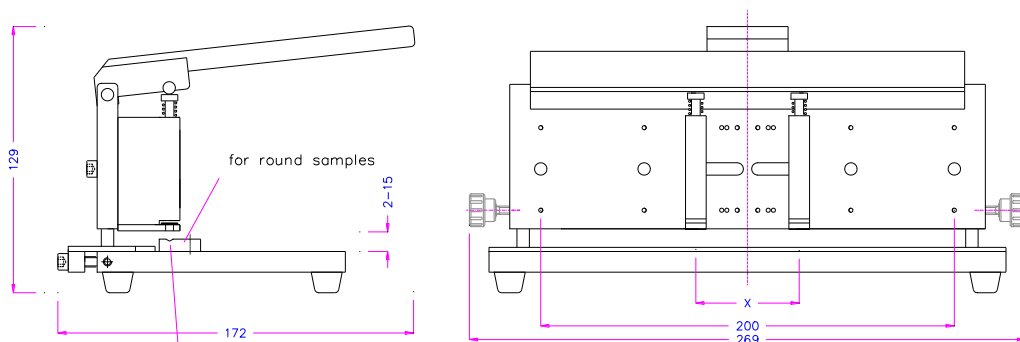
TH24-06-Z (vertical plate with inch distances)



TH24-06-Z

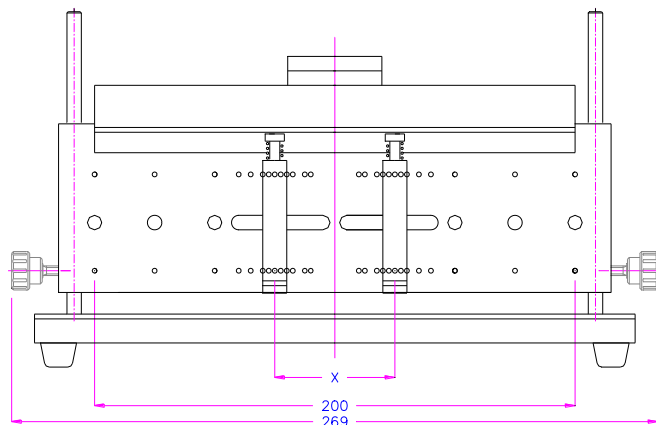
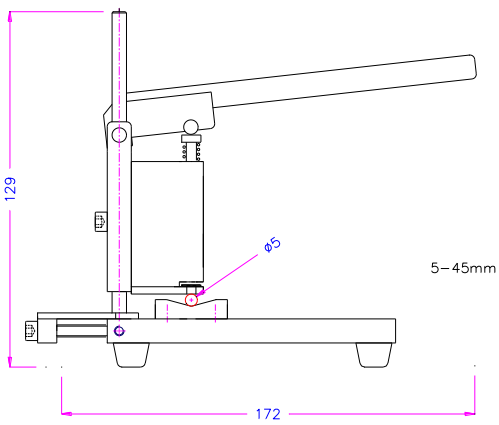
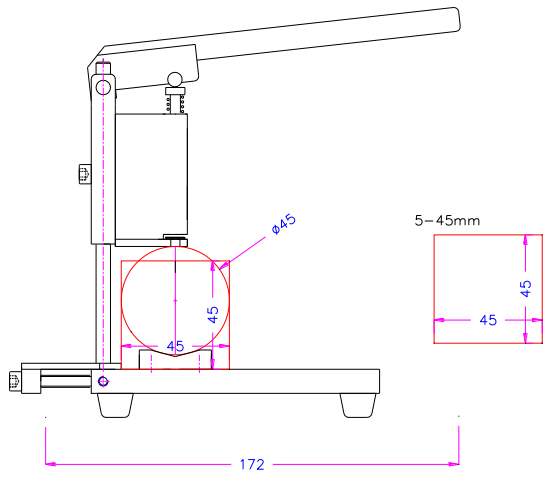
Examples of special fixtures

TH24-Sxx (Fixtures with special width 100, 200mm or special prisma for big samples)



x = 10, 20, 50, 100, 200

TH24-S200

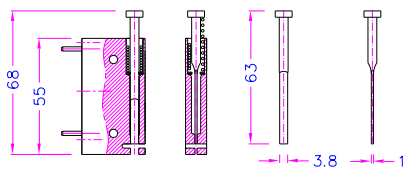
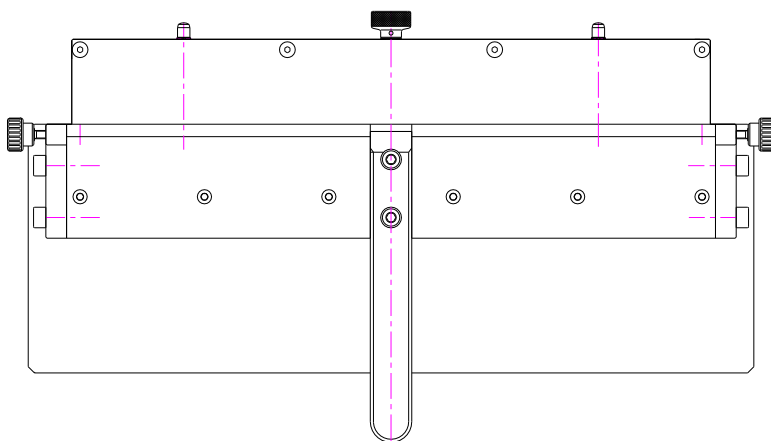
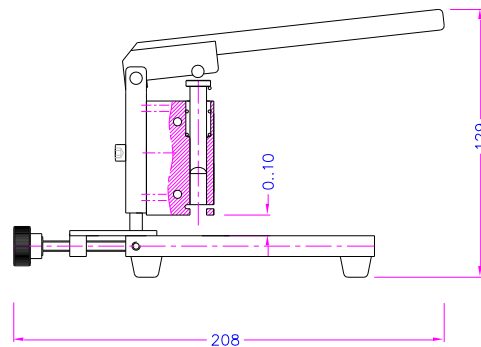
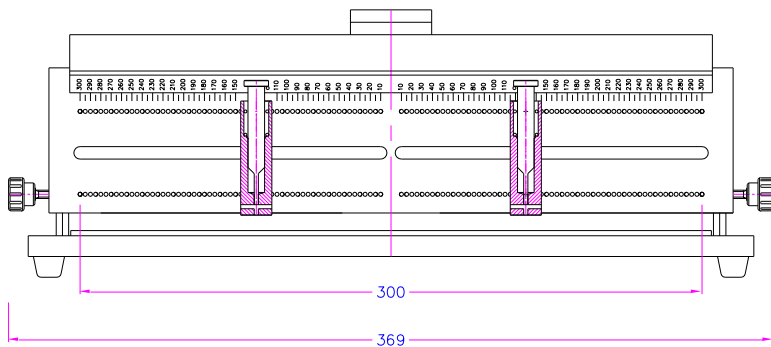


X = 20, 25, 30, 35, 40, 45, 50, 55, 60, 70, 80, 100, 150, 200

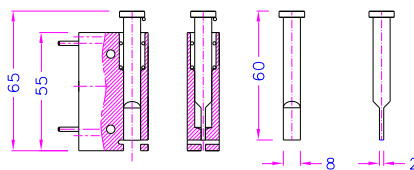
TH24-S200-V45

TH24-S300+P2x8+P1x3.8

Manual sample marker
 Special width 300 mm
 Incl. 2 marking units 2x8 mm and
 1x3.8 mm

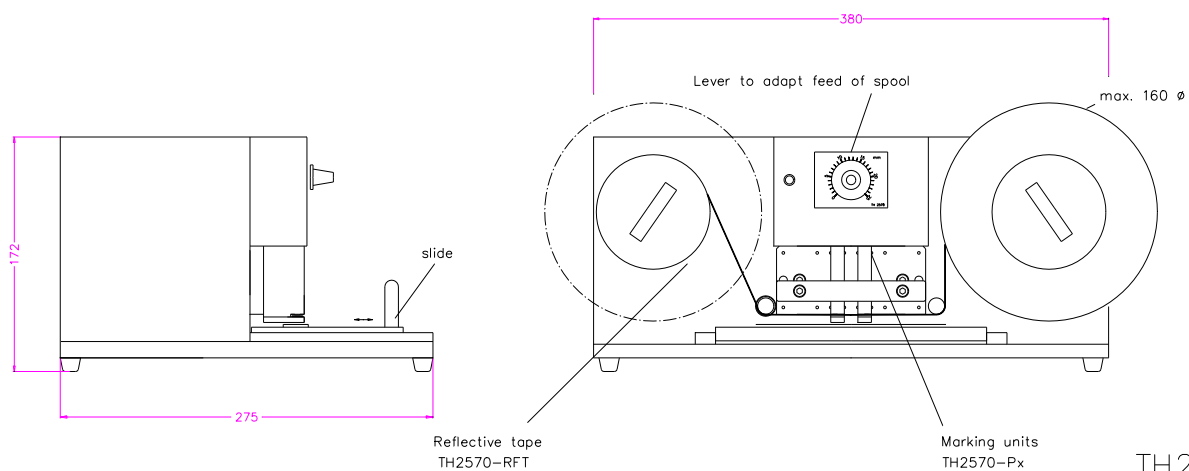


TH24-P1x3.8



TH24-P2x8

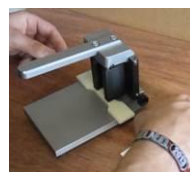
TH2570 (Automated sample marker)



TH2570

Videos

[Video TH24 How to use](#)



[Video TH2570 How to use](#)

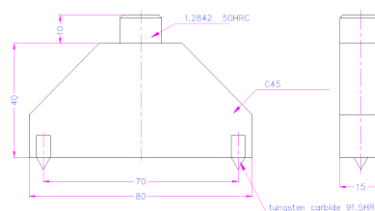


[Video TH2570 Adjusting and how to use](#)



See also:

THS1198-70 Marker



THS1666-50-100 Marker 50-100 mm

