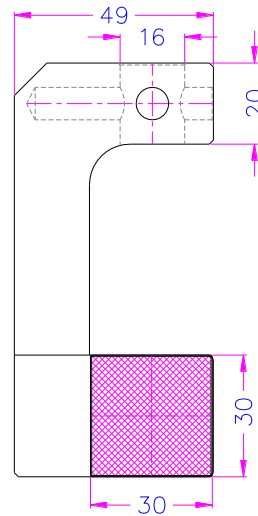
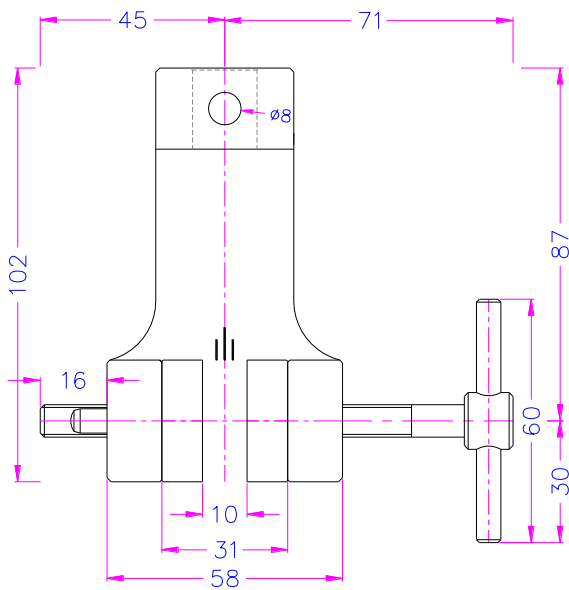


SCREW ACTION GRIP

- Provides a simple and effective method to hold specimens
- Dual acting design, also for asymmetrical samples
- Jaws articulate and provide self-aligning and self-tightening effect
- Versatile application for plastics, textiles, paper, metal foil, aluminium, brass, etc.
- Also available as pneumatic version (see datasheet [TH56k+ko](#))

Item no.:	TH56k
Tensile force:	1 kN
Clamping force:	5 kN at 4 Nm torque
Coupling:	Af159 or Af20 mm. Further couplings on request
Body:	Aluminium, anodised
Temperature range:	0°C ... +70°C (depending on jaws) Other temperature ranges on request
Weight:	0.75 kg per pair of grips without jaws
Scope of supply:	1 pair of grips without jaws. For jaws, please see page 2.

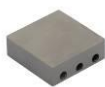


Examples for special versions:

<p>TH56k-H170+BVG</p> <p>Height 170 mm Rubber-coated v-jaws for round samples</p>	<p>TH56k-BGVu</p> <p>Jaws with Vulkollan coating High wear resistance</p>

Jaws:**Blank (smooth) jaws**

- Suitable for own further treatments
- Nickel-plated

**V-jaws**

- For all kinds of round samples
- Tooth pitch 1 mm (BV3) or 0.8 mm (BV2)
- Hardened steel 58HRC
- Nickel-plated

**Rubber-coated jaws**

- 1 mm rubber coating (NBR)
- Nickel-plated

**Wave jaws**

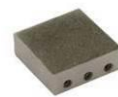
- For flexible materials
- Wave 5 mm
- Hardened steel 58HRC
- Nickel-plated

**Pyramid (serrated) jaws**

- Pyramids 1.2x45° or 0.5x45°
- Hardened steel 58HRC
- Nickel-plated

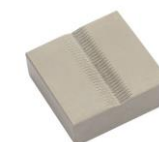
**Diamond-coated jaws**

- Clamping surface coated with synthetic diamonds D91 (170/200 mesh)
- Nickel-plated

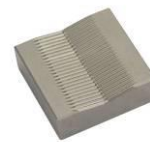


Jaws for TH56k: Scope of supply 1 set = 4 jaws

Item no.	Surface	Clamping surface H x W	Opening	Weight 1 pair
TH56k-B	Blank jaws	30 x 30 mm	0 – 10 mm	0.13 kg
TH56k-BG	Rubber coated jaws	30 x 30 mm	0 – 8 mm	0.13 kg
TH56k-BP	Pyramid jaws	30 x 30 mm	0 – 10 mm	0.12 kg
TH56k-BP0.5x45°	Pyramid jaws with fine serration 0.5x45°	30 x 30 mm	0 -10 mm	0.13 kg
TH56k-BV2	V-jaws	30 x 30 mm	2 – 10 mm Ø	0.13 kg
TH56k-BV3	V-jaws	30 x 30 mm	3 – 10 mm Ø	0.13 kg
TH56k-BW	Wave jaws	30 x 30 mm	0 – 10 mm	0.12 kg
TH56k-BD	Diamond coated jaws	30 x 30 mm	0 – 10 mm	0.13 kg
TH56k-B25x25	Blank jaws	25 x 25 mm	0 – 10 mm	0.08 kg
TH56k-BG25x25	Rubber coated jaws	25 x 25 mm	0 – 8 mm	0.12 kg
TH56k-BP25x25	Pyramid jaws	25 x 25 mm	0 – 10 mm	0.11 kg



TH56k-BV2



TH56k-BV3

BV3 preferable for samples with larger diameter

Insert jaws for TH56k: Scope of supply 1 set = 4 jaws

Quick change system, insert jaws require carriers (TH56k-GT30)

Item no.	Surface	Clamping surface H x W	Opening	Weight 1 pair
TH56k-GT30	Carrier	-	-	0.09 kg
TH56k-EB	Blank insert jaws	30 x 30 mm	0-8 mm	0.05 kg
TH56k-EBG	Rubber insert jaws	30 x 30 mm	0-6 mm	0.06 kg
TH56k-EBP	Pyramid insert jaws	30 x 30 mm	0-8 mm	0.05 kg
TH56k-EBW	Wave insert jaws	30 x 30 mm	0-8 mm	0.05 kg
TH56k-EBD	Diamond insert jaws	30 x 30 mm	0-8 mm	0.06 kg

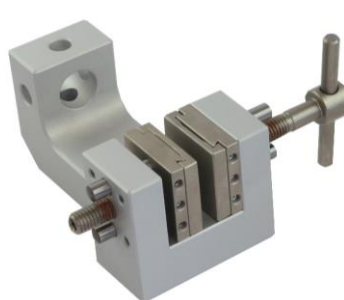


TH56k-GT30 + TH56k-EBP

Jaws with other dimensions and surface coatings on request

**TH56k+BW**

TH56k with wave jaws

**TH56k-GT30+EBP**

TH56k with pyramid (serrated) insert jaws

