

# Coefficient of Friction Test Fixture

## TH62-M and TH62-F

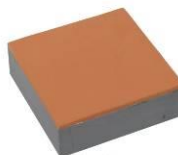


Fixture to test friction coefficient  
Pulley with light moving ball bearing

Tensile force: 500 N

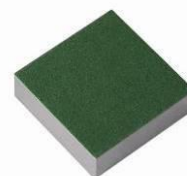
Platen: 270x150 mm (TH62-M or TH62-F)  
470x150 mm (TH62-M-P470 or TH62-F-P470)  
570x150 mm (TH62-M-P570 or TH62-M-P570)

**TH62-M:**  
**ASTM-D1894, TAPPI T549**

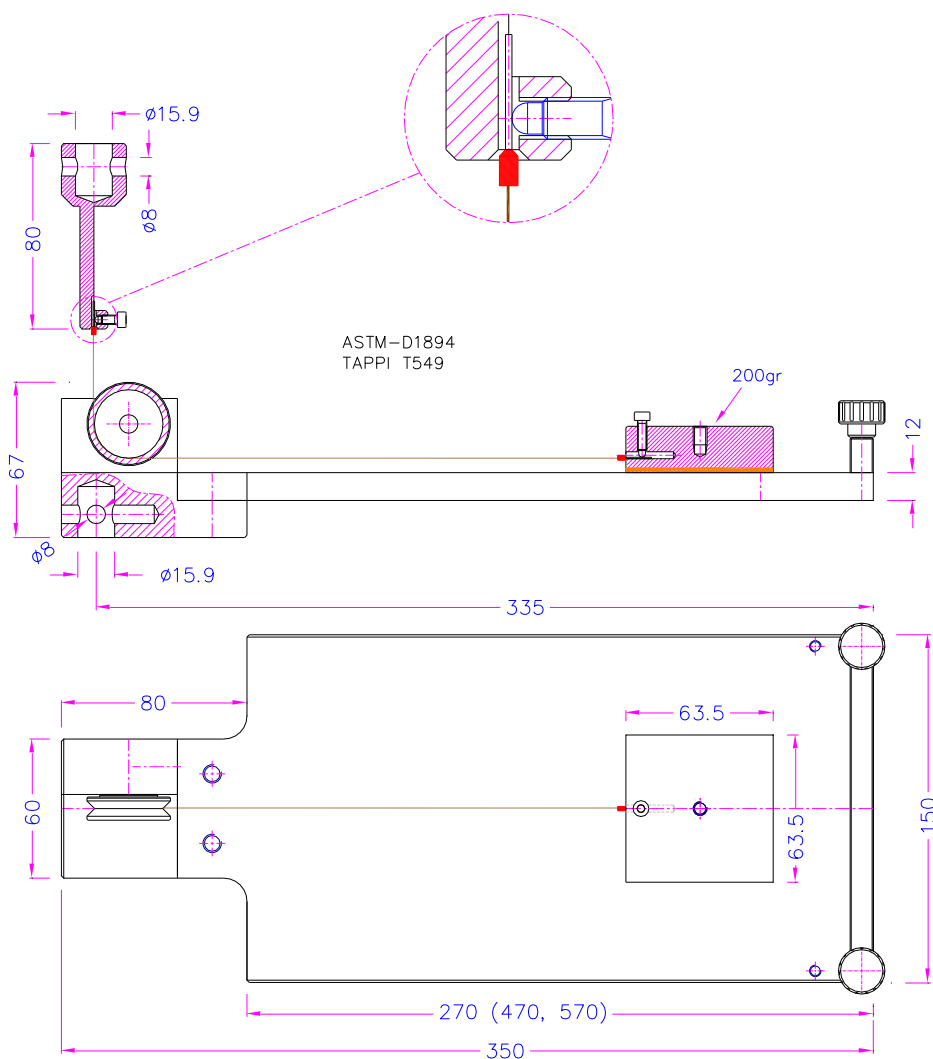


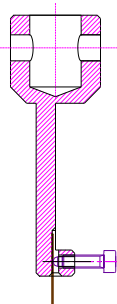
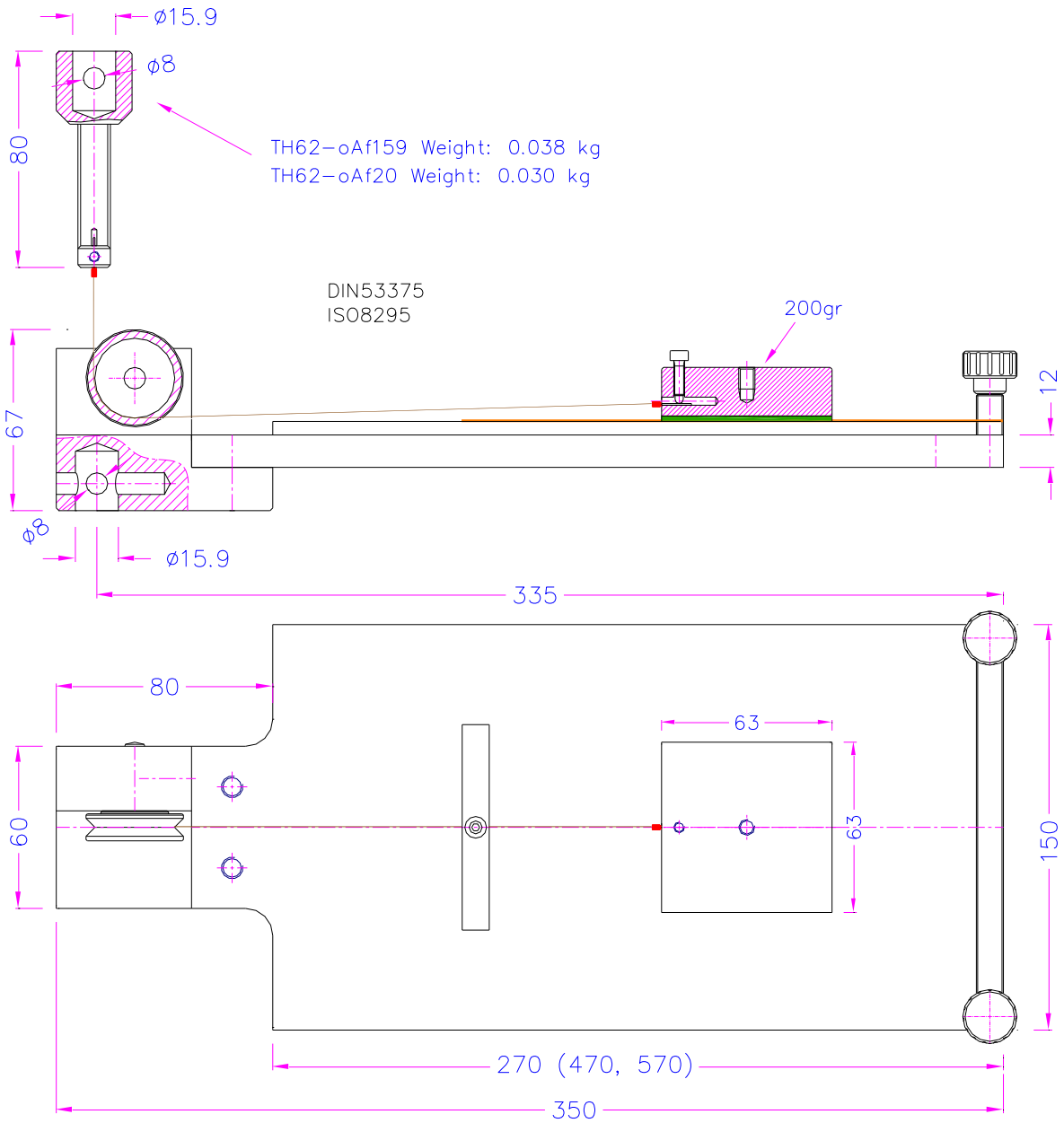
Fixture including 200 g weight (covered with cellular rubber)

**TH62-F:**  
**DIN53375, ISO8295**



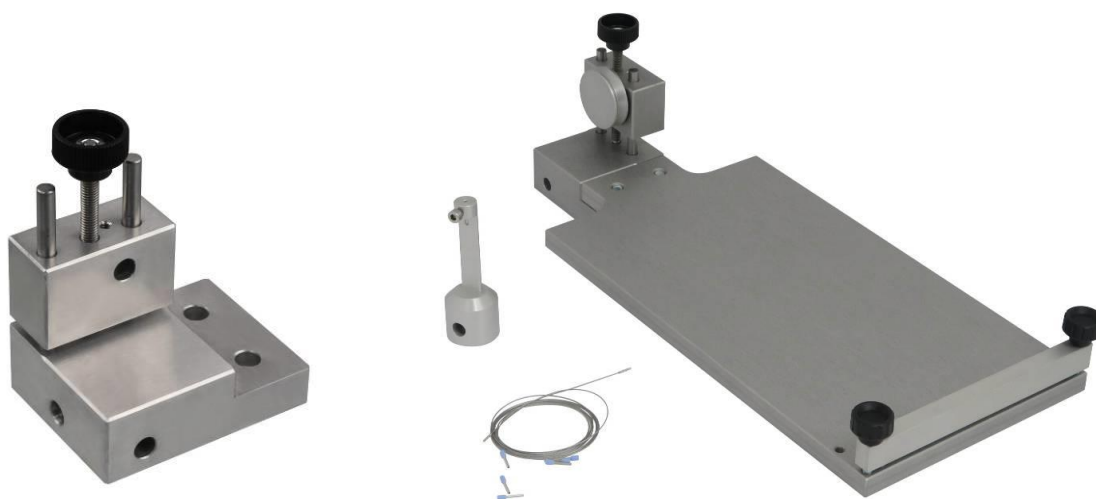
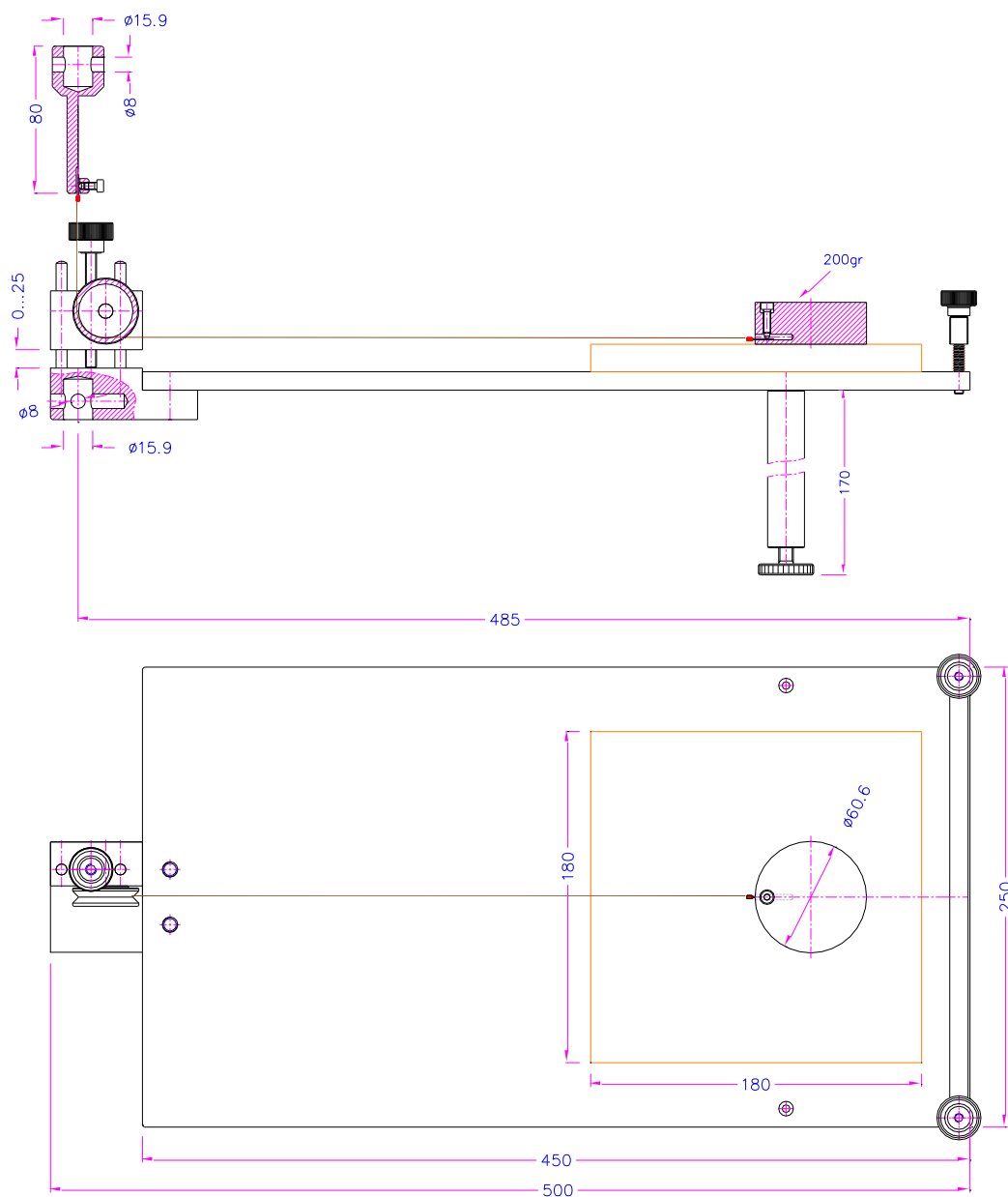
Fixture including 200 g weight (covered with felt)





TH62-oAf159 Weight: 0.038 kg  
TH62-oAf20 Weight: 0.030 kg

**Pulley with adjustable height**  
**Item no.: TH62-H25**



Optional accessory for TH62



TH62-HS

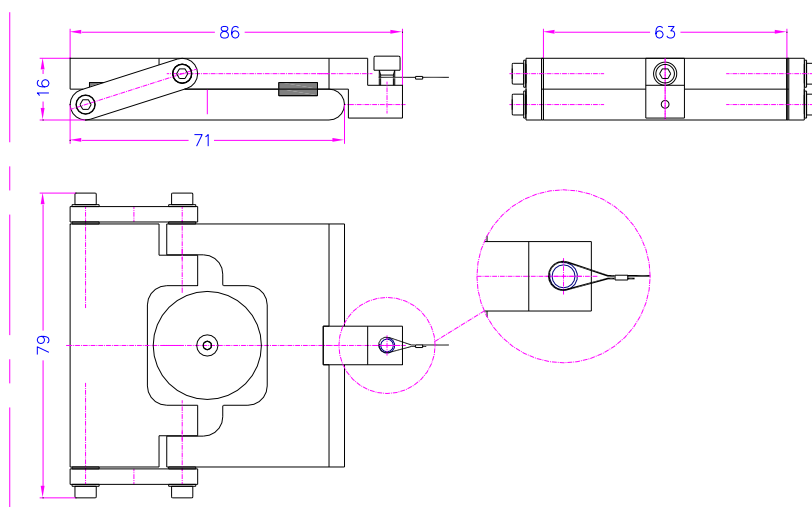
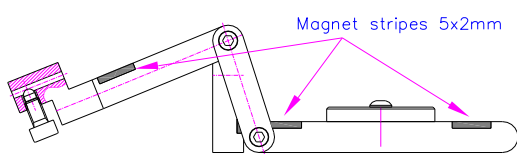
Folding sled with magnet fastener to keep thin samples (like foils, paper) secure in place

Weight 200 g

Videos:

How to insert a specimen:  
<https://youtu.be/QFNiCYJaoFY>

How to attach the sled to the wire anchor:  
<https://youtu.be/IEwLI9oLHdU>

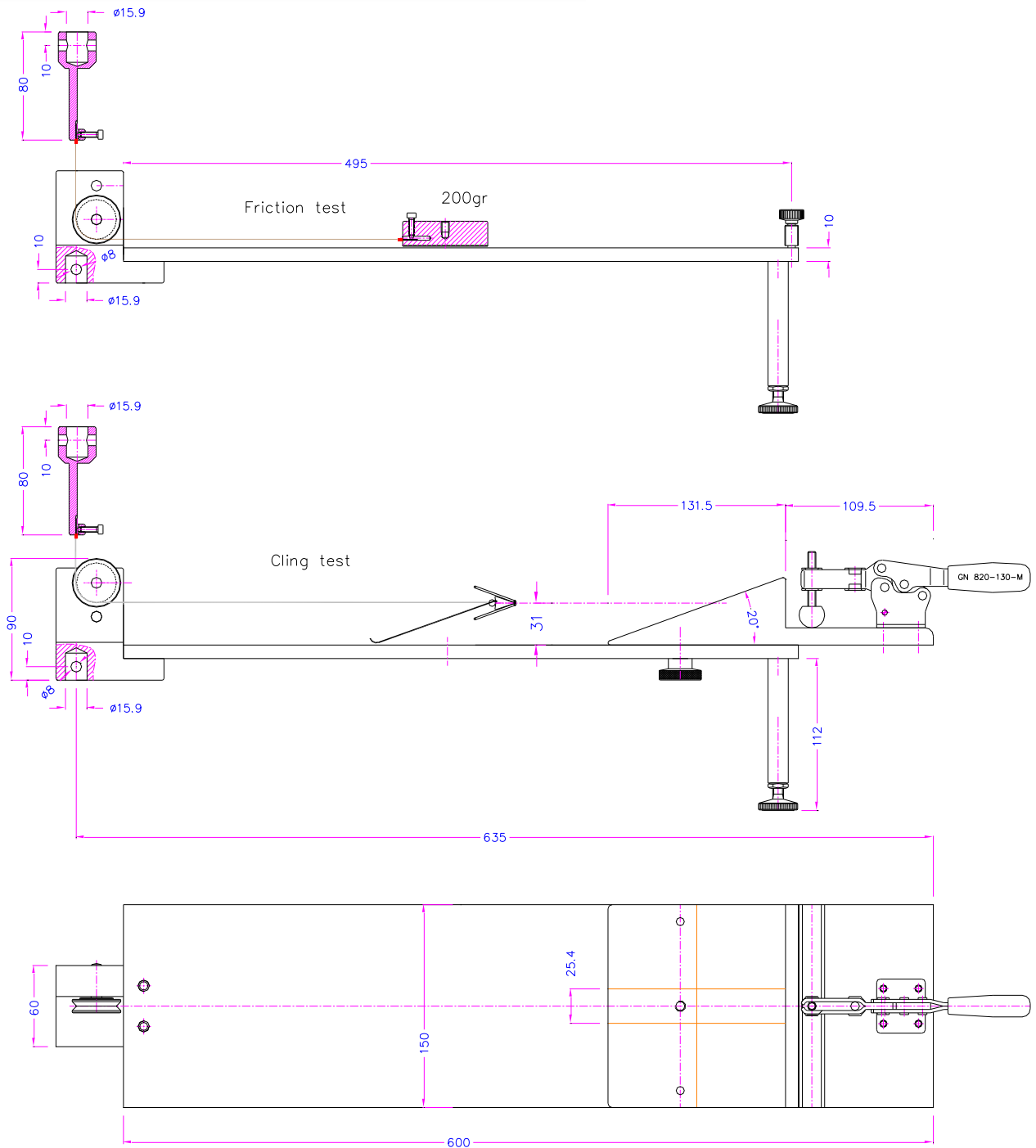


Similar fixtures to other test standards



TH62-20-500

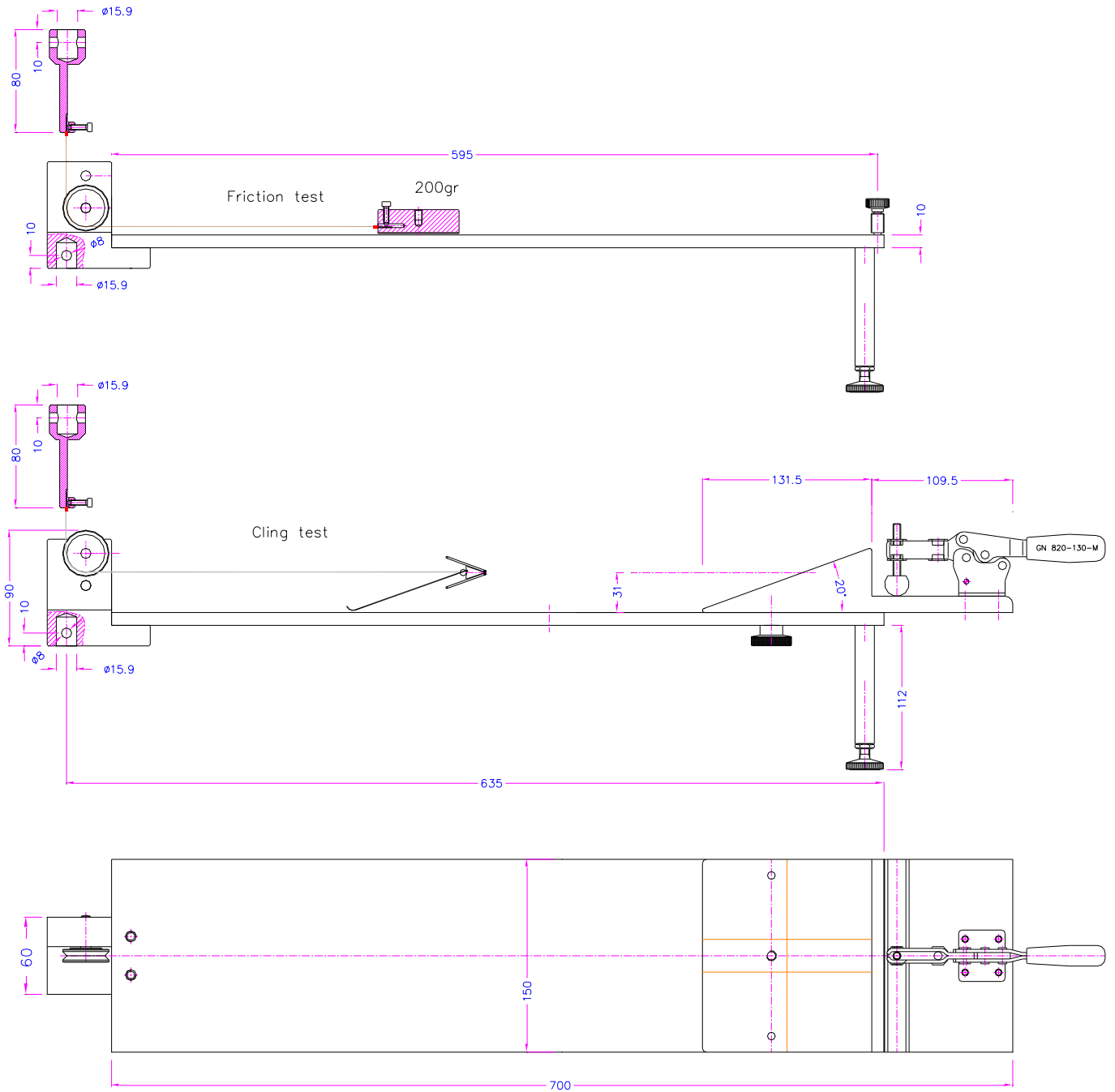
Peel cling of stretch wrap film fixture according to ASTM-D5458



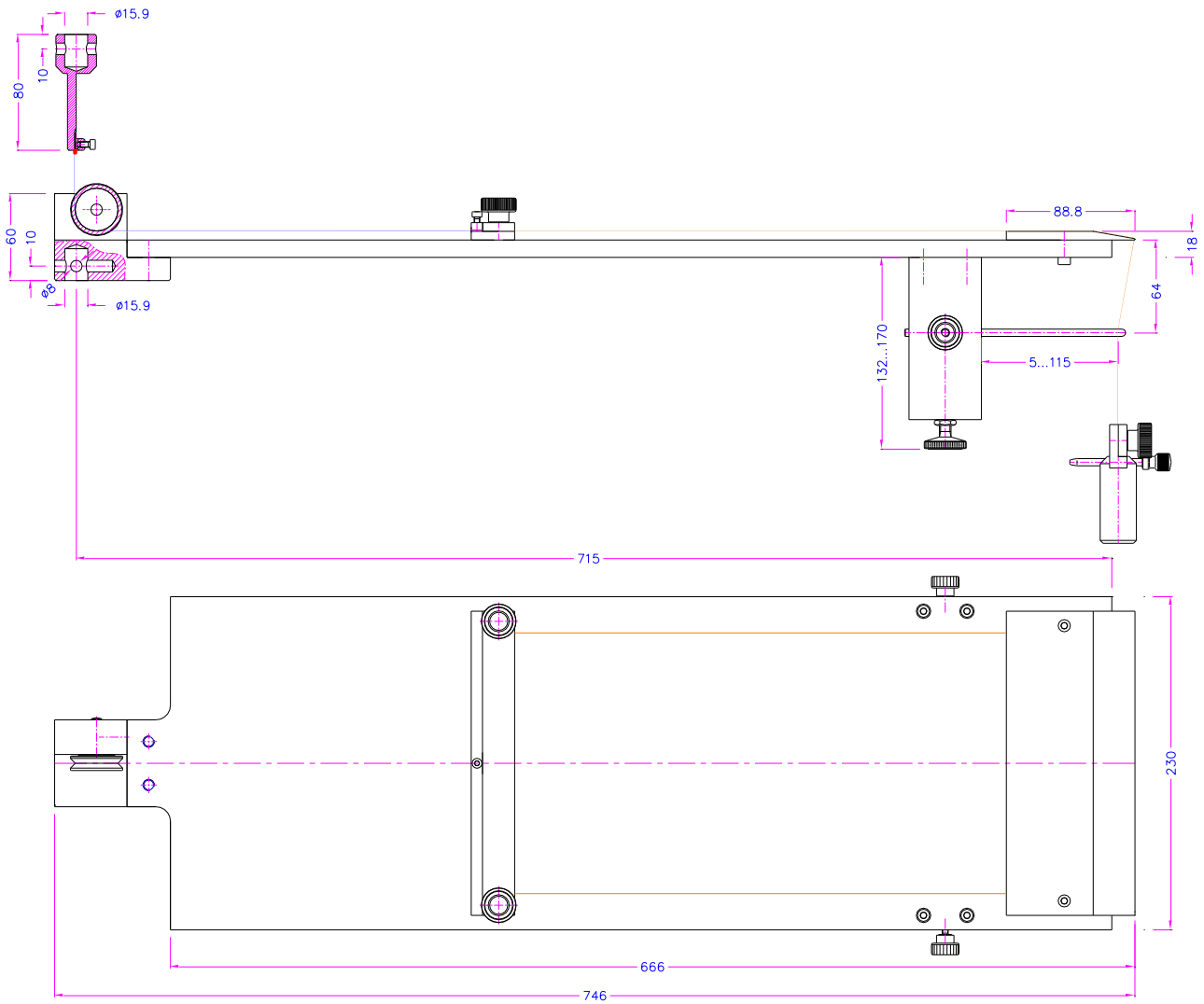


**TH62-20-600**

Peel cling of stretch wrap film fixture according to ASTM-D5458

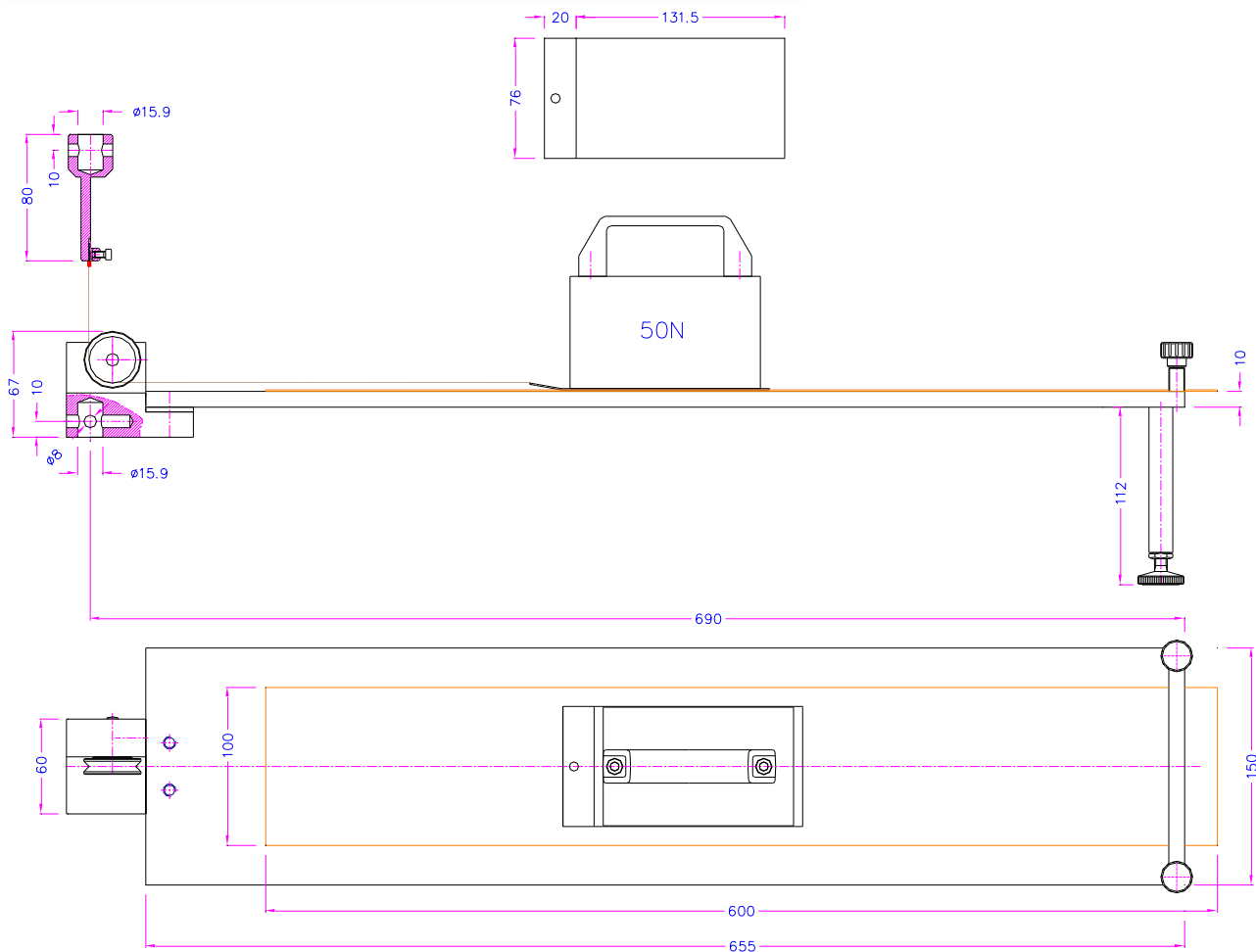


TH62-30



**TH62-40-ISO21182**

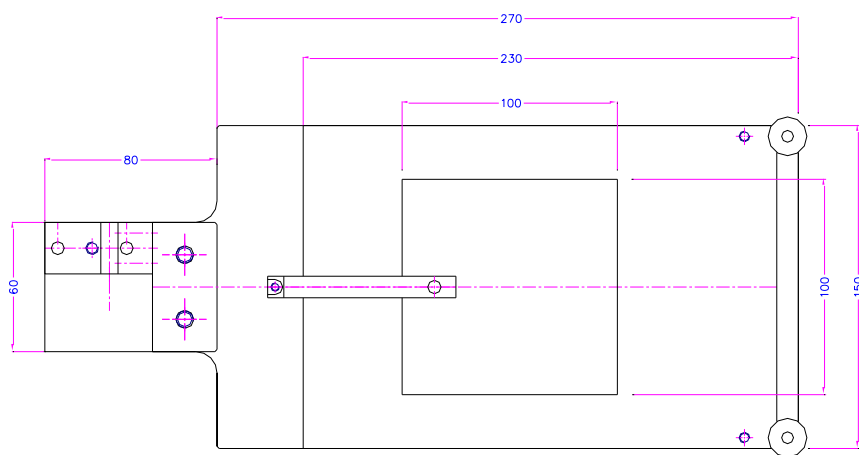
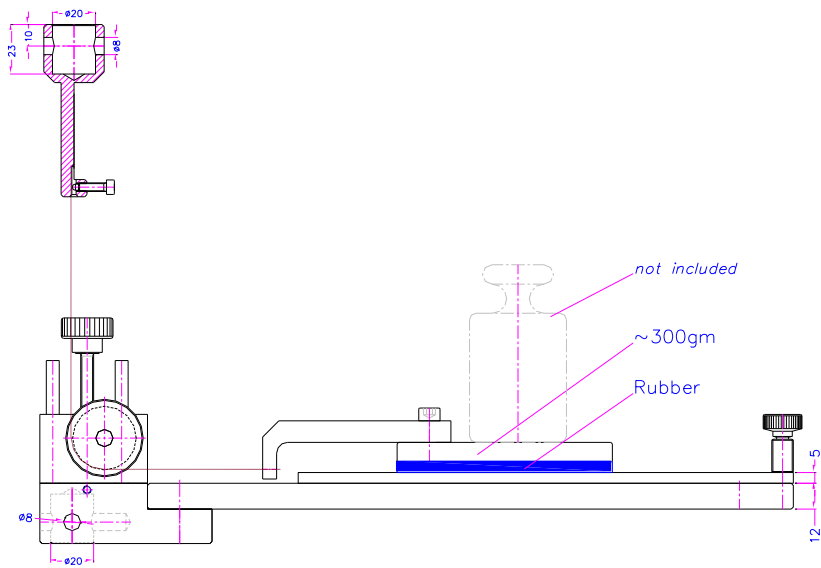
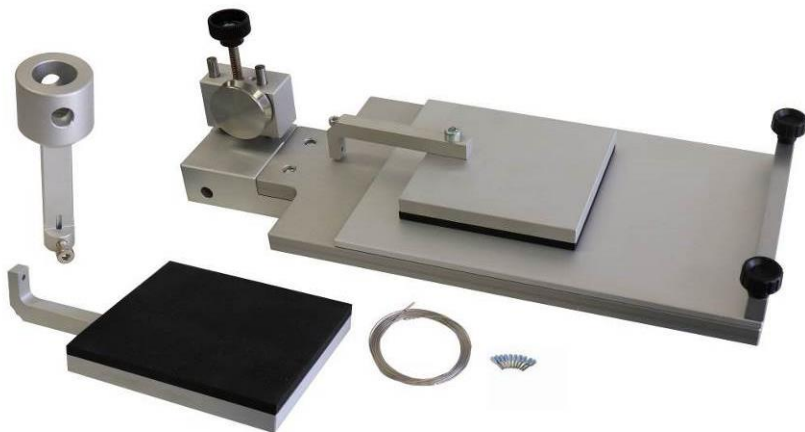
CoF test fixture for light conveyor belts according to ISO21182  
Sled weight 50 N





**TH62-P270-ISO15113**

CoF test fixture according to ISO15113 to determine frictional properties of rubber



TH62-P270-Af20-ISO15113