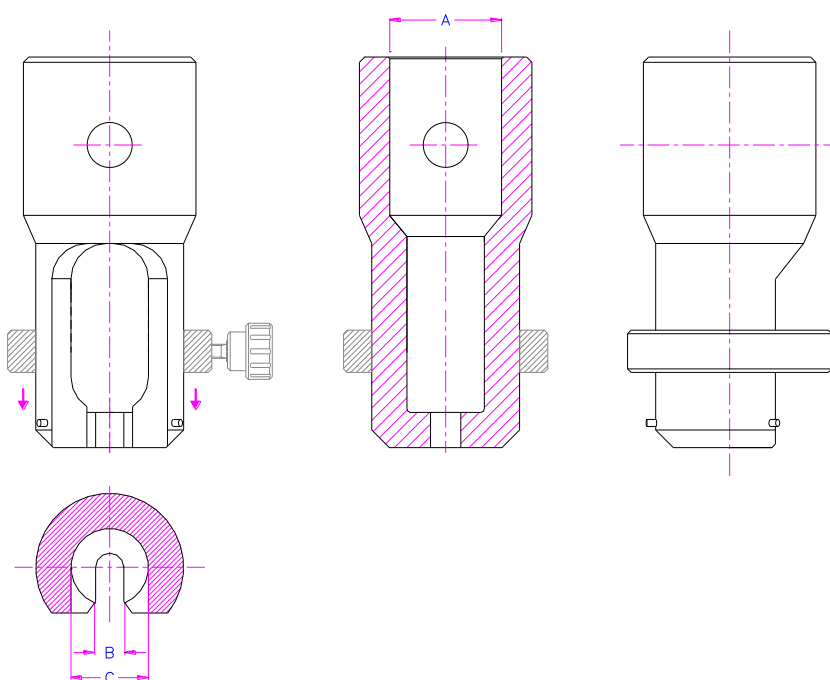


## TH89 Chuck Grips

Simple design for holding chuck samples  
Including ring to avoid widening

Steel

Scope of delivery: 1 pair of grips

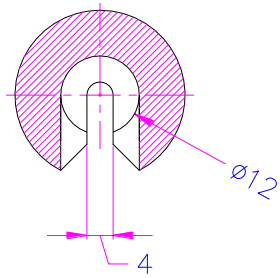
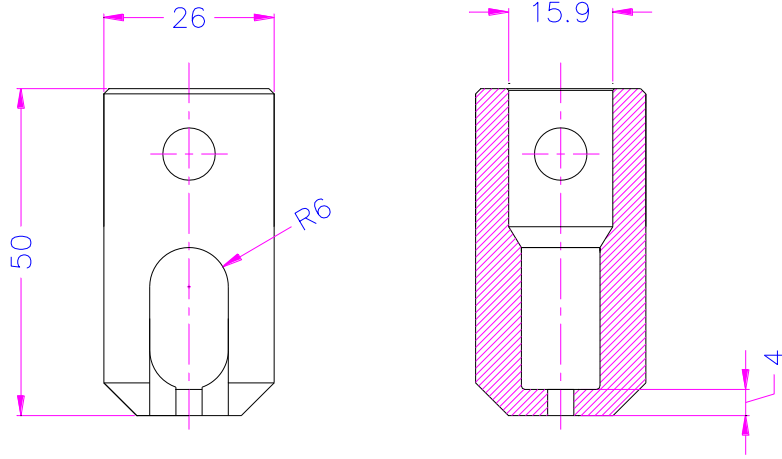


TH89 – A – B – C

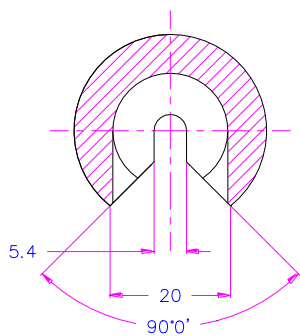
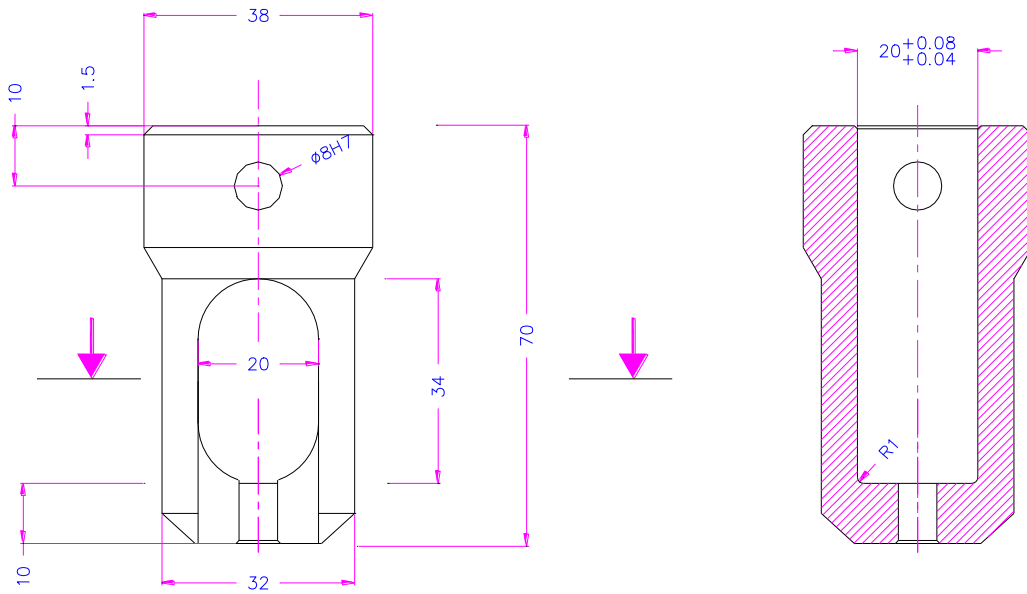
A Adapter size  
B Slot size  
C max.

15.9, 20, 30, 31.8, 40, 50, 60. Further adapter sizes on request.  
according to customer's specification  
chuck head diameter

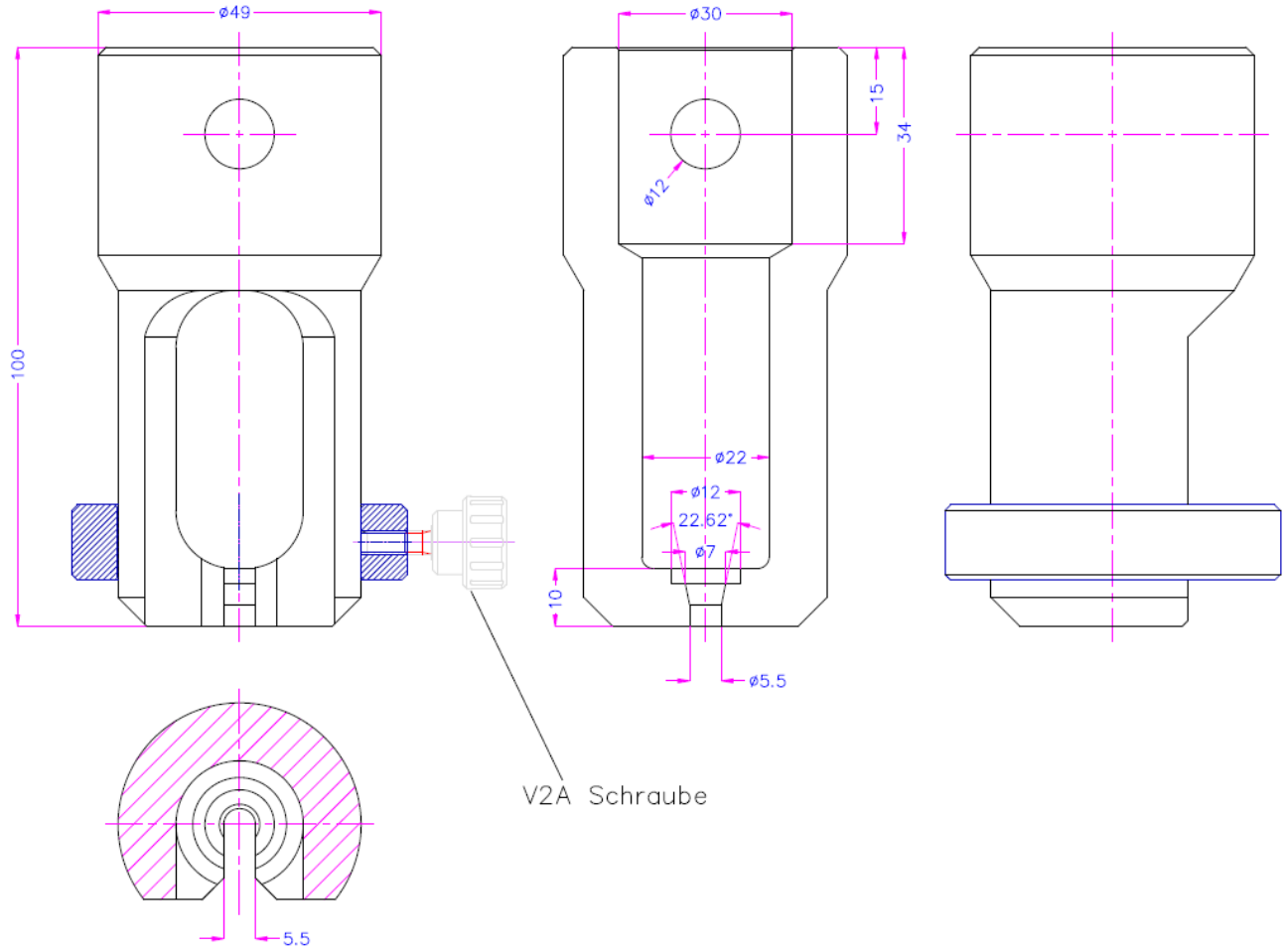
|                 | F max [kN] | A [mm] | B [mm]                         | C [mm]                    | Weight per 1 grip |
|-----------------|------------|--------|--------------------------------|---------------------------|-------------------|
| <b>TH89-159</b> | 20         | 15.9   | 4, 5, 6                        | 15.9                      | Ca. 0.2 kg        |
| <b>TH89-20</b>  | 20         | 20     | 4, 5, 6, 8                     | 20                        | Ca. 0.4 kg        |
| <b>TH89-30</b>  | 50         | 30     | 6, 8, 10, 12                   | 22                        | Ca. 0.8 kg        |
| <b>TH89-318</b> | 50         | 31.8   | 6, 8, 10, 12                   | 22                        | Ca. 0.9 kg        |
| <b>TH89-40</b>  | 100        | 40     | 8, 10, 12, 16                  | 28                        | Ca. 1 kg          |
| <b>TH89-50</b>  | 200        | 50     | 10, 12, 16, 20                 | 35                        | Ca. 3 kg          |
| <b>TH89-60</b>  | 250        | 60     | 12, 16, 20, 24                 | 40                        | Ca. 3.5 kg        |
|                 |            |        | Other slot sizes<br>on request | Other sizes<br>on request |                   |



TH89-159-4

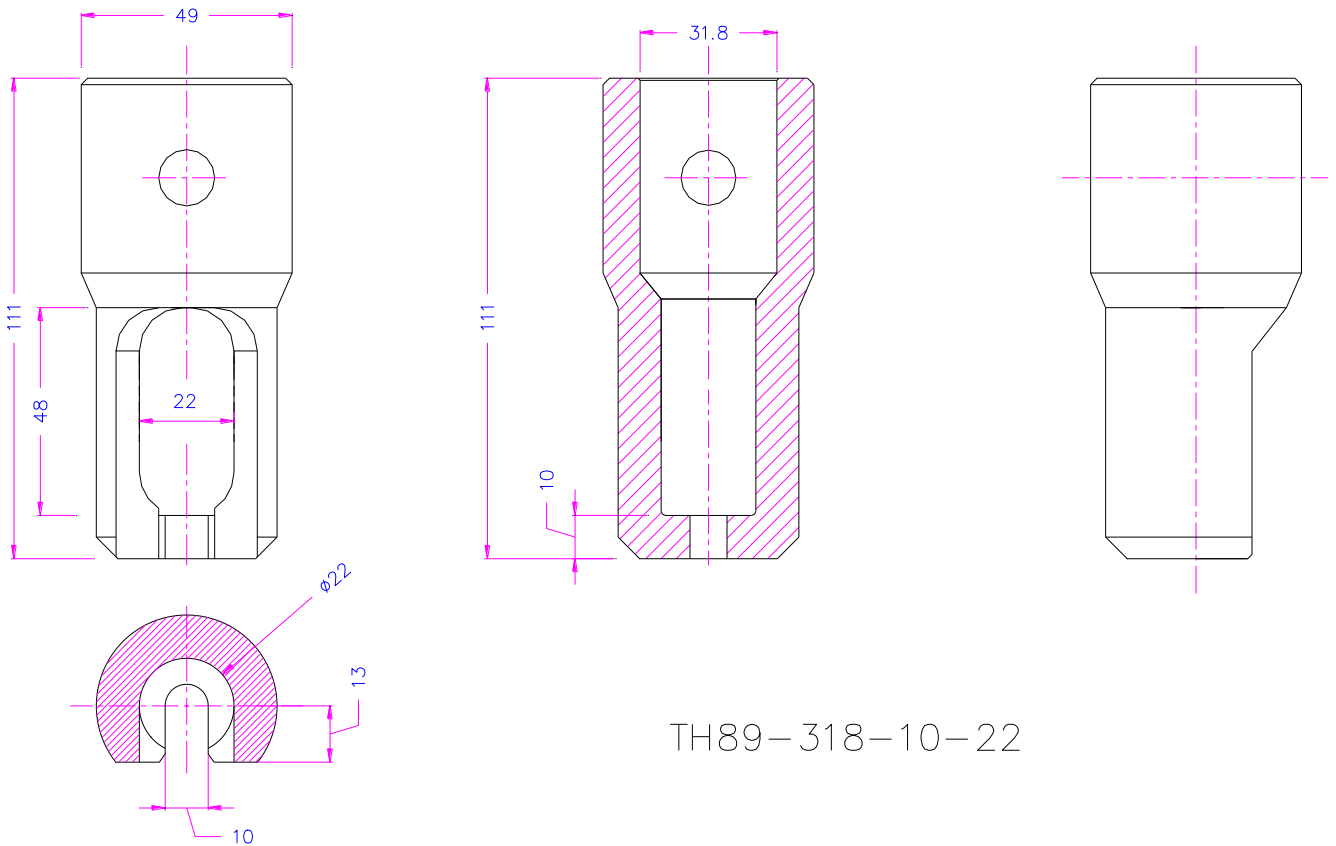


TH89-20-5

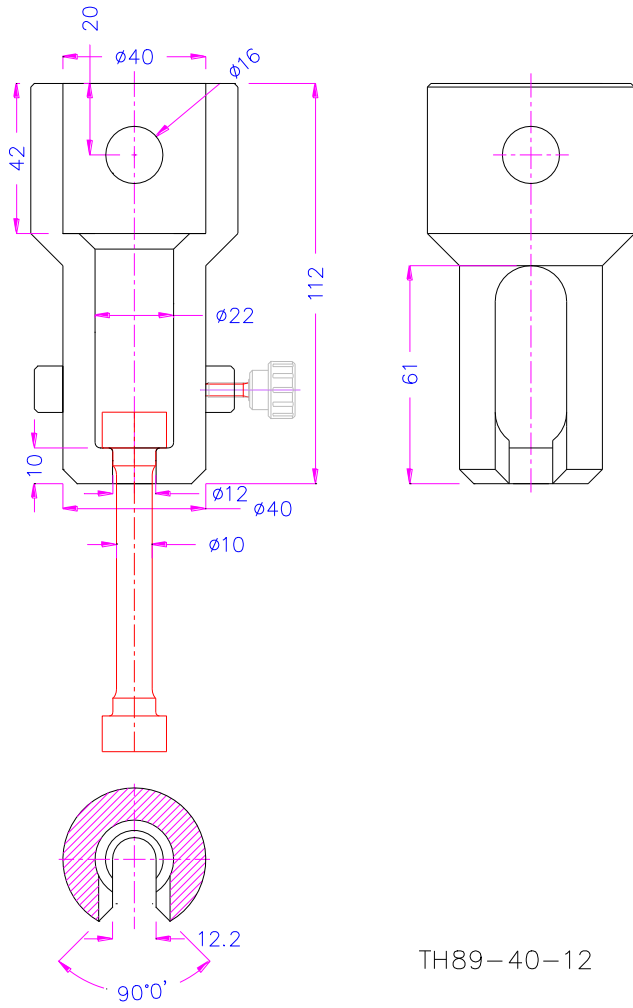


V2A Schraube

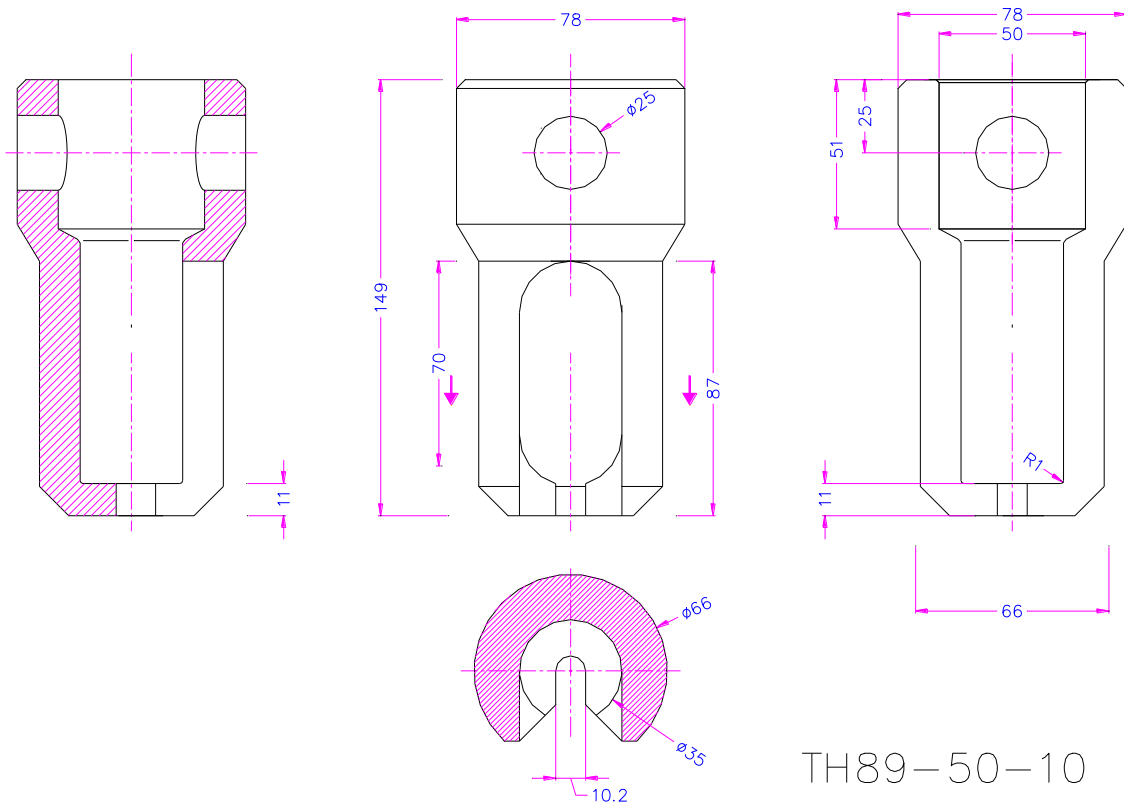
TH89-30-5.5-K7x22.62



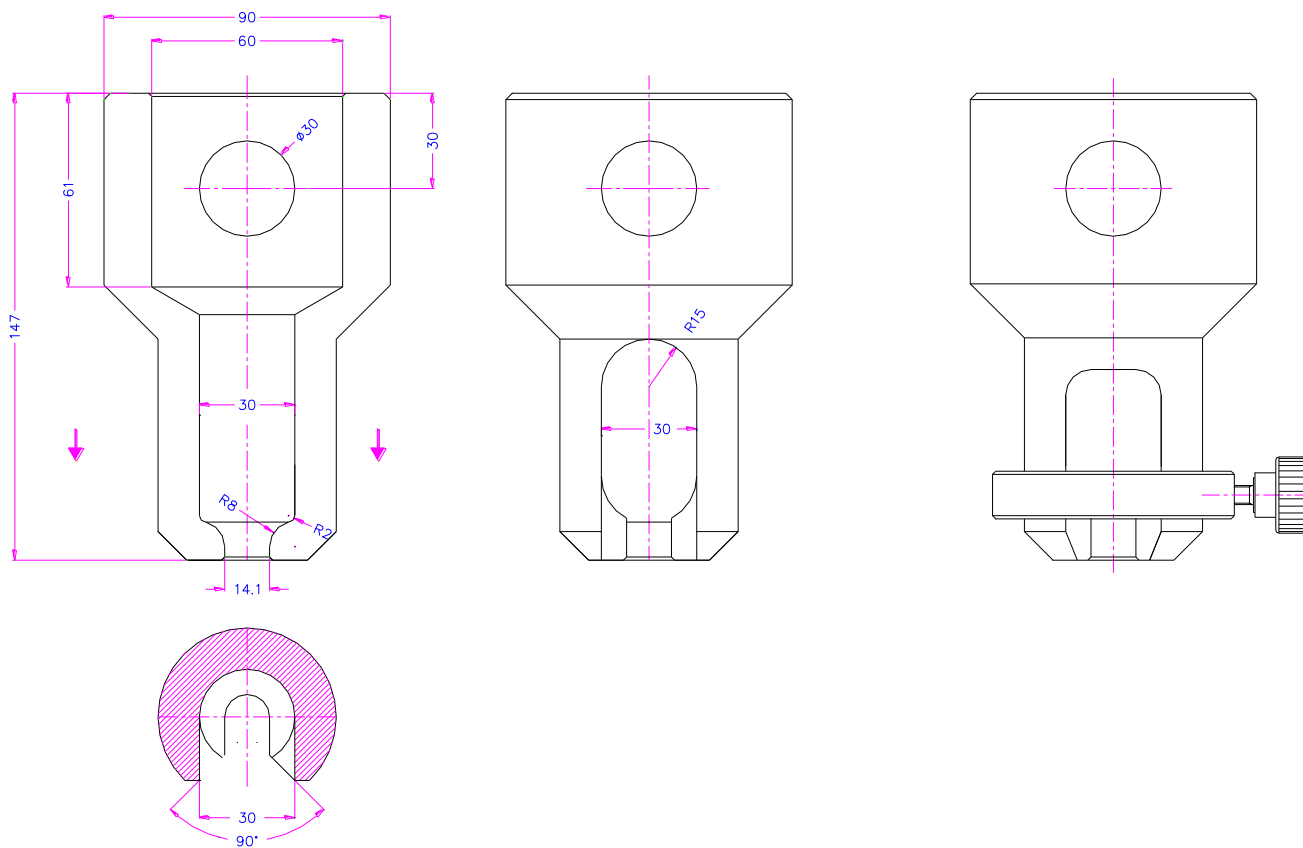
TH89-318-10-22



TH89-40-12



TH89-50-10



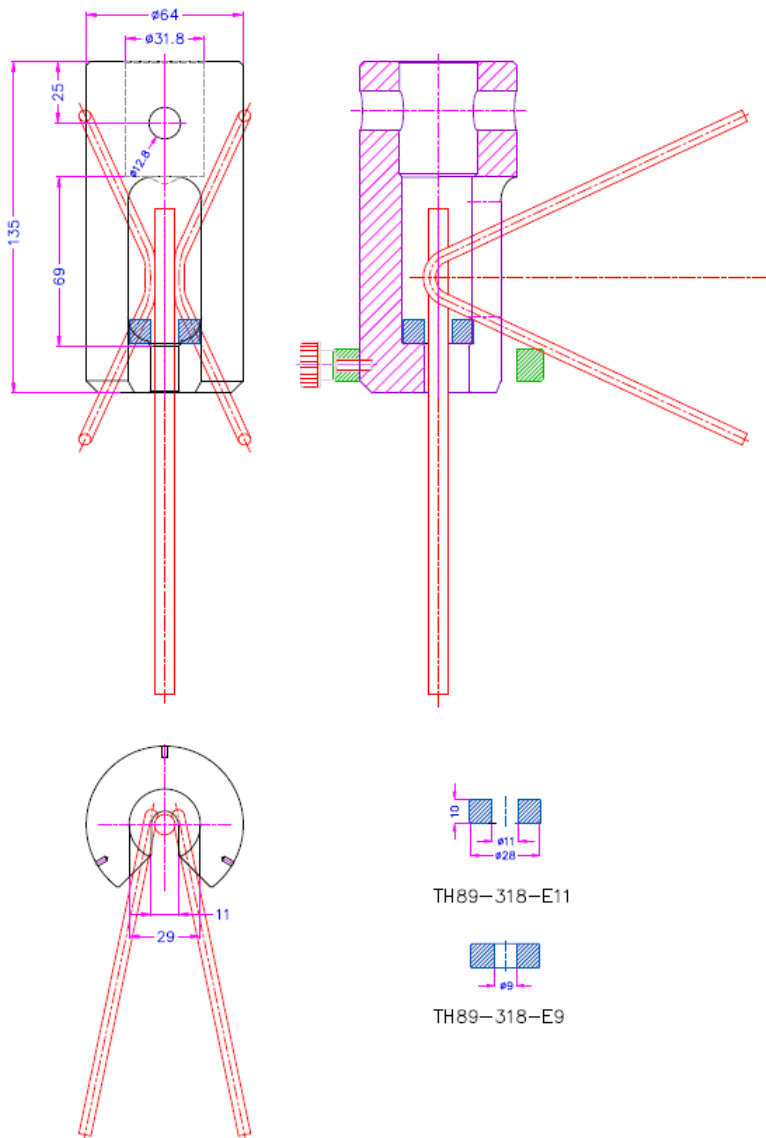
250kN

TH89-60-14.1-R8

**Customized versions:**



TH89-318-L69+E9+E11  
shear test for melted wires



See also other chuck grips:

[www.grip.de/G09](http://www.grip.de/G09)

[www.grip.de/G09/TH4](http://www.grip.de/G09/TH4)

[www.grip.de/G09/THS565](http://www.grip.de/G09/THS565)

[www.grip.de/G09/THS885](http://www.grip.de/G09/THS885)