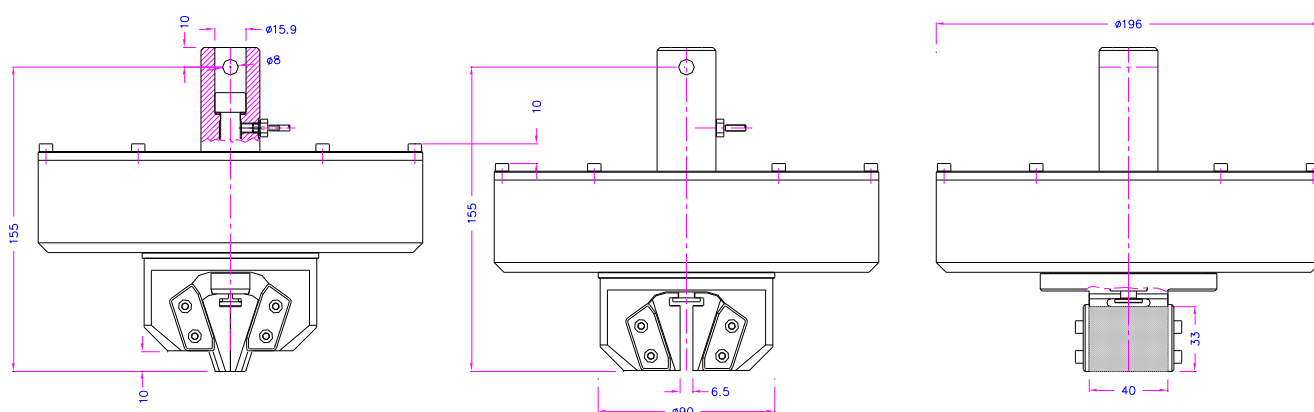


WEDGE GRIP, PNEUMATIC NON SHIFT

- the jaws move only horizontally
- the distance between the adapter cross hole and the jaws remains constant
- low axial load
- applicable for sensitive specimens, e.g. ceramics

Item no.:	THS1302-10-NOSH
Tensile load:	10 kN
Clamping force:	22 kN at 7 bar 40 kN at 15 bar
Coupling:	Af159 or Af20. Further couplings on request.
Body:	Steel, nickel-plated; stainless steel
Temperature range:	-70...+280°C
Weight:	9.7 kg per grip without jaws
Scope of supply:	1 pair of grips without jaws



THS1302-10-NOSH+Lxx
with pull rods for temperature chamber usage

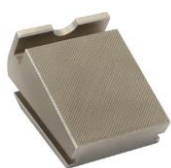


THS1302-10-NOSH+BW80
with special wave jaws 80 mm wide

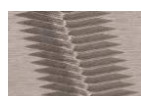
Jaws for THS1302-10-NOSH:

Scope of delivery: 1 set = 4 jaws

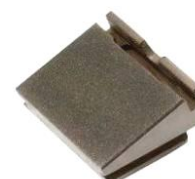
Item-No.	Surface	Opening	Clamping surface (h x w)	Weight per pair
THS1302-10-BP6	Pyramid (serrated)	0-6 mm	33x40 mm	0.3 kg
THS1302-10-BP12	Pyramid (serrated)	6-12 mm	33x40 mm	0.2 kg
THS1302-10-BP16	Pyramid (serrated)	10-16 mm	33x40 mm	0.2 kg
THS1302-10-BV2	V jaws	2-6 mm	Clamping height 33 mm	0.3 kg
THS1302-10-BV6	V jaws	6-12 mm	Clamping height 33 mm	0.2 kg
THS1302-10-BD6	Diamond-coated	0-6 mm	33x40 mm	0.3 kg



Pyramid (serrated) jaws - for flat samples



V jaws - for round samples



Diamond jaws - covered with synthetic diamonds

Jaws with other surface coatings and openings are possible on request

Pneumatic accessories:



TH205-8

2 pneumatic foot switches, tubes and fittings. Max. 10 bar.
For double action rods.
Without spring inside
Scope of delivery: 1 pair of foot switches including tubes and fittings.



TH216 Silent compressor for laboratories, oil-lubricated, with pressure reducer

Max pressure 16 bar; 230 V/50 HZ; noise level: 38 dB(A)
Motor: 0.13 kW; displacement: 17 l/min; tank size 3.5 l
Dimensions: 340x290x340 mm (L x W x H); weight 18 kg