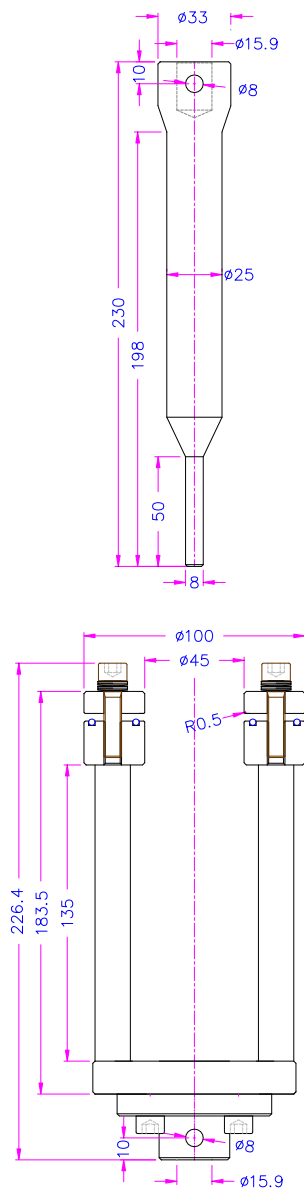
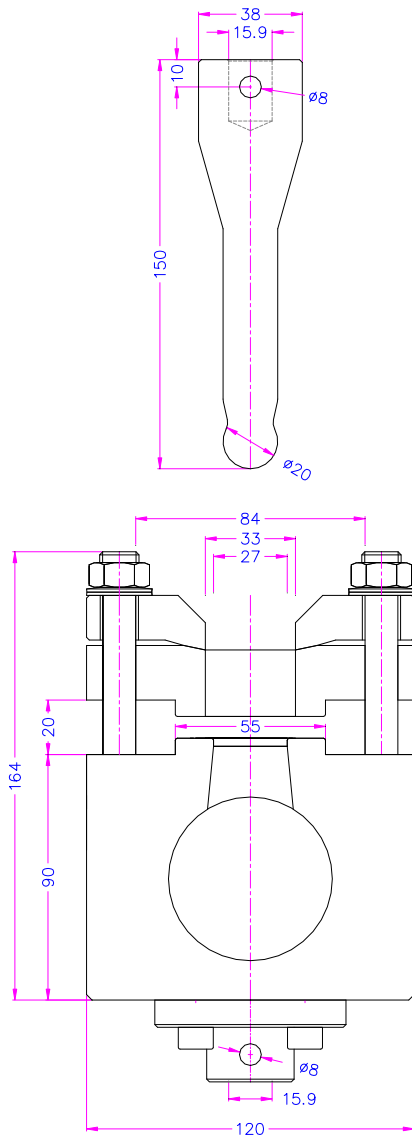


PUNCTURE TEST FIXTURES

Item no.:	THS145-45-ASTM-D4833
ASTM D4833: Index Puncture Resistance of Geomembranes and Related Products.	
GOST R 56586: Wasserdichte Geomembranen aus Polyethylen. Spezifikationen.	
Load capacity:	20 kN (with Af159 and Af20); 50 kN (with Af318)
Ring clamp attachment:	<i>Internal Ø: 45 ± 0.025 mm [1.772 ± 0.001 in.]. External Ø: 100 mm [3.937 in.]</i>
Probe:	Ø 8 ± 0.1 mm [0.315 ± 0.004 in.]
Coupling:	Af159, Af20, or Af318. Further couplings on request.
Material:	Steel, nickel-plated. The probe is hardened.
Temperature range:	0 ... +70°C. Further temperature ranges on request.
Weight:	3.3 kg ring clamp attachment incl. adapter; 0.68 kg probe
Scope of supply:	1 fixture incl. probe.



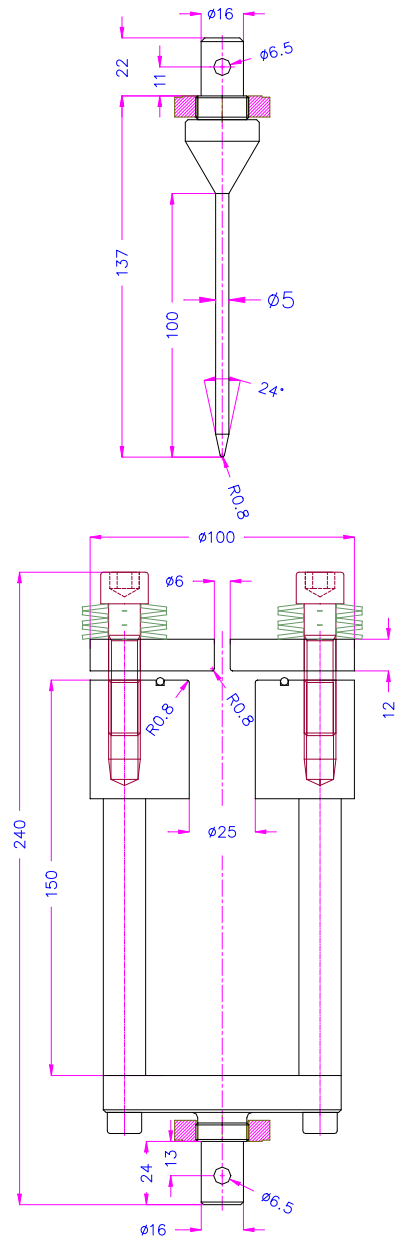
Item no.:	THS145-20-27-33
According to DIN EN ISO 20482 : Metallic materials - Sheet and strip - Erichsen cupping test;	
DIN 50101-1 : Testing of metals; Erichsen cupping test on sheet and strip metal having a width of ≥ 90 mm; Thickness range: 0.2 mm to 2 mm;	
GOST 10510-80-Fig.1.1 : Metallic materials - Sheet and strip - Erichsen cupping test.	
Load capacity:	20 kN
Specimen size:	0.1-2 mm thick and ≥ 90 mm wide
Probe:	$\varnothing 20$ mm
Coupling:	Af159 or Af20. Further couplings on request.
Material:	Steel, nickel-plated. The probe is hardened.
Temperature range:	0 ... +70°C. Further temperature ranges on request.
Weight:	8.8 kg ring clamp attachment incl. adapter; 0.57 kg probe
Scope of supply:	1 fixture incl. probe



Examples for further modifications:

THS145-5-25-2s

according to **IEC 60903-Fig.5**: Live working - Gloves of insulating material. Resistance to mechanical puncture.



ASTM E643: Standard Test Method for Ball Punch Deformation of Metallic Sheet Material.

THS145-22.2-25.4-25.4
for samples with thickness less than 1.5 mm

THS145-22.2-28.6-25.4
for samples with thickness 1.5-2 mm

UNI 8279-11:1985 Nonwovens - Test Methods - Determination of Perforation Resistance By Ball Method

Nontessuti Determinazione della resistenza alla perforazione con il metodo della sfera (Italian standard)



For more puncture test fixtures please check www.grip.de/G23/