

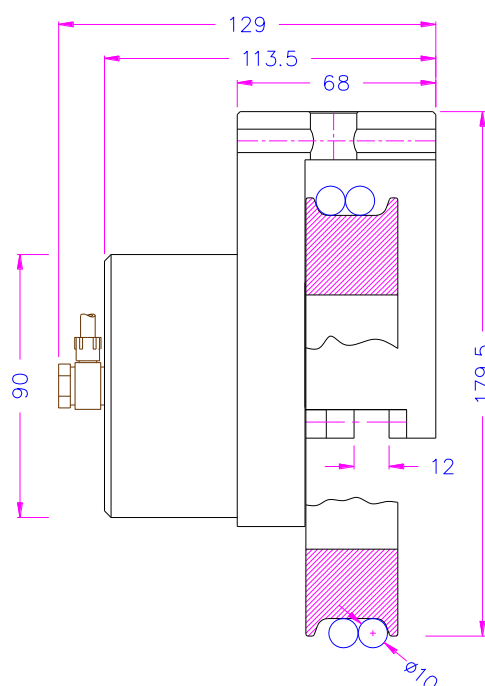
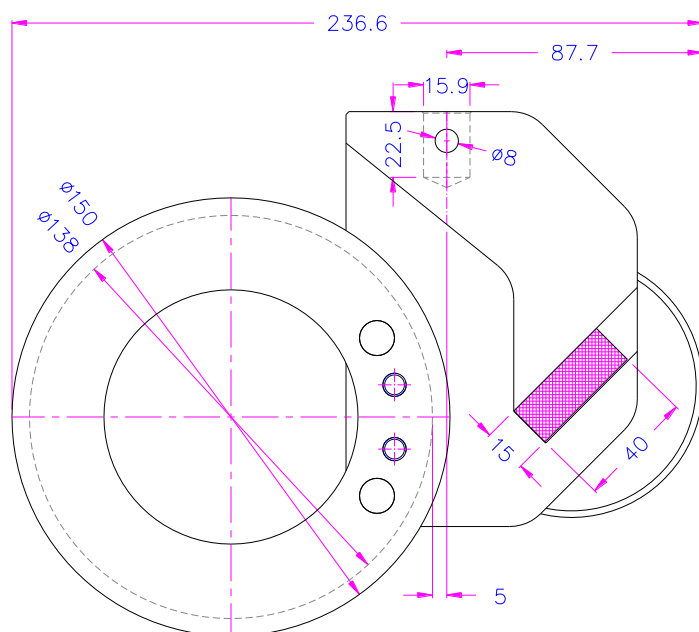
PNEUMATIC CAPSTAN GRIPS, 20 kN and 50 kN

Applicable for testing ropes and ribbons.

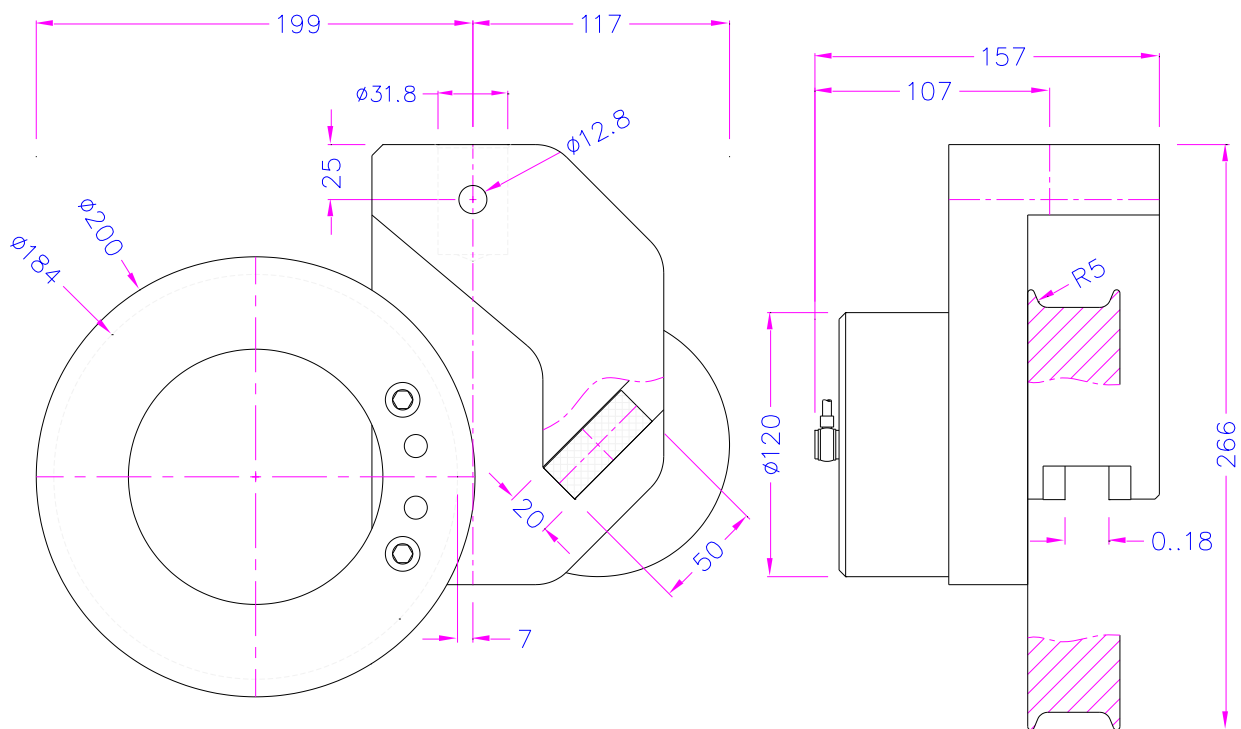
Depending on the coefficient of friction, specimen will be twisted one or more times around the capstan, before being fixed with the clamping jaws.

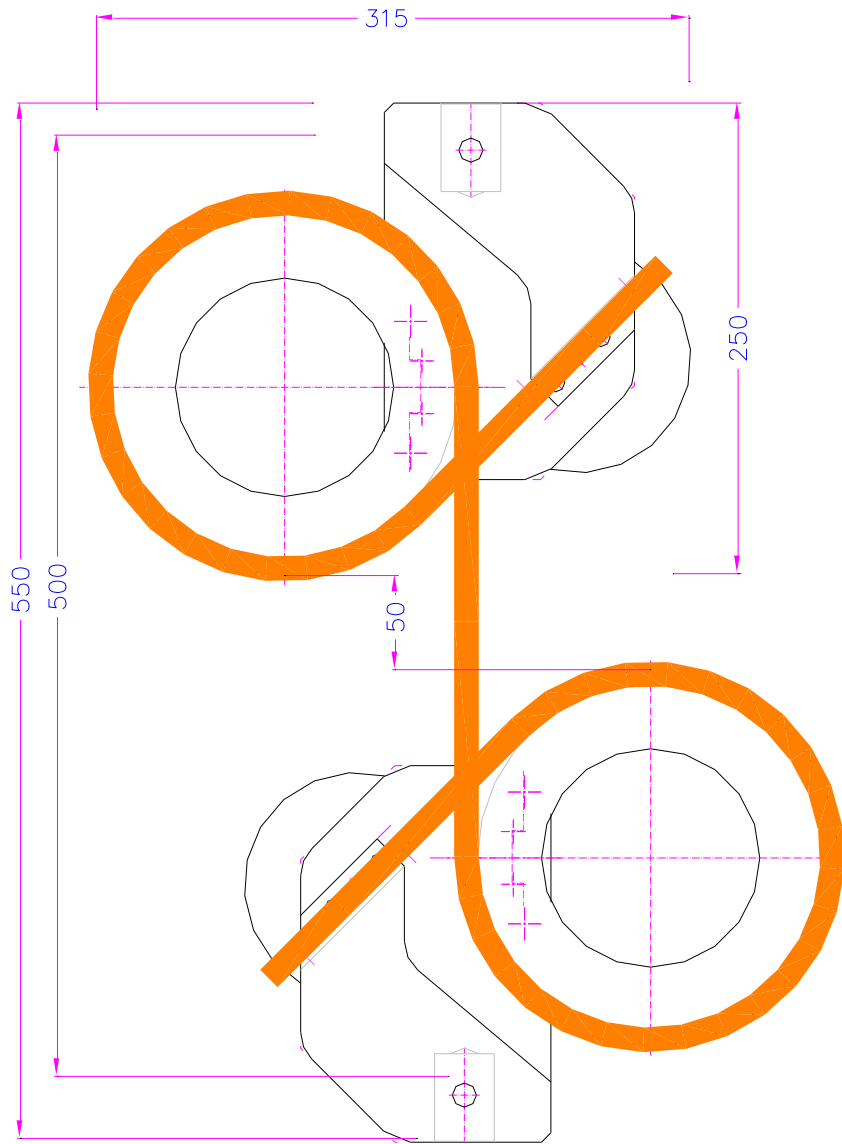
The capstan rollers generate a slow notch-free stress relief to prevent the breakage of the specimen in the clamping area.

Item no.:	THS185-20
Max. load:	20 kN / max. 10 bar
Coupling:	Af159. Further couplings on request
Jaw opening:	0 – 12 mm
Jaw clamping surface:	15 x 40 mm; pyramid (serrated)
Min. sample length:	1250 mm
Pneumatic connection:	1/8" internal thread
Body:	Aluminium, anodized
Capstan:	Steel
Jaws:	Steel, hardened, nickel-plated
Temperature range:	0 ... +70°C Further temperature ranges on request
Weight:	4.7 kg per grip incl. jaws
Scope of supply:	1 pair of grips incl. jaws



Item no.:	THS185-50
Max. load:	50 kN / max. 10 bar
Coupling:	Af318. Further couplings on request
Jaw opening:	0 – 20 mm
Jaw clamping surface:	20 x 50 mm; pyramid (serrated)
Min. sample length:	1650 mm
Pneumatic connection:	1/8" internal thread
Body:	Aluminium, anodized
Capstan:	Steel
Jaws:	Steel, hardened, nickel-plated
Temperature range:	0 ... +70°C Further temperature ranges on request
Weight:	11 kg per grip incl. jaws
Scope of supply:	1 pair of grips incl. jaws





THS185-50

Pneumatic accessories:**TH205-1 Foot pedals**

None locking: The jaws of the grip open by pressing the foot pedal and close after removing the foot from the pedal.

Scope of delivery: 1 pair of foot switches including tubes and fittings

**TH205-2 Foot pedals**

With locking function: The jaws of the grip open by pressing the foot pedal and remain opened after removing the foot from the pedal. The jaws close by pressing the pedal one more time.

Scope of delivery: 1 pair of foot switches including tubes and fittings

**TH205-PR16bar Pressure regulator**

Optional for TH205-1 or TH205-2

To adjust air pressure: 1-10 bar

**TH205-3 Hand switches**

With locking function: The jaws of the grip close by pulling the handle and remain closed. The jaws open by pushing the handle back.

Scope of delivery: 1 unit of hand switches including tubes and fittings

**TH205-4-1/8" Hand switches**

Pneumatic micro – hand switches, tubes and fittings, 1/8" connection

The hand switches are directly mounted at the grips. 3/2 directional valve

Scope of supply: 2 hand switches including tubes and fittings

**TH216 Silent compressor for laboratories, oil-lubricated, with pressure reducer**

Max pressure 16 bar; 230 V/50 HZ; noise level: 38 dB(A)

Motor: 0.13 kW; displacement: 17 l/min; tank size 3.5 l

Dimensions: 340x290x340 mm (L x W x H); weight 18 kg